

# Let's Get Frosty!

Sew Along

## Part Four

**Important Notice:** Please note there was a correction posted for **Part 2, Method 2** for the Flying Geese. If you did not see this correction, please make sure you download the updated copy from our website. The corrections are highlighted in green print. If you used Method 2 and you made them 'incorrectly', please save those flying geese for Part 8. See, you are already ahead!

**PLEASE READ THROUGH ALL INSTRUCTIONS BEFORE CUTTING**

### Piecing Tips:

- Use an accurate scant 1/4" seam allowance throughout this project unless specified.
- Starch or Best Press® fabrics before cutting for easier handling. I highly recommend to spray all fabrics and let them dry (to prevent size distortion) then press and cut as instructed.
- Stitch length should be small – 1.8 to 2.0.
- Use thread colour with minimal contrast especially when joining blocks together.
- Drawn diagrams may not show seam allowances – do not trim to match diagram. Refer to the sizes provided.

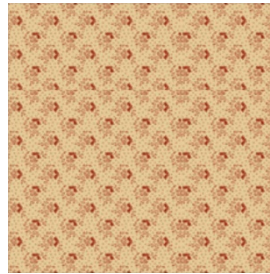


### Step 1: Cutting makes for more fun!

**From the Frosty Cream (light) fabric:**

**Cut (1/2) strip 3-1/2" x 42" WOF**

Subcut strip into (3) 3-1/2 x 3-1/2" squares.



### Step 2: Let's Make the Block!

**Thread Tip:** When sewing the 3-1/2" center square to the flying geese units, you will notice the fabric here is all Frosty Cream. Make sure you are using cream thread at this point or the darker thread will show up!

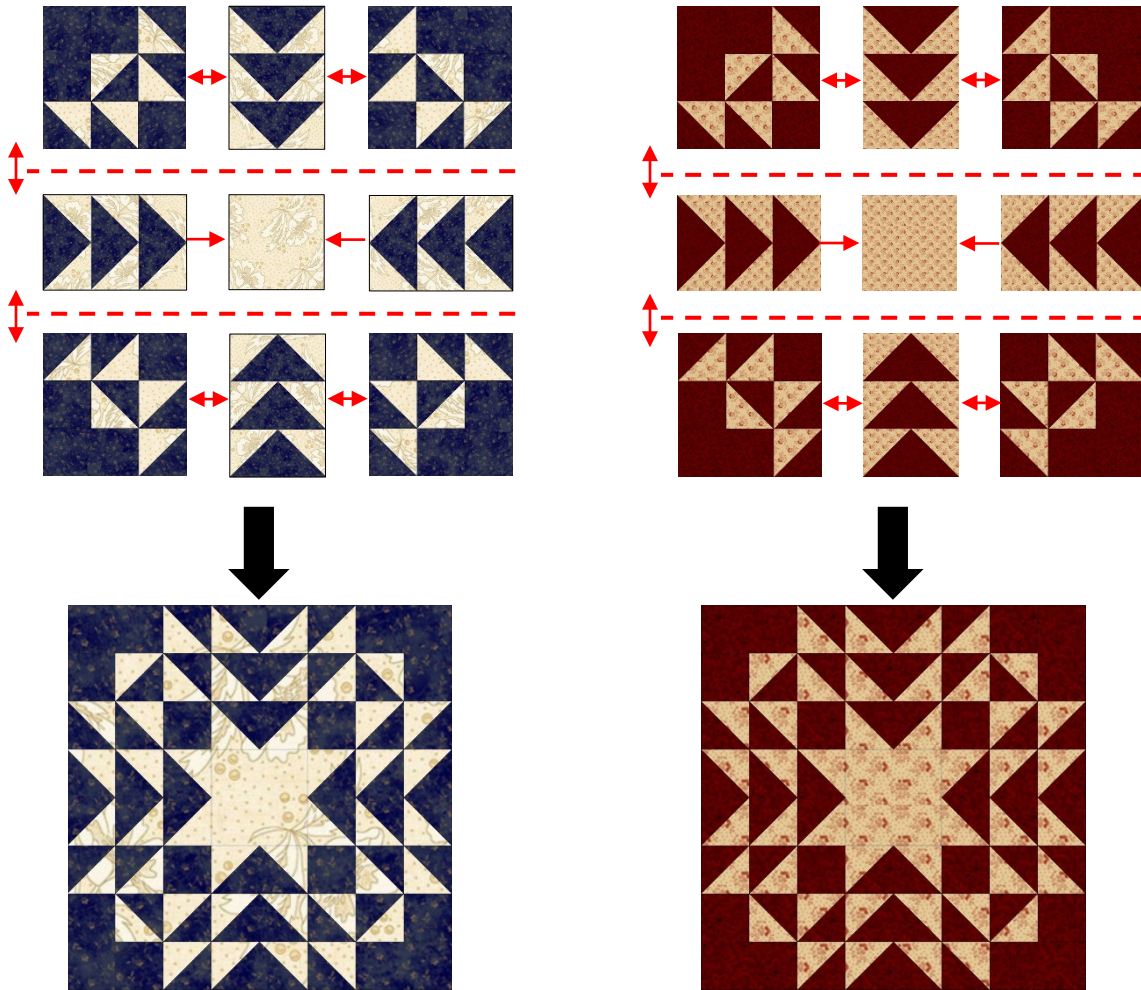
1. Lay out the units and cut pieces to form the *Snowflake* block as shown on the next page. Watch the orientation of the units, specifically those Corner blocks – they can be tricky and we don't want a date with 'jack the ripper'!
2. Using the horizontal rows designated by the dashed lines, join the units together by pinning accurately at the meeting points and nesting seams. Stitch carefully and slowly. Double check the seam and the points and make any corrections that need to be done to ensure there are perfect points.



Border Creek Station Pattern Company

• [www.bordercreekstation.com](http://www.bordercreekstation.com) •

- Press seams as indicated by the arrows. Note that some of the seams I am recommending that they be pressed open to relieve the bulk that may occur with all of the intersecting points that happen in certain areas.
- Now join the horizontal rows together, carefully pinning at the meeting points and nesting the seams. Stitch, carefully guiding over the points and seams. Double check the seam. Press these row seams open.



- Once sewn, this *Snowflake* block should measure 12-1/2" x 12-1/2" unfin. Trim to tidy edges, if necessary.

<b>Make:</b>	(3) 12-1/2" x 12-1/2" unfin. <i>Snowflake</i> blocks
--------------	--

*Stay tuned for Part 5 on November 15<sup>th</sup>!*

