

How to open SVG file with your Silhouette Software  
Pearl Pereira © 2015

The following Instructions are written for using the layers option in the Silhouette software. With the optional pen Silhouette sketch pens that fit directly into the blade holder of your Silhouette you can write the numbers on each template.

1. First SAVE the SVG file I sent you on your computer in a folder where you can easily find it.
2. Open the Silhouette Software.
3. Click File, in the drop down window click Open and locate the SVG file you want to open.
4. The page will come in and is ready cut. You do not need to draw cutting box around it.
5. Click on the Cut Settings Button to open the Cut Setting Window.



6. I like to use the The Appliqué Pressing Sheet when ironing freezer paper. It will not wrinkle when ironed and protects your ironing surface from the poly coating build on any ironing surface. I use a wood cutting board as my ironing surface for a nice flate freezer paper templates. Important when using the cutting machine.
7. Pre-shrink 2 sheets of freezer paper. Then layer the sheets on the pressing sheet with shiny sides down and iron to bond them together.
8. Replace the cutting blade with a Silhouette pen.



9. Click the Cutting Setting button to show the cut setting window.

10. In the Cut Modes Click Advanced to change the Cut Mode.

11. In the Cut Order window Un-check Titles and Templates.

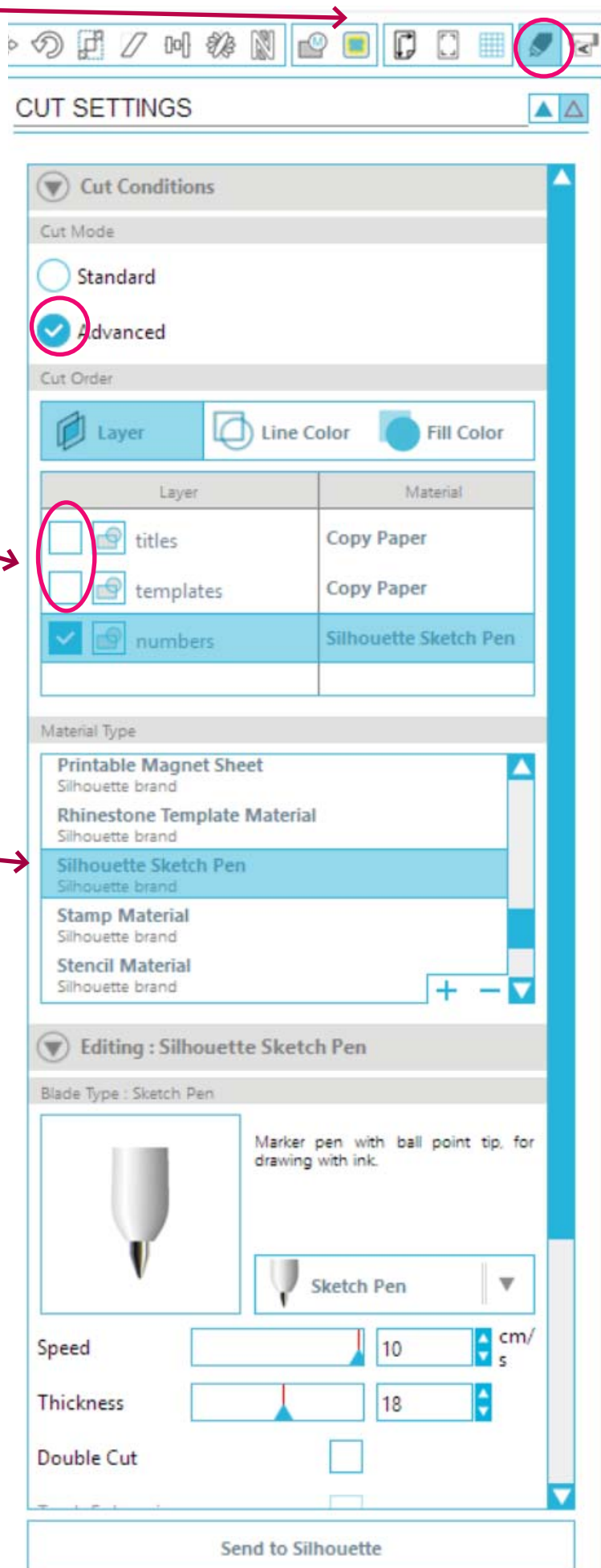
12. In the Material Type window scroll down and click on Silhouette Sketch Pen

13. Place the double layer ironed freezer paper on the cutting mat with shiny side down. This will also make your cutting mat last longer.

14. Load the mat in the machine.

15. Click Send to Silhouette and the machine will write the number on the freezer paper.

**DO NOT REMOVE THE PAPER AFTER IT IS DONE PRINTING.**



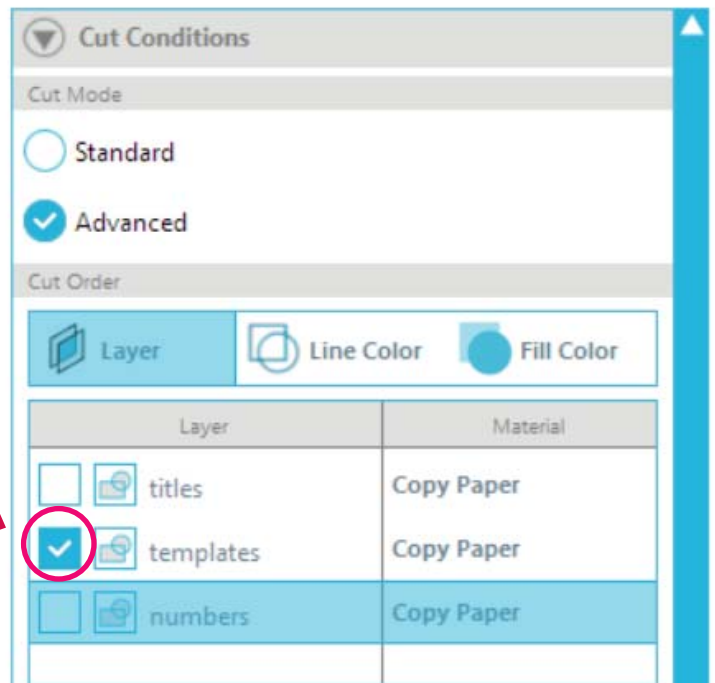
16. Remove the Pen and replace it with the blade unit.



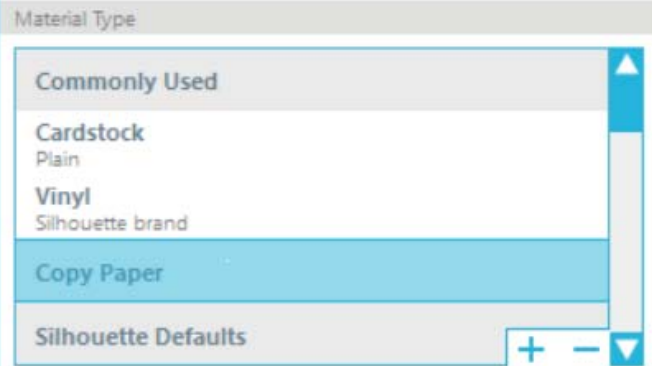
17. Click the Cutting Setting button to show the cut setting window.



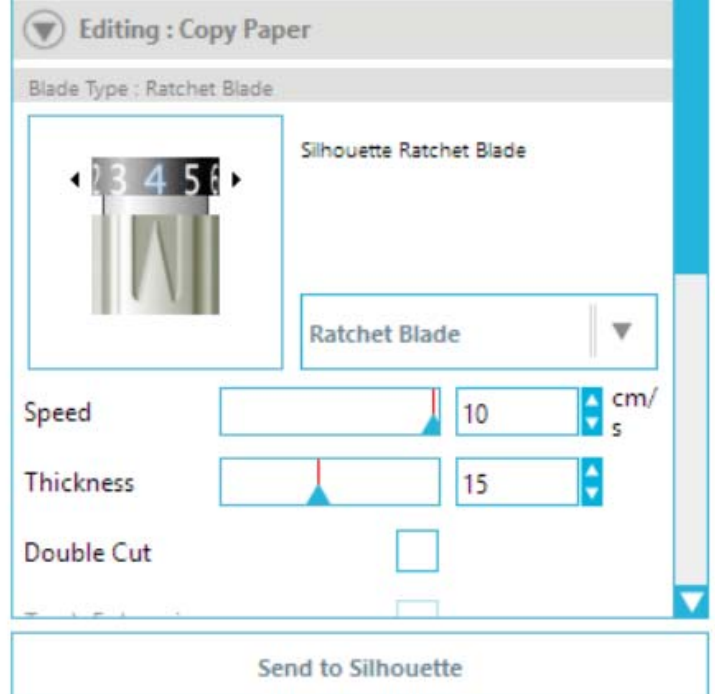
18. In the Cut Order window Un check the numbers and click on Templates.



19. In the Material Type window scroll up and click on Copy Paper.



20. Click on Send to Silhouette to cut the templates.



Hope this helps.

Pearl

Copyright 2015

