



Empty Spools Seminars - Session V May 3-8 2019

All My Favorite Things Workshop

by Pearl P. Pereira

Copyright 2018



Finished wall hanging 30" x 28"

Join Pearl as she guides you through careful prep work for perfect appliqué results; and let her introduce you to the uniquely successful techniques she has developed. Learn Pearl's "Off the Block" prepared edge freezer paper appliqué techniques and build your appliqué directly onto the pattern. Eight Elements for perfect appliqué: how to make her "any size Perfect Bias Stems", reverse appliqué, sharp points, perfect circles, plus smooth concave & convex shapes. Don't worry about the small details in this project Pearl will be demonstrating how to add stenciling with paint stick to give your project a very special look, fun way to get all that lettering perfect. All My Favorite Things center medallion block is the workshop project. Pearl's workshops are always open for independent studies please feel free to work on any appliqué project of your choice.

Skill Level: All levels



Basic Supply list

Supplies: Each Student must have their own iron, ironing mat and extension cord. Bring a personal light if you need extra lighting and small light box if you like using one.

*** My Favorite Things Pattern purchase required for this project

- Pencil
- Black and Red Extra Fine point Sharpie pens for tracing and marking templates
- Brown Pigma Pen .005 – for transferring embroidery lines
- Off-The-Block Applique Book
- Irons – Clover Wedge Iron for ironing templates and large shape
Cheri's Cool Tool iron for working with small shapes
- Ironing mat (I like June Taylor Cut n Press I).
- Appliqué Stiletto and Appliqué Pressing Tool
- P3 Designs Ultimate Appliqué Template Paper or Freezer Paper ½ yard
- Fiskar small Curved Scissors for cutting templates
- Sharp fabric scissors
- 1/4" thick foam core board the size of your project (used to mount and transport home your project)
- Parchment Paper the kind you bake with large enough to cover your foam core board
- 3/4" applique pins
- Pentel Aquash Water Brush for spray starch (found at Michaels or Amazon.com) or ¼" stencil brush
- Roxanne's Glue Baste It
- Applique Pressing Sheet 13" x 17" for pressing freezer paper
- Spray Starch and small container
- 1/8" or ¼" stencil brush
- Travel size rotary cutter & mat (5 ½" x 8 ½") or your favorite size
- P3 Designs Straw Needle #11 or your favorite appliqué needle
- Thimble
- Your favorite appliqué thread to match fabrics, I like Superior Threads Kimono # 100 Silk threads
- Hot Iron Cleaner - Optional but you may need to clean your iron
- Personal power strip or extension cord

Additional Supplies Needed

- Refer to Fabric requirements
- P3-180-1 Embellishment Button pack
- Shiva Matte Mini Assortment Paint sticks set on Amazon -
Jack Richeson 121306 Shiva Oil Paintstik, Mini Matte Assortment, Set of 16

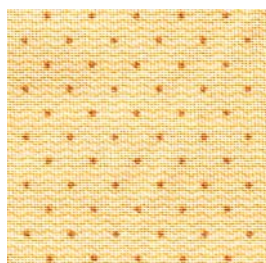


My Favorite Things

Wall Hanging

Pearl P. Pereira

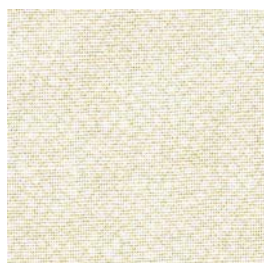
finished size 30" W x 28" H



1 1/8 yards
Center block
2nd borders



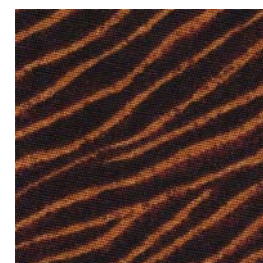
3/4 yard
Applique & scallops
1st border & binding



17" x 6" rectangle
Medium Taupe
Block # 1 & 3



16" x 7" rectangle
Medium Taupe
Block #2 & 28



13" x 3" rectangle
Dk Brown
Block #5 & 69



12" x 5" rectangle
Medium Brown
Block #4



10" x 10" sq
Block #15, 30, 32, 50, 84, 86
Border # 2, 3, 5, 6, 14, 15



10" x 10" square
Andover 8527-EG
Block #25, 31, 33, 43, 72, 85, 87
Border # 1, 4, 7, 12, 13, 16, 21



9" x 2" rectangle
Med Lt Brown
Block #14



9" x 3" rectangle
Blue
Block #19, 48, 105



9" x 2" rectangle
Silver
Block #63, 66, 94



8" x 8" square
Pink
Block #16 & 52
Border #22



8" x 8" square
Yellow/Gold
Block #4, 54, 73, 81
Border #9, 10, 18, 19, 24

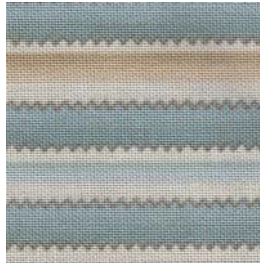


6" x 5" rectangle
Lt Green
Block # 5

Block # - page 2



6" x 6" square
Hoffman 1895-28 silver
Block # 6, 7, 8, 9, 10, 89, 90, 91,
93, 95, 109, 111, 112, 113,



5" x 5" square
Blue stripe
Block # 60, 70



5" x 5" square
Med Taupe
Block # 26, 65



5" x 5" square
Beige Crackle
Block #27, 37



5" x 3" rectangle
Yellow Gold
Block #44, 74,
78, 82



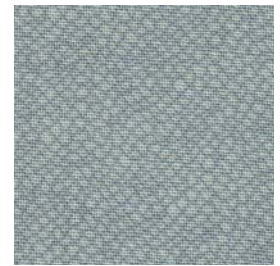
4" x 4" square
Lt Blue
Block #45



4" x 4" square
Med Gold
Block #57



4" x 4" rectangle
Yellow Gold
Block #24, 47, 68,
77, 79



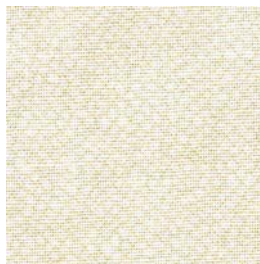
4" x 1" rectangle
Med Blue
Block #67



4" x 1" rectangle
Med Blue
Block #61



3" x 3" square
Med Beige
Block # 18, 21, 40



3" x 3" square
Off White
Block #23



3" x 3" square
Med Green
Block #13



3" x 3" square
Pale Green
Block #12



3" x 3" square
Med Blue
Block #17



3" x 3" square
Pink
Block #22



3" x 3" square
Med Yellow
Block #46, 92



3" x 3" square
Lt Gray
Block #110



3" x 3" square
Med Tan
Block #8, 102, 103,
108

Block # - page 2



3" x 3" square
Med Brown
Block #20, 97, 100,
101, 104, 106, 107,



3" x 2" rectangle
Dk Silver
Block #90, 91, 93,
96, 114



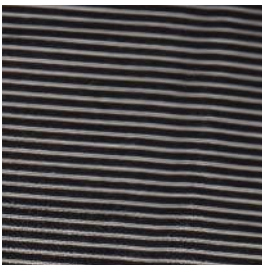
2" x 2" square
Pink
Block #55, 56



2" x 2" square
1895-250 Sahara
Block #62, 64



2" x 2" square
Black/White print
Block #36, 41



2" x 2" square
Black/White stripe
Block #35



2" x 2" square
Med Tan
Block #58

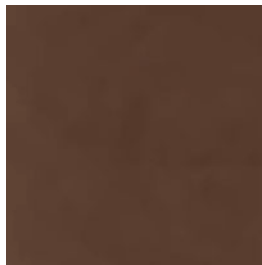


2" x 2" square
Hoffman 537 Black
Block #38, 39



2" x 2" square
Golden Brown
Block # 75, 76

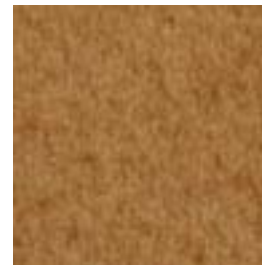
Ultrasuede Light



1" x 1" square
3615 Brownstone



1" x 1" square
4512 Green Grape



1" x 1" square
8269 Inca Gold



1" x 1" square
3623 Sable

Silk Velvet



3" x 3" square
Dyed Silk Velvet
Beetroot

P3-180-1 Button Set

