

# Applique with Pearl

## Baltimore Spring - Rabbits Bouquet Block

Pearl P Pereira

Copyright 2015



Join Pearl as she guides you through careful prep work for perfect appliqué results; and let her introduce you to the uniquely successful techniques she has developed. Learn her “Off the Block” prepared edge freezer paper appliqué techniques and build your appliqué directly onto the pattern. Each technique demonstration is projected on-screen with live stream video to ensure every participants full visibility of each step by step demonstration. Learn Pearl’s Six Elements for perfect appliqué: how to make her “any size Perfect Bias Stems”, reverse appliqué, sharp points, perfect circles, plus smooth concave and convex shapes and you’ll be able to tackle any appliqué project. Rabbits Bouquet block is from Pearl’s new Baltimore Spring quilt this is the workshop project, but please feel free to work and on appliqué project of your choice.

Skill Level: All levels

Pearl P. Pereira

Email [pearl@p3designs.com](mailto:pearl@p3designs.com)

[www.p3designs.com](http://www.p3designs.com)

# Basic Supply list

Supplies: Each Student must have their own iron, ironing mat and extension cord. Bring a personal light if you need extra lighting and small light box if you like using one.

**Each Student will receive pre-printed freezer paper sheets for the Bountiful Harvest block. Please no special request.**

- Off-The-Block Applique Book
- Clover Mini Iron II & ironing mat (I like June Taylor Cut n Press I)
- Clover Wedge Iron or small iron for ironing sheets of freezer paper together
- Cheri's Cool Tool iron for working with small shapes
- Appliqué Stiletto and Appliqué Pressing Tool
- Appliqué Template Paper or Freezer Paper ½ yard
- Fiskar small Curved Scissors for cutting templates
- Sharp fabric scissors
- 1/4" thick foam core board the size of your project (used to mount and transport home your project)
- Parchment Paper the kind you bake with large enough to cover your foam core board
- Clover 3/4" applique pins
- Pentel Aquash Water Brush for spray starch (found at Michaels or Amazon.com) or ¼" stencil brush
- Roxanne's Glue Baste It
- The Applique Pressing Sheet 13" x 17" for pressing freezer paper
- Spray Starch and small container
- ¼" stencil brush
- Travel size rotary cutter & mat (5 ½" x 8 ½") or your favorite size
- Pencil
- Black and Red Extra Fine point Sharpie pens for tracing and marking templates
- Straw Needle #11 or your favorite appliqué needle
- Thimble
- Your favorite appliqué thread to match fabrics, I like Superior Threads Kimono # 100 Silk threads
- Hot Iron Cleaner - Optional but you may need to clean your iron
- Fabric to make your project

## **Preparation work before class:**

1. Prewash background fabric and iron.
2. Cut and square up with pinking rotary blade.

Optional – Light box , Ott light





# Baltimore Spring

Pearl P. Pereira

## Block # 10

### Rabbits Bouquet page 1



13 1/2" x 13 1/2"  
RJR Home Essentials  
0016-40



7" sq  
Hoffman 1895-178 leaf  
# 3, 10, 15, 19, 24,  
29, 35, 41, 46



7" sq  
Batik Med Green  
# 4, 11, 33, 40



7" sq  
Hoffman  
med green  
# 9, 34, 45



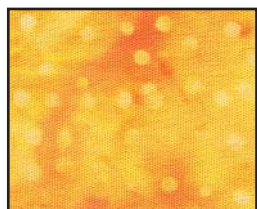
5" sq  
Kaufman Fussions  
5573-18 Acorn  
# 53



5" sq  
Hoffman  
1895-573-Pecan  
# 2, 51, 52



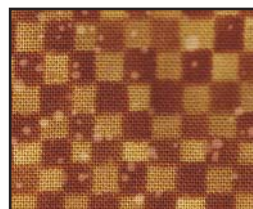
5" sq  
Andover Dimples  
P0260-1867-N8  
# 59, 61



4" sq  
Kaufman 7201-126  
Marigold  
# 17, 27, 43, 64, 65



4" sq  
Batik yellow stripe  
# 18, 28, 44



4" sq  
Benartex check  
# 54, 55



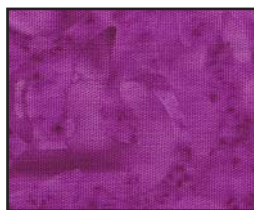
4" sq  
Kaufman Fusions  
# 57, 58



4" sq  
Batik Dk purple  
# 7, 23, 38



4" sq  
Batik Dark purple  
# 8, 22, 39



4" sq  
Batik med purple  
# 6, 21, 37



3" sq  
RJR 4732-01  
# 5, 20, 36



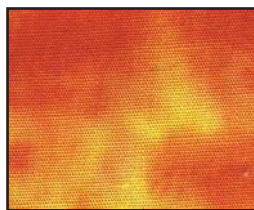
3" sq  
Hoffman 1895-253  
Havana  
# 1, 56



3" sq  
RJR Thimbleberries  
golden brown old  
# 60



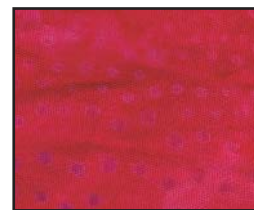
3" sq  
Moda 3940  
# 63



3" sq  
Hoffman 1895-392  
scrambled eggs  
# 16, 26, 42



3" sq  
Batik old dk rose  
# 13, 31



3" sq  
Batik med rose  
# 14, 32

# Baltimore Spring

Pearl P. Pereira

## Block # 10

### Rabbits Bouquet - page 2



3" sq  
1764-03 Sumatra  
# 49, 50



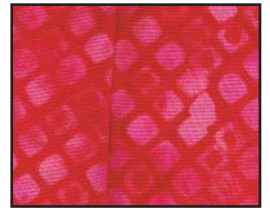
2" sq  
Windham 3192  
# 62



2" sq  
Hoffman  
1895-417  
# 25



2" sq  
Batik  
Pale yellow dot  
# 66, 67



2" sq  
Batik Lt rose  
# 12, 30



2" sq  
Batik Red dot  
# 48



2" sq  
black red print  
# 47



2" sq  
Hoffman  
537 blacklight  
# 68, 69



1" sq  
Red Rooster  
2140-Gol1  
# 70