

Clip-It Wall Plaque & Stash-It Sack

Project Instructions



Finished Size: Clip-It Plaque: 19" x 9" (48.26cm x 22.86cm)
Stash-It Sack (makes two): 8" x 8 3/4" (20.32cm x 22.22cm)



Supplies Needed

- 3 Fabric Palette® Fat Quarters:
 - 2 Coordinating (plaque)
 - 1 Non-directional (sack)
- Walnut Hollow® 19" x 9" innkeeper signboard
- 3 Nicole Crafts® giant wooden clothespins (6")
- Picture hanger hardware, hammer
- Craft paint (coordinate with plaque fabric), paint brush
- Paper for patterns
- Wood glue
- Mod Podge®, sponge brush
- Spool of 1/4" craft ribbon and safety pin
- Basic crafting and sewing supplies
- Sewing machine
- Iron

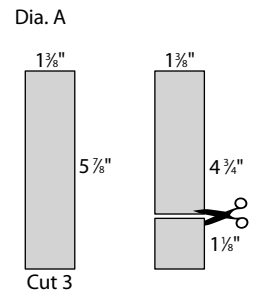
Before you begin

Read all instructions before beginning project. Do not prewash fabrics. Press fabrics and trim off selvages before beginning project. Use a 1/4" seam allowance and sew fabrics with right sides together (RST) unless otherwise noted. Backstitch at the beginning and end of a seam to secure stitches.

Clip-It Wall Plaque

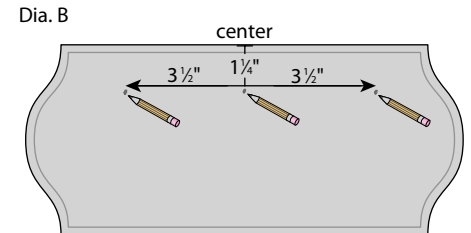
1. Take clothespins apart. Paint the clothespin pieces and plaque using several coats of paint to cover completely. **Note:** Allow paint to dry thoroughly after each coat.
2. To make a pattern for the top surface of the plaque, place a piece of paper slightly larger than the plaque centered on top.
3. Hold the paper in place and using the side of a pencil or crayon, mark the edges of the raised surface of the plaque. Remove paper and cut out on marked line.
4. Using the paper pattern, cut out the cover from a coordinating fat quarter.
5. Use the Mod Podge® to adhere the cover to the front. Allow to dry completely and add several more coats to seal and protect the fabric.
6. On the back of the plaque, attach the hanger 1" from center, top edge.

7. Cut three $1\frac{3}{8}$ " x $5\frac{7}{8}$ " clothespin covers from remaining coordinating fat quarter, centering design motifs as desired (Dia. A). Cut each cover into two pieces: $1\frac{3}{8}$ " x $4\frac{3}{4}$ " and $1\frac{3}{8}$ " x $1\frac{1}{8}$ ".



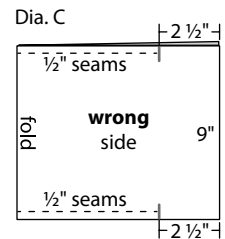
8. Lay out three clothespin halves with **flat sides up**. Following manufacturer's instructions, use the Mod Podge® to adhere the cover pieces to the clothespins. Allow to dry completely and add several coats to seal and protect the fabric. Trim slightly if necessary. **Note:** Center motifs (if applicable). When thoroughly dry, reassemble clothespins so that each has fabric on one side.

9. On the front of the plaque, find the center and measure $1\frac{1}{4}$ " down from the top edge; lightly mark. Then, measure and mark $3\frac{1}{2}$ " on each side of the center (Dia. B). With fabric facing up, center the middle clothespin. Place the tops and inner edges of remaining clothespins along the marks. Use wood glue to attach to the plaque; leave flat and allow glue to dry completely.



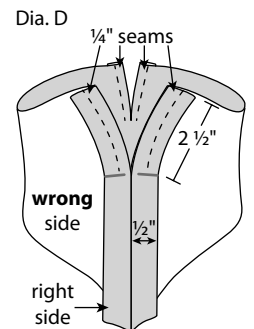
Stash-It Sack

1. Cut the non-directional fat quarter in half horizontally into two 21 " x 9 " pieces. Set one piece aside. Fold remaining piece in half with RST matching the short ends. Mark $2\frac{1}{2}$ " from the top corners along the sides. Starting and stopping at the marks, sew the side seams $\frac{1}{2}$ " from the edge of the fabric (Dia. C).



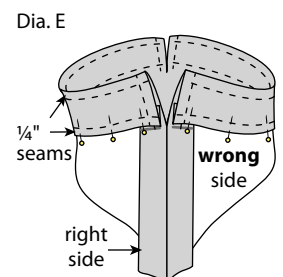
2. Press the seam allowances open at the top edges of the bag. Stitch $\frac{1}{4}$ " from the opening to hold seam allowances in place on both sides of casing (Dia. D).

3. Fold the top edges $\frac{1}{4}$ " to the **wrong** side; press well. Fold over again to the marks on the sides; press. Pin edges and stitch $\frac{1}{4}$ " from both the top and bottom folds to make the casing (Dia. E). Turn bag right side out.



4. Cut two 20 " pieces of ribbon for drawstrings and attach safety pin to the end of one ribbon. At one side opening, feed safety pin through the entire casing until it comes out the casing on the same side where it was inserted. Remove safety pin and tie ends together with an overhand knot. Repeat with the second ribbon, starting at the opposite side of the bag.

5. Repeat steps 1-4 to make a second drawstring bag (optional).



Finishing

6. Hang plaque as desired and use clothespins to attach bag(s), notes, etc.

Finished Care Instructions

Dust plaque with a soft cloth as needed. Hand wash bag in cool water, hang to dry. Press if needed.