

Tablet Case

Finished Size: 5 7/8" x 8 3/4"



Supplies Needed

- 2 Fabric Palette® Hootenanny Fat Quarters (18" x 21")
- 11" x 16" Low-loft cotton batting
- 1 Large snap (size 3)
- Decorative button - 1" (optional)
- Coordinating thread
- Rotary cutter, mat and acrylic ruler
- Basic sewing supplies
- Sewing machine
- Iron and pressing surface

Before you begin

Read all instructions before beginning project. Sew all fabrics together with a 1/4" seam allowance and right sides together unless directed otherwise.

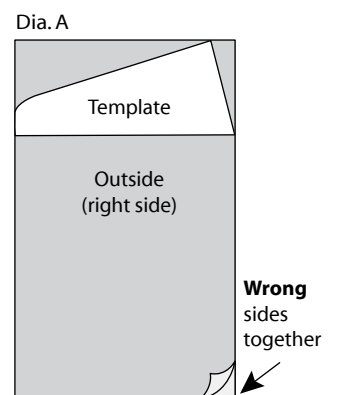
Cutting

Turq. Diamonds: 1 – 9 1/2" x 15 1/2" (cover)
1 – 5" x 5 1/2" (charger pocket)

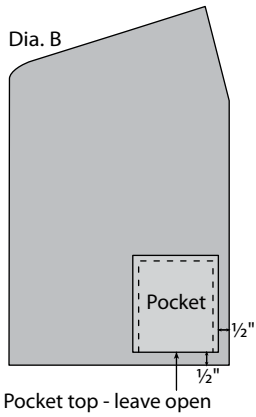
Pink Scribble: 1 – 9 1/2" x 15 1/2" (lining)
1 – 5" x 5 1/2" (charger pocket)

Sewing

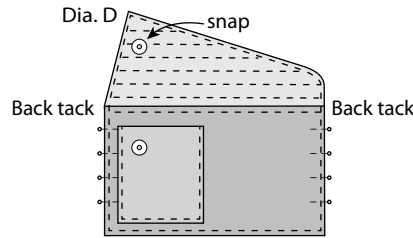
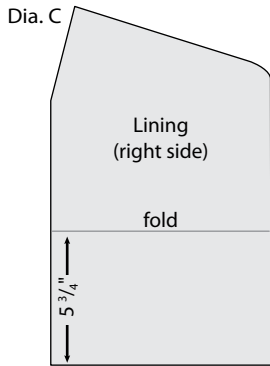
1. Place Turq. Diamonds cover and Pink Scribble front lining pieces **wrong** sides together with cover on top. Place flap template along one short edge near the top (Dia. A). Pin and cut shape.
2. To make the charger pocket, place the Turq. Diamonds and Pink Scribble charger pocket pieces right sides together. Sew around all sides, leaving a 2" opening for turning. Turn right side out and press.



- Place pocket vertically near the bottom right corner of the cover $\frac{1}{2}$ " from side and top. Pin and topstitch around three sides, leaving the top edge open (Dia. B). **Note:** Back tack at the beginning and end of stitching.



- Lay cover on batting with right side up; pin and cut out shape. Place lining on top of cover with right sides together; pin. Sew around all sides, leaving a 3" opening on one short side for turning. Turn right side out, press edges and topstitch on the short straight edge.
- Lay cover with lining face up on a flat surface. Measure up $5 \frac{3}{4}$ " from the short straight edge and fold the edge up; pin sides (Dia. C). Starting at one side, topstitch close to the edge, back tacking at the top edge. Continue topstitching around the flap, back tacking at the top edge and ending at the bottom of the other side. Stitch across bottom of flap at the fold. Then stitch six additional rows $\frac{3}{8}$ " apart on the flap (Dia. D).



Full-size Template for Flap

- Determine placement and apply large snap to the pocket (only) and the back side of the flap at the pointed end.

Finishing

- Optional:** Determine placement of decorative button and sew to cover.

Finished Care Instructions

Spot clean with a lightly dampened cloth when needed.