



# Project Instructions

## Birdie Playmat

**Skill Level 3:**  
Experience necessary  
**Approx. Crafting Time:**  
Weekend project

Finished Size: 34" x 41"

## Supplies Needed

- 2 Land of Whimzie® So Tweet Fabric Quarters:  
Tiny Floral  
Turq. Fixed Dot
- Land of Whimzie® So Tweet Fabrics:  
1 ½ yd. Multi Paisley  
1 yd. Pink Tonal Dot
- 3 ½ yds. batting, 36" wide
- Coordinating Thread
- Removable marker
- Scissors
- Tape
- Basic sewing supplies
- Sewing machine
- Iron and pressing surface



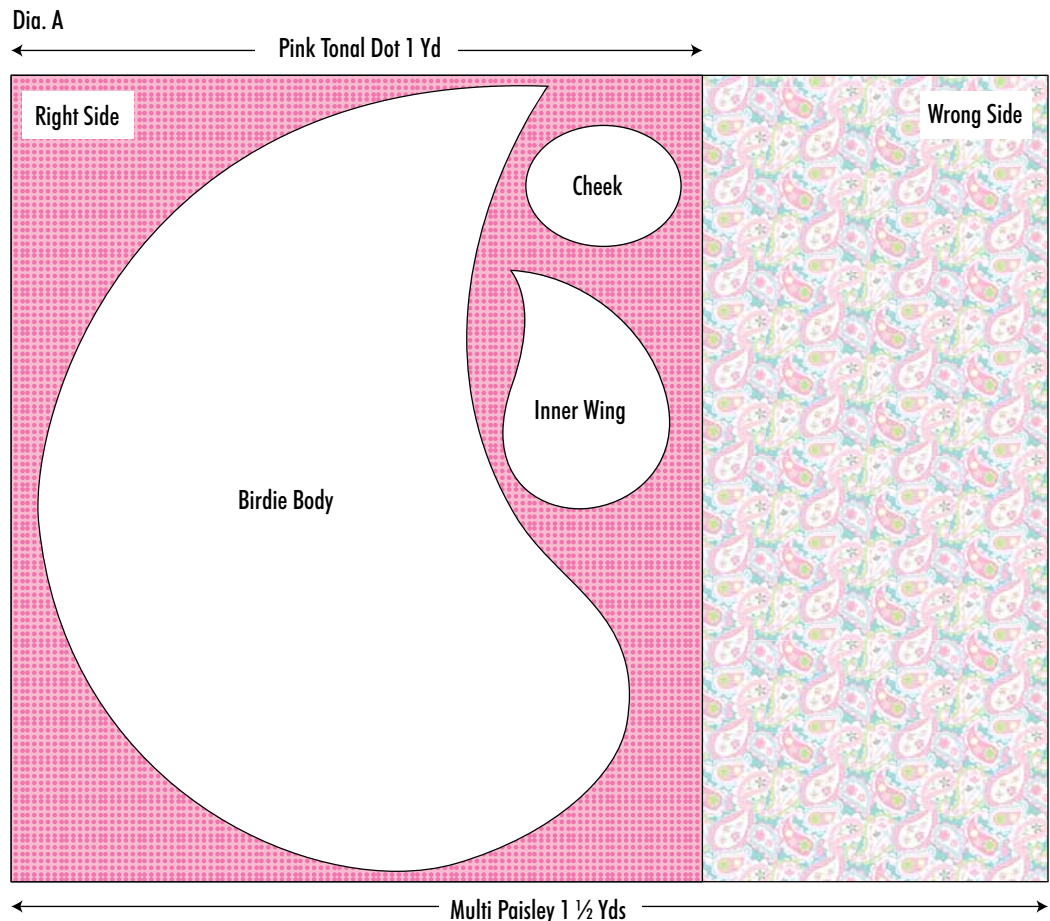
## Instructions

*Read all instructions before beginning project. Do not pre-wash fabrics. Use a ¼" seam allowance and sew fabrics with right sides together (RST) unless otherwise noted. Before cutting, press fabrics with a dry iron on cotton setting. Print out pattern pieces (without scaling), cut out along outside lines and tape together (do not overlap). Trace Beak pattern on separate paper.*

### 1. Cutting:

Cut fabrics around outside edges of pattern pieces as indicated below.

- Place the Multi Paisley and Pink Tonal Dot fabrics **wrong** sides together and position the Birdie Body, Inner Wing and Cheek as shown in Diagram A: pin and cut out.



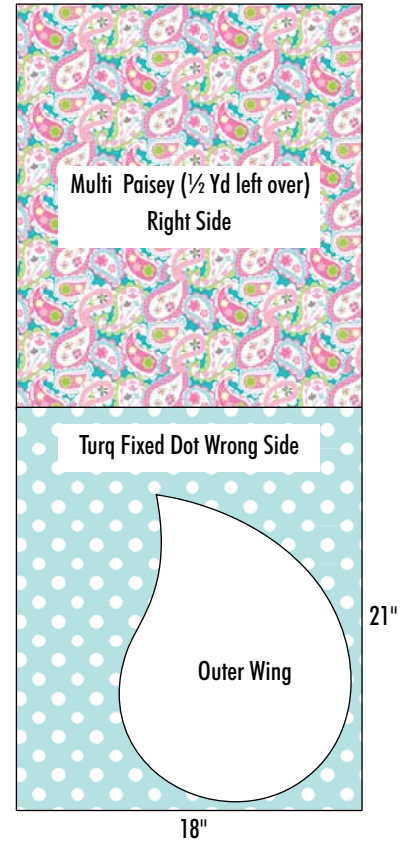
**Care instructions:** Machine wash gentle, cool water; air dry.

Page 1 of 25

## Project Instructions Continued

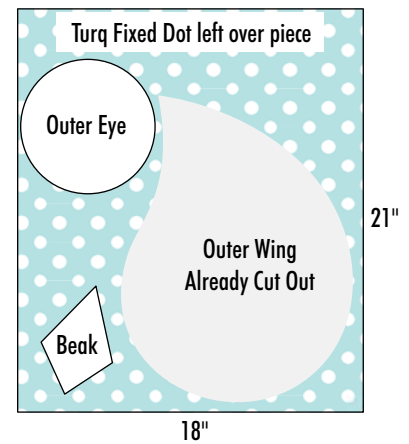
- Place the remaining Multi Paisley fabric RST with the Turq Fixed Dot fabric and position the Outer Wing pattern as shown. Cut out the Outer Back Wing (Multi Paisley) and the Outer Front Wing (Turq Fixed Dot) together as shown in Diagram B.

Dia. B



- Position the Outer Eye and Beak on the remaining Turq Fixed Dot as shown in Diagram C.

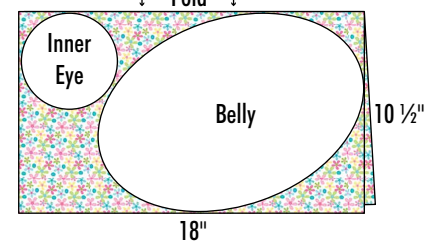
Dia. C



- Fold the Tiny Floral Fat Quarter with **wrong** sides together so 18" edges meet. Position the Belly and Inner Eye pieces as shown in Diagram D and cut two Belly pieces and one Inner Eye.

- From batting, using patterns cut:
  - 2 – Bird Bodies
  - 1 – Outer Wing
  - 1 – Inner Wing
  - 1 – Belly
  - 1 – Cheek
  - 1 – Beak

Dia. D





**B**

**P**

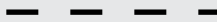
**LEAVE OPEN**

2. Transfer markings from Birdie Body pattern to the right side of the Pink Tonal Dot Birdie Body.
3. Place the Bird Bodies RST with edges even and lay on top of the two layers of Bird Body batting. Pin securely around all edges and sew using a  $\frac{1}{2}$ " seam allowance, leaving an opening at the bottom as indicated on pattern. Trim batting close to stitching, trim corners and clip curves. Turn right side out; hand stitch opening closed and press. Topstitch  $\frac{1}{4}$ " from outside edge.
4. Repeat Step 3 to sew the Inner Wing, Outer Wing, Belly, Cheek and Beak using  $\frac{1}{4}$ " seam allowance.
5. Place Inner Wing on top of Outer Wing (as indicated on pattern) and topstitch  $\frac{1}{4}$ " from edge to attach.
6. Place Wing on Bird as indicated on pattern and topstitch  $\frac{1}{4}$ " from edge through all layers to attach.
7. Repeat Step 6 to attach the Belly, Cheek and Beak referring to pattern for placement.
8. Make two Yo-yos for the Outer and Inner Eyes. Fold the edge to the **wrong** side approximately  $\frac{1}{8}$ " and hand stitch inside the folded edge using a long running stitch; pull thread to gather. Tie ends securely.
9. With the gathered sides facing up, center the Inner Eye on top of Outer Eye and hand stitch together.
10. Pin Eye to Birdie Body as indicated on pattern and hand stitch in place.

**Belly**

**Cut 2 - Tiny Floral**

**BB**



**Leave Open**

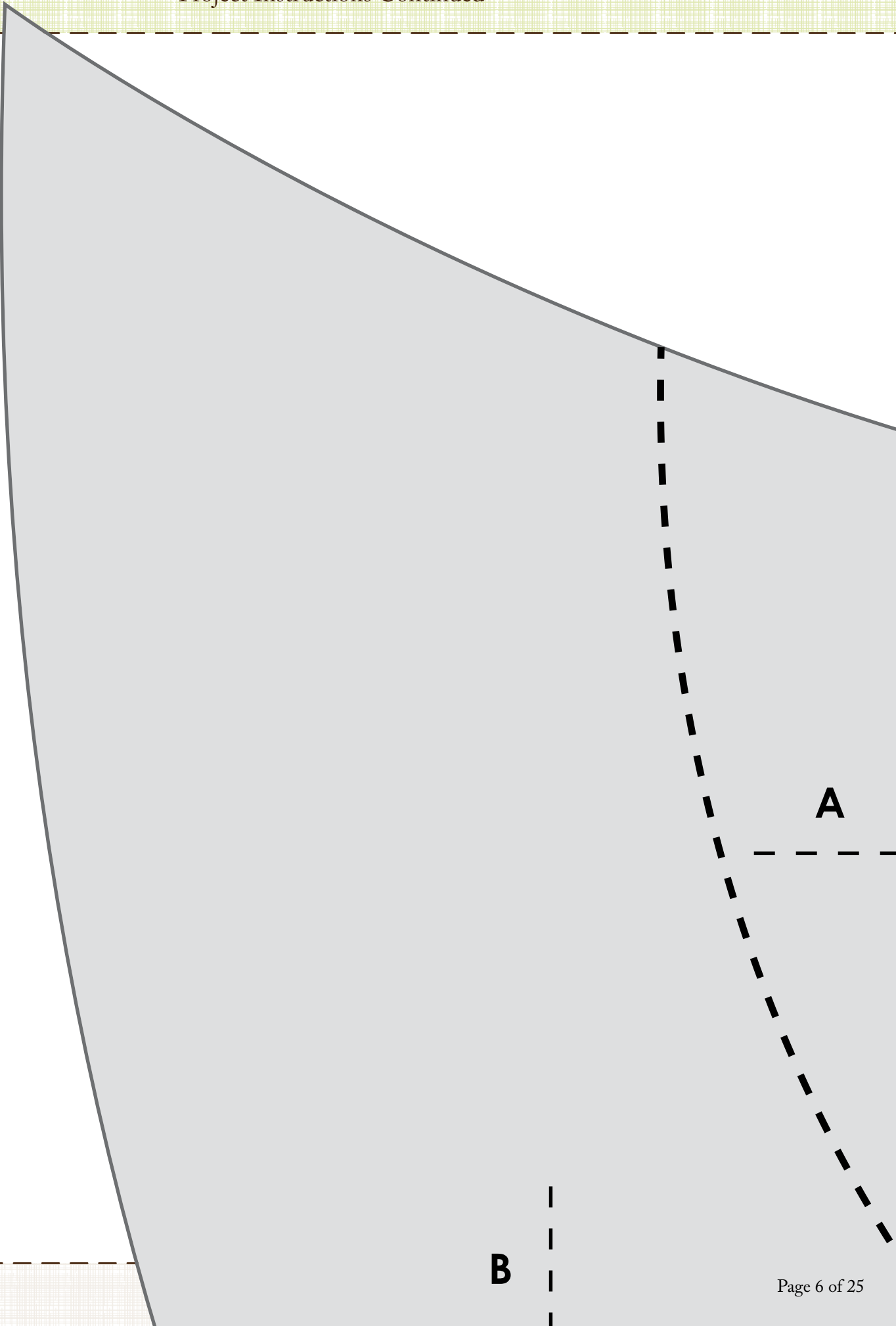


**Belly**

**Cut 2 - Tiny Floral**

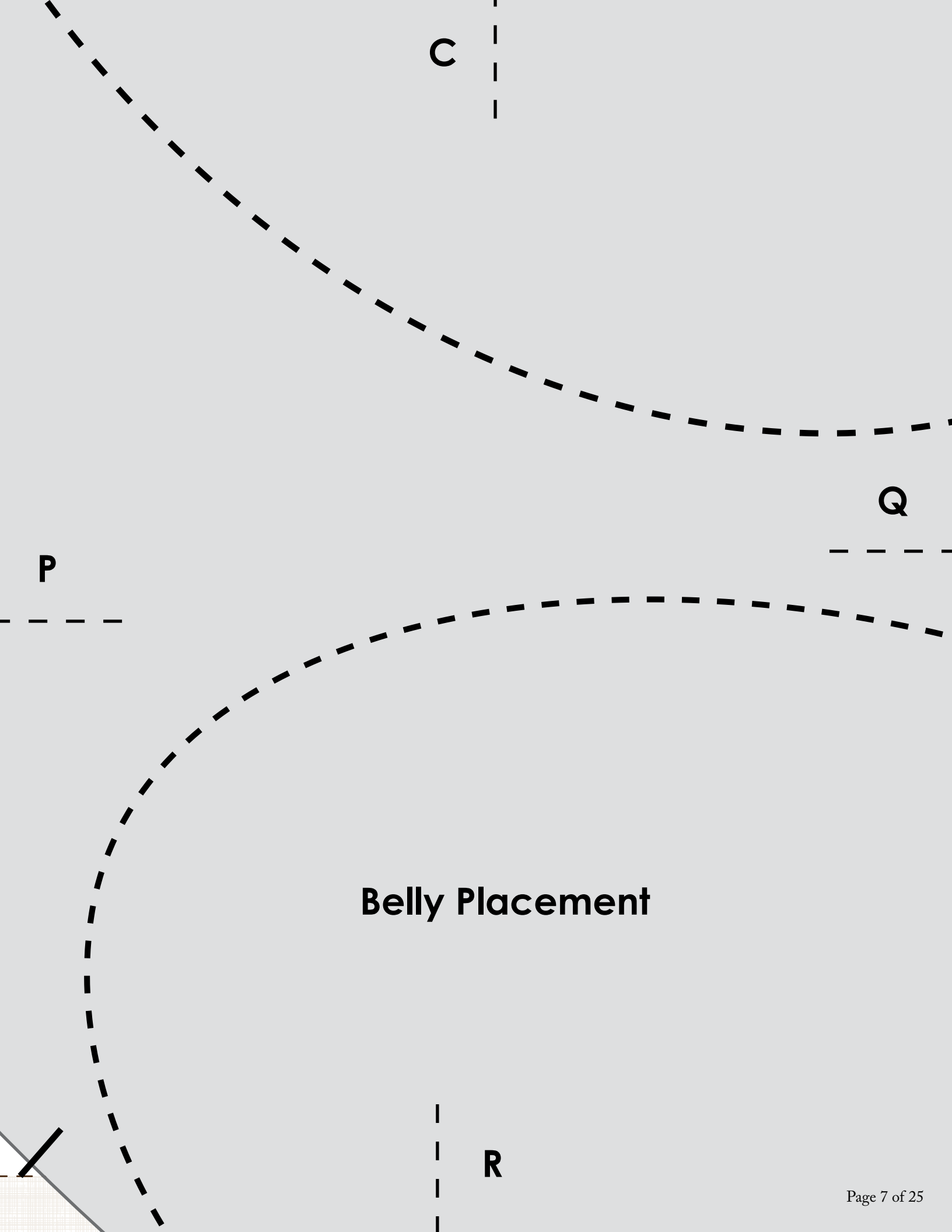
**BB**

**Leave Open**



**A**

**B**



C

P

Q

Belly Placement

R

E

# Birdie Body (RIGHT SIDE UP)

Q

S

Belly Placement

T



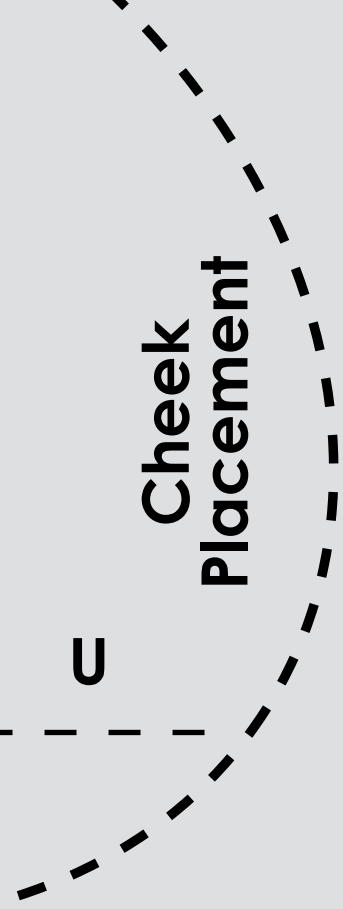
G

# Cheek Placement

U

S

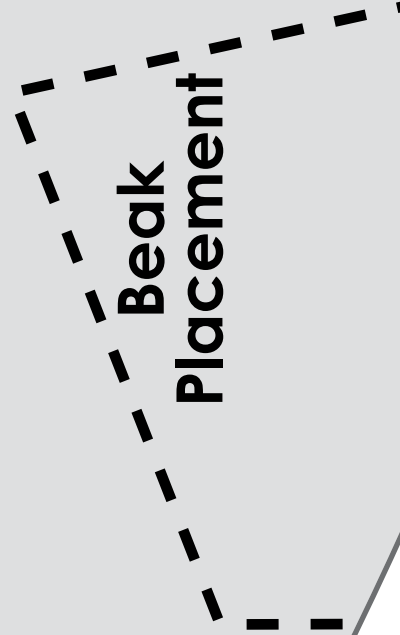
V



AA

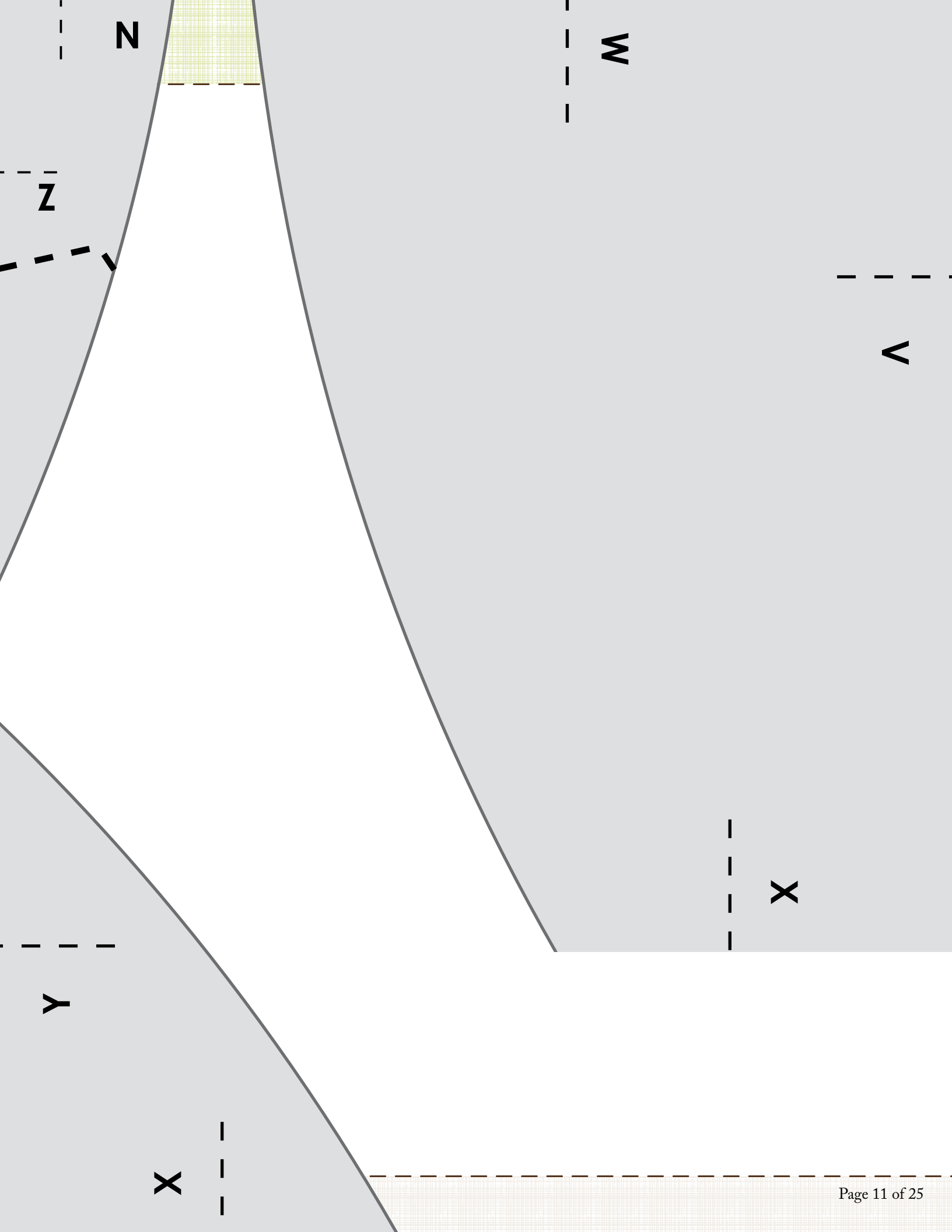


Z



Y





N

W

Z

V

Y

X

X

**Belly Placement**

**T**

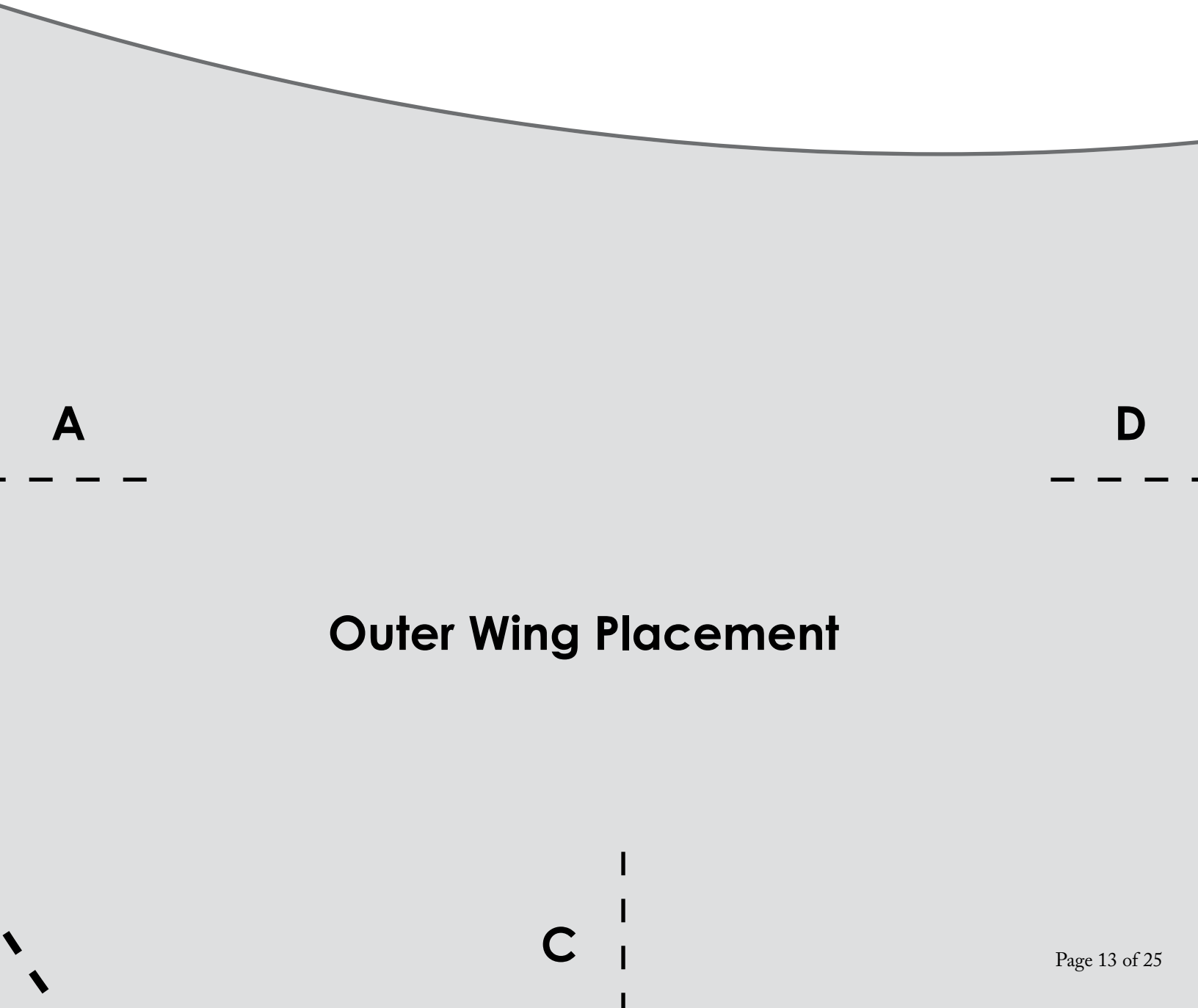
**ZZ**

**W**

**Belly Placement**

**R**

**ZZ**

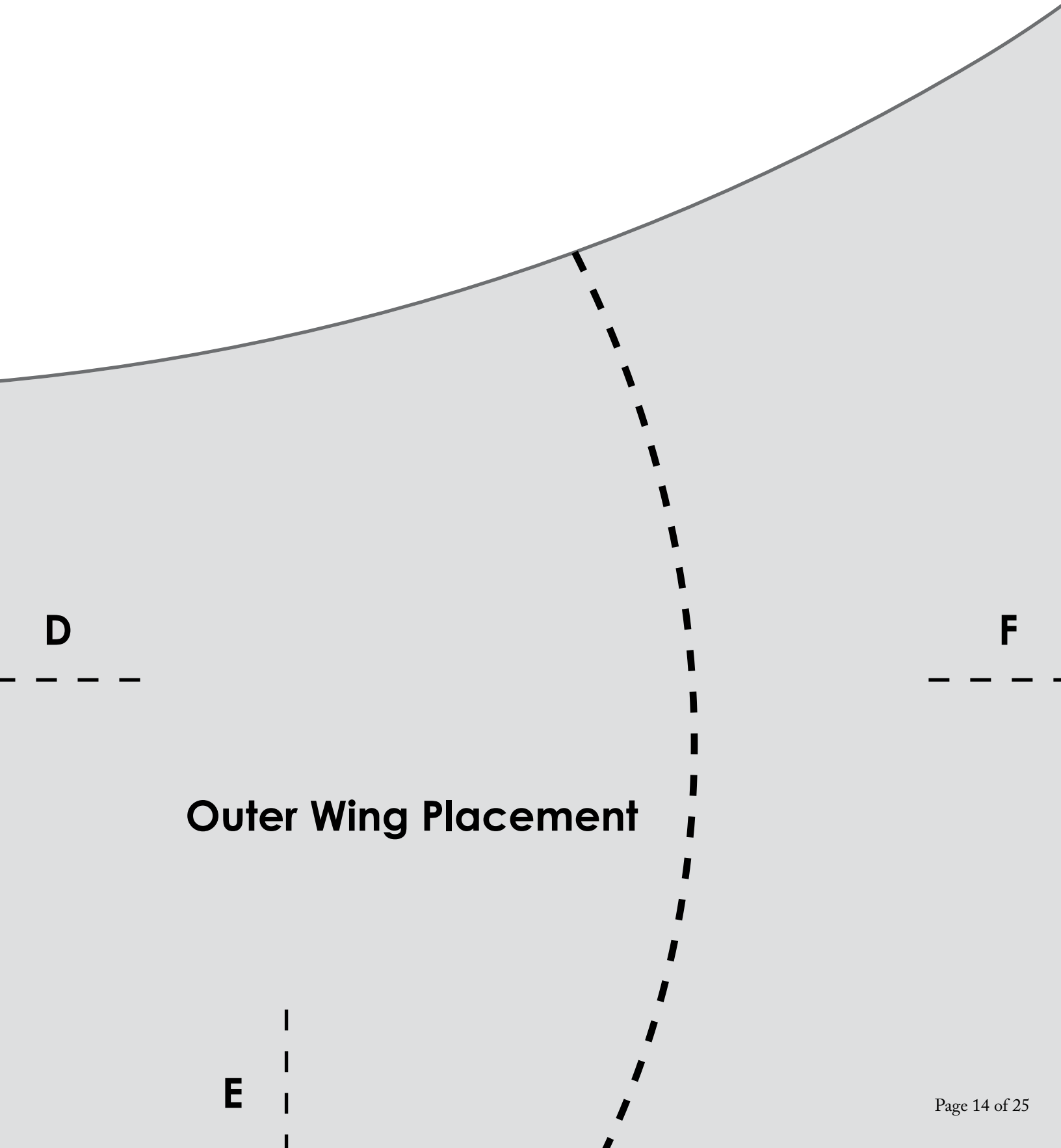


**A**

**D**

## Outer Wing Placement

**C**

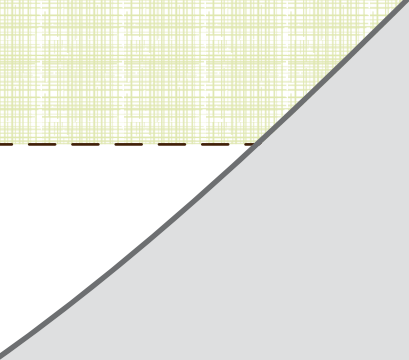


D

F

**Outer Wing Placement**

E



**J**

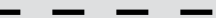


**Birdie Body**  
**Cut 1 - Pink Tonal Dot**  
**Cut 1 - Multi Paisley**

**H**



**F**



**G**

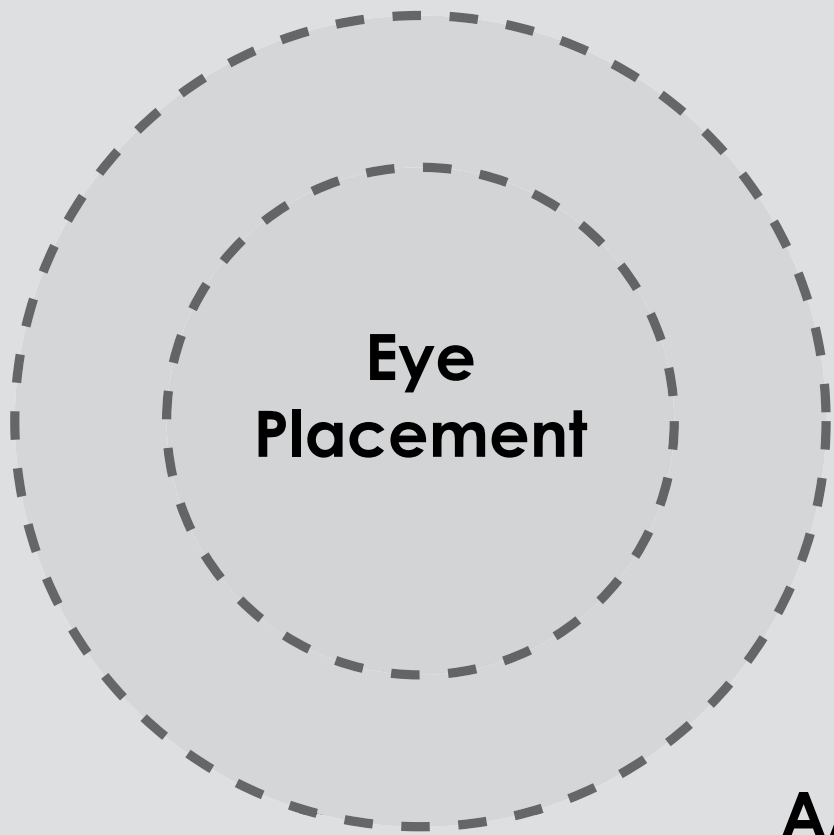


**Cheek  
Placement**

L

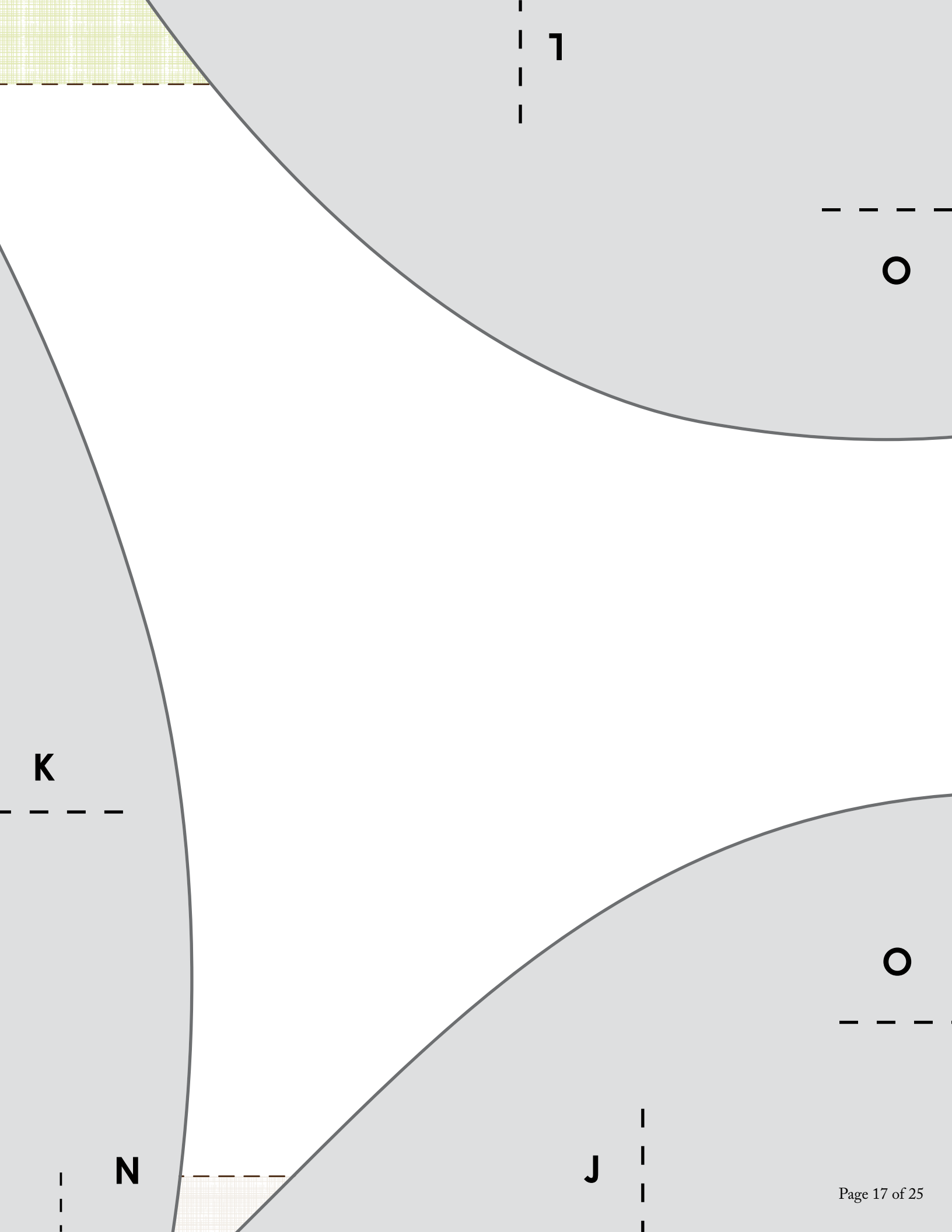
H

K



AA





I

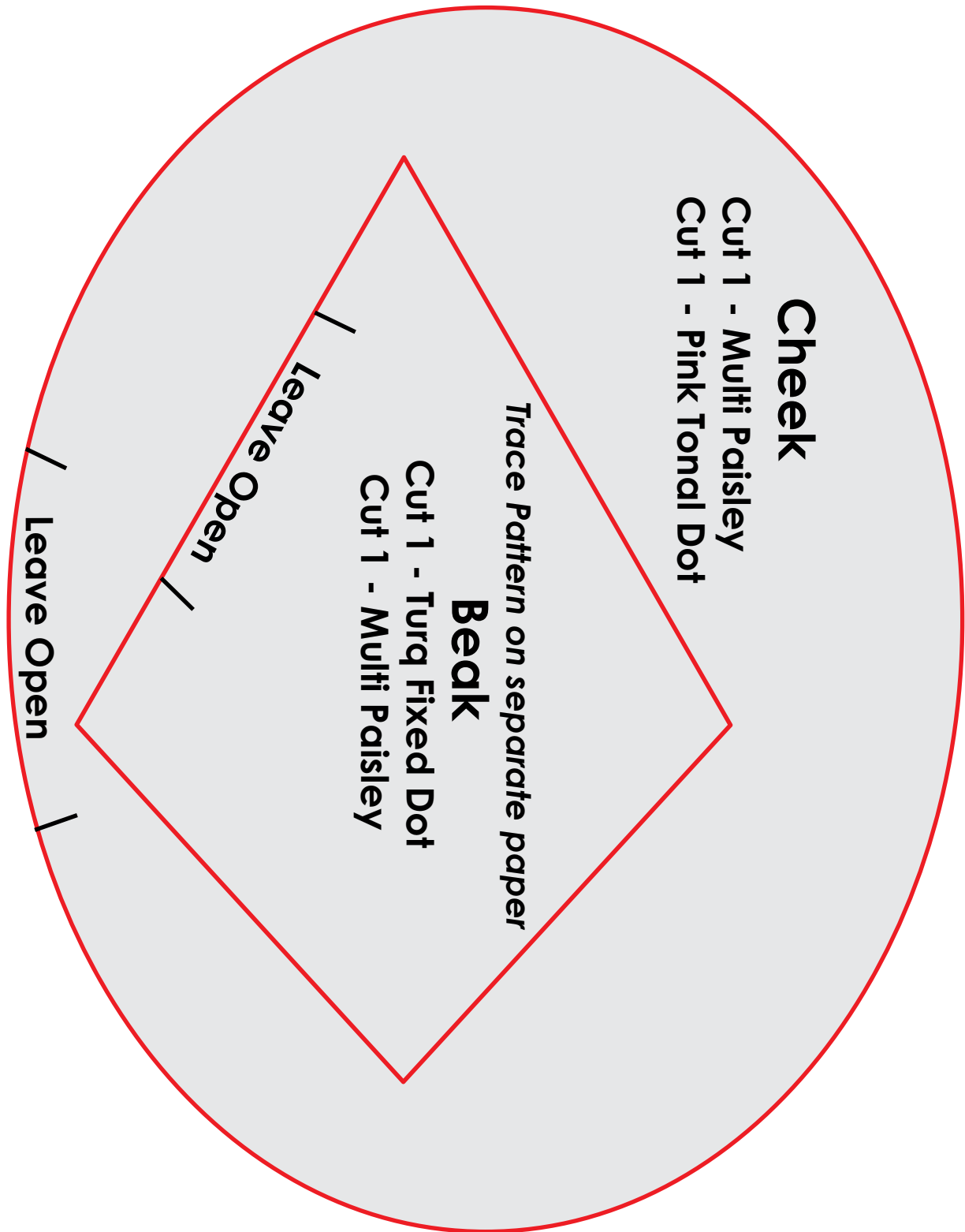
K

N

J

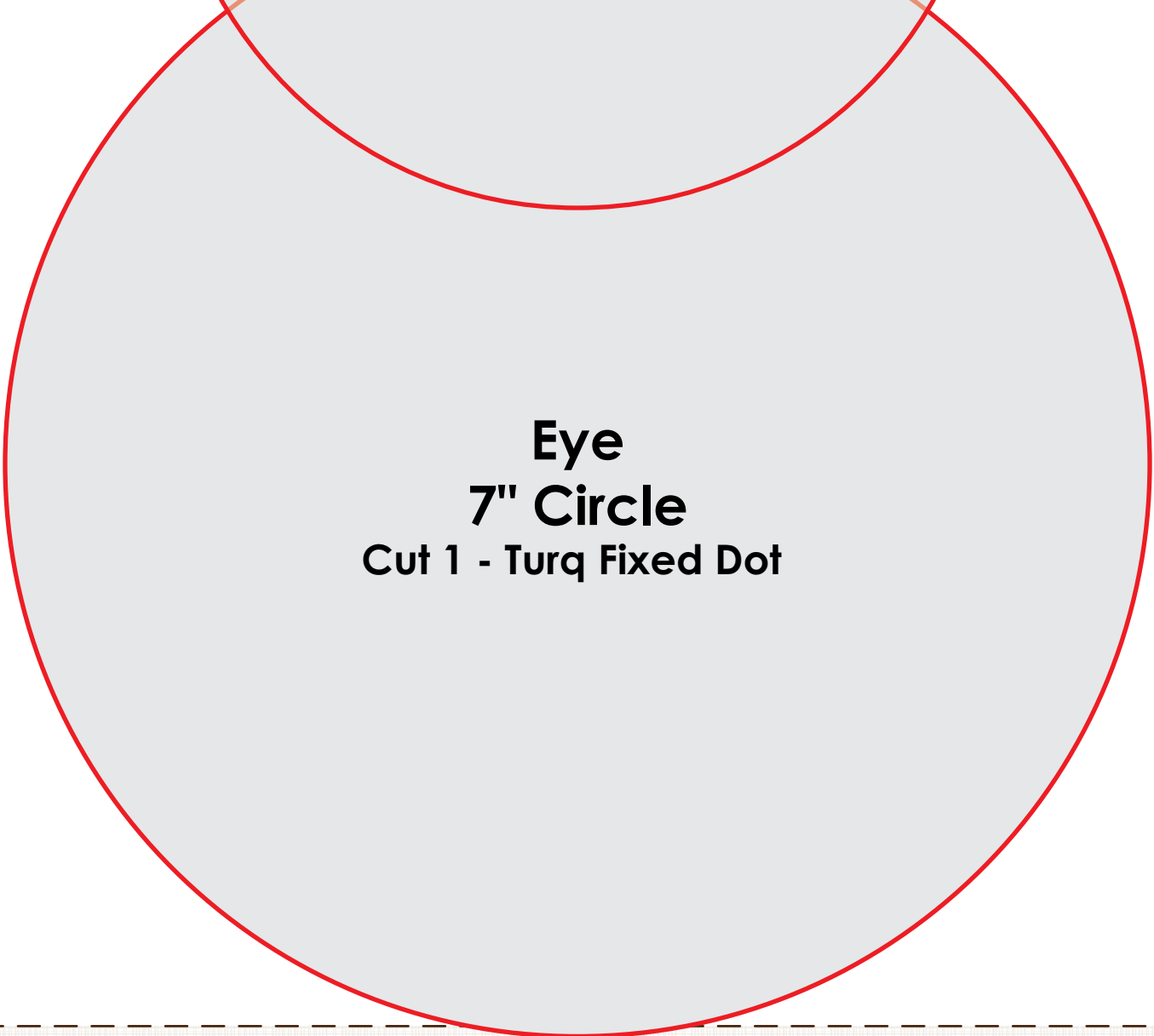
O

O





**Eye**  
**5" Circle**  
**Cut 1 - Tiny Floral**



**Eye**  
**7" Circle**  
**Cut 1 - Turq Fixed Dot**

HH

**Inner Wing**

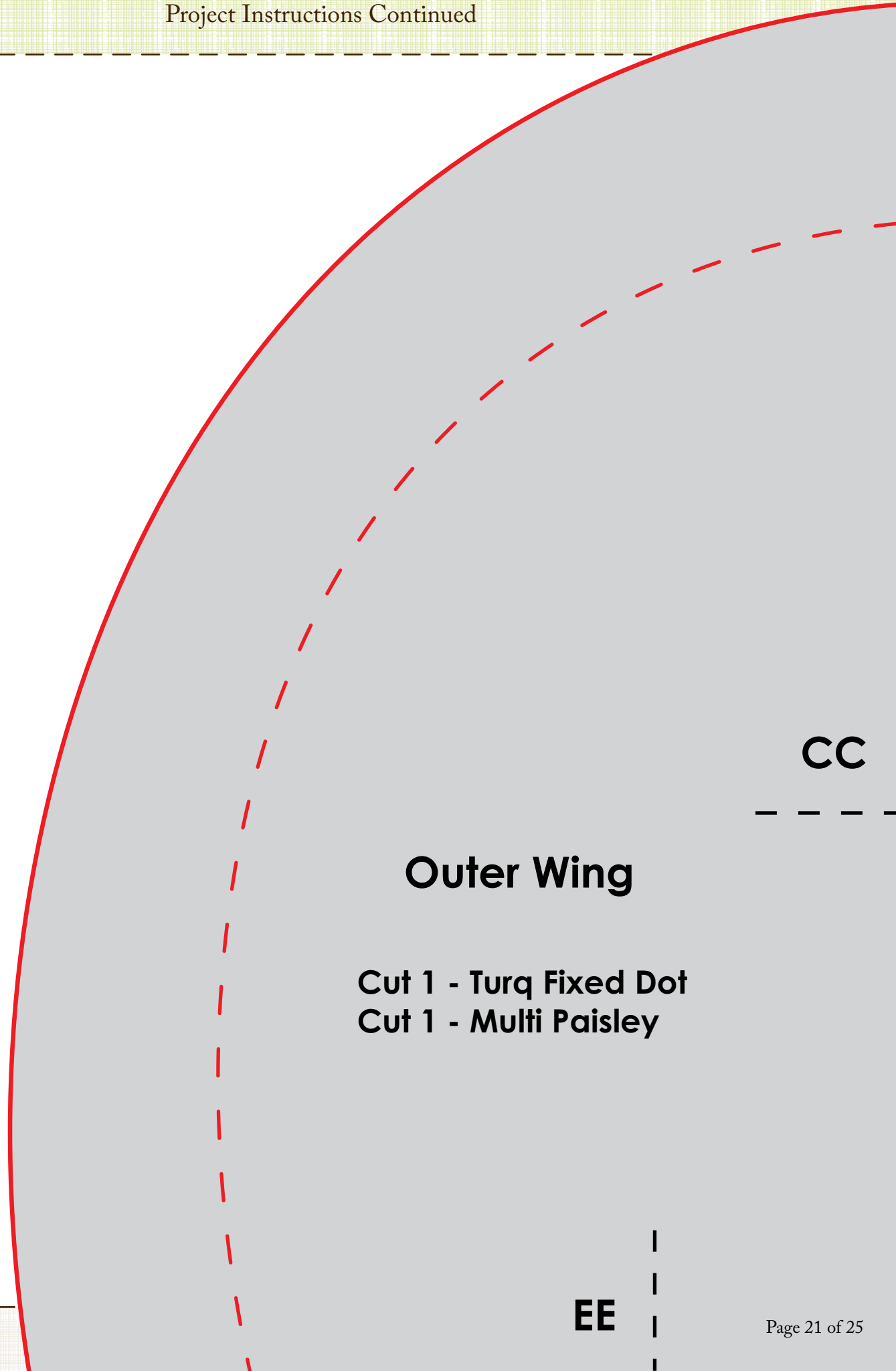
Cut 1 - Multi Paisley  
Cut 1 - Pink Tonal Dot

**Inner Wing**

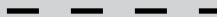
Cut 1 - Multi Paisley  
Cut 1 - Pink Tonal Dot

FF

HH



**CC**

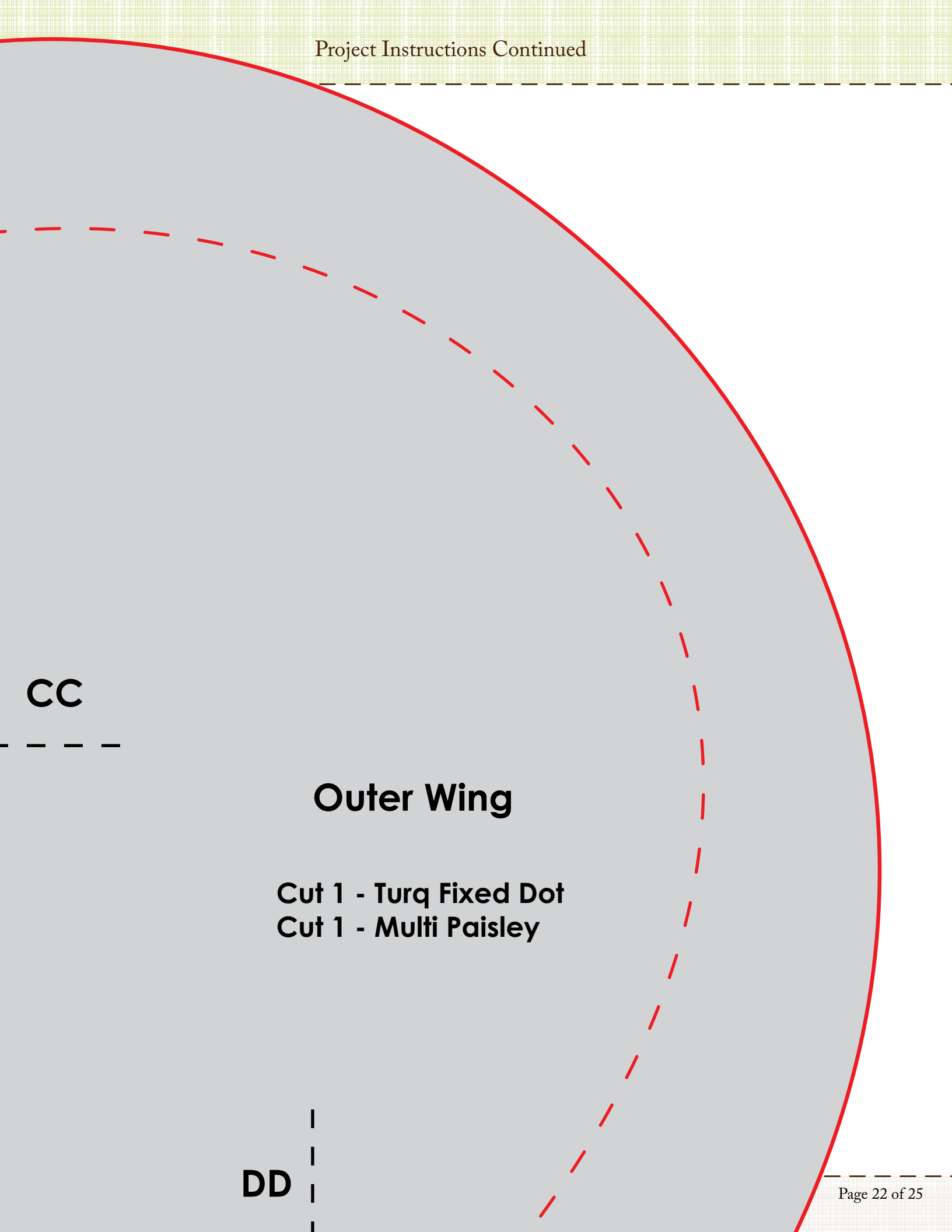


**Outer Wing**

**Cut 1 - Turq Fixed Dot**  
**Cut 1 - Multi Paisley**

**EE**





CC

**Outer Wing**

**Cut 1 - Turq Fixed Dot**  
**Cut 1 - Multi Paisley**

DD

## Inner Wing

Cut 1 - Multi Paisley

Cut 1 - Pink Tonal Dot

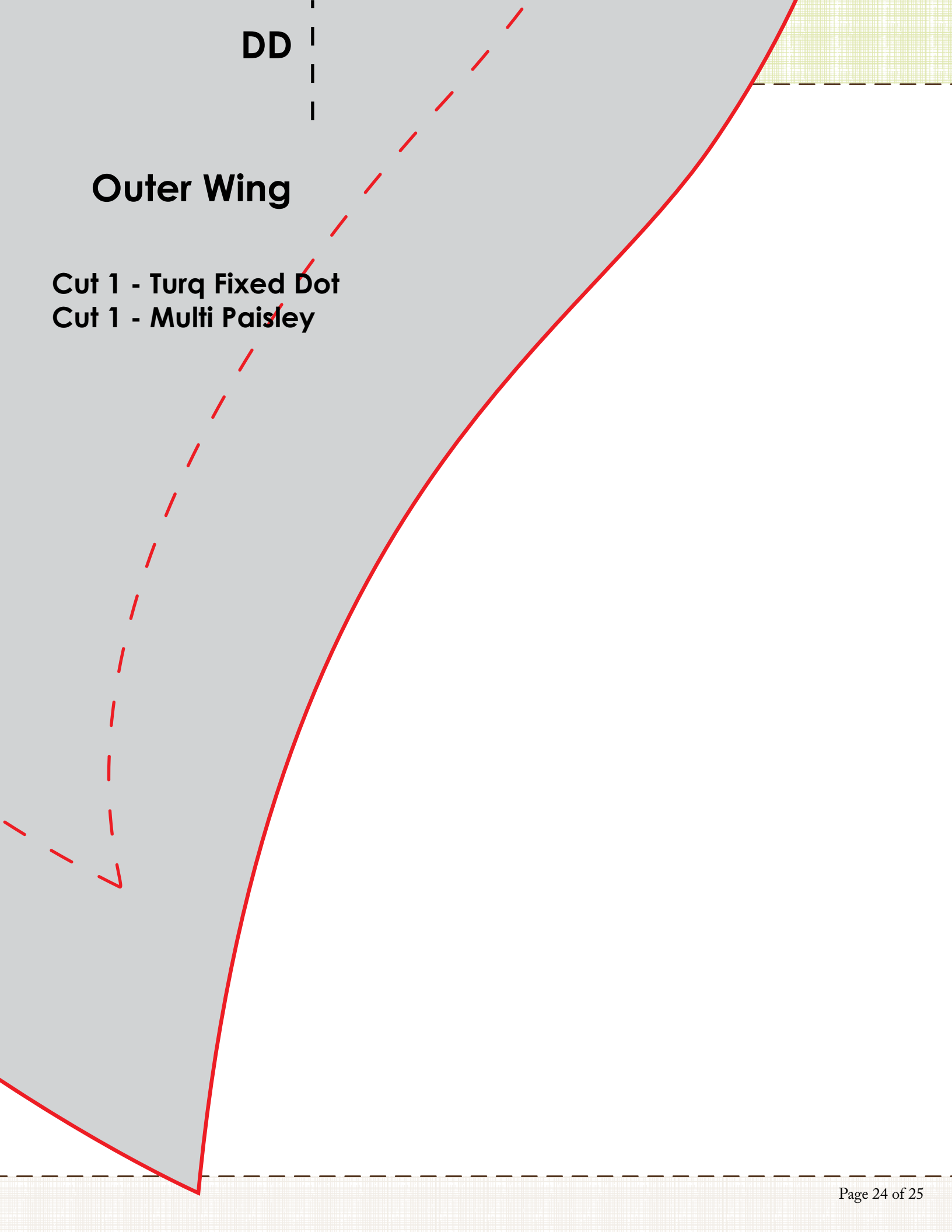
**FF**

**GG**

**DD**

# Outer Wing

**Cut 1 - Turq Fixed Dot**  
**Cut 1 - Multi Paisley**





GG

# Inner Wing

Cut 1 - Multi Paisley  
Cut 1 - Pink Tonal Dot

Leave Open

LEAVE OPEN

Cut 1 - Turq Fixed Dot  
Cut 1 - Multi Paisley

# Outer Wing

EE