

Reversible Slouch Bag

Finished Size: 15" x 24" (includes straps)



Supplies Needed

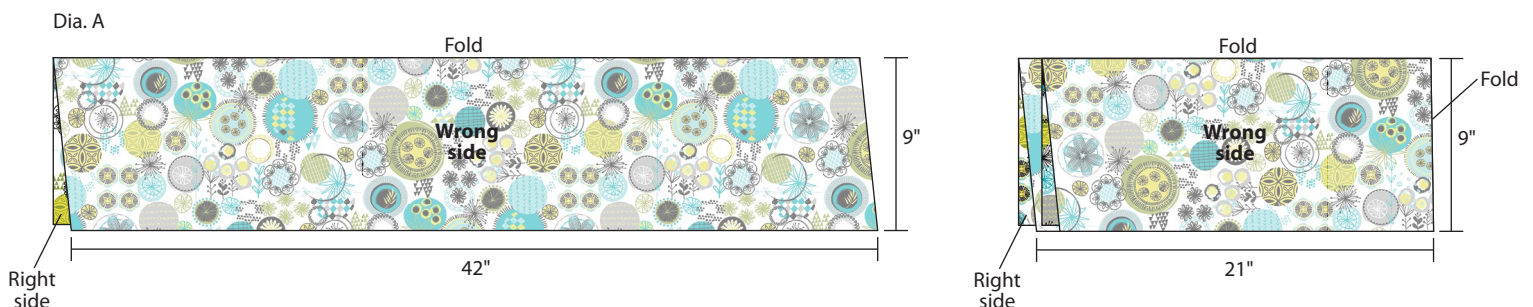
- 2 Fabric Palette® Half Yards (18" x 42") - coordinating
- 1 ¼ yds. Lightweight fusible interfacing - 20" x 45"
- Coordinating thread
- Ruler
- Pencil or fabric marker
- Wooden dowel rod
- Tape
- Basic sewing supplies
- Sewing machine
- Iron and pressing surface

Before you begin

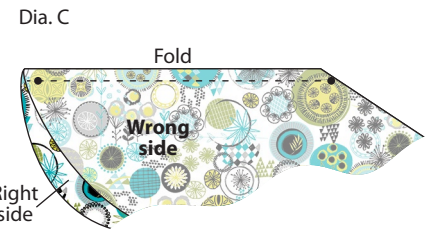
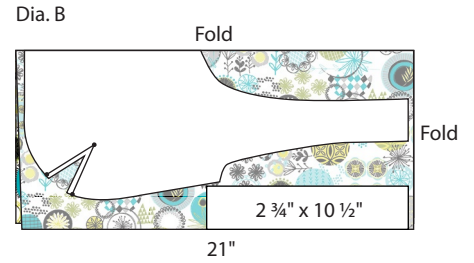
Read all instructions before beginning project. Do not prewash fabrics. Before cutting, press fabrics with a dry iron. Use a ¼" seam allowance and sew fabrics with right sides together (RST) unless otherwise noted. **Note:** When printing, check that page size is set to actual size and compare printout with the measurements noted on the pattern.

Cutting

1. Cut out Bag pattern pieces along outside printed lines. Match lines as indicated and tape together to make a full-size pattern.
2. You will be making two Bags (Bag A and Bag B) that will be sewn together for this reversible project. Begin with the outer Bag fabric for Bag A. Fold the Bag A fabric piece in half RST so long edges meet and measures 9" x 42". Press fold well. Fold in half again (in quarters) matching short edges together and meeting long edges to make a 9" x 21" rectangle; press well (Dia. A).

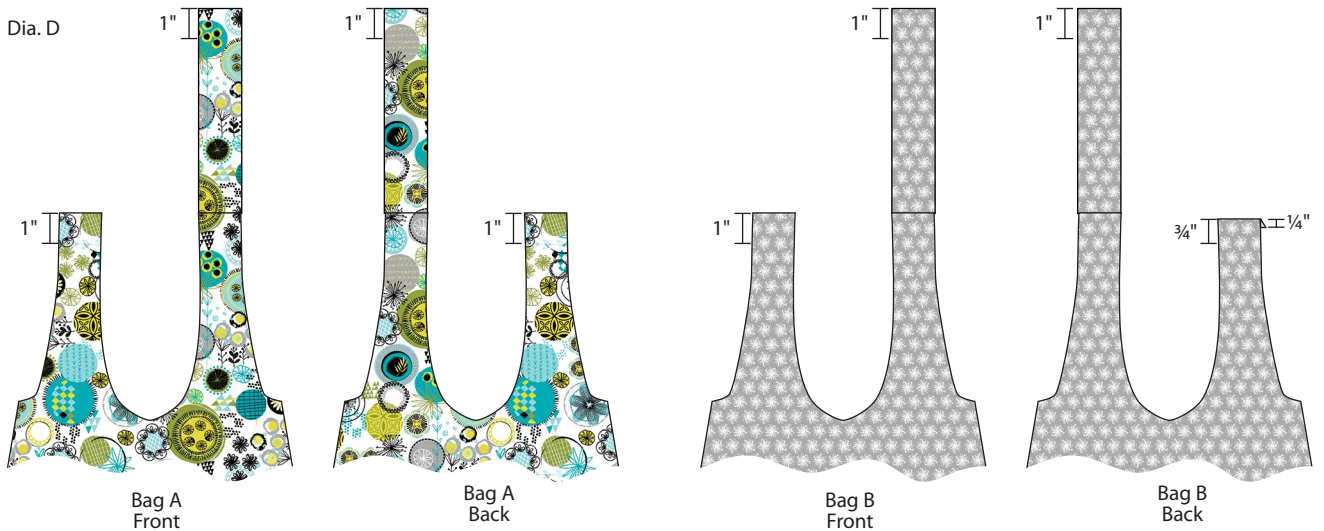


- Place center line of the Bag pattern on fabric along the 21" fold with the bottom of Bag A close to the selvage; pin in place. Cut around pattern to make a front and back. Then, unfold fabric and cut two 2 ¾" x 10 ½" pieces for Strap Extensions from the remaining fabric.
- Repeat Steps 2 and 3 for the Bag B fabric pieces.
- With long edges matching and **wrong** sides together, fold interfacing in half. **Note:** *The bumpy side is the wrong side of the interfacing.* Do not press interfacing! Cut two Bag Pattern pieces and two Strap Extensions (2 ¾" x 10 ½").
- Unfold and place Bag A pieces and Strap Extensions **wrong** side up on pressing surface. Layer interfacing pieces right side up (fusible side down) matching edges. **Note:** *If interfacing is larger than Bag pieces trim excess so that the fusible material won't gum up the pressing surface.* Fuse following manufacturer's instructions.
- Place the pattern right side up on **wrong** side of the Bag A and B pieces; mark at each circle for the darts. Flip pattern **wrong** side up and repeat on the opposite edge of each Bag. Set Bag B pieces aside.



Sewing

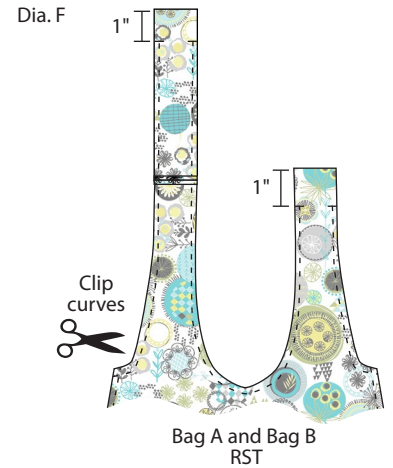
- To make darts in Bag A, fold dart RST so dots and cut edges meet. Pin and sew from cut edge to dot at dart point; press dart seams open (Dia. C). Repeat for remaining Bag A and Bag B darts.
- Pin and sew Strap Extensions to Strap ends on Bag A with RST as shown. Press seams open. Repeat for Bag B. Measure down 1" on the **wrong** side of the Straps and Strap Extensions and mark. On Bag B only, press the end of one Strap ¼" to the **wrong** side (Dia. D).



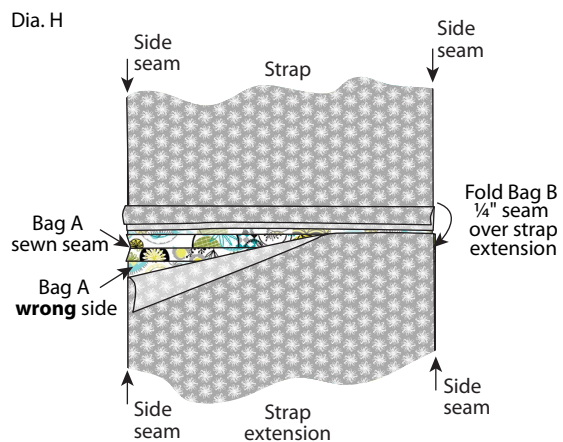
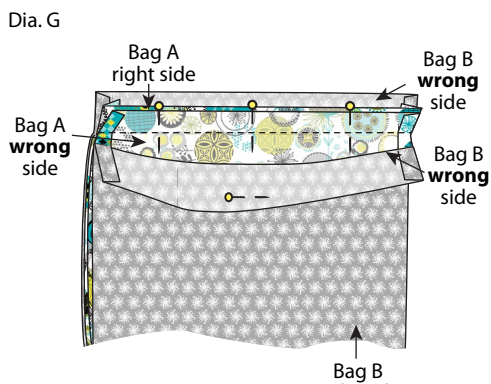
- Pin Bag A Front and Back RST with edges and darts matching. Sew Bag A lower body together as shown (Dia. E). Press side seams open. Repeat to make Bag B.



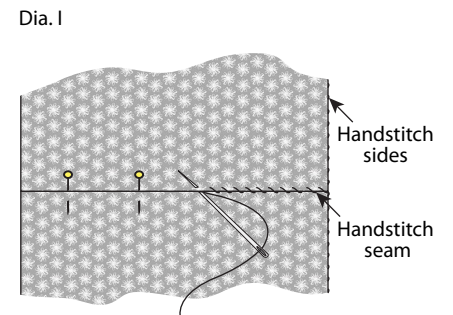
11. Turn Bag B right side out and place inside Bag A, RST. Match the Straps and Strap Extensions together and pin from 1" marks around curved edges. Begin sewing at 1" mark and sew around the Strap edges, stopping at the other mark. Clip curves (Dia. F).



12. Use the end of a wooden dowel rod to turn the Bag right side out. Start by pushing the bottom of the Bag through one short strap. **Note:** It will be a little snug. Continue to work it through using your hands. Pull out the Strap ends. Press top edge of the Bag and Straps flat.
13. Pin Bag A Strap Extension and Strap RST so cut edges and folded side seams meet. Sew with a 1/4" seam; press seam open (Dia. G). Lay flat end of Bag B Strap Extension over seam allowance. Then, lay folded edge of Strap over top of flat end and pin (Dia. H).



14. Handstitch pinned seam and folded edges of the side seams together (Dia. I)

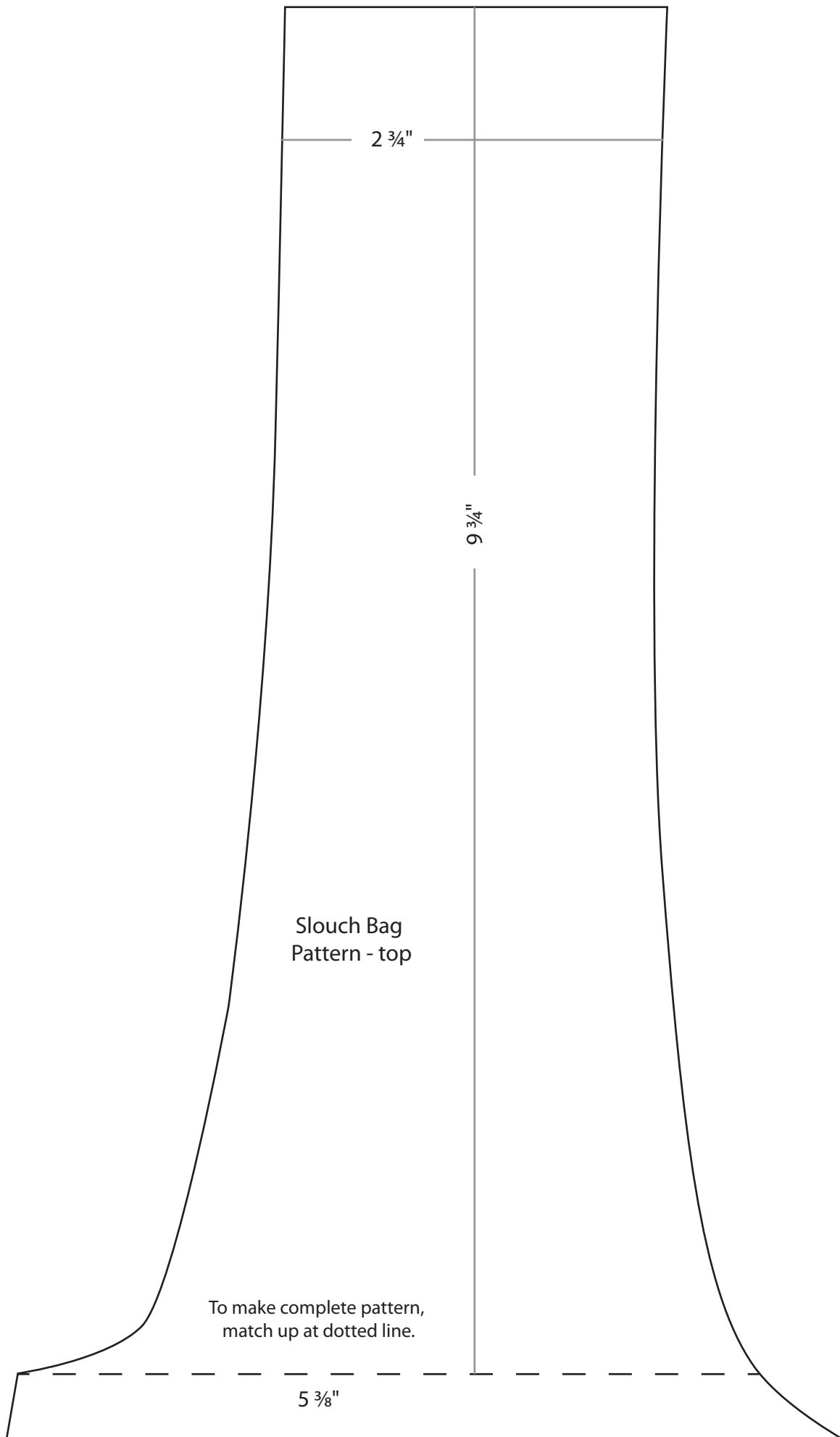


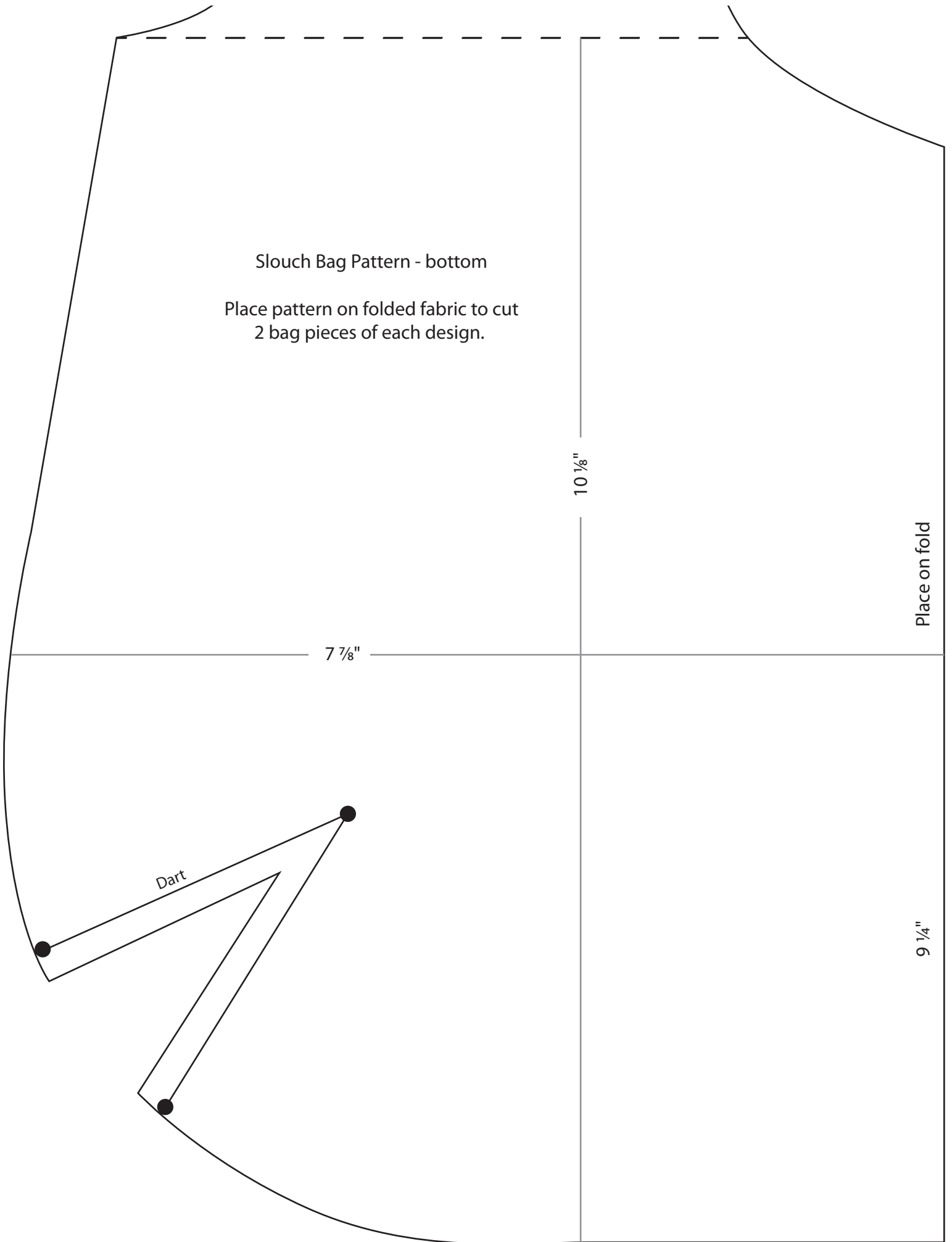
Finishing

15. Topstitch around the top edges of the Bag and Straps. Press bottom edges flat.

Finished Care Instructions

Machine wash in cold water, gentle cycle. Tumble dry low or hang to dry. Press if needed.





Slouch Bag Pattern - bottom

Place pattern on folded fabric to cut
2 bag pieces of each design.

10 1/8"

Place on fold

7 7/8"

9 1/4"

Dart