



Project Instructions

Ellie & Eliza

Stuffed Elephants

Skill Level 2:
Some experience necessary
Approx. Crafting Time:
3-5 hours to make both

Finished Size: 10" x 16 1/2" -Ellie
6" x 10 1/2" -Eliza

Supplies Needed

- 1 Land of Whimzie® Bundle
- Polyester fiberfill
- Coordinating embroidery floss
- Embroidery needle
- Removable marker
- Basic sewing supplies
- Safety pins
- Sewing machine
- Iron, pressing surface
- Tape



Ellie

Eliza

Instructions

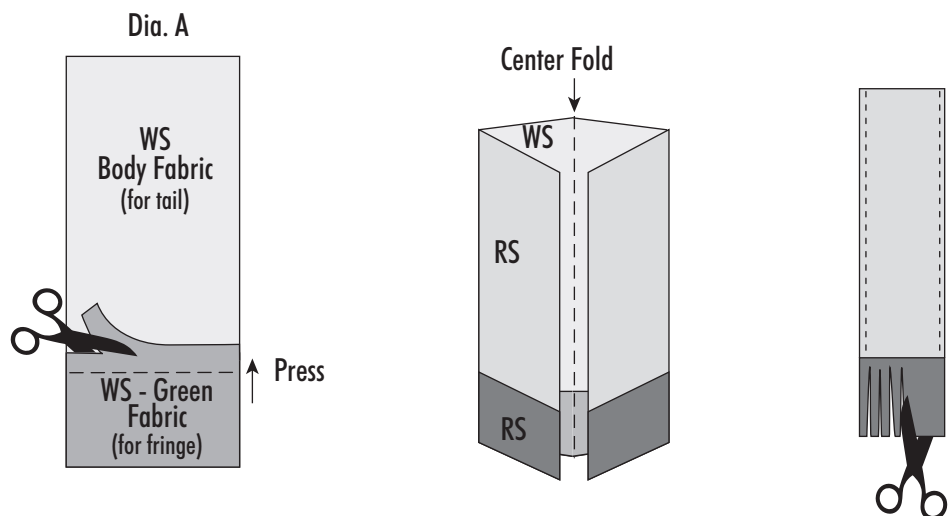
Read all instructions before beginning project. Do not prewash fabrics. Before cutting, press with a dry iron on cotton setting. Use a 1/4" seam allowance and sew fabrics with right sides together (RST) unless otherwise noted.

1. Cut out full-size templates A-G on solid lines. Overlap edges as directed and tape Templates A and B together for Eliza. Follow the instructions and Placement Diagrams on page 9 to overlap and tape Templates C-G together for Ellie.

2. Referring to the project photo, layer fabric quarters for Ellie's body right sides together. Place body pattern on top and pin through all layers. Cut out. Repeat with two different fabric quarters for Eliza's body. Layer fabric quarters for outer and inner ears together and use patterns to cut out ears for both elephants. (Models show Green for the inside and same body fabric on that side for the outside.) Cut a 2" x 3" piece from one body fabric for the tail and cut a 1" x 2" piece for the tail fringe from the Green fabric quarter. **Note:** One piece from the bundle will not be used. Remove pattern pieces and use the removable marker to transfer all markings for the body to the right sides of Ellie and Eliza bodies. Set aside the Eliza pieces until Step 11.

3. To make the tail, sew the Green fringe to one end and press seam toward the tail (Dia. A). Trim seam allowance to 1/8". Fold tail in half with wrong sides together and press fold well. Unfold tail then fold each long edge to the center fold. Press. Fold tail in half again to enclose raw edges. Topstitch along long edges. Make narrow clips in the tail fringe. Pin tail on one right side as shown on pattern; baste in place.

4. To make the ears, sew around edges leaving openings for turning. Clip corners and turn right side out. Press well and hand stitch openings closed.

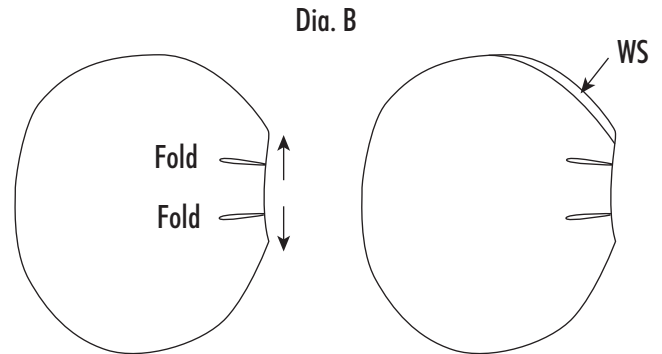


Care instructions: Spot clean when needed. Machine wash in cold water. Drip dry.

Project Instructions Continued

5. Using the ear pattern, mark the top fold dot on the front of the ear with the removable marker. On the wrong side of the ear, mark the pleat folds and lines.

6. Fold the ear on the dotted lines so that the pleat lines match. **Tip:** Stick a straight pin through the dots at the ends of each solid line to make the pleats. Sew along the marked line, securing the seam at both ends. Repeat for all pleats on both ears. Press seams away from each other; pin pleats in place. On front, fold top tip of ear to the mark and hand stitch in place along the edge of the ear (Dia. B).



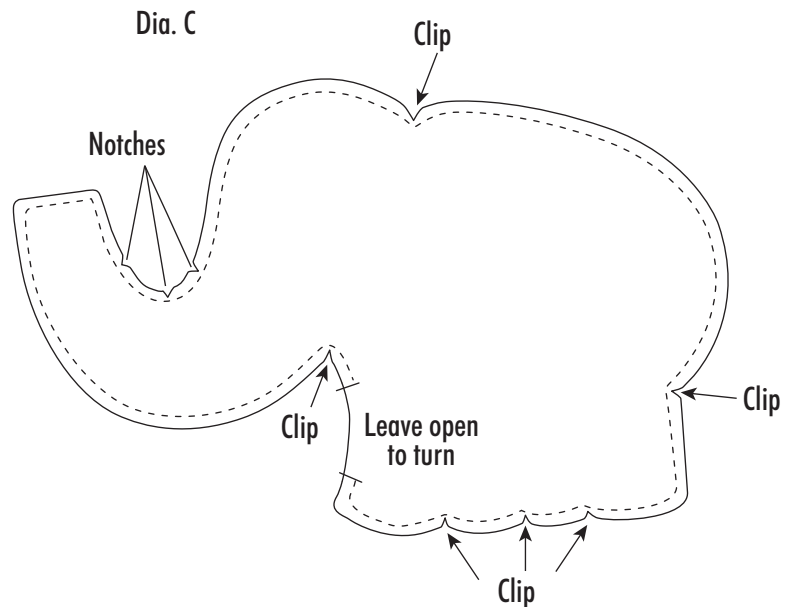
7. Pin ears where marked on Ellie body. Stitch pleated edges in place securely. Additionally, stitch along the top pleat folds to hold ears in place. Remove all placement marks from the elephant.

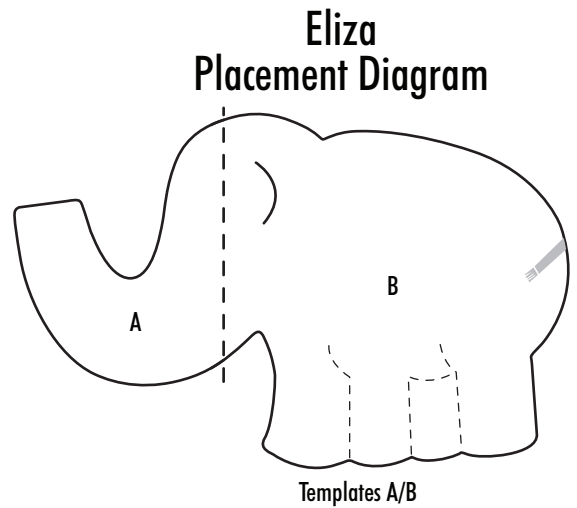
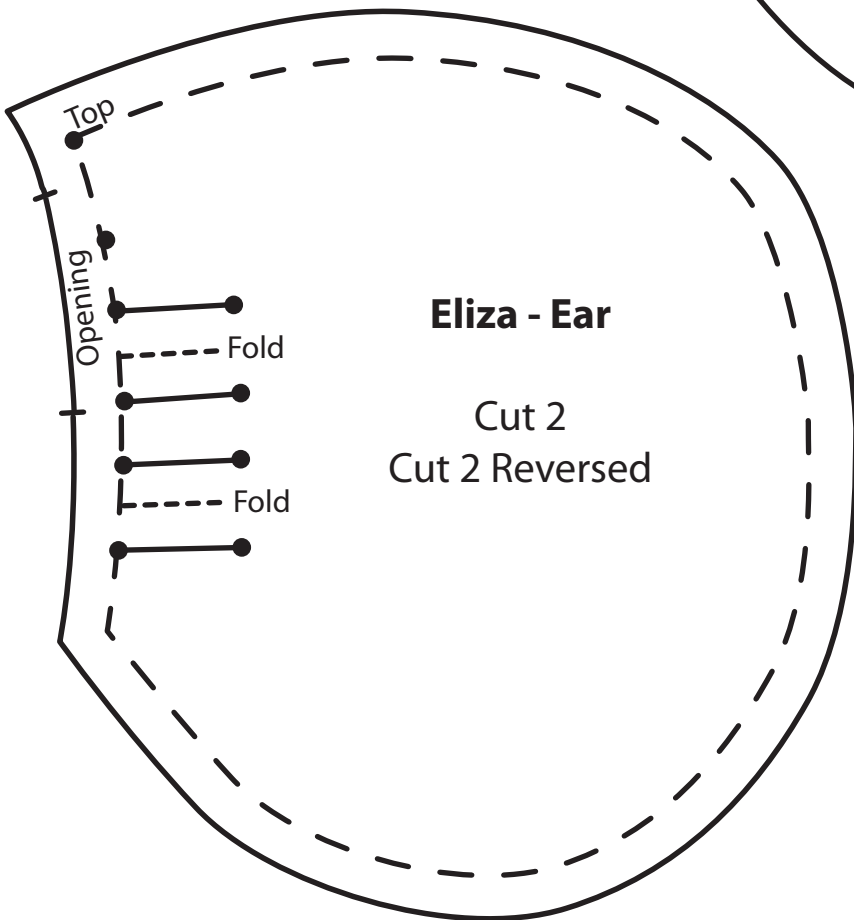
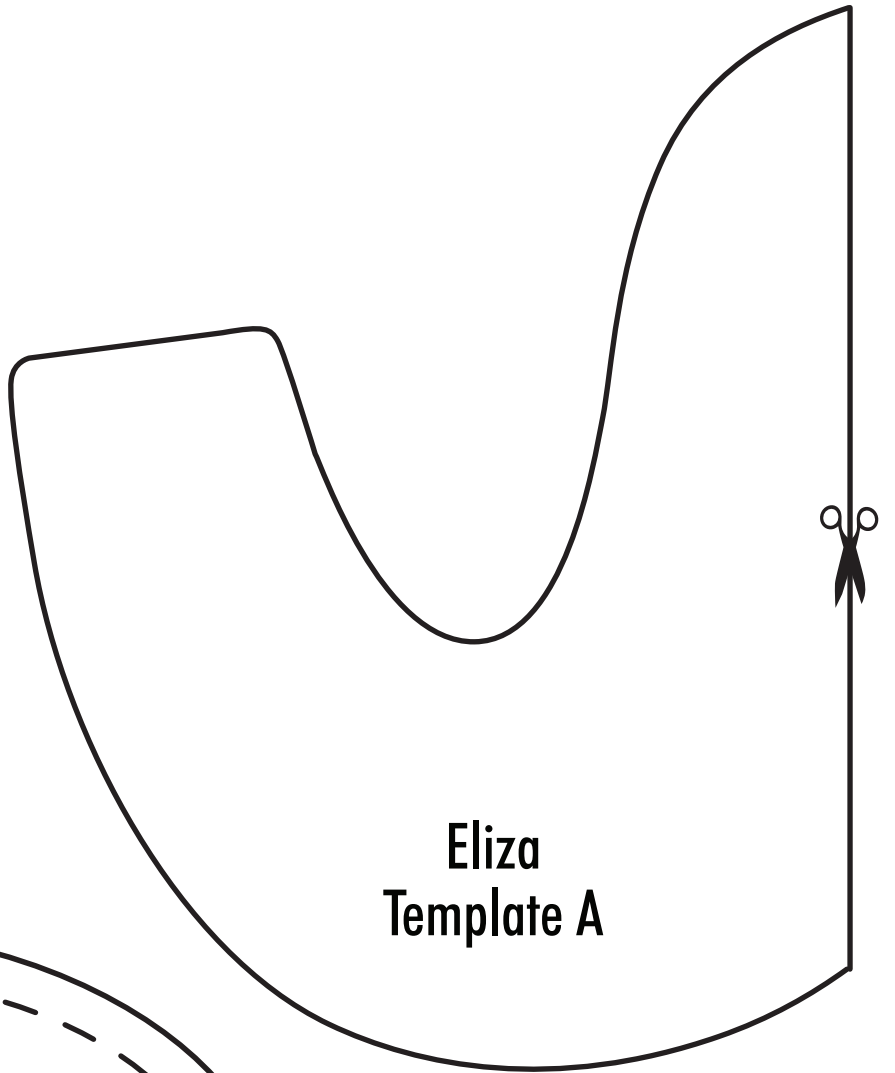
8. Layer front and back together; pin ears to body away from seam. Sew around outside edges leaving an opening for turning. Clip into corners and cut small notches along concave curves (Dia. C). **Tip:** Trim along seam allowances with pinking shears which makes notches automatically.

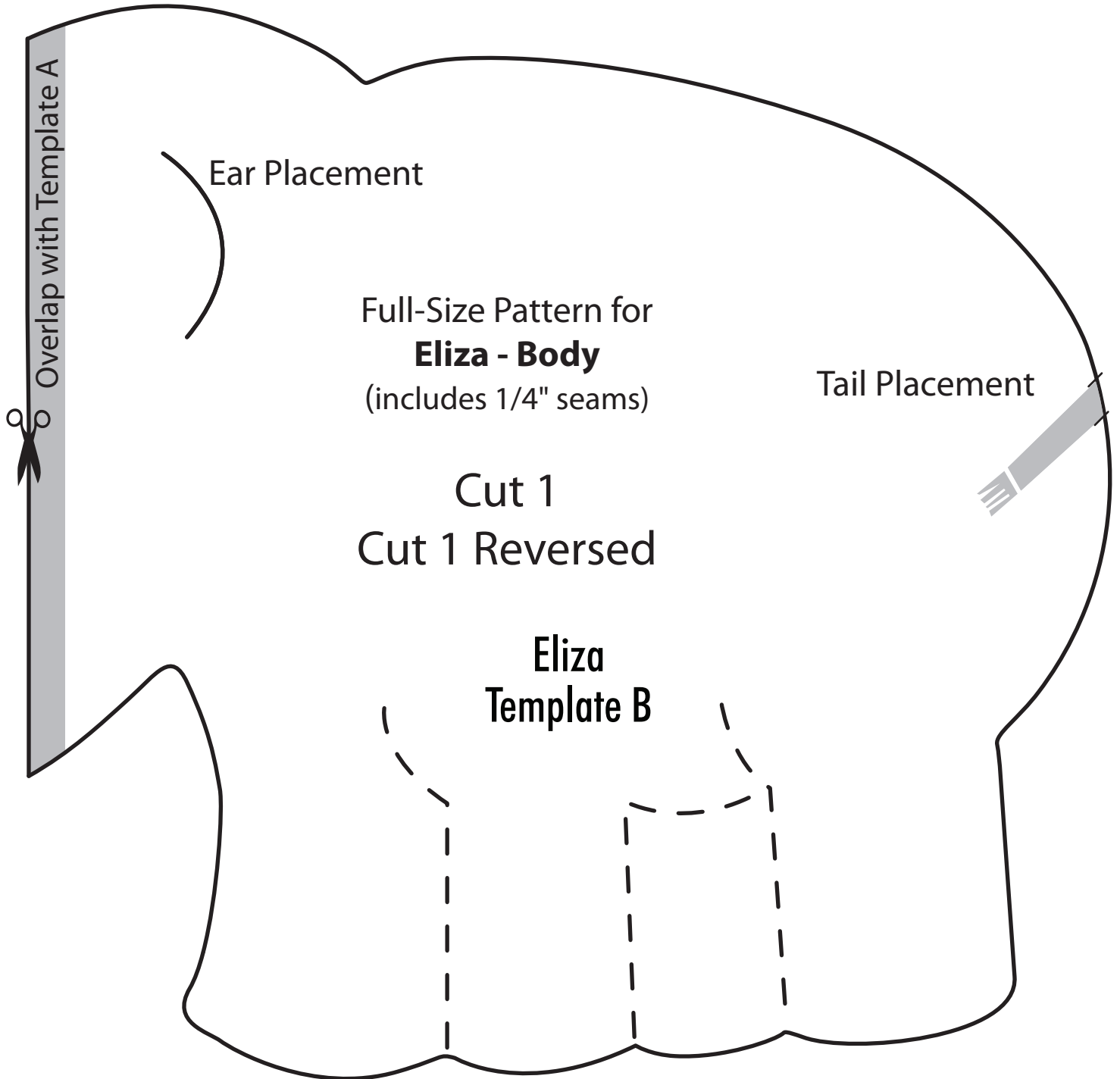
9. Turn right side out, remove pins and push seams out. Stuff to desired firmness with polyester fiberfill. Hand sew opening closed.

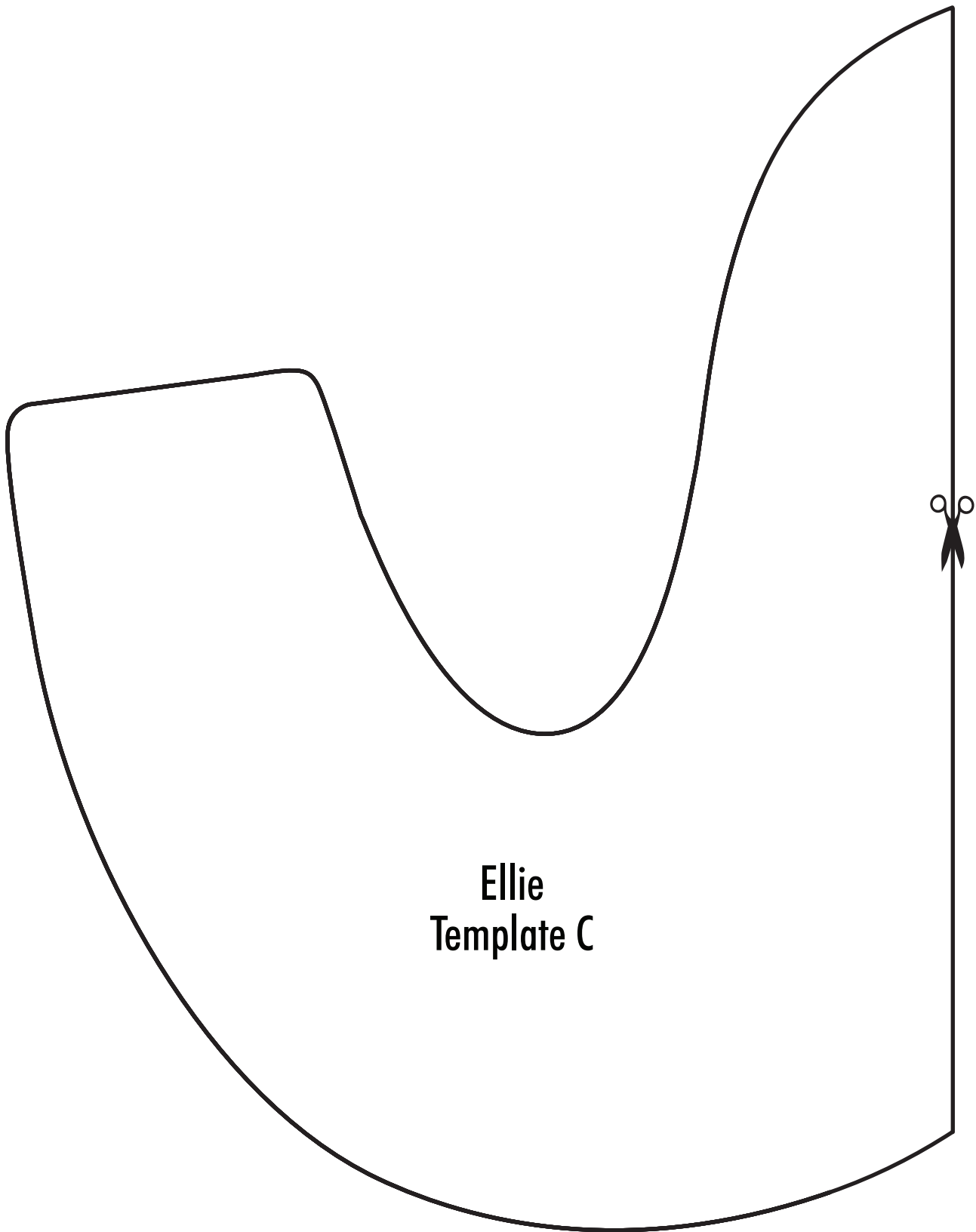
10. To embroider the legs, compress the layers together around the drawn lines. **Tip:** Poke pins from markings on one side straight through to the markings on the opposite side in several places. Use safety pins to pin through all layers next to the marked lines to secure the layers. Thread embroidery needle with all six strands of floss. Use a running stitch to embroider along all marked lines, using a stabbing method to be sure that the stitches are even along both marked sides. Pull layers together snugly as you stitch to make the leg contours. When all embroidery is complete remove safety pins.

11. Using the Eliza body and ear pieces, repeat Steps 2-9, except in Step 2 use a 1 3/4" x 3" strip for the tail and a 1 3/4" x 1" piece for the tail fringe.

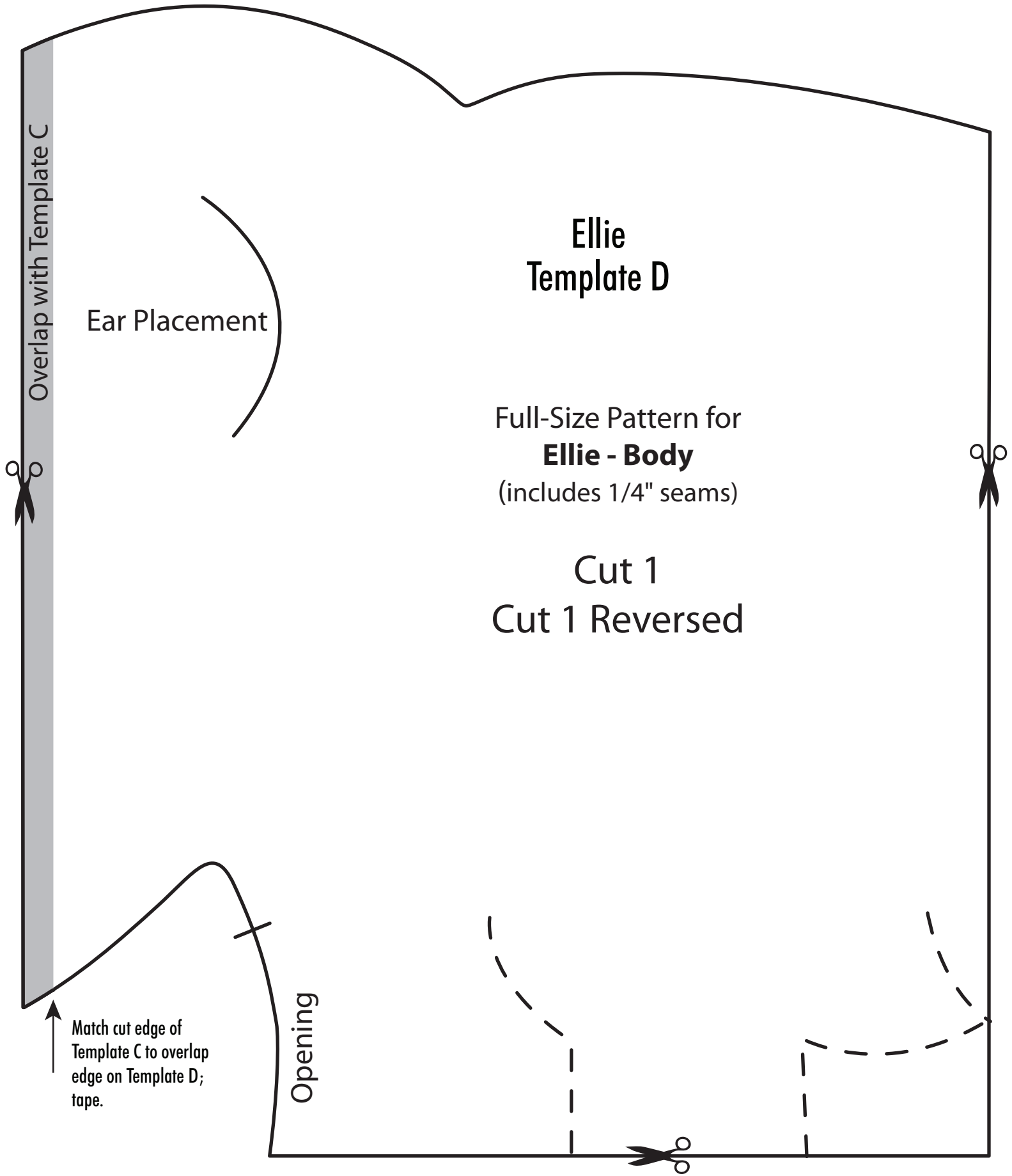


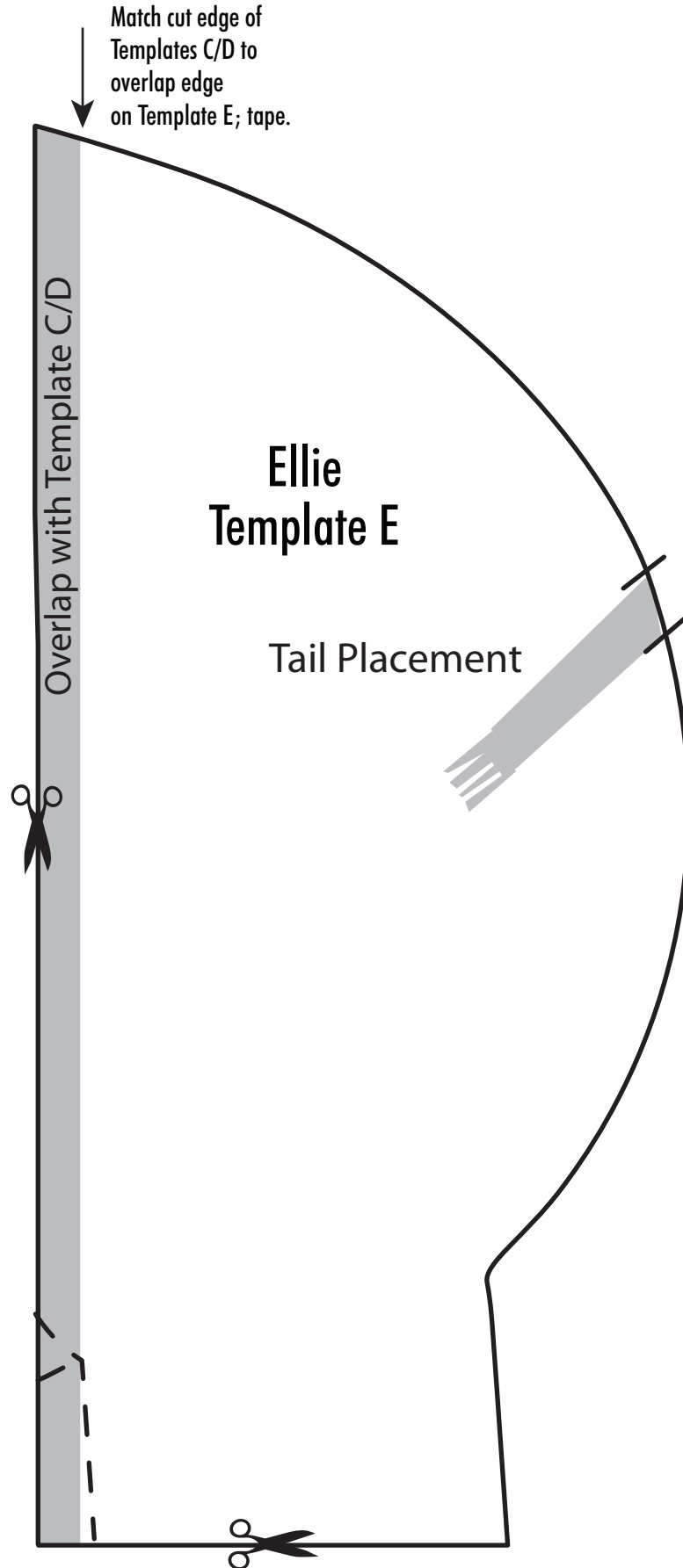




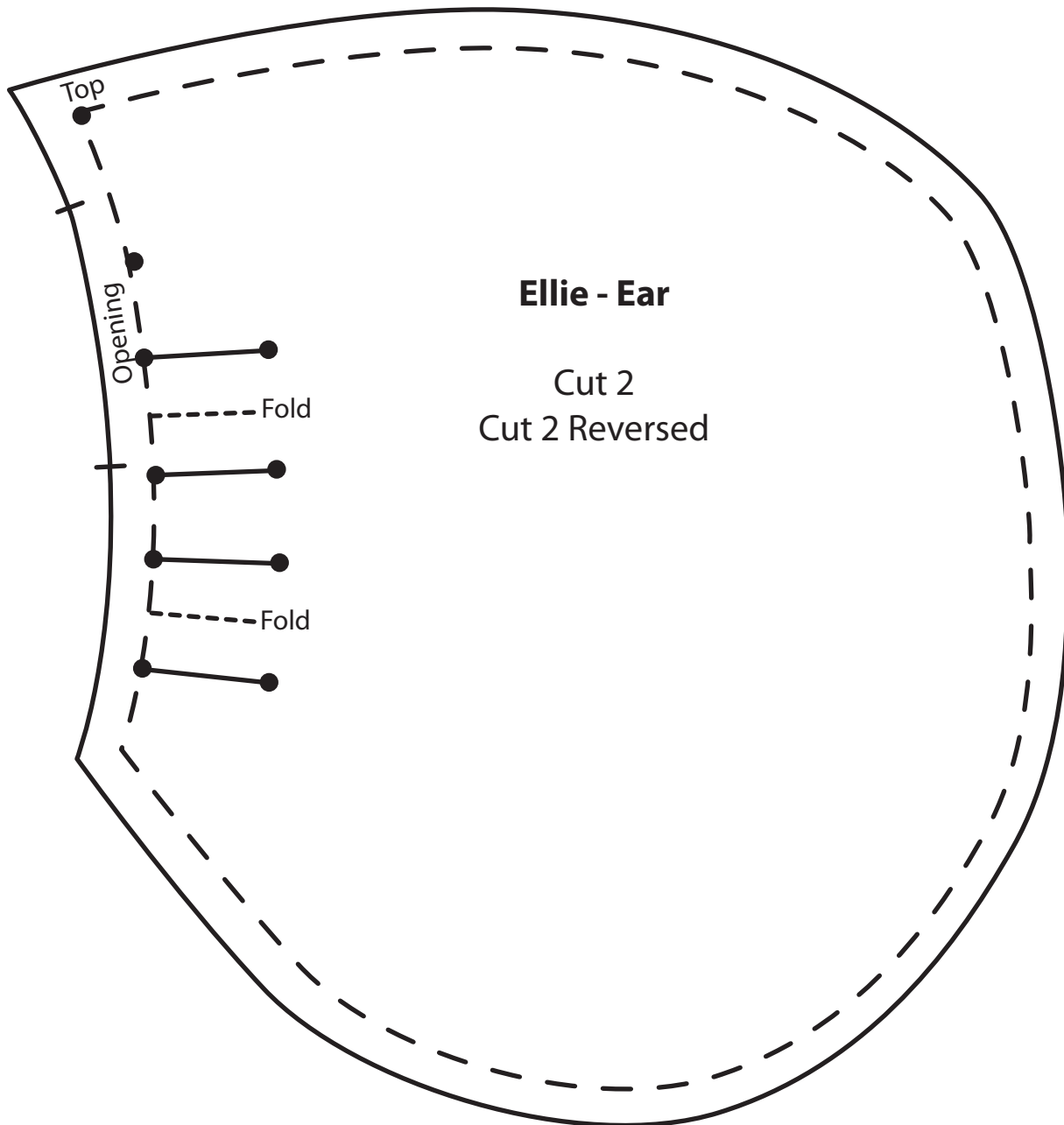
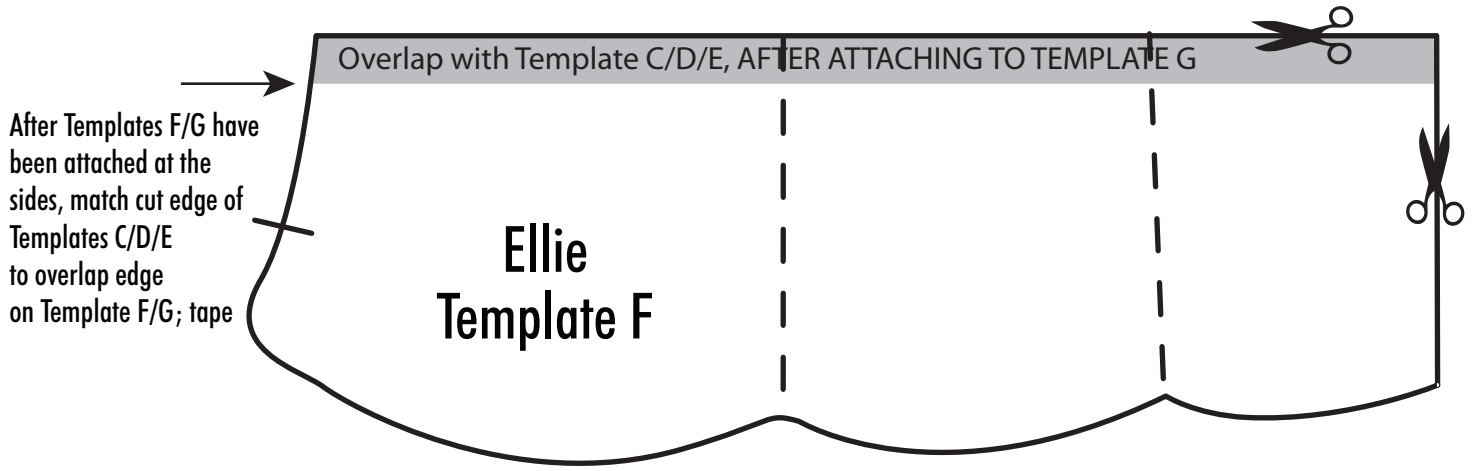


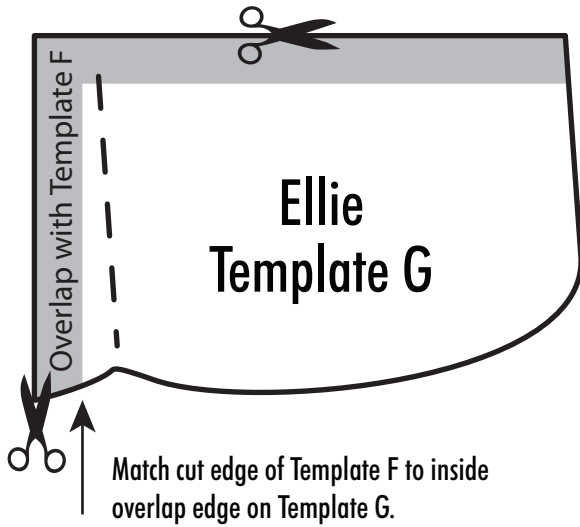
**Ellie
Template C**





Project Instructions Continued





Ellie Placement Diagrams

