



# Ali Gator Stuffie

Finished Size: 11" x 17"

## Supplies Needed

- ½ yd Land of Whimzie® Monkey in the Middle Flannel By-the-Yard: Blue Scribble Dot
- Red, white, and turquoise sewing threads
- 1 yd Yellow rickrack (large)
- ½ yd Red rickrack (medium)
- 1 pkg. Favorite Findings™ felt buttons (Bold assortment)
- White felt scrap (2" x 3")
- 1 bag Polyester fiberfill
- Removable fabric marker
- Basic sewing supplies
- Sewing machine
- Iron and pressing surface



## Instructions

*Read all instructions before beginning project. Do not prewash fabrics. Before cutting, press fabrics with a dry iron on cotton setting. Use a ⅜" seam allowance and sew with right sides together (RST) unless otherwise noted.*

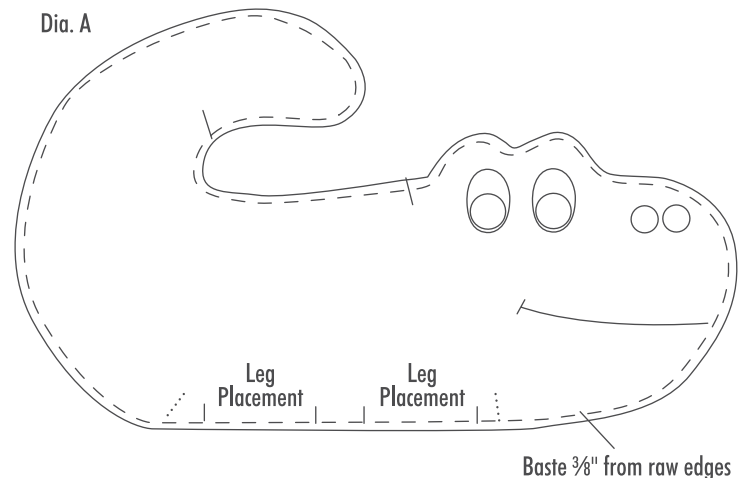
1. Trim the edges of the Body on page 4 along the dashed lines. Match to dashed lines and pattern lines on the Head (page 5) and Tail (page 3). Tape to make a full-size pattern; cut out on outside lines.

2. Fold fabric in half widthwise with right sides together. Pin pattern in place through both layers and cut out alligator around outside edges. Cut four 3 ¾" squares for legs.

3. Transfer markings for eyes, nose, mouth, scales, legs and opening for stuffing to the right side of the alligator front only. Trace two ovals for eyes on white felt and cut out; set aside until Step 9.

4. Center red rickrack on mouth line, folding under raw end. Pin and stitch in place using red thread.

5. Sew a basting line ⅜" from raw edges all around the alligator front with the markings to use for placement (Dia. A). **Note:** Stitches may be removed later if they show on the finished alligator.

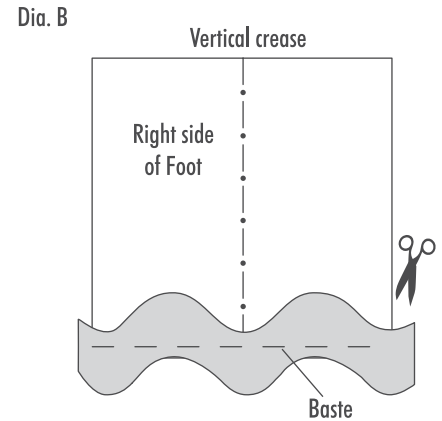


**Care instructions:** Spot clean with cool water if needed.

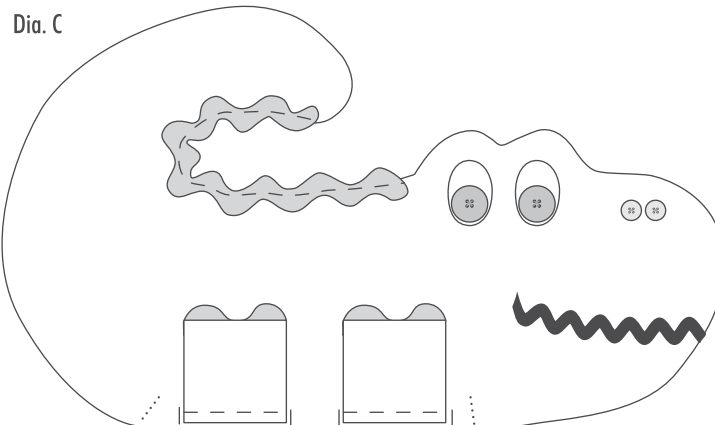
## Project Instructions Continued

6. Place large yellow rickrack on the tail and back along basting stitches between marks to add scales. Pin ends of rickrack below the basting line toward the raw edges; sew rickrack in place along the center of the trim.

7. Fold two 3 3/4" squares (legs) in half with right sides together and finger press a crease line firmly. Open flat with right side up and place yellow rickrack at bottom of the two squares so that two "toes" or bumps are pointing upward and a "valley" is centered on the crease (Dia. B). Baste in place along bottom edge. Trim rickrack even with sides of legs.



8. To finish legs, pin remaining two squares on top with right sides together and edges even; sew around the edges leaving the side opposite the rickrack open for turning. Turn right side out, stuff and baste open ends closed. Pin legs on alligator front between marks matching raw edges; sew in place securely (Dia. C).



9. Place ovals for eyes on alligator front at marks. Edge stitch in place with white thread. Hand sew medium size (7/8") felt buttons to white felt for pupils. Sew small felt buttons (5/8") at nostril marks.

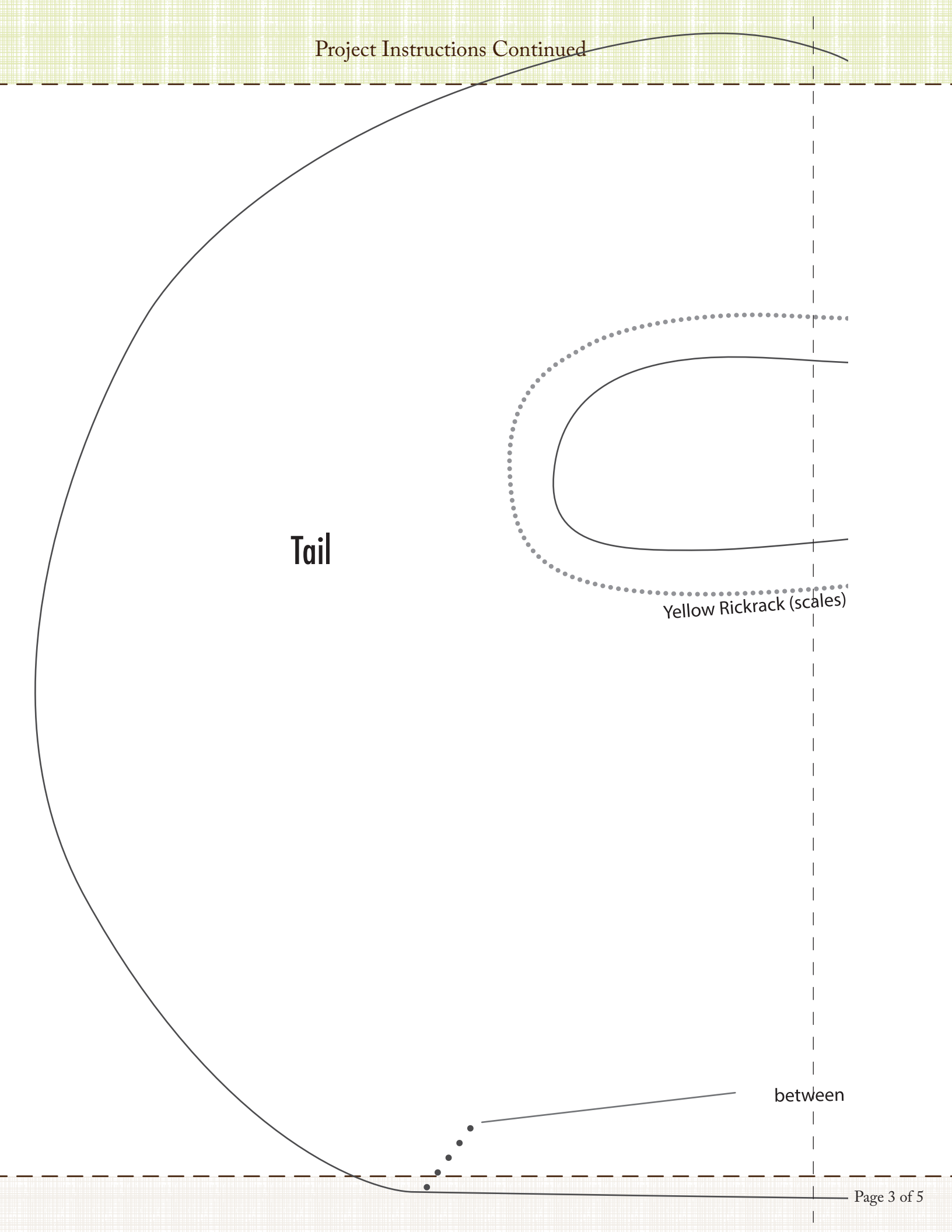
10. Place right sides of alligator together, matching edges and pinning well. Sew around the outside beginning at one dotted line and ending at the other dotted line to leave an opening in leg area for stuffing.

11. Clip curves and trim seam allowances where needed. Turn right side out and stuff to desired fullness. Pin open edges together and hand stitch opening closed.

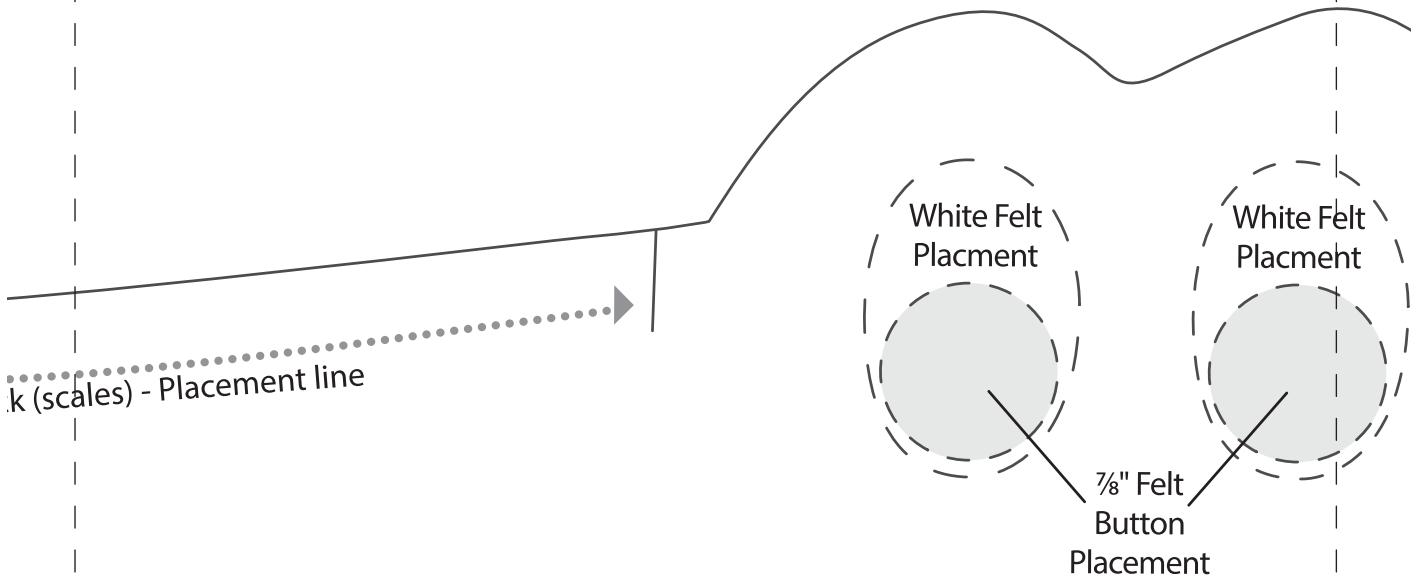
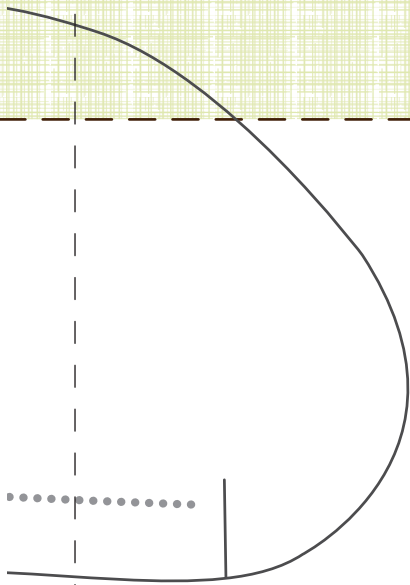
**Tail**

Yellow Rickrack (scales)

between



Project Instructions Continued



**Body**

Leave open  
between dotted lines for stuffing

