



Dots the Giraffe

Finished Project Size: 9" x 13"

Supplies Needed

- 1 18" x 21" Pre-cut
- 18" - 5/8" Yellow satin ribbon (Ribbon A)
- 20" - 3/8" Black grosgrain ribbon with white stitching (Ribbon B)
- 8" - 1/4" White and yellow satin ribbon (Ribbons C and D)
- 5" - 1/8" Black satin ribbon (Ribbon E)
- Coordinating thread (polyester recommended for strength)
- Polyester fiberfill
- Tape, pencil and removable marker
- Wooden chopstick or similar tool for turning
- Basic sewing supplies
- Sewing machine
- Iron

Instructions

Before you begin: Read all instructions. Use a 1/4" seam allowance and sew fabrics with right sides together unless otherwise noted. Cut out pattern pieces along printed edges.

CUTTING

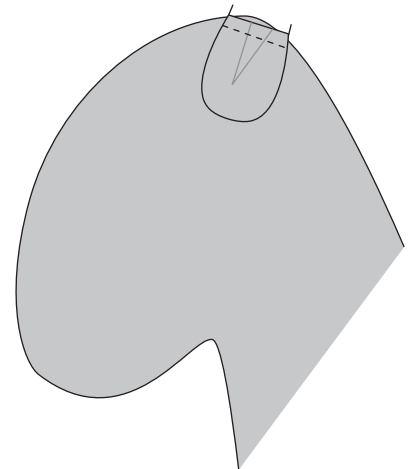
Fabric A: 2 - giraffe bodies (use giraffe pattern); 2 - ears (use ear pattern)

Ribbon A: 4 - 3" pieces (mane)

Ribbon B: 3 - 3" pieces (mane); 1 - 8" piece (tail)

1. Cut out top and bottom giraffe templates and tape together along dashed lines.
2. Fold Fabric A in half with right sides together and short edges matching. Pin giraffe and ear patterns to fabric and cut out. Transfer all markings to the right side of one giraffe body and one ear using removable marker.

Dia. A



Care instructions: Wash in cold water and tumble dry low.

SEWING

3. Ear: Sew curved edges together, leaving the straight edge open. Clip curves, turn ear right side out and press. Fold in half with dart marks showing; pin and stitch along dart line. Open ear flat and press dart to one side. Place the giraffe body with markings face up on a flat surface. Pin ear where indicated on the head with dart facing up; baste in place (Dia. A).

4. Mane: Fold each 3" ribbon piece in half with wrong sides together and short ends matching to make a loop and pin. Pin cut edges of ribbon where marked on neck, evenly spaced and alternating Ribbons A and B; baste ribbon ends in place (Dia. B).

5. Horns: Tie an overhand knot near both ends of Ribbon E. Trim ends to 1/4". Fold ribbon in half and place where designated on pattern; pin (Dia. B). Baste in place.

6. Tail: Stack then stitch the ends of the three 8" ribbons together. Make a 4" braid and tie the ribbon ends together in an overhand knot to secure. Trim loose ribbon ends to about 1 1/4". Pin to giraffe body at tail mark with loose ends pointing inward (Dia. C). Baste.

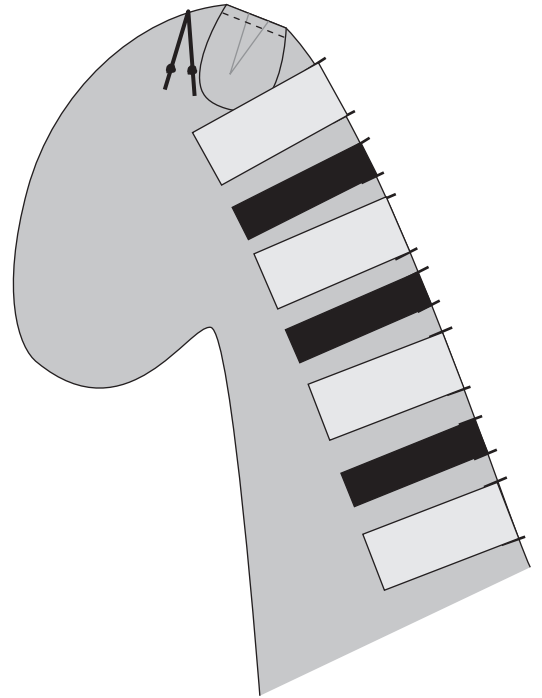
7. Body: Lay the other giraffe body on top with right sides together; pin. Starting at the top opening mark, sew around the giraffe body using a 1.5mm or 16-18 stitches/inch stitch length for strength; backstitch as you start sewing. End the seam at the other end of opening mark; backstitch. **Note:** Leave the designated area open for turning.

8. Reinforce the tail stitching. Clip curves for smoothness and corners to reduce bulk; turn giraffe right side out.

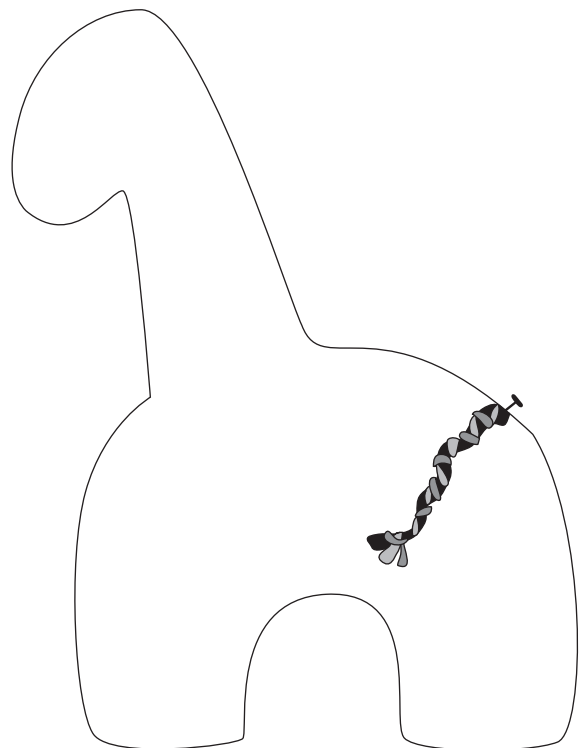
FINISHING

9. Stuff giraffe firmly with fiberfill. Hand stitch opening closed.

Dia. B

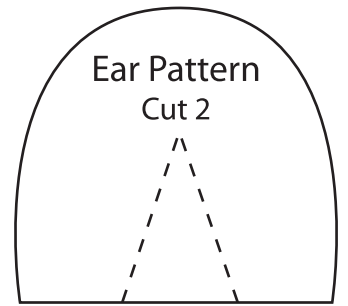
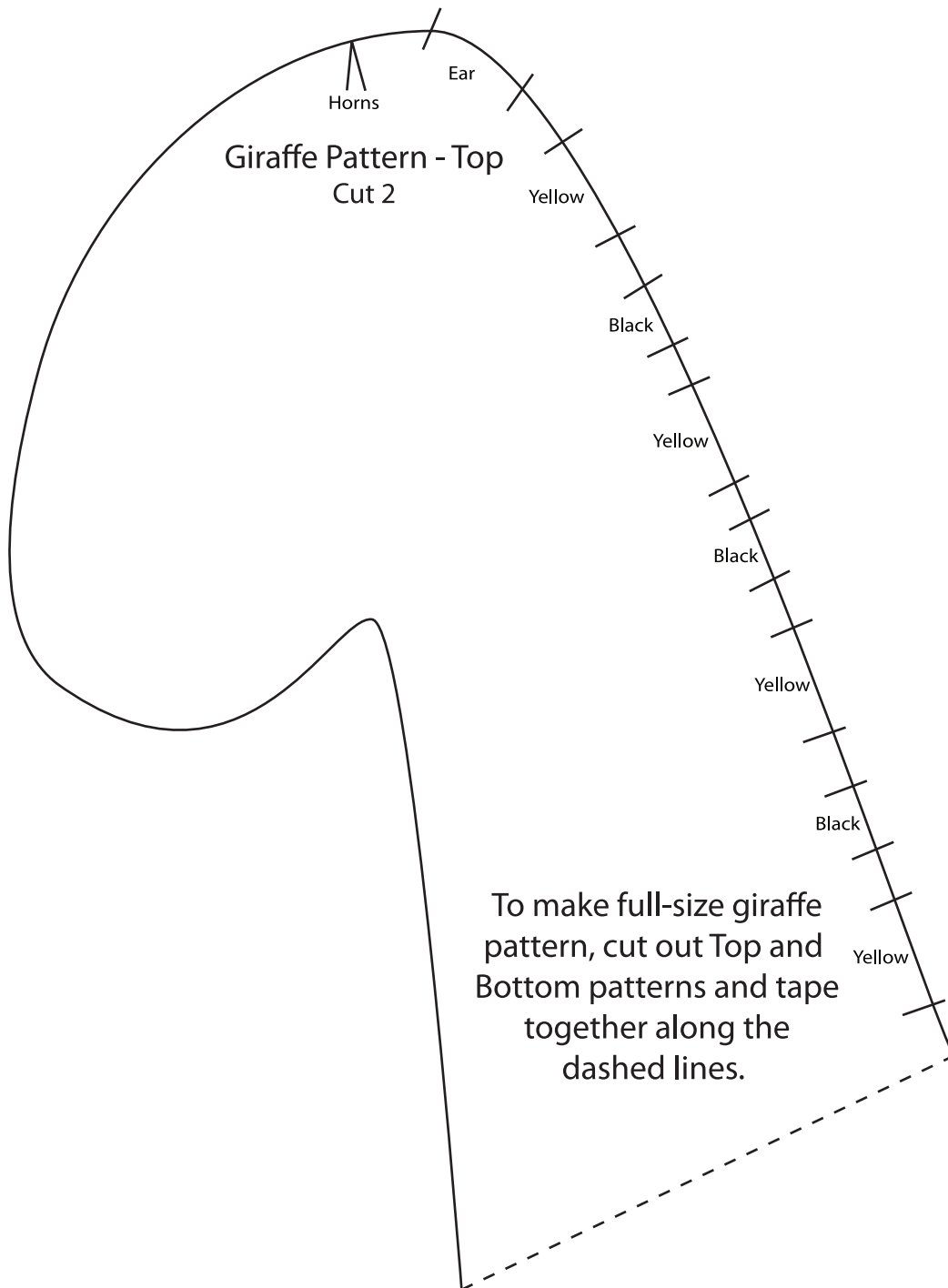


Dia. C





Giraffe Patterns Full Size



To make full-size giraffe pattern, cut out Top and Bottom patterns and tape together along the dashed lines.



