



Supplies Needed

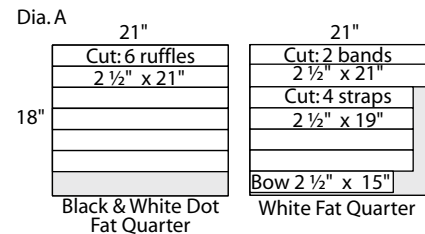
- 4 Fabric Palette® Fat Quarters (2 matching and 2 coordinating)
- Coordinating thread
- Rotary cutter, mat and acrylic ruler
- Removable marker
- Basic sewing supplies
- Sewing machine
- Iron and pressing surface
- Safety pin
- Wooden dowel or chopstick

Before you begin

Read all instructions before beginning project. Use 1/4" seam allowance and sew with right sides together (RST) unless otherwise noted. Zigzag or serge to finish seams.

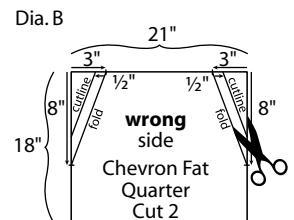
Cutting

- **Matching fat quarters:** square sides to 18" x 21" (dress)
- **Coordinating fat quarter:** 6 – 2 1/2" x 21" (ruffle)
- **Coordinating fat quarter:** 2 – 2 1/2" x 21" (band)
- **Coordinating fat quarter:** 4 – 2 1/2" x 19" (straps)
- **Coordinating fat quarter:** 1 – 2 1/2" x 15" (bow)

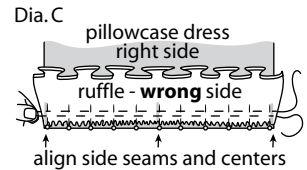


Assembly

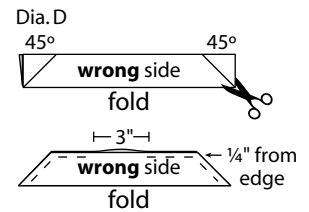
1. Place one dress piece (18" x 21") **wrong** side up. Make a mark on the top edge 3" from each side and 8" from the top on each side. Draw a line to connect the marks on each side. Measure out 1/2" and draw a cutting line (Dia. B).
2. Press the cut edges of the armhole to the **wrong** side 1/4" then again 1/4". Sew close to the folded edge to hem.
3. Press the top edge 1/4" to the **wrong** side. Then press it again 1" to the **wrong** side and sew along the pressed edge to create the casing.
4. Repeat Steps 1-3 for the other dress piece.



5. Pin the dress pieces RST and sew the side seams; press seams open. Find the center by folding the dress with the side seams aligned and mark the center fold at the bottom edges.
6. Pin and sew the short edges of the six ruffle pieces (2 1/2" x 21") RST to create a circle; press seams open. Press one long edge 1/4" to the **wrong** side then again 1/4" to the **wrong** side; sew close to pressed edge to hem.
7. Lay ruffle flat so there is a seam at each side and mark each side with a pin. Fold the ruffle in half so side seams meet and mark the center along both top edges. Sew 1/8" from the top edge with a long gathering stitch, stopping at each marked side seam and leaving a long thread tail. Repeat at 1/4" from the top edge.
8. Place the ruffle on the bottom edge of the dress RST with cut edges even, matching and pinning ruffle side seams and centers to the dress side seams and centers. Pull long threads to adjust gathers to fit; pin well and sew (Dia. C).
9. Pin and sew the short edges of the two band pieces (2 1/2" x 21") RST to create a circle; press seams open. Fold the cut edges **wrong** sides together; press. Open and press the cut edges 1/4" to the **wrong** side. Fold again so pressed edges meet and topstitch close to folded edge.



10. Pin the band to the right side of the dress directly above the ruffle seam with side seams matching and topstitch along both edges.
11. To create the bow (2 1/2" x 15"), fold RST so long edges meet and trim ends at a 45° angle (Dia. D). Sew 1/4" from all cut edges, leaving a 3" opening in the center for turning. Turn right side out and use a wooden dowel or chopstick to carefully push out points; press well. Topstitch close to all edges, sewing opening closed. Make a bow and hand stitch to the band.



12. Pin two short ends of two straps (2 1/2" x 19") RST; sew and press seams open. Fold RST so long edges meet and trim ends at a 45° angle (Dia. D). Repeat step 11 to sew two straps.
13. Attach a safety pin to one end of a strap and feed it through the front casing. Repeat with the second strap for the back casing.

Finishing

14. Gather top edges of dress along straps to fit child; adjust ends to be even and tie straps into shoulder bows.

Finished care instructions

Machine wash warm and hang to dry.