



"Owl" Hold Your Tooth!

Finished Size: 5" x 7 ½" x 3"

Supplies Needed

- 3 Land of Whimzie® Peek-a-Boo Forest Fabric Quarters:
 - Lt. Blue Letters
 - Allover Animals
 - Circle Geo
- Felt: white, blue, gold
- Coordinating thread
- Polyester fiberfill
- Fabric glue
- Scissors
- Basic sewing supplies
- Removable marker
- Sewing machine
- Iron, pressing surface

Instructions



Read directions before beginning. Do not prewash fabrics. Press fabrics before cutting. Sew with right sides together (RST) and use a ¼" seam allowance unless otherwise noted.

1. From Owl Body Pattern cut:

Blue ABCs (Owl Body Front Pattern)

Green Tossed Animals (Owl Body Back Pattern)

Fold each fat quarter in half with **wrong** sides together. Line up Owl Body pattern fold line on fabric fold line. Pin in place and cut out around pattern.

2. From Gray Circles cut:

1 - 4 ¼" x 4 ¼" (Pocket Pattern)

Fold remainder of fat quarter **wrong** sides together and cut one pair of Wings and one pair of Wings reversed.

3. From felt cut:

Gold: (1 from Feet and Beak Patterns)

White: (2 from Eyes and 2 Highlights Patterns)

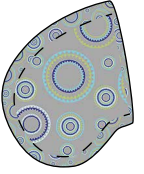
Blue: (2 from Pupil Pattern)

4. To add facial features to Owl Front, place it right side up on firm surface. Pierce the placement dots on the Owl pattern. Place pattern on right side of Owl Front, pin then mark the placement of Eyes, Beak and Pocket. Add the bottom opening marks to the Owl Front.

Project Instructions Continued

- Place facial features as marked. Glue securely and allow glue to dry.
- Lay out a right and left pair of Wings checking that **wrong** sides are together. Sew $\frac{1}{4}$ " from outside curved edges using a short stitch length (12-14 stitches/inch or 1.5-2.0mm) as shown in Diagram A.
- Fold the Pocket in half **diagonally** with **wrong** sides together and edges even; press. Center and place on Owl Body where indicated on pattern, lining up points of pocket with marks. Pin diagonal edges. Sew in place $\frac{1}{4}$ " from diagonal edges with a short stitch length back tacking at each end to secure.
- Pin Wings on Owl Front as shown in Diagram B. Use a $\frac{1}{8}$ " seam allowance and baste Wings to Owl Front.
- Pin Owl Back to Owl Front with RST and edges even. Begin sewing at one bottom opening mark, sew around outside edge and end at second mark, back tacking at each mark.

Dia. A

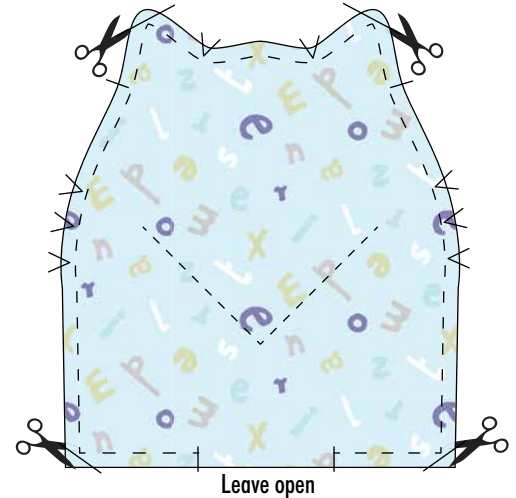


Dia. B



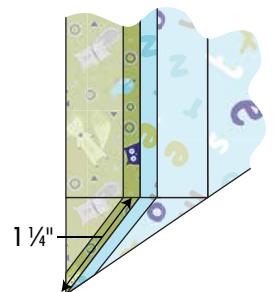
- Trim tops of ears and bottom corners of Owl Body. Clip seam allowances as shown in Diagram C. Finger press side and bottom seams open.

Dia. C



- To box the bottom corners of the Owl Body, flatten bottom corners then match bottom and side seams using a pin to align; pin in place. Draw a line $1\frac{1}{4}$ " from each point and sew along lines (Dia. D). Measure $\frac{1}{2}$ " from seam and trim off corner. Turn Owl right side out.

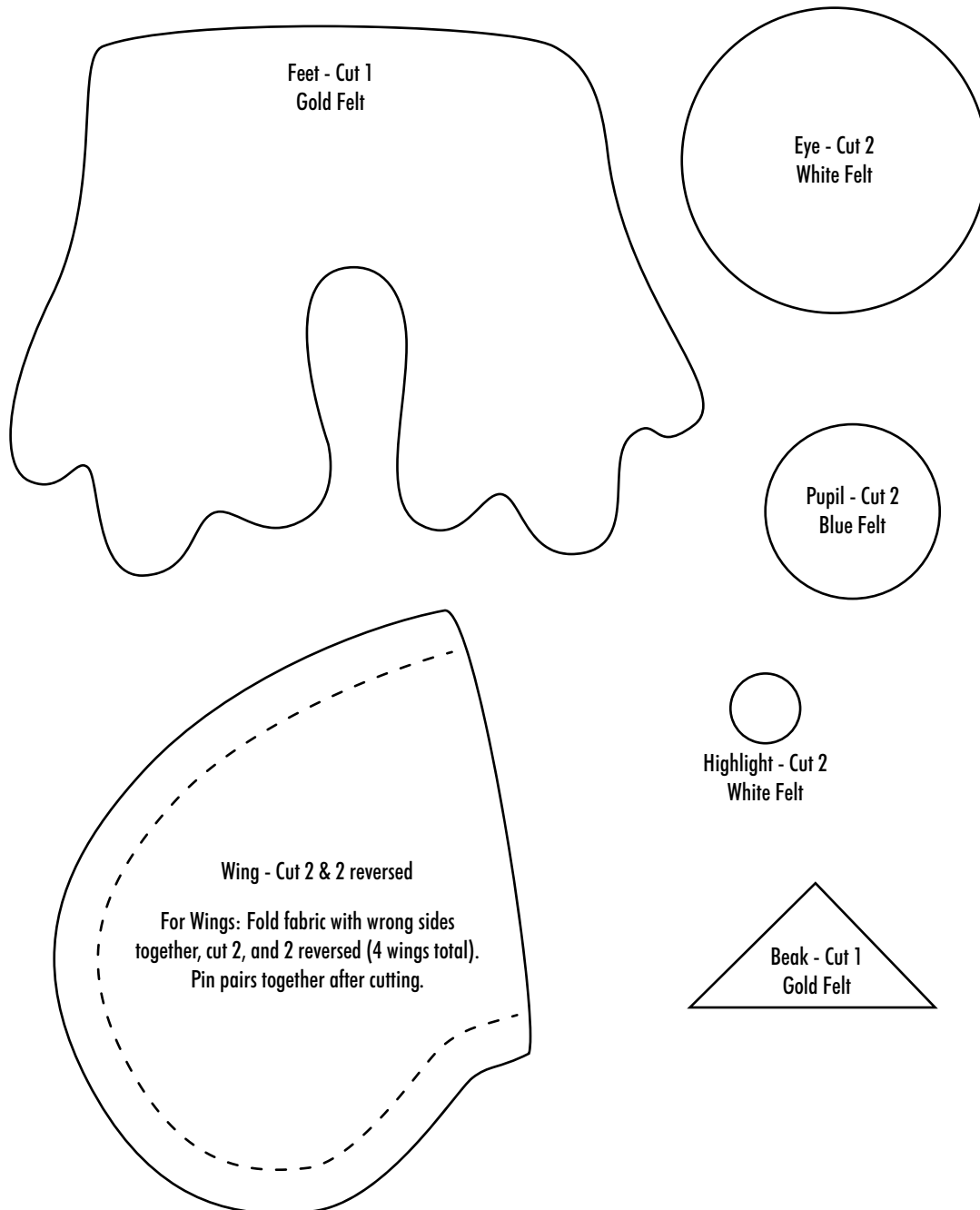
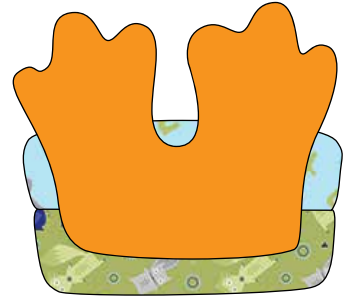
Dia. D



Project Instructions Continued

12. Insert stuffing through the bottom opening until Owl is firmly stuffed. Hand stitch opening closed.
13. Center and glue Feet to bottom of Owl as shown in Diagram E.
14. To make the Wings and Pocket edges appear feathery, clip along the loose seam allowances about $\frac{1}{4}$ " apart. **Note:** *Clip carefully to avoid cutting stitches or Owl Body.* Moisten edges with water and brush the clipped edges gently to fray.
15. Place your tooth in the pocket and wait for the Tooth Fairy to visit!

Dia. E



Project Instructions Continued

