

Hexagon Table Runner

Finished Size: 16" x 32" (40.64cm x 81.28cm)



Supplies Needed

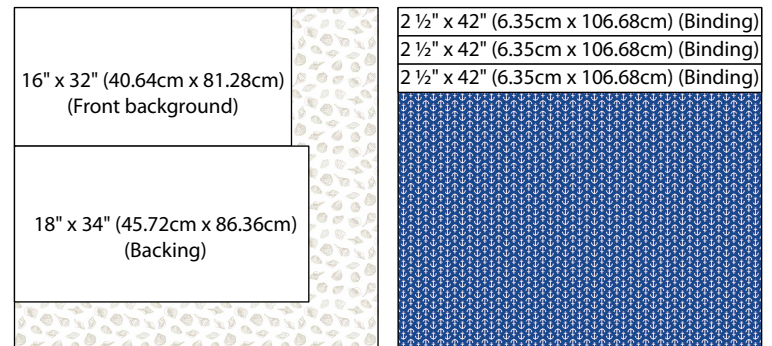
- 2 pkgs. Fabric Palette® Nautical One Meter (1m x 1.06m / 39" x 42");
Sea Shells (Front background; Backing)
Anchors (Binding)
- 1 pkg. Fabric Palette® Nautical Hexagons (24 pcs. - 5" x 4 1/3" / 12.70cm x 10.99cm)
- Cotton batting: 18" x 34" (45.72cm x 86.36cm)
- Lightweight fusible web: 1/2 yd (.457m)
- Coordinating thread
- Rotary cutter, mat and acrylic ruler
- Safety pins (size 1 for basting)
- Basic sewing supplies
- Sewing machine
- Walking foot (optional)
- Iron and pressing surface
- Masking tape
- Cardstock (template): 6" x 6" (15.24cm x 15.24cm)
- Removable marking tool (optional for quilting)

Before You Begin

Read all instructions before beginning project. Do not prewash fabrics. Before cutting, press fabrics with a dry iron on cotton setting. Use a 1/4" (.635cm) seam allowance and sew fabrics with right sides together (RST) unless otherwise noted. Press seams in direction of arrows. wof = width of fabric.

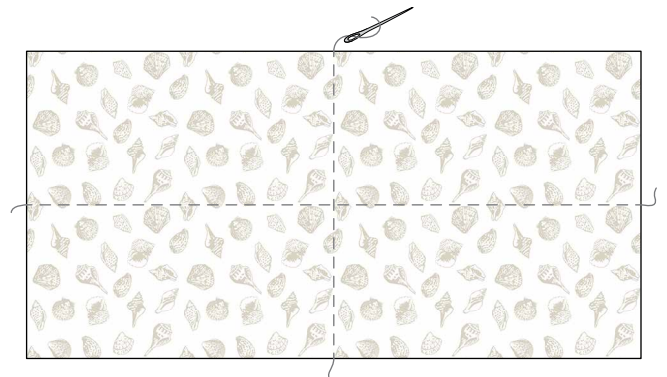
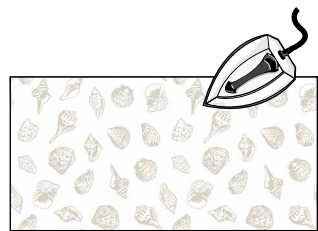
Cutting

- Sea Shells: 1 - 16" x 32" (40.64cm x 81.28cm) rectangle (Front background)
1 - 18" x 34" (45.72cm x 86.36cm) rectangle (Backing)
- Anchors: 3 - 2 1/2" x 42" (6.35cm x 106.68cm) strips (Binding)

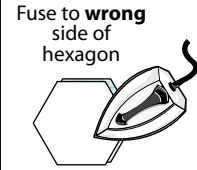
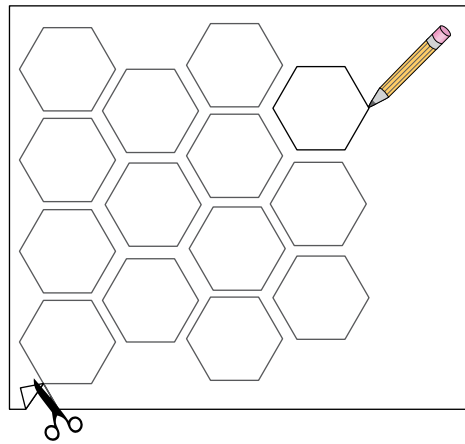


Sewing

1. Fold the Sea Shells rectangle (16" x 32" / 40.64cm x 81.28cm) into quarters and lightly press to create center fold lines. Open and hand baste along folds to create placement guides for layout of the Hexagon design.



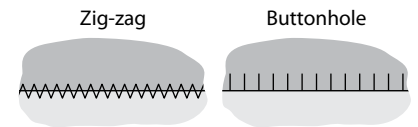
2. Choose 14 Hexagons for the table runner design. Place one fabric Hexagon on cardstock, trace the shape and cut out to make a template. Use template to trace 14 Hexagon shapes on the paper side of lightweight fusible web. Cut out each shape on the line. Follow manufacturer's directions to apply the fusible web to the **wrong** side of the 14 fabric Hexagons chosen for the Table Runner. **Note:** *Protect ironing surface from fusible web by placing a pressing cloth beneath the pieces being ironed.* Trim excess fusible if necessary. Remove paper backing from the Hexagon shapes.



3. Arrange the Hexagon shapes on the background approximately ½" (1.27cm) apart as shown. Use the basting stitches as guidelines to center the rows and columns. Once you are satisfied with placement, fuse to the background following manufacturer's directions. **Tip:** *To more easily remove the basting stitches, fuse just the edges of the Hexagons that cover the stitches, then fuse fully after removing thread.* Let cool and remove basting stitches.

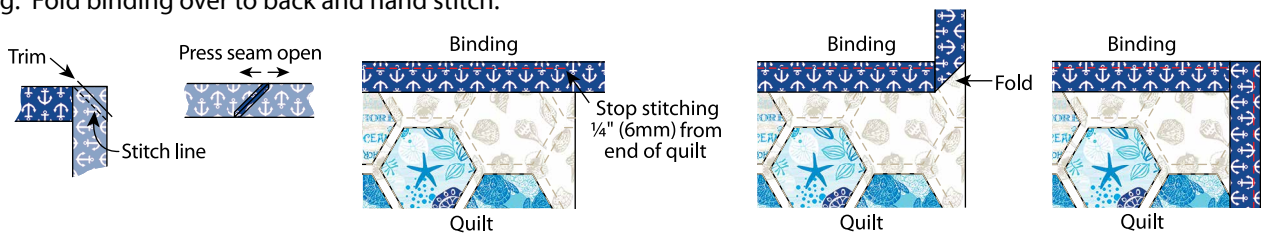


4. Stitch around each Hexagon using a narrow zigzag or small buttonhole stitch to secure the edges to the background.



Finishing

5. Press finished Table Runner Front and Sea Shells Backing fabric (18" x 34" / 45.72cm x 86.36cm). Tape the Backing, **wrong** side up to a firm surface. Layer batting and Table Runner Front (right side up). Baste the layers together with safety pins. Quilt as desired or use the suggested design shown to quilt the layers together. Use a removable marking tool to trace around the cardstock template to add stitched hexagons to the remaining background area. **Note:** *Quilting with a walking foot is helpful when sewing through layers of fabric.* Trim Backing and batting even with front making sure corners are square.
6. To make the Binding, remove selvages and sew the short ends of the Anchors Strips (2 ½" x 42" / 6.35cm x 106.68cm) RST end to end at a 45° angle to make one continuous strip; press seams open. Press one short end ¼" (.635cm) to the **wrong** side. Fold in half lengthwise with **wrong** sides together; press. Leaving a 2" (5.08cm) tail on the folded end, place cut edges of folded Binding even with the edge of the Table Runner Front and sew, mitering the corners. Overlap ends, trim any excess and finish sewing the Binding. Fold binding over to back and hand stitch.



Finished Care Instructions

Machine wash in cold water; gentle cycle. Lay flat to dry or tumble dry low.