



How to make your Gracie Bag

Finished size: 7 1/2" x 8 1/2" x 1 1/2"

Supplies Needed:

- 1 pkg Little Dress Boutique™ Gracie 1 Yard
- 2 Little Dress Boutique™ Gracie Fabric Quarters:
 - Turquoise Multi Stripe
 - Aqua Chevron
- Lightweight fusible interfacing: 1/4 yd
- Removable marker
- Rotary cutter, acrylic ruler & mat
- Basic sewing supplies
- Sewing machine
- Iron & pressing surface

Directions

Read all instructions before beginning project. Do not pre-wash fabrics. Use a 1/4" seam allowance and sew fabrics with right sides together (**RST**) unless otherwise noted. Backstitch at the beginning and end of each seam to secure stitching. Before cutting, press fabrics with a dry iron on cotton setting. Label pieces as they are cut.

Cutting:

Multi Large Dot: 2 – 8 1/2" x 10 1/2" (bag lining)
 2 – 8 1/2" x 6 1/2" (pockets)
 1 – 3" x 26 1/2" (strap)

Turquoise Multi Stripe: 2 – 8 1/2" x 8 1/2" (pocket linings)

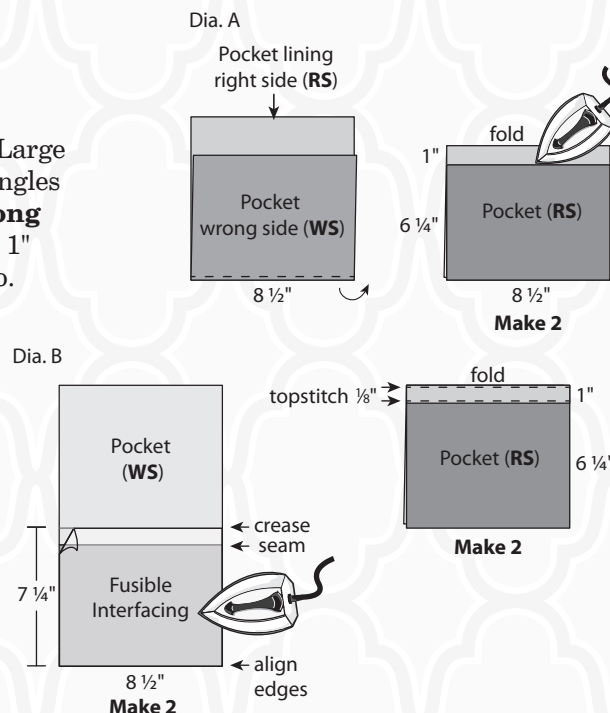
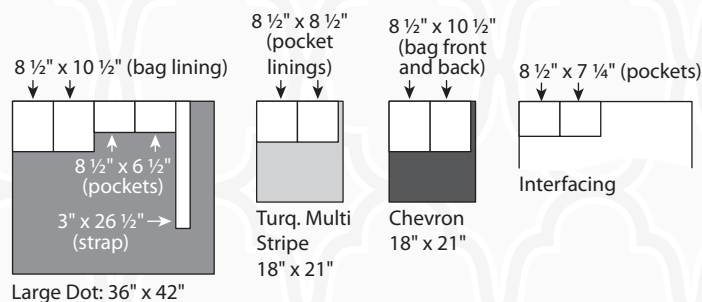
Aqua Chevron: 2 – 8 1/2" x 10 1/2" (bag front and back)

Interfacing: 2 – 8 1/2" x 7 1/4" (pockets)

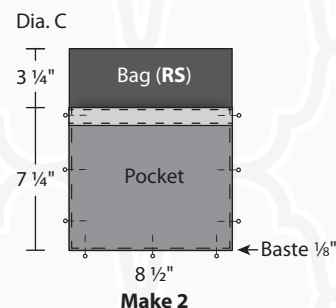
Sewing:

1. **Pockets:** Sew a Turquoise Multi Stripe pocket lining to a Multi Large Dot pocket along an 8 1/2" edge with the stripes running at right angles to the seam. Press seam toward the lining. Fold pocket with **wrong** sides together, matching short ends and bottom corners to form a 1" wide band at the folded edge; press fold firmly (Dia. A). Make two.

2. Open and place pockets **wrong** sides up on pressing surface. With corners and 8 1/2" edges aligned, place interfacing with adhesive side down on seamed end of pocket unit. Fuse in place according to manufacturer's instructions. Fold in half **wrong** sides together matching corners and edges; press well. Topstitch 1/8" from each long edge of band. Repeat for the second pocket (Dia. B).



3. **Bag:** Place pockets on Aqua Chevron bag front and back. Align bottom edges and side of pocket with each bag piece. Pin in place then baste sides and bottom edges of pocket to bag pieces (Dia. C).

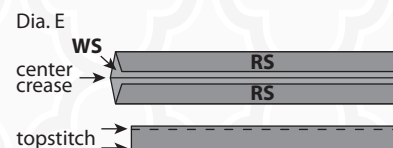


4. Place bag front and back **RST**; sew sides and bottom seams leaving the top edges open. **Note:** Match ends of band pieces along the side seams. Leave bag as sewn and remove basting stitches.

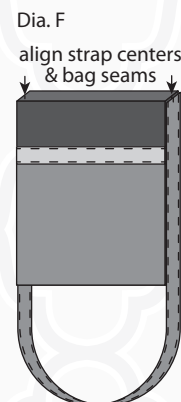
5. Box the bottom corners by matching the side seam to the bottom seam; pin. Measure 1" from the tip and draw a line from edge to edge; sew on the line (Dia. D). Repeat for the second corner then trim seams to 1/4". Turn bag right side out.



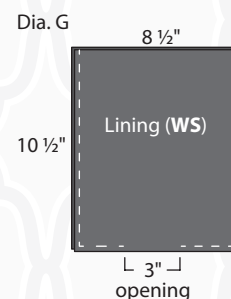
6. Strap: Fold Multi Large Dot strap in half lengthwise with **wrong** sides together. Press well to form a center crease. Open strap out flat with **wrong** side up; fold each long edge to the center crease and press well. Fold in half to make a 3/4" x 26 1/2" strap and stitch close to the folded edges on each side (Dia. E).



7. Fold short ends of the strap in half to find the centers; mark. On right side of bag pin the ends of the strap to the top edges of bag matching the center marks to the side seams (Dia. F). Sew securely in place. Turn bag right side out.



8. **Lining:** Place Multi Large Dot linings **RST** and sew sides and bottom seams, leaving a 3" opening at the bottom seam for turning (Dia. G). Press seams open. Box corners as in Step 5; leave lining as sewn.



9. Place bag inside lining **RST**. Align side seams and match top edges. Sew the top edges together with a 1/4" seam.

Finishing:

10. Turn bag right side out through opening in lining. Stitch opening closed. Push lining inside bag so that the seam is at top edge of bag; press well then topstitch 1/4" from the top edge of the bag.

Finished Care Instructions:

Wash in cool water; hang or lay flat to dry. Press to remove wrinkles, if needed.