

# Gone Fishing Beach Bag

Finished Size: 15" x 20" (38.1cm x 50.8cm)



## Supplies Needed

### Note: Makes one Bag

- 2 pkgs. Fabric Palette<sup>®</sup> Southport One Meter (1m x 1.06m / 39" x 42");  
*Ocean Floor* (Head and Lining)  
*Waves* (Body)
- 5/8" (1.587cm) Grosgrain ribbon: 2 1/4 yds. (2.057m)
- 2 Buttons: 1 1/2" (3.81cm)
- Coordinating thread
- Removable marking tool
- Safety pin
- Basic sewing supplies
- Sewing machine
- Iron and pressing surface

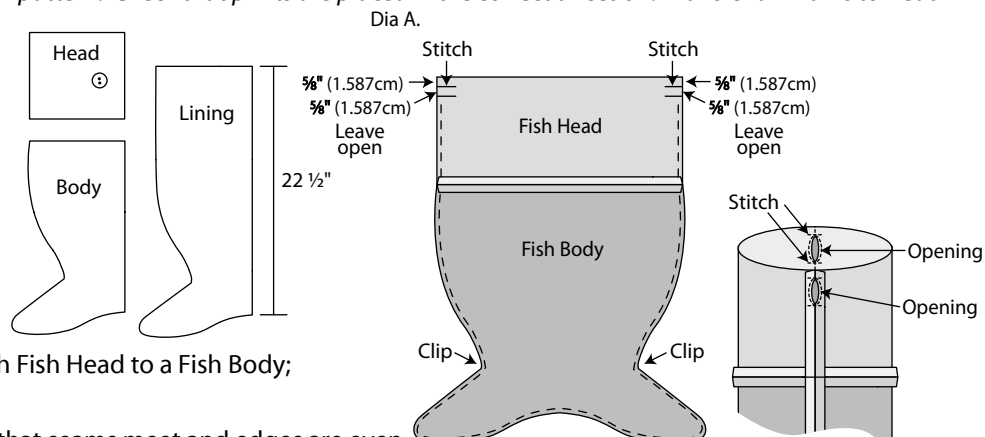
## Before You Begin

Read all instructions before beginning project. Press fabrics on cotton setting. Use a 1/2" (1.27cm) seam allowance and sew fabrics with right sides together (RST) unless otherwise noted. Backstitch at beginning and end of seams.

## Cutting

**Note:** Cut out pattern pieces on pages 3-10 along outside edges and tape together to make the Body, Head and Lining patterns. Place pattern pieces along fold of fabric as indicated on pattern. Check that prints are placed in the correct direction. Transfer all marks to Head fabric pieces after cutting.

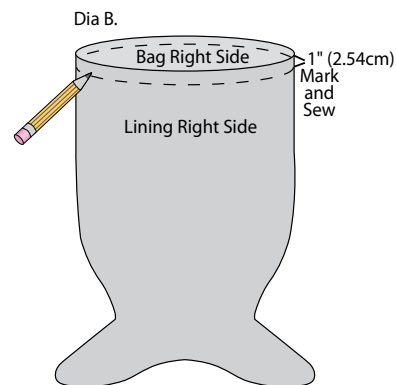
- Waves: 2 - Body (pattern)  
 Ocean Floor: 2 - Lining (pattern)  
 2 - Head (pattern)  
 Ribbon: 2 - 40" (101.6cm) pieces



## Sewing

1. To make a front and back, pin and sew each Fish Head to a Fish Body; press seams open.
2. Pin the sewn front and back pieces RST so that seams meet and edges are even.
3. Refer to Diagram A to sew edges together, leaving an opening where indicated on each side. Press side seams open. Stitch around openings to secure; clip curves.

4. Pin the Lining pieces RST with edges even. Sew together, leaving a 4" (10.16cm) opening on one side for turning; clip curves. Press side seams open.
5. Place the Bag inside the Lining RST so that seams meet and edges are even; sew around the top edge. Turn Bag right side out through opening. Sew opening closed. Push Lining into Bag.
6. Press the top edge, measure down 1" (2.54cm) and mark. Sew along marked line to create the casing (*Dia. B*).
7. Sew buttons to each side of Bag at eye placement marks. **Note:** Sew through Bag and Lining to attach buttons.

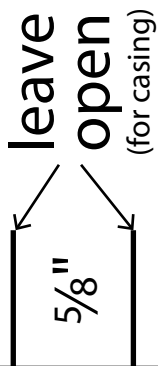


## Finishing

8. Attach the safety pin to one end of a ribbon, insert into opening and feed it through the casing until it reaches the same opening. Pull ends even and tie together. Repeat to feed the remaining ribbon through the other opening.
9. Pull ribbons to gather the Bag top closed.

## Finished Care Instructions

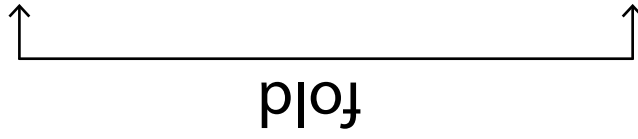
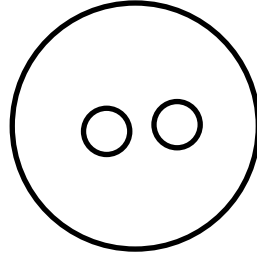
Machine wash in cold water; gentle cycle. Hang to dry or tumble dry low.



# BEACH BAG PATTERN

## HEAD

CUT 2 ON FOLD

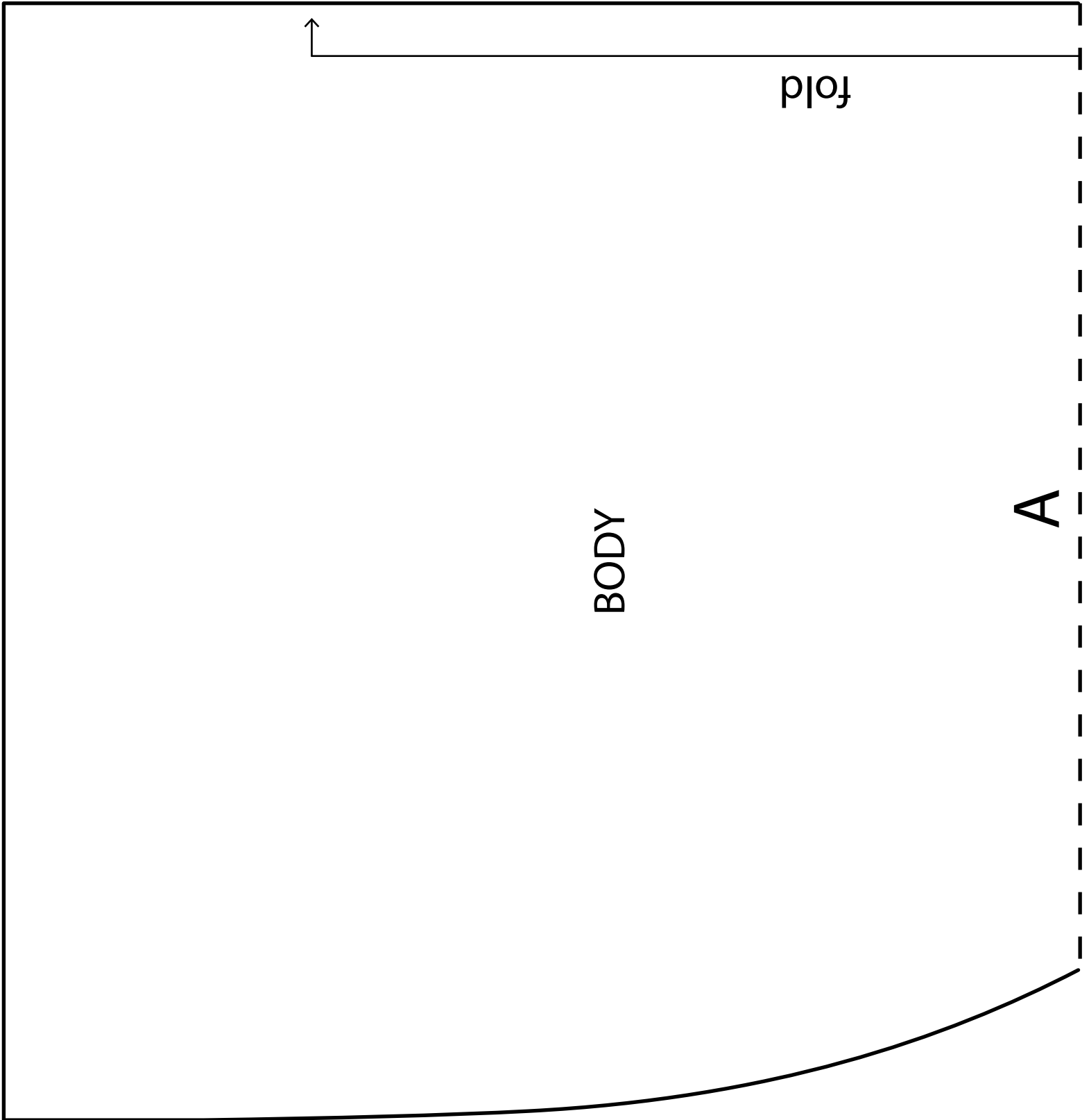


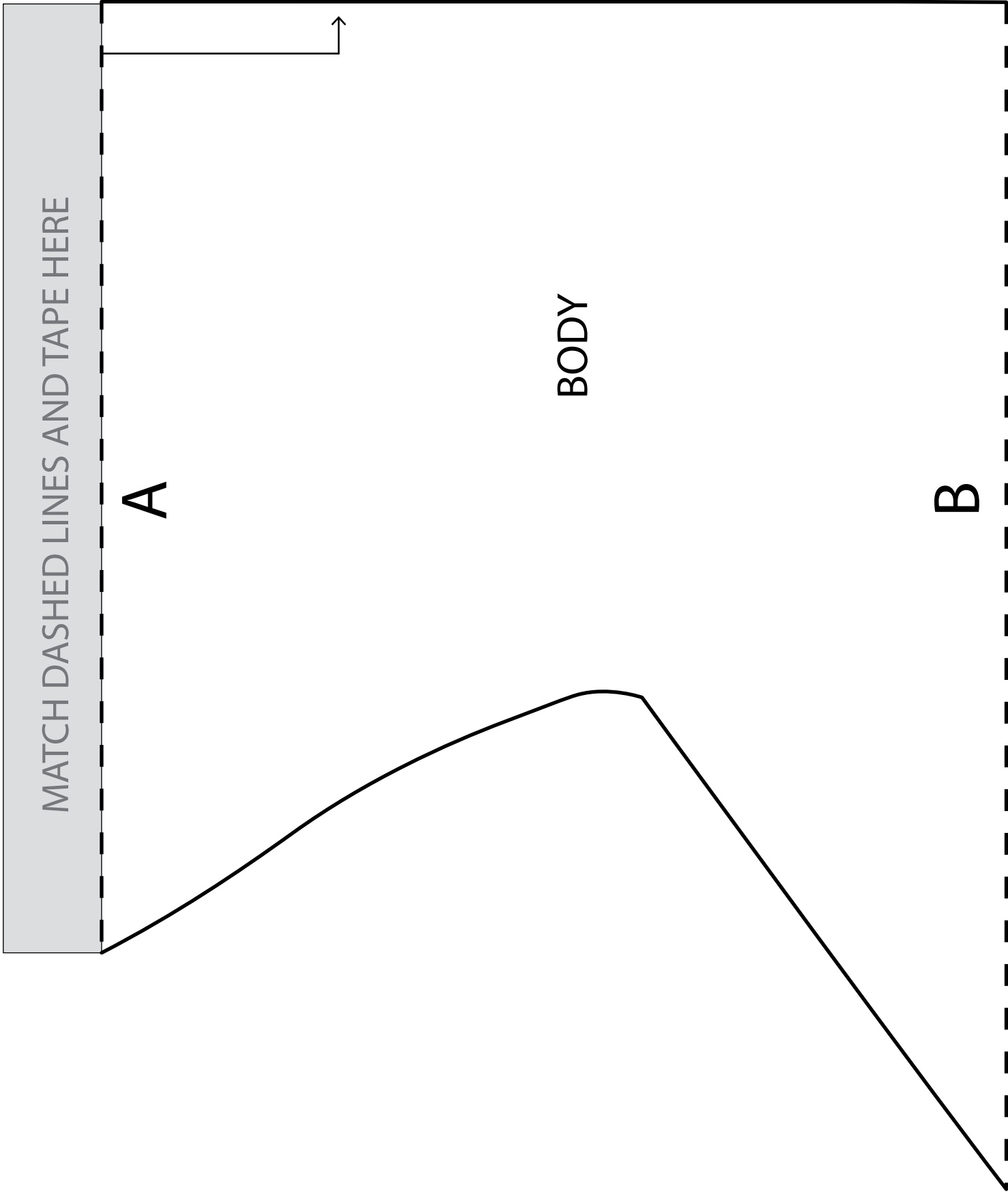
BEACH BAG PATTERN

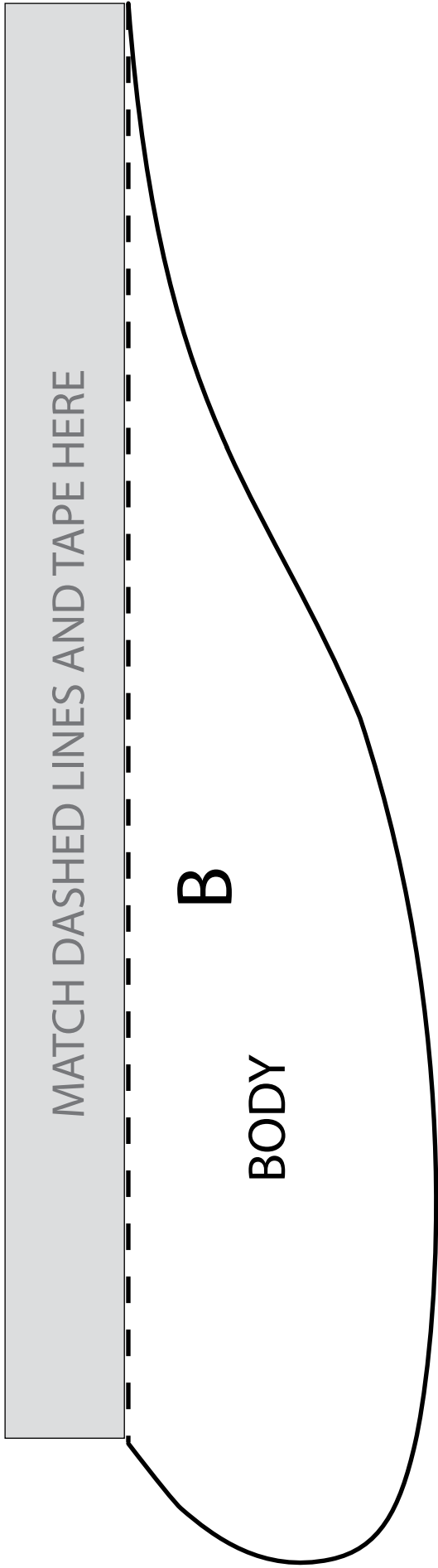
LINING

CUT 2 ON FOLD

C







MATCH DASHED LINES AND TAPE HERE

C

BEACH BAG PATTERN

LINING

CUT 2  
ON FOLD

D

MATCH DASHED LINES AND TAPE HERE



