

Pineapple

Finished Project Size: 3 1/4" x 9 1/2" (8.26cm x 24.13cm)



Supplies Needed

FOR 1 PINEAPPLE:

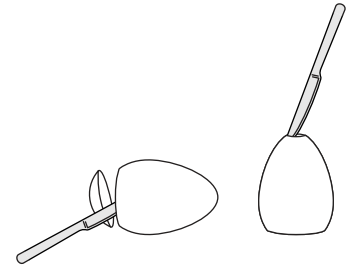
- 3 - 18" x 21" (45.72cm x 53.34cm) Coordinating fat quarters
- 6" x 16" (15.24cm x 40.64cm) Green felt rectangle
- 3 7/8" x 5 7/8" (9.84cm x 14.97cm) Styrofoam egg
- 1 pkg. 1/2" (1.27cm) Applique/sequin pins
- Small piece of cardboard
- Green thread
- Craft glue or Styro® glue
- Rotary cutter and acrylic ruler
- Basic crafting supplies
- Iron and pressing surface
- Kitchen knife

Before You Begin

ADULT SUPERVISION REQUIRED. Read all instructions before beginning project. Do not prewash fabrics. Before cutting, press fat quarters with a dry iron on cotton setting. **Note:** Do not press felt. Print Top and Bottom Leaf Templates at 100% scale and check measurements after printing to ensure correct print size. Squirt a small amount of glue on the cardboard to dip pins in.

Cutting

1. Using the knife, cut a thin slice off the wide end of the Styrofoam to create a flat bottom. Cut a nickel size hole approximately 1" (2.54cm) deep in the narrow end of the Styrofoam egg.

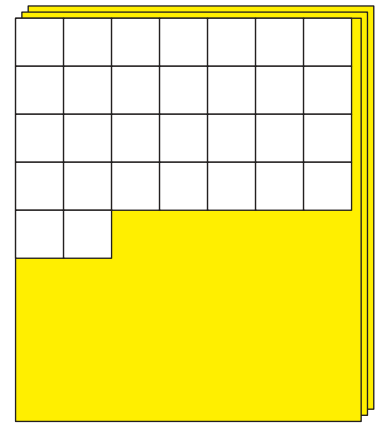


2. Use the rotary cutter and ruler to cut ninety 2 1/2" (6.4cm) squares from the 3 fat quarters.

3. Cut out the Top and Bottom Leaf Templates and pin to the felt; cut out along the edges.



Green Felt - 6" x 16" (15.2cm x 40.6cm)
Cut 1 - Leafy Bottom
Cut 1 - Leafy Top

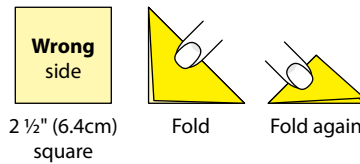


Fat Quarters - 18" x 21" (45.7cm x 53.3cm)
Cut 90 - 2 1/2" (6.4cm) squares

Constructing

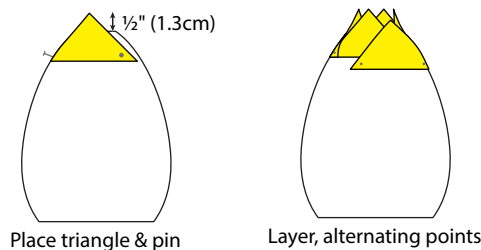
PINEAPPLE BODY:

4. Place a fabric square with the **wrong** side facing up. Fold the square diagonally and finger press the fold. Fold in half again to create a smaller triangle; finger press again.

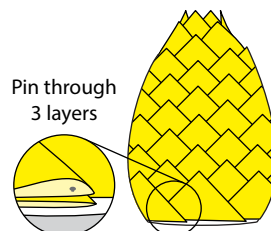


5. Place the fabric triangle with the tip 1/2" (1.27cm) up above the top of the Styrofoam egg (narrow end with hole). Dip the tips of two pins in glue and insert one in each corner along the bottom (cut) edge. Repeat with a second triangle and place it overlapping the pin of the previous triangle. Repeat with two more triangles to complete the first row.

6. For the next row, alternate the triangle points between the first four triangles in the top row. **Note:** Check that the pins are not visible.

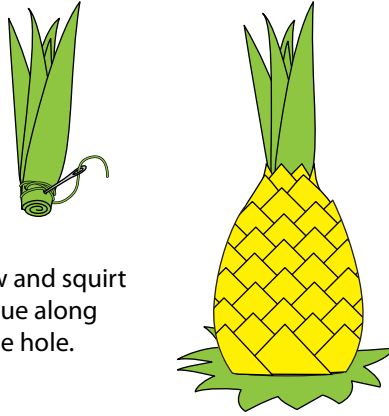


7. Continue to follow Steps 4 through 6 until the Styrofoam egg is completely covered. For the bottom row only, to hide the pins, lift up the top layer of the triangle corner and pin through three layers instead of four. **Note:** Check that there are no pins showing. The bottom row of triangles should be "sitting" on the bottom edge of the Styrofoam. If some Styrofoam is showing, use the knife to shave it off.



PINEAPPLE LEAVES:

8. Leafy Bottom: Using glue, outline the bottom edge of the Pineapple. Center the Leafy Bottom felt on top of the glue and press down. Add pins around the bottom edge to hold in place.
9. Leafy Top: On one side at the bottom edge, start rolling and gathering the felt until it's tight enough to fit into the hole at the top of the Pineapple. Hand stitch the bottom edge of the felt together.



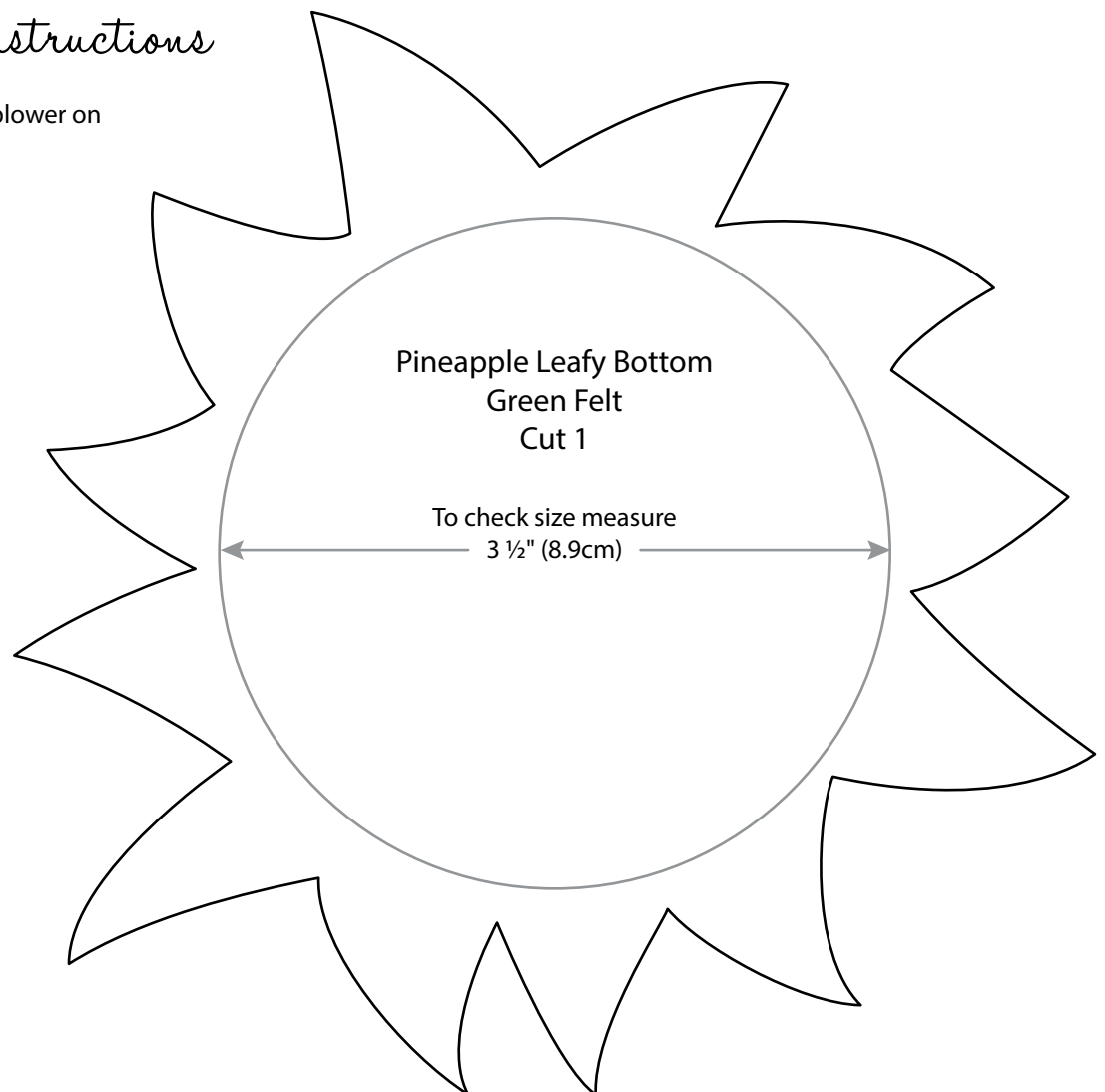
10. Carefully pull back the triangles in the top row and squirt some glue into the top hole. Place a row of glue along the stitched edge of the felt and insert into the hole.

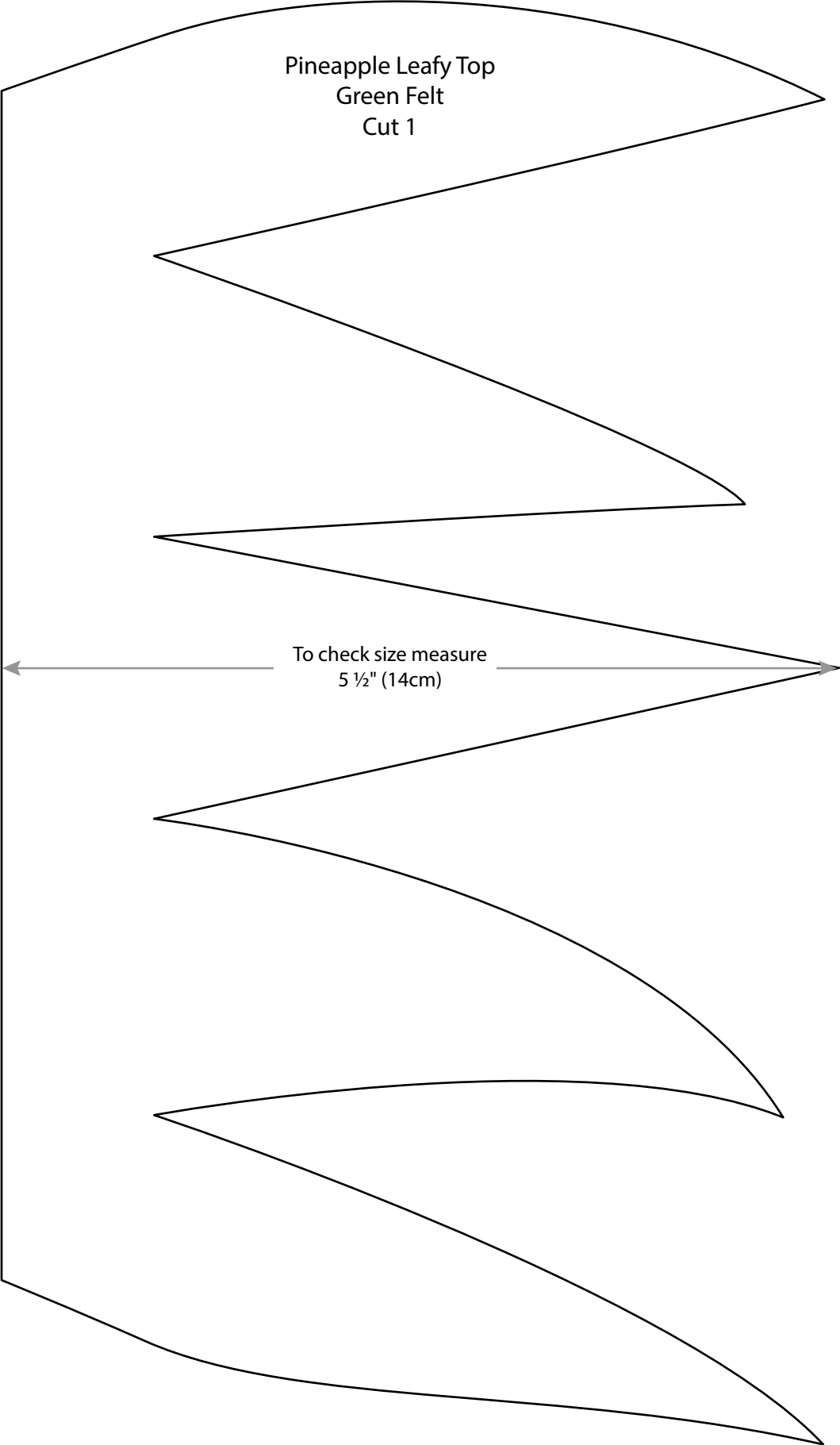
Finishing

11. Allow glue to completely dry. Shape leaves as desired.

Finished Care Instructions

12. Dust with a cloth or use a hair blower on cool setting to remove dust.





Pineapple Leafy Top
Green Felt
Cut 1

To check size measure
5 1/2" (14cm)