



# Pinwheel Floor Pillow

Finished Size: 46" x 46"

## Supplies Needed

- 1- Land of Whimzie® So Tweet or Peek-a-Boo Forest Bundle ( Fabrics A-F)
- Land of Whimzie® fabrics: (Fabric F)
  - So-Tweet: 2 ¼ yds. Multi Paisley
  - Peek-a-Boo Forest: 2 ¼ yds. Lt. Blue Letters
- Batting: 36" x 45"
- 6" x 6" Lightweight fusible web
- 5 lb. box polyester fiberfill
- Coordinating Thread
- 17" x 27" Paper
- Pencil
- Rotary cutter, & mat
- Acrylic ruler
- Scissors
- Basic sewing supplies; scissors
- Sewing machine
- Iron and pressing surface



## Instructions

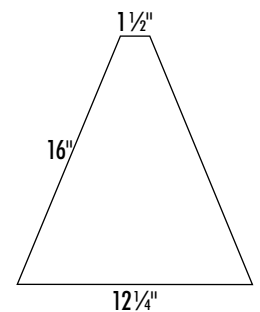
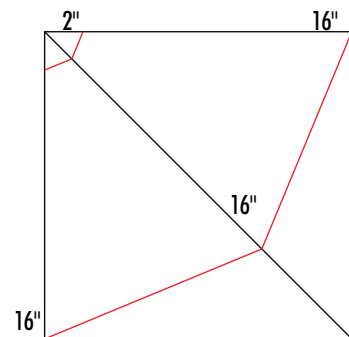
*Read all instructions before beginning project. Do not pre-wash fabrics. Use a ¼" seam allowance. Sew fabrics with right sides together (RST) unless otherwise noted. Before cutting, press fabrics with a dry iron on cotton setting. Press seams in the direction of the arrows.*

### 1. Templates:

#### Wedge Template:

Cut a 16" x 16" square from the paper. Draw a diagonal line from upper left to lower right, then measure 16" from the top left corner and mark. Draw a line to connect two opposite corners with the mark on the diagonal line. Mark 2" away from the top left corner on the two edges and the center diagonal. Draw a line to connect these marks. Cut out on the drawn lines to make two Wedge Templates (Dia. A).

Dia. A



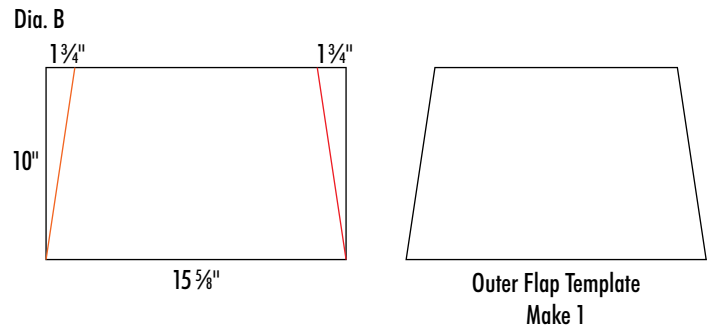
Wedge Template  
Make 2

*Care instructions: Spot clean as needed.*

# Project Instructions Continued

## Outer Flap Template:

Cut a 10" x 15 5/8" rectangle from the paper. Mark 1 3/4" from both sides of one long edge. Draw a line from the mark to the bottom corner. Cut off the marked section (Dia. B).



## 2. Cutting:

From Fabrics A and B (18" x 21"):

2 - Wedge Template (total of 4 wedges)

From Fabrics C, D, E and F (18" x 21"):

2 - Outer Flap Template (total of 8 flaps)

From the Fabric F yardage:

4 - Wedge Template

8 - Outer Flap Template

1 - 30" x 30" (backing)

1 - 6" x 6" square (center circle)

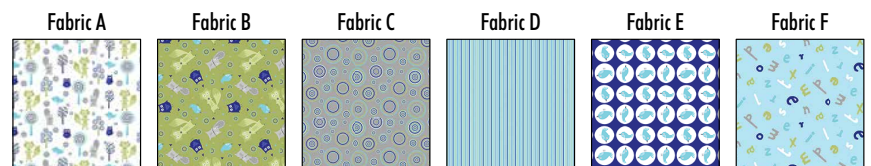
From Batting:

8 - Outer Flap Template.

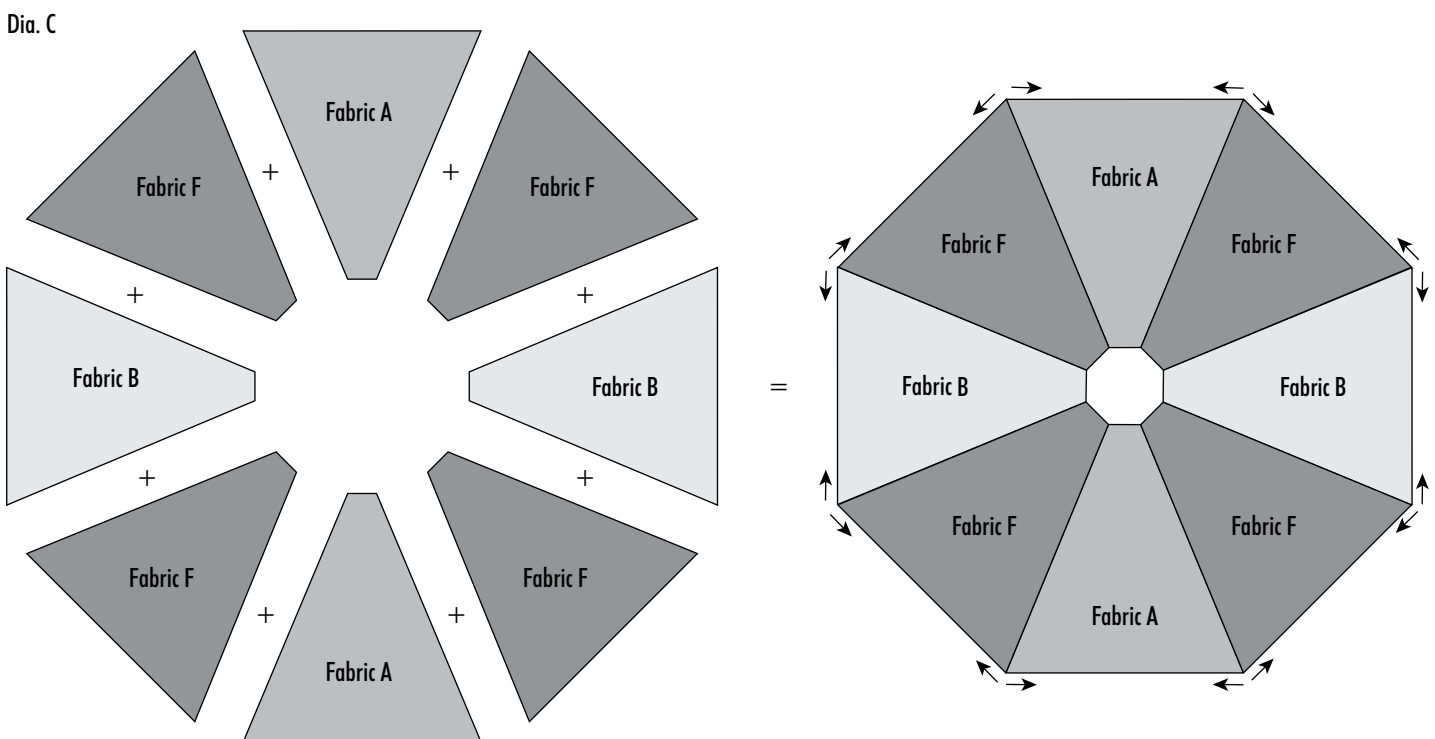
### So Tweet Fabrics



### Peek A Boo Forest Fabrics



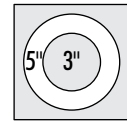
3. Sewing the Octagon Center: Lay out and sew Fabrics A, B, and F wedges as shown in Diagram C; press open.



## Project Instructions Continued

4. Using the circle template, trace one 5" outside and one 3" inside circle onto the paper side of the lightweight fusible web. Cut out the inside circle on the traced line and discard. Then cut out the outside circle about 1/4" beyond the traced line. Follow manufacturer's directions to fuse the circle to the **wrong** side of the 6" x 6" Fabric F square. Cut out on the outside circle along the traced line. Remove the paper backing (Dia. D).

Dia. D



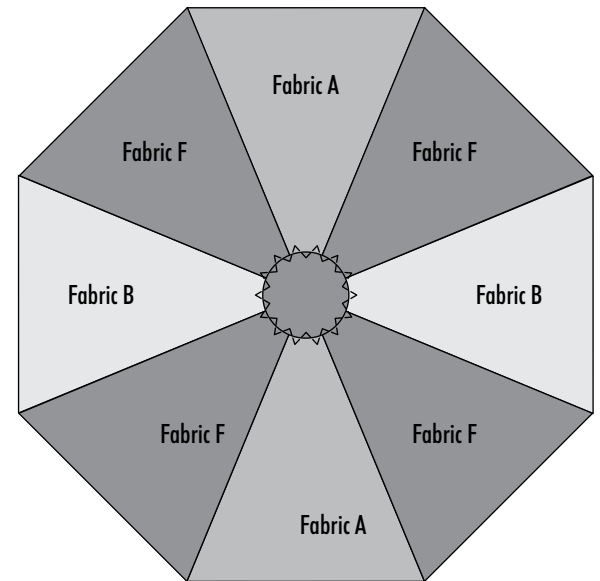
Lightweight Fusible Web - paper side up



Fabric F - 6" square **wrong** side up

5. Center the Fabric F circle on the octagon and fuse according to the manufacturer's directions. Using coordinating thread, finish and secure the edges with a small zigzag or buttonhole stitch (Dia. E).

Dia. E

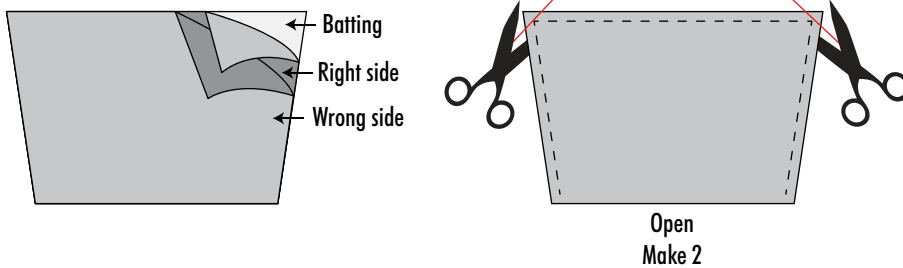


6. Using the pieces cut from the Outer Flaps Template, layer as follows:

- One Batting Flap
- One Fabric F **right** side up
- One Fabric F **wrong** side up

Pin and sew around the edges leaving the short edge open. Clip the corners and turn right side out. Gently push the corners out and press flat (Dia. F). Make 2.

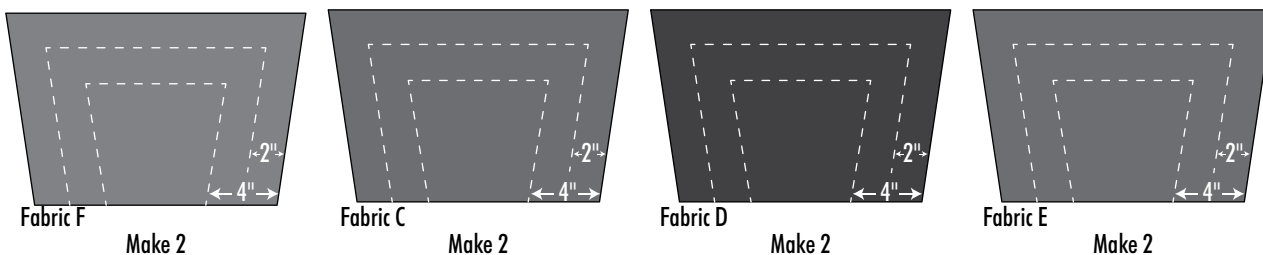
Dia. F



7. Repeat to make the remaining six flaps, layering Fabrics C, D, and E right side up on the batting, and Fabric F, **wrong** side up (Dia. G).

8. Quilt two rows of stitching, 2" and 4", from the outside edge (Dia. G).

Dia. G

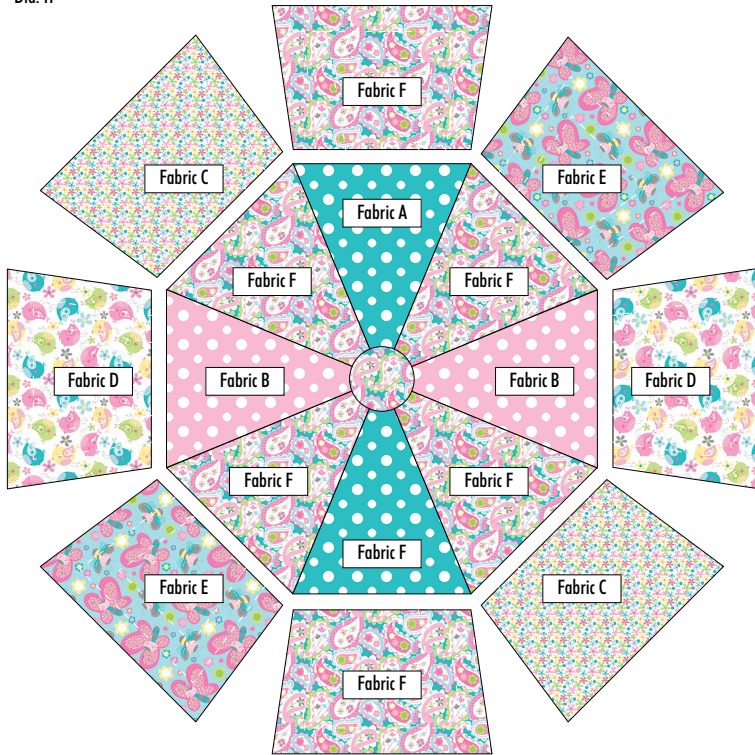


# Project Instructions Continued

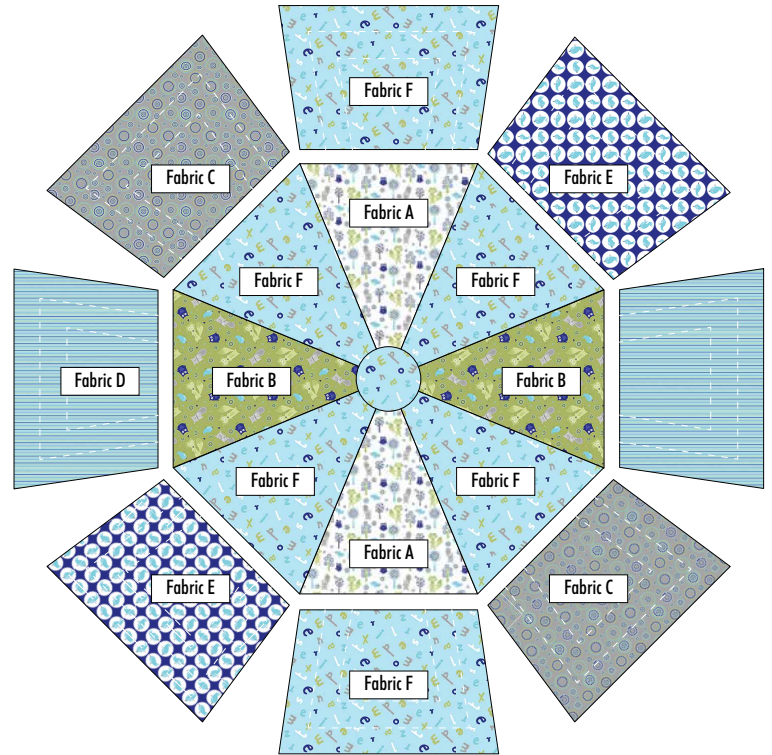
9. Place pillow center right side up and position the flaps as shown in Diagram H so the short edge of each flap lines up with the segments in the pillow center. Refer to Diagram I to pin the short edges to the segments and pin the long edges to the center. Sew around the outer edge. Remove pins from the outer edge only.

Dia. H

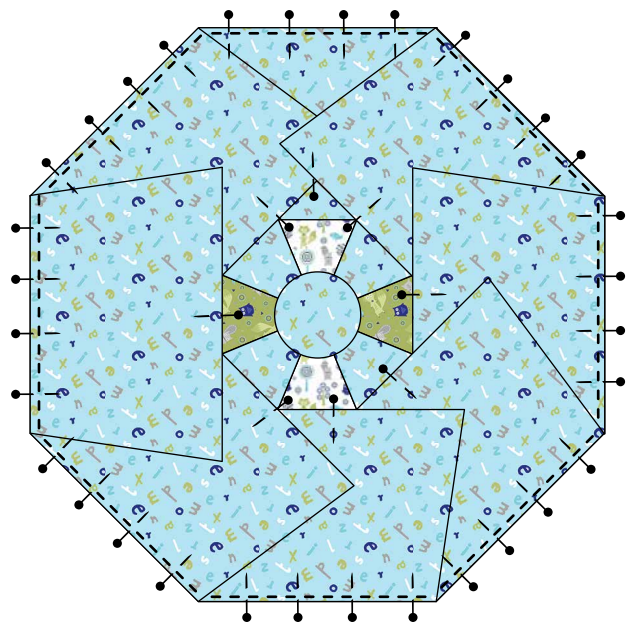
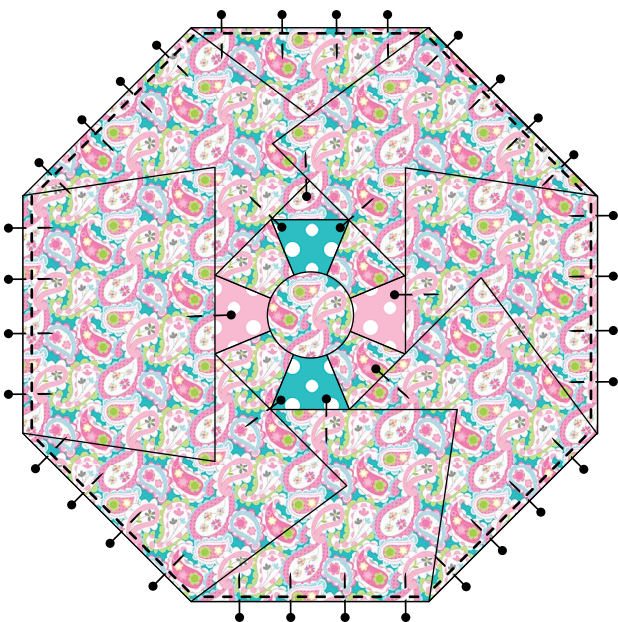
So Tweet Fabric Placement



Peek A Boo Forest Fabric Placement



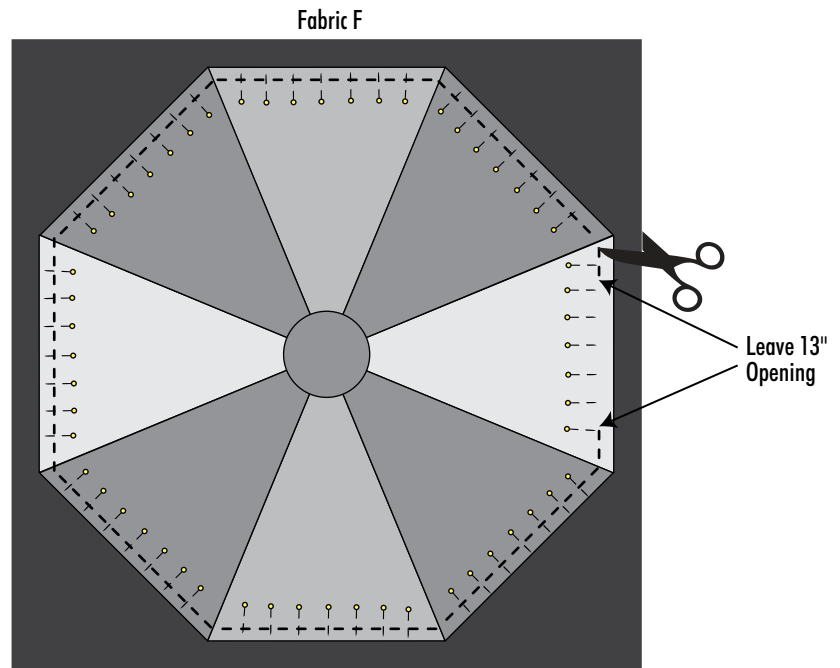
Dia. I



## Project Instructions Continued

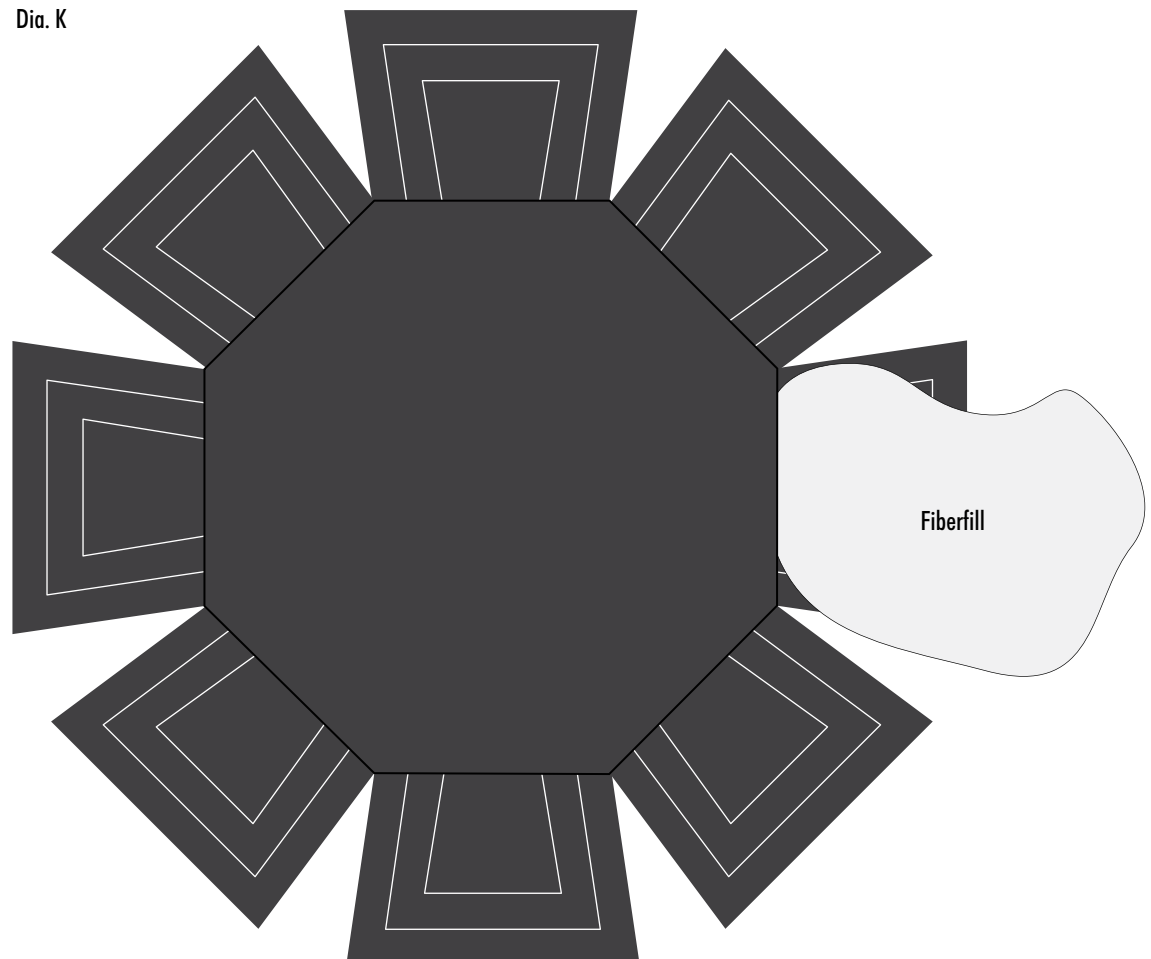
- Place the Fabric F square backing right side up and center the floor pillow top **wrong** side up on top of the backing; pin well. Sew together leaving a 13" opening in one segment for turning. Remove the pins and cut the excess backing even with the floor pillow top. Stay stitch the backing  $\frac{1}{4}$ " from the edge of the opening. Turn right side out and pull the flaps to flatten the mat (Dia. J).

Dia. J



- Stuff with polyester fiberfill through opening until firmly filled as stuffing will compress with use (Dia. K).

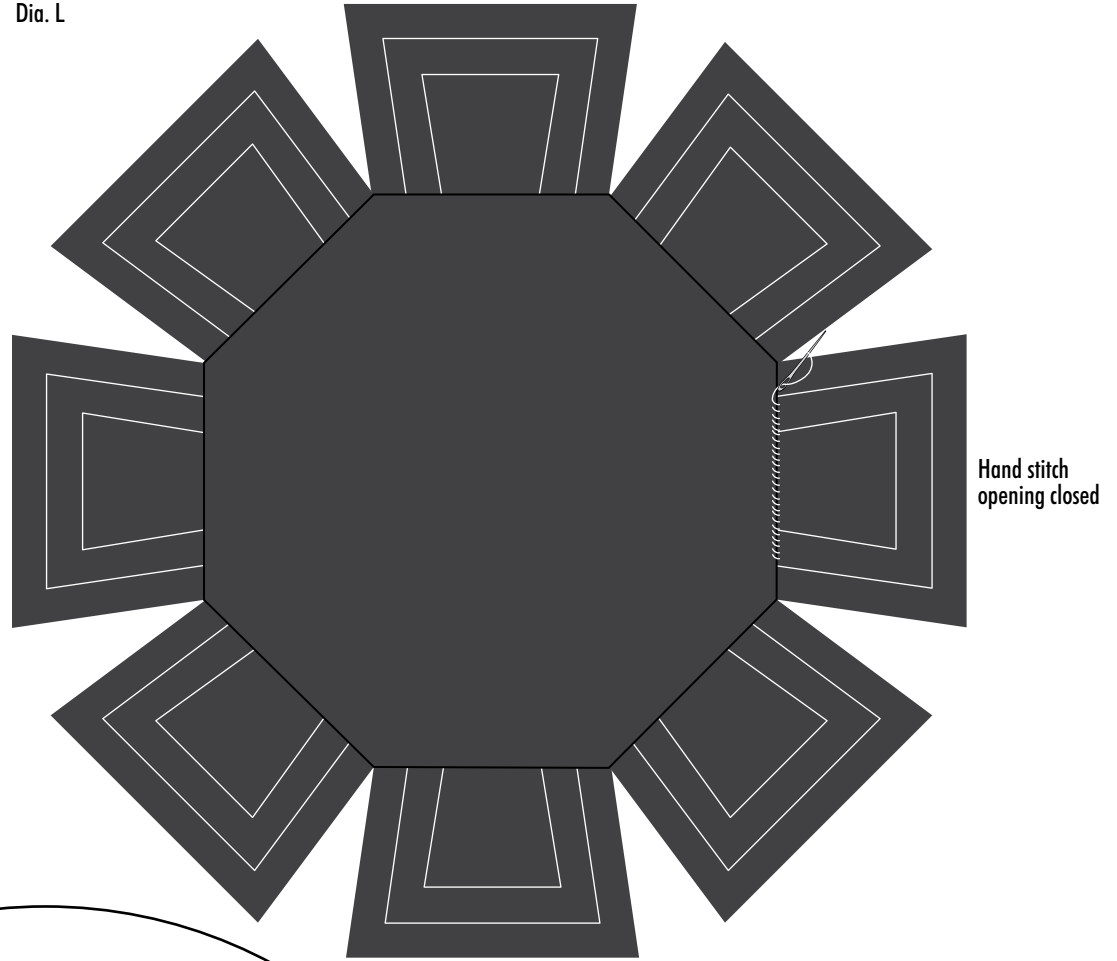
Dia. K



# Project Instructions Continued

12. Pin the opening closed, and hand stitch with double thread (Dia. L).

Dia. L



Circle Template

