



# Pocket Message Board

Finished size: 18" x 22"

## SUPPLIES NEEDED

- 1 - 1 Yard Burlap (Black Floral on Natural)
- 1 Poster frame (18" x 22")
- Foam core (16" x 20")
- Duct tape
- Ruler
- Sharpie® fine line marker
- Scissors
- Straight pins
- Flat head screwdriver
- Iron

## BEFORE YOU BEGIN

Read all instructions before beginning project. Do not prewash fabrics. Before cutting, press burlap flat with a dry iron on cotton setting.

## CUTTING

Burlap: 1 – 19" x 44"

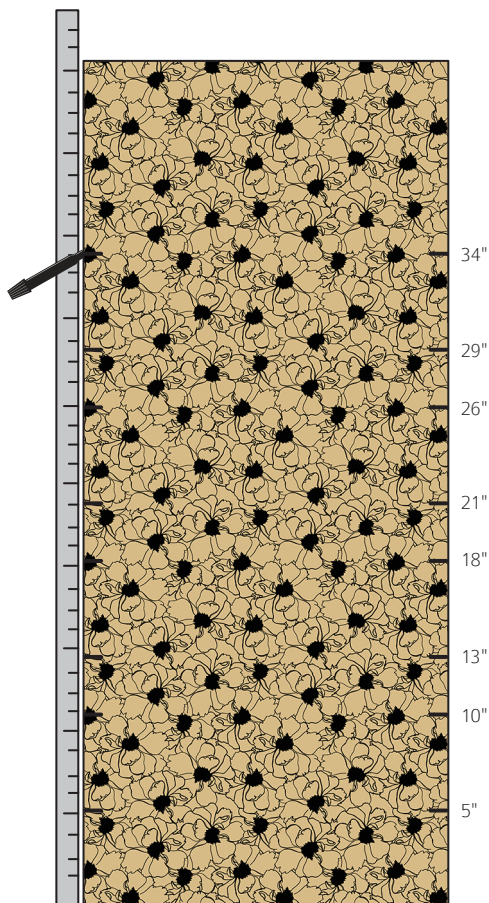
## INSTRUCTIONS

1. Place burlap on work surface with printed side facing up. Use a ruler and Sharpie® to mark fold lines along the edge of both sides of the burlap as shown (Dia. A).

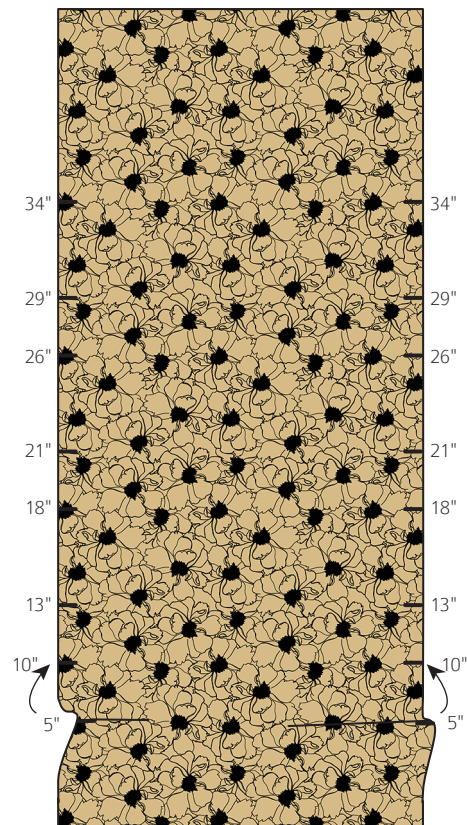
2. To make the first fold, use both hands to simultaneously pick up the burlap at the 5" marks, pinching the burlap to fold as you pick it up. Bring the folded edge up to the 10" marks and pin each side (Dia. B).



Dia. A

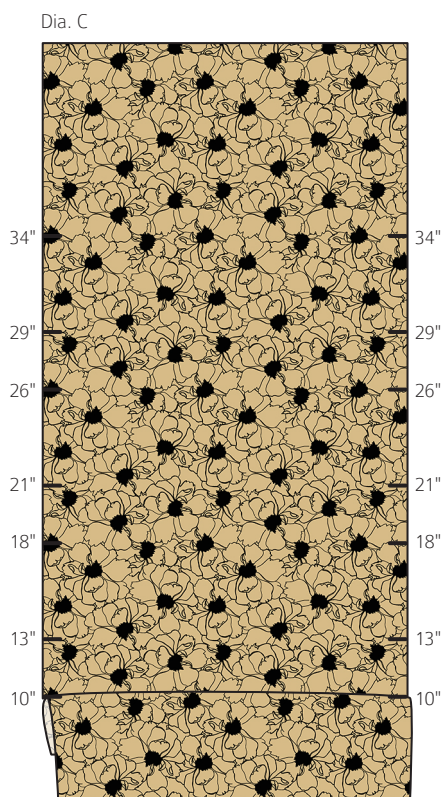


Dia. B

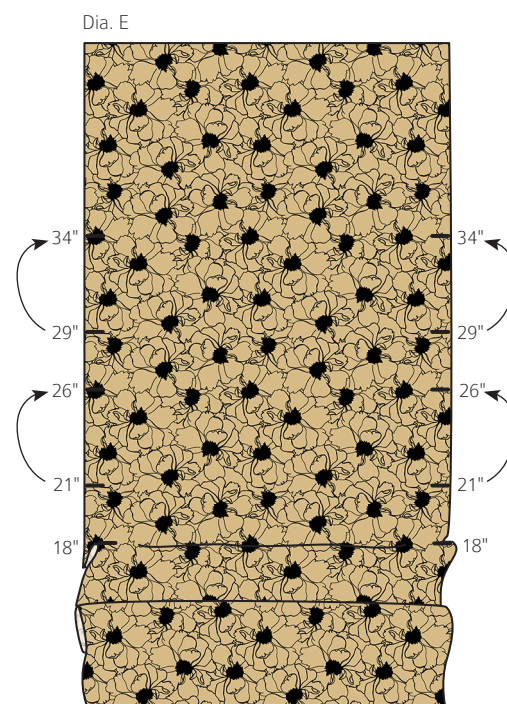


Hand press to carefully flatten the entire fold. Check that it's straight and pin (Dia. C).

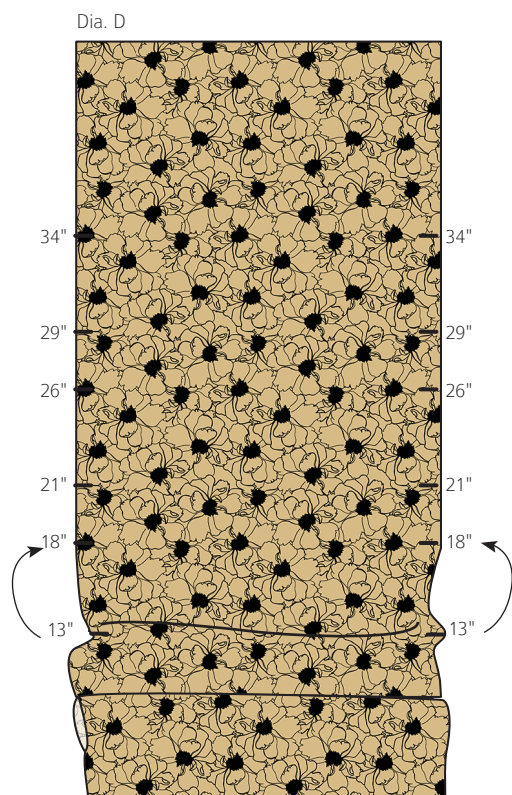
**Note:** A final pressing of the folds will be done after they are all pinned.



Follow Diagram E and repeat to make a total of four folds. Hand press folds as you go.



3. Make the second fold by picking up the burlap edges at the 13" marks and placing the fold at the 18" marks (Dia. D ).



4. Press pockets well (Tip: leave pins in place after pressing to make it easier to turn over). Tip: Use a damp pressing cloth if needed.

## FINISHING

5. Use screwdriver to pry up prongs and remove backing and plastic from purchased frame.

6. Turn burlap piece over so **wrong** side is facing up. Center foam core (16" x 20") on folded fabric. Fold burlap sides to the back and secure with Duct tape. Fold top and bottom to the back and tape; remove pins from burlap.

7. Insert covered foam core into frame and close prongs to secure. Place backing on top and secure with Duct tape all around the edges. Ready to hang and enjoy!

## FINISHED CARE INSTRUCTIONS

Dust as necessary.