



# Infinity Scarf

Finished size: 15 1/2" x 40 1/2"

## SUPPLIES NEEDED

- 2 - 1 Yard Cottons  
(White Multi Floral & Black Geo Flowers)
- Coordinating thread
- Acrylic ruler, mat, and rotary cutter
- Basic sewing supplies
- Sewing machine
- Iron

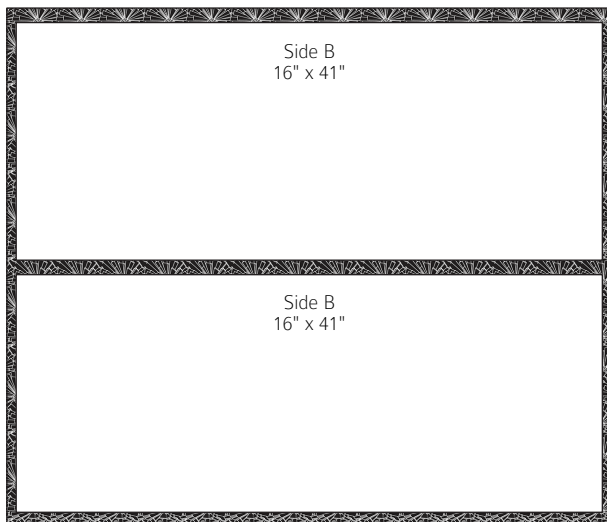
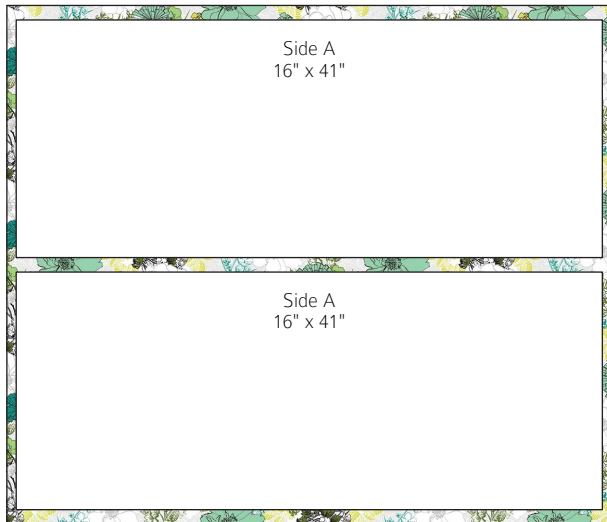
## BEFORE YOU BEGIN

Read all instructions before beginning project. Prewash fabrics in cold water. Before cutting, press fabrics with a dry iron on cotton setting. Use 1/4" seam allowance unless otherwise noted.

## CUTTING

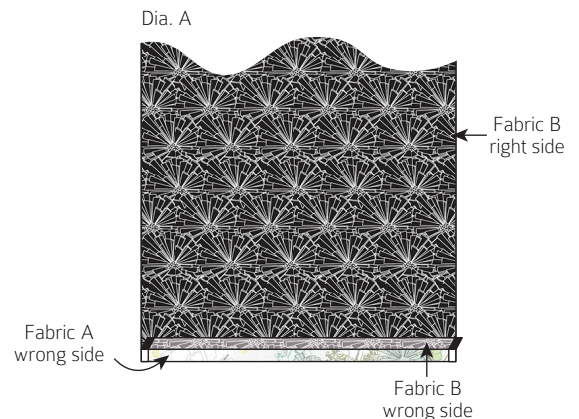
Fabric A: Two 16" x 41"

Fabric B: Two 16" x 41"

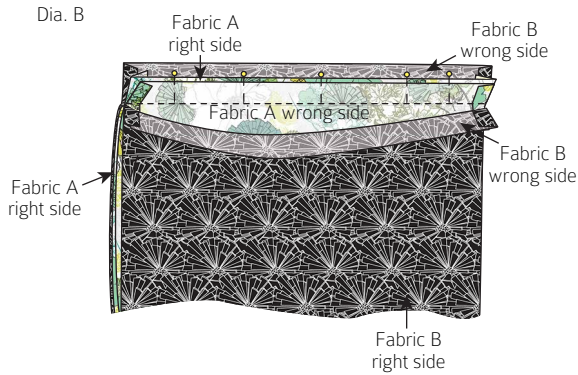


## SEWING

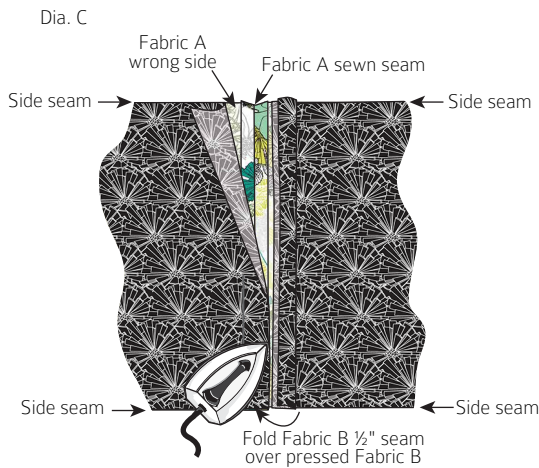
1. Place Fabric A pieces right sides together and pin along one short edge. Sew pieces together making one long strip; press seam open. Repeat using Fabric B pieces.
2. Place Fabric A and B strips right sides together and pin along the two long edges. Beginning 1/2" from one end, sew the two strips together, stopping 1/2" from the opposite end. Repeat steps for remaining long side, creating a large tube.
3. Turn tube to right side through opening and press.
4. With Fabric B facing up, press the cut edge of one short end 1/2" back toward the right side (Dia. A). Repeat on opposite short end of Fabric B.



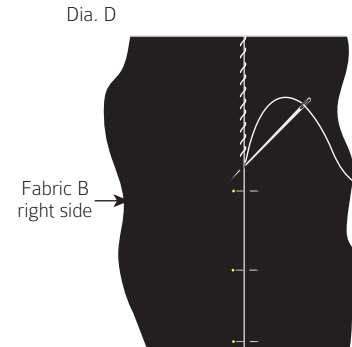
5. Check that fabric is not twisted and fold the tube in half, matching short cut edges of Fabric A; pin together. Check that Fabric B is folded back and free of pins. Using a ½" seam allowance, sew Fabric A short ends together (Dia. B). Press the seam open.



6. Press one short end of Fabric B flat and lay over the Fabric A seam (Dia. C).



7. Fold the remaining Fabric B cut edge ½" to the inside and press. Hand stitch the folded edge in place (Dia. D).



To wear the infinity scarf, place the large loop over your head, twist and then place the loop over your head again. Enjoy wearing your reversible fashion scarf!

### FINISHED CARE INSTRUCTIONS

Machine wash gentle cycle in cold water. Tumble dry on low or hang dry.