



Handbag

Finished size: 11 1/2" x 13" x 4"

SUPPLIES NEEDED

- 2 - 1 Yard Canvases (Gray Feathers and Citron Scallops)
- 1 Yard Pellon® Fusible interfacing (Peltex® 71F single-sided)
- Coordinating thread
- Sewing machine needle: size 90/18
- Long ball head pins (recommended)
- Basic sewing supplies
- Sewing machine
- Iron

BEFORE YOU BEGIN

Read all instructions before beginning project. Do not prewash fabrics. Before cutting, press fabrics with a dry iron on cotton setting. Use a 1/2" seam allowance and sew fabrics with right sides together (RST) unless otherwise noted. Backstitch at the beginning and end of seams to secure.

CUTTING

Gray Feathers: 2 - 17" x 17" squares (front and back bag) with feathers centered and running straight from top to bottom.

1 - 4 1/2" x 4" strip (loop)

Tip: Line up lengthwise with feather design.

Lime Scallops: 2 - 17" x 17" squares (front and back lining)

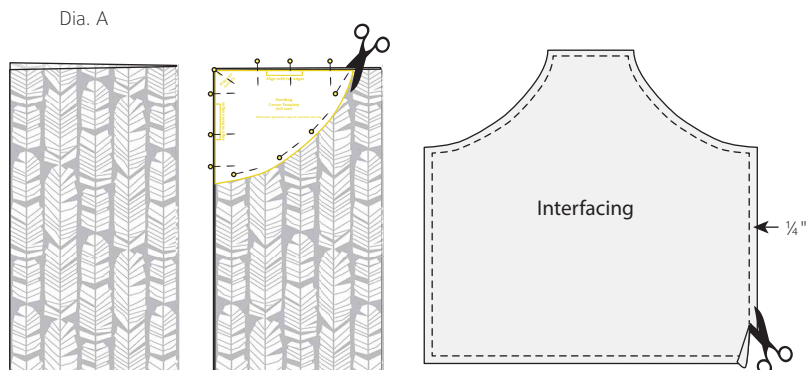
1 - 8" x 19" strip (strap)

Interfacing: 2 - 17" x 17" squares (front and back)

Copy corner template; cut out.

Fold bag front in half crosswise, as shown, checking direction of fabrics. Pin corner template in place aligning corners and edges. Cut along curved edge. Repeat for all remaining squares.

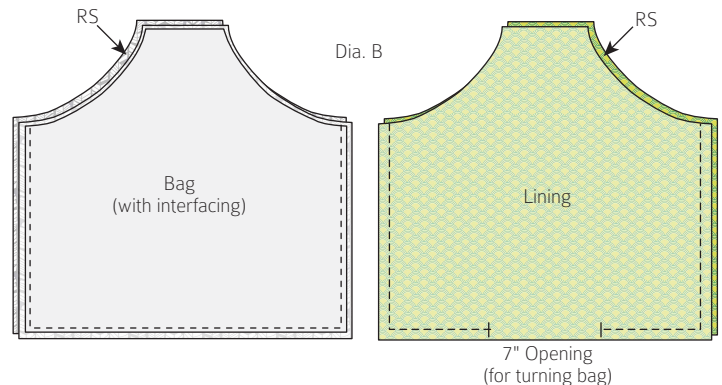
Note: Trim 1/4" from all edges of the interfacing pieces to reduce bulk in seams (Dia. A).



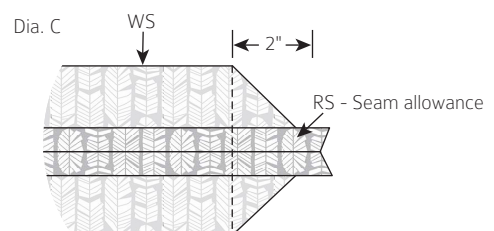
SEWING

1. Center interfacing pieces, fusible side down, on **wrong** sides of bag pieces. Fuse in place following manufacturer's instructions.

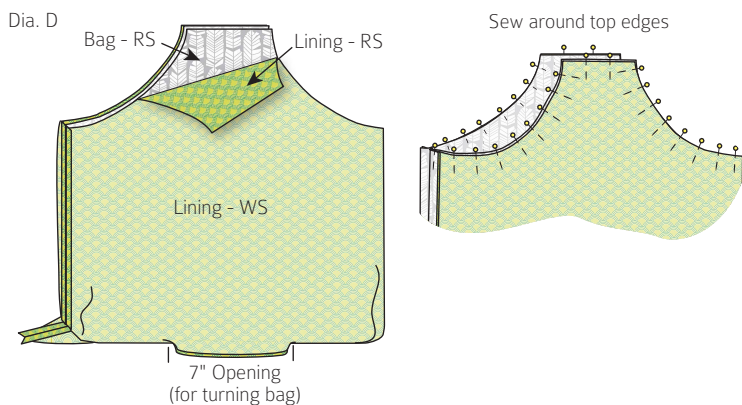
2. Place bag pieces RST, matching sides and bottoms; pin. Sew the sides and bottom; press seams open. Repeat with the bag lining pieces, leaving a 7" opening in the center of the bottom seam for turning the bag right side out (Dia. B).



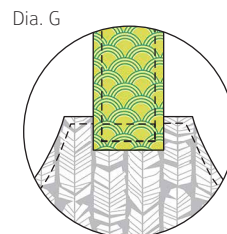
3. Make the box shape at the bag and lining bottoms by flattening a corner into a triangle and matching the side seam with the bottom seam. Tip: Stick a pin through the seams to match layers. Mark 2" from the tip along the seam, then draw a line from edge to edge. Sew through all layers on the drawn line. Repeat for the opposite corner. Trim corners 1/2" from stitching; zigzag cut edges (Dia. C). Repeat for lining.



4. Turn bag right side out and place inside the lining RST. Line up top edges; pin and sew around top edges (Dia. D).

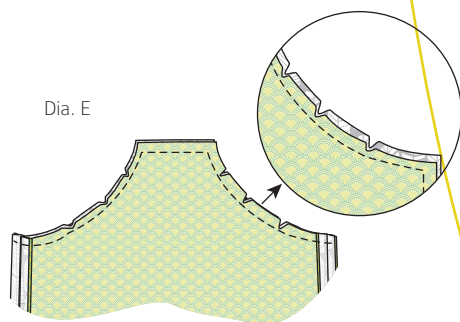


7. Center one end of strap on back of bag, 1 1/2" from the top edge. Pin in place and sew over the existing topstitching along the sides and bottom and across the strap even with the topstitching on the top edge of the bag (Dia. G).



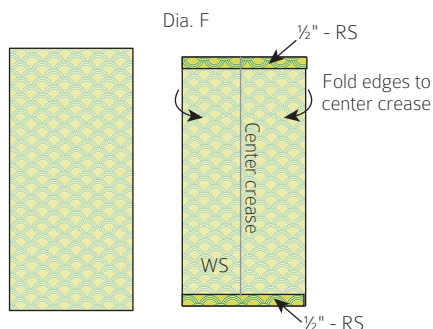
8. Bring the loose end to the bag front and pin the end 7" from the top edge. To attach, measure down 2 1/4" from the top edge and sew across the strap several times.

Trim corners; clip curved edges and grade seams (Dia. E).

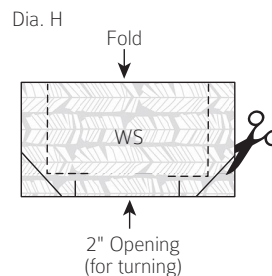


5. Turn bag right side out through opening in lining. Push lining inside and press firmly along top edges to flatten. Pin the layers so lining doesn't show on the outside of the bag. Topstitch 1/4" around the top edge. Sew the opening in the lining closed.

6. Fold the short ends of the Lime Scallops straps under 1/2" to the **wrong** side; press. Fold in half with **wrong** sides together. Press well to make a center crease. Open and fold each long edge to the center crease; press firmly (Dia. F). Fold strap in half to enclose all raw edges. Pin and topstitch 1/4" from all edges.



9. Fold the Gray Feathers loop in half with right sides together, matching short ends; press. Sew around the open edges, leaving 2" open in the center of one short end (Dia. H). Clip corners diagonally and turn right side out. Press edges of opening to the inside and topstitch 1/4" from all edges.



10. On the front, center the loop over the strap stitching; pin. Sew across each short end several times to secure.

FINISHED CARE INSTRUCTIONS

Spot clean with cool water and mild detergent.

Handbag Corner Template (full size)

Permission granted to copy for personal use only.

