

Christmas Wreath

Project Instructions

Finished Size: 15" (38.10cm) diameter

No Sew!



**Also great for Spring & Fall wreaths,
Welcome Baby wreaths, or any other occasion!**

Supplies Needed

- 5 Fabric Palette® Christmas Fat Quarters (18" x 21")
- 1 pkg. White tulle (54" x 108")
- 1 pkg. Red satin ribbon (1 ½" wide x 4 yards)
- 1 - 12" Green wire wreath frame (box style)
- Heavy spray starch
- Scissors
- Rotary cutter, mat, and acrylic ruler
- Iron

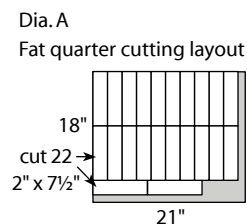
Before you begin

Read all instructions before beginning project. Do not prewash fabrics. Spray each fat quarter with heavy spray starch following manufacturer's instructions and press before cutting.

Cutting

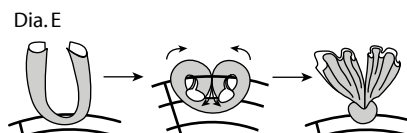
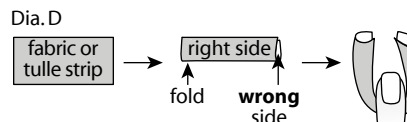
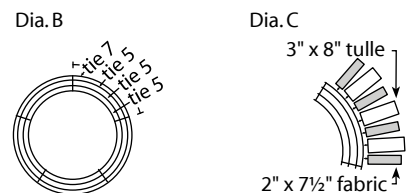
White Tulle: 110 - 3" x 8" strips

Each Fat Quarter: 22 - 2" x 7 ½" (110 strips) (Dia. A)



Assembly

1. Arrange the fat quarter strips as follows, seven in each outside segment, and five in each inside segment of the wreath frame (Dia. B). Alternate fabric and tulle strips (Dia. C).
2. For each strip, fold in half **wrong** sides together and wrap around your index finger to form a loop (Dia. D). Place the loop part of each strip over the outside of the bar. Push the two tails of the fabric under the bar and through the fabric loop, and pull the tails tight to the outside of the frame (Dia. E). Separate the tail ends to fluff the wreath. Continue to add fabric and tulle strips to fill the wreath frame.
3. Tie the satin ribbon to the inner wire at the bottom of the wreath and make a bow as shown in photo.



Finished care instructions

Dust gently as needed.