

Class Supply List

English Knot: 68" x 91"

- ✓ **Pattern:** "English Knot" can be found in the *Stashastic* book by Antler Quilt Design, must be purchased before class.
- ✓ **Fabric requirements:** (Based on standard 42" fabric.)

Fabric Requirements:

Materials

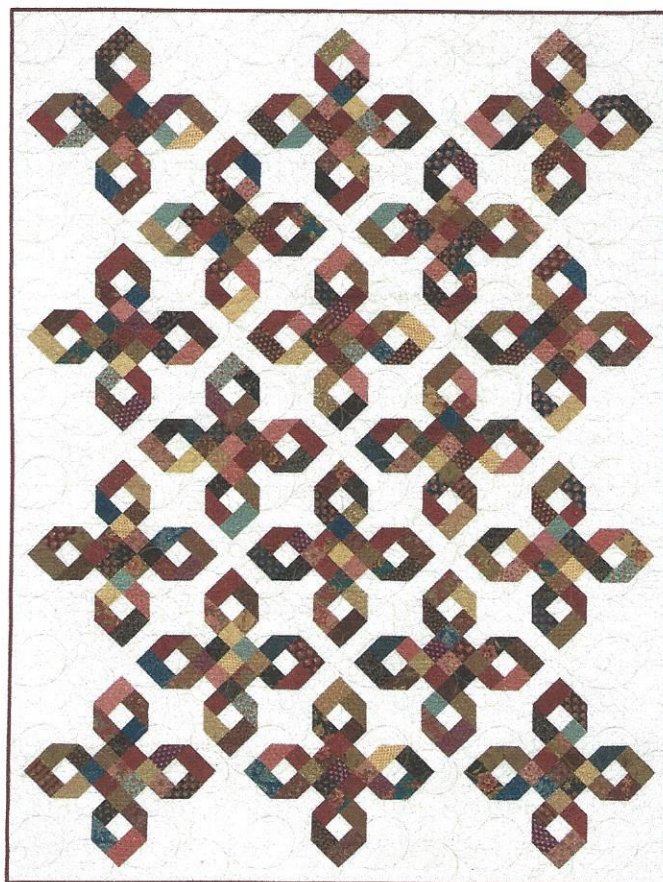
Yardage is based on 42"-wide fabric. Fat quarters measure 18" x 21".

5¼ yards of gray print for blocks, sashing, and setting triangles

18 fat quarters of assorted prints for blocks and binding

6 yards of fabric for backing

77" x 99" piece of batting



Alternate Colorway



Because this version of English Knot is truly scrappy, it isn't necessary to pair your fabrics as instructed in "Making the Blocks" on page 9. For the blocks, you'll need 3¼ yards of assorted prints or scraps, cut into a total of 216 rectangles, 2½" x 4½", and 234 squares, 2½" x 2½". For single-fabric binding, you'll need ¾ yard of fabric cut into 9 strips, 2¼" x 42".

Pieced by Doug Leko and Janet Moser; quilted by Steve and Deb Palmer



Homework: Please pre-cut before class, so you have more time to sew in class – Look on page 2

Note: Pre-washing is recommended, but not required. (Use a narrow zig-zag stitch on the edges of your fabric to keep it from fraying in the washer and dryer.)

Necessary Supplies for Class:

- ✓ **Sewing Machine** that has a straight stitch and is in good working order.
- ✓ **Sewing Machine Needles** – you just never know when they might break.
- ✓ **100% Cotton Thread** that goes with your fabrics.
- ✓ **Rotary Cutter** with a sharp blade. (Cutting mats are available in classroom.)
- ✓ **Rulers:** 6" x 12", 6" x 24" and a 12 ½" square ruler.
- ✓ **Scissor, Seam ripper, Straight pins**
- ✓ **Marking Pencil** – recommend Sewline
- ✓ **Zippered bags to label and keep cut pieces in.**

Cutting

All measurements include ¼"-wide seam allowances.

From the gray print, cut:

3 strips, 22" × 42"; crosscut into:

- ◇ 3 squares, 22" × 22"; cut into quarters diagonally to yield 12 side triangles (2 will be extra)
- ◇ 2 squares, 11½" × 11½"; cut in half diagonally to yield 4 corner triangles

3 strips, 14½" × 42"; crosscut into 48 rectangles, 2½" × 14½"

5 strips, 4½" × 42"; crosscut into:

- ◇ 72 rectangles, 2½" × 4½"
- ◇ 4 squares, 4½" × 4½". Cut into quarters diagonally to yield 16 sashing triangles (2 will be extra).

15 strips, 2½" × 42"; crosscut into 233 squares, 2½" × 2½"

From *each* print fat quarter, cut:

2 strips, 4½" × 21"; crosscut into 12 rectangles, 2½" × 4½" (216 total)

2 strips, 2½" × 21"; crosscut into 13 squares, 2½" × 2½" (234 total)

1 strip, 2¼" × 21" (18 total)