



Time to Sew

Vol. 31 - No. 1

Appletree Quilting Center

Spring 2016

Upcoming Events:

Jan. 29..... Big Reveal
Runway Event @ 6:30 pm

Jan. 31..... Big Reveal
Runway Event @ 2:00 PM

Feb. 6 Bernina Club

Feb. 13 Viking Club

Feb. 19 Give Back Friday

Feb. 26 Frond Trunk
Show

Feb. 27 Weaving
Workshop

Mar. 12..... Viking Club

Mar. 18-19Handi Quilter
Classes

Mar. 25..... Give Back Friday

Apr. 2 Bernina Club

Apr. 9 Viking Club

Apr. 22 Viking Epic Event

A Publication of
Appletree Quilting Center
Millie Kaiser, Owner
Established in 1985;
30 years in business!
Millie Kaiser: Publisher & Editor
Copyright © 2016

The Magic Stop Watch, from a vintage **Twilight Zone** episode, in our Time to Sew Logo, above, is to help you tune out and turn off the routine of everyday life and enjoy a few minutes of sewing pleasure with us!

Contact Information:
Appletree Quilting Center
2541 Bernadette Dr
Columbia, MO 65203
573-446-2655
1-800-269-2655
sewing@appletreequilting.com
www.AppletreeQuilting.com

Greetings:

Well here we are at the end of January 2016! So far it hasn't been too bad a winter at least not compared to what the east coast has received. I hope you have had a great start to this new year. Remember, spring will be here soon!

We are starting off our **Spring Class Unveiling as a Grand Reveal Runway Event** on Friday evening, January 29th and again on Sunday afternoon, January 31st. I hope you have a chance to join us for this fun event. New samples will be hung the first week of February and classes will begin shortly thereafter. We hope you will be able to join us for some of our fun classes this spring. Nothing gets you back into sewing better than starting a new project and learning a new skill!

We have three exciting new special events scheduled for this spring. The gals from **Fron Design Studio** will be back to visit us on Friday evening February 26th for a fabulous new trunk show and Saturday February 27th for an all day workshop on panel weaving. See details on page 3 and sign up soon. We have a



new educator coming from **Handi Quilter** this March 18th and 19th. Susan Manry will be our very special educator with four fun new classes on longarm quilting. Look for details for Susan's classes on page 4. The early bird discount for class registration ends on February 18th, so don't delay!

If you missed our first **Viking Epic Event** last November, never fear! We have another hands-on event scheduled for Friday, April 22nd with Barbara Bathe from Husqvarna Viking. This will be a great opportunity to try out the brand new top of the line Viking Designer Epic. See details on page 2 and sign up by March 12th to save \$15 off your event registration. Why not talk a friend into joining you for one of these great events at Appletree Quilting Center this spring?

Viking Extravaganza of EPIC Proportions



The Revolutionary NEW Epic

10:00 AM – 4:00 PM Friday, April 22

It's finally here! Don't miss this opportunity to find out why the NEW Designer Epic sewing and embroidery machine is the greatest on the market today!

Sign up today to experience the Designer Epic! Be among the first to experience how our new "smart" machine can help you achieve expert level results easier than you ever thought possible. Join us for a fabulous fun-filled day and personally experience how the new Husqvarna Viking Designer Epic can make all your sewing and embroidery dreams come true!

You will make one or two beautiful projects (depending on time): a stunning Cutwork Clutch and a handy Tablet Holder. You will receive the kit supplies for both projects. Learn how your own ideas can be translated into anything you can imagine – the latest HUSQVARNA VIKING® technology makes it all possible. If you can imagine it, you can make it. Come and see how!

Registration Fee: \$95. This includes your supplies for both kits for a cutwork clutch and tablet holder plus lunch.

Early Bird Discount: Sign up by March 12th to SAVE \$15 OFF your registration fee.

Barbara Bathe, our Viking Specialist, has an unique theory, one that has proven successful not only in her own sewing and embroidering career, but has translated into the "I can do it" incentive and motivation for her event participants – that theory is that everyone needs to make every sewing and embroidery mistake at least once! She feels



that every embroidery project is a blank canvas, where the unknown is first tried, then perfected. Barbara loves to learn and master "cutting edge" techniques, designs, notions, and software. Whether it's adding the perfect embroidery design to her quilts, or creating the perfect bag using all the latest notions, she enjoys it all! Barbara has the immeasurable advantage of a 14-year retail career, both selling and troubleshooting machines, as well as teaching. Her reward is making her students feel successful as they move from "blank canvas" to the latest in Husqvarna Viking® sewing and embroidery machine features and techniques.



FronD Design Studio

By
Sarah Gustason

7 – 9 PM Friday, Feb. 26th

10 AM – 4 PM Saturday, Feb. 27th

FronD Design Studios is a fabric design house in Cedar Rapids, Iowa. They are a collective group of mostly Midwest artists committed to original ideas and fresh, new concepts. These amazing artists believe if you are going to create something special, you should want the best quality fabric and gorgeous prints from original hand painted designs on your fabrics! And that's exactly what you get from their exquisite fabrics. See them for yourself at **Appletree Quilting Center**. Better yet, join us this February to visit with **Sarah Gustason from FronD Design Studio**. She will give an amazing Seminar, Trunk Show & Shopping Extravaganza Friday evening followed by a great hands-on **Fabric Weaving Workshop** on Saturday.



Fabric Weaving Workshop

A new technique from FronD Design Studios, the Weave is a fun and fabulous way to add dimension to our hand designed art fabrics. You will take two fabrics and weave them together to come up with something even more wonderful! Come spend the day with us and learn a new technique that you can incorporate into a wall hanging, bag, pillow or garment. We will also touch on narrow hems, jumbo piping and quilting in the hoop! What fun!

Registration Fee:

Friday Evening = \$35
Saturday Workshop = \$80
or \$100 for both events.



Handi Quilter®

Designed by a Quilter, for Quilters.®

Appletree Quilting Center is your local Handi Quilter Official Retailer. If you have been dreaming of your very own quilting studio, then plan to attend our **upcoming two-day workshop to learn all about Handi Quilters, Friday and Saturday, March 18th and 19th with Susan Manry.**



Stepping Stones from Quilt Top to Quilted Top! **9:00–Noon Friday, March 18**

This class is for everyone – whether you’ve never quilted and want to learn, or you already quilt. This overview covers the step-by-step process, from selecting a quilting design to the first quilting stitches. You will learn how to resize and apply designs, choose batting and backings, baste quilt tops, and all about threads, needles and tension. You will be on your way to finishing your quilts! Topics include:

- Select, resize, audition and apply quilt designs;
- Preparing the quilt top and backing;
- Batting selection and basting;
- Stitch-in-the-ditch and meander quilting;
- Introduction to HQ Pro-Stitcher®.

Longarm Boot Camp Basics **1:30–4:30 PM Friday, March 18**

Would you like to learn more about longarm quilting? Or do you just need a review of longarm quilting basics? This class takes the mystery out of longarm quilting by acquainting you with the basic terms, machine features, and how to load a quilt. Handi Quilters come in various sizes for every budget, and are designed by a quilter, for quilters – just like you! Topics include:

- Definition of longarm quilting terms;
- Basic machine features;
- Loading quilts;
- Bobbins;
- Tension, needles and thread.

Registration Fee: \$35 per class or sign up for all four classes for only \$120.

Early Bird Discount: Register by Feb. 18th to SAVE \$20 OFF the 4-class fee or \$5 OFF the individual class fees.

Susan Manry will be our special Handi Quilter Educator. Growing up, Susan’s interests included textiles, drawing, design, and a broad range of arts and crafts. While raising three busy children and running an insurance business, her hobbies expanded to include digital drawing, web authoring, and computer technology. Yearning for a career using her creative talents, Susan was smitten after discovering long arm quilting, the combination of her creative joys in one activity! Fabric, drawing, design, and sewing all in one complete package was simply too enticing to resist, and soon she was happy with her Handi Quilter. Mastering Pro-Stitcher and Art and Stitch, and seeking innovative ways to use both, Susan now enjoys quilting professionally with the HQ Infinity®. Susan believes she was meant to quilt, and she relishes any opportunity to share her love and knowledge of the craft with others. She lives in Central Texas with her husband and two pups.



You Can Do That on a Longarm? **9:00–Noon Saturday, March 19**

A longarm isn’t just for quilting tops! Come see how techniques usually done with a sewing machine can be accomplished with a longarm machine. You’ll leave with brilliant shortcuts and ideas for quick and easy projects, and a whole new perspective on what’s possible with a longarm! Topics include:

- “Slap-li-que”;
- Couching and embellishment;
- Creating chenille;
- Strip piecing and quilting as you go;
- Applying binding with the longarm.

Machine Quilting Problem Solving **1:30–4:30 PM Saturday, March 19**

Every quilter runs into common problems such as how to deal with fullness, how to create a square quilt, and how to handle crooked seams. Now you can learn the same tips and tricks professionals use to solve these problems in order to finish quilts that look spectacular. Learn many shortcuts, specialty tools, and organizational tricks. You’re sure to have some “aha” moments in this class. Topics include:

- Creating a square quilt;
- Batting guidelines;
- Dealing with fullness;
- Turning a quilt.

Spring Classes

Kids Fun Sewing Classes

Kids Basic Sewing Classes with Beth

Your child (ages 8 to 14) will enjoy learning basic sewing techniques in this fun class. They will be making kid- friendly projects through



careful step-by-step instruction and hands-on sewing in class using quality Viking sewing machines. With Beth's help, they will make their own pillowcase or drawstring bag. Fee \$30 per class or both classes for \$50.

EZ Pillowcase Class: 9:30 – Noon Fri. Feb. 26

Drawstring Bag Class: 2:00 – 4:30 PM Wed. Apr. 27

Kids PJ Pants

.... with Beth

A. 10:00 – 3:00 PM

Fri. Feb. 5

Everyone loves warm and cozy pj pants whether they're made from cotton or soft flannel. This easy to sew pattern is great for the beginner (12 years or older) or the seasoned sewer. Take your sewing to the next level and learn to make these easy pajama pants! This is the perfect class for your youngsters who are out of school this day and have taken FACS in middle school. Fee \$45.



Quick and Easy Bag Classes

Boho City Pouch Bag

.... with Suzanne

A. 4:30 – 8:30 PM Sat. Mar. 26

The Boho City Pouch is a functional bag that can be made in any size you want from wrist tote to an over the shoulder style bag. The handles loop through each other for a quick and secure closure. It can be made reversible or have one or more zipper pockets. We will draw your own reusable pattern in class. Fee \$45.



Left Bank Granny Bag

.... with Suzanne

A. 4:30 – 8:30 PM Sat. Apr. 23

This is a roomy lined bag large enough and strong enough for everyday use. It has an inner zipper pocket for safe storage. Side slits allow you to toss in almost anything. It is perfect for shopping or toting things to sewing classes. Fee \$45.



Recommended Skill Levels for Sewing Classes:



Beginner



Confident Beginner



Intermediate



Advanced

The skill level refers to the sewing experience needed to complete the project within each class category; not the overall sewing experience of the student.

Foot of the Month Classes

Monthly Projects with Susan

Learn how to use the many different specialty feet for your machine as you explore each of three different projects this spring. Susan will guide you through the techniques and fun embellishment for each of the three hands-on projects shown below. Fee \$45 per class or \$120 for all three classes.

A. Sweet Heart Pillowcase

4:30 – 8:30 PM Sat. Feb. 13

Create a stunning heirloom pillowcase for your sweetie featuring this fun puffing trim, decorative cording, and a lovely machine stitched shell edging.



B. Embellished Ready to Wear Shirt

4:30 – 8:30 PM Sat. Mar. 12

Join Susan to jazz up a plain ready to wear shirt. You will be using the yarn couching foot and those extra wide decorative stitches on your machine to embellish the shirt. Put a little pizzazz in your style with this fun project.



C. Joe Cool Shopping Bag

4:30 – 8:30 PM Sat. Apr. 9

Everyone needs an extra bag to carry all their important stuff around! This quick and easy tote has great piping and sturdy but simple straps. The bag front is a great place to feature a fun machine embroidered monogram or other design. Join Susan for this fun class and get a good start in making your next successful project. Learn more about your machine and all its accessories with each of these fun Foot on the Month classes with Susan this spring.



Embroidery Classes

Cutwork Rag Quilt with Wendy

A. 9:00 – Noon Fri. Feb. 12 & 26

Take the Flannel Rag Quilt to the next level with your BERNINA embroidery hoop and Cutwork Tool. Embroider a beautiful quilt block and then cut the fringe automatically with your cutwork tool, all in the hoop! Let Wendy show you how to use your BERNINA embroidery machine and Cutwork tool. *Fee \$55.



Mastering Paintwork with Wendy

A. 1:00 – 4:00 PM Sun. Apr. 10

Do you have the BERNINA Paintwork Tool and Designworks Software? What's next, how do you use them? Let Wendy show you how. Discover how much fun these tools can be with your BERNINA embroidery machine. Only Series 8, 7 and 580 machines, please. Fee \$35.



Hawaiian Applique in the Hoop with Wendy

A. 10:00 – 4:00 PM Fri. Apr. 29

Hawaiian Applique can be as easy as 1-2-3. First hoop your background fabric. Second, let your embroidery machine do all the hard work as it creates the applique. Finally, join your squares and make a gorgeous pillow, table runner, or quilt! Wendy will guide you through the process and show you the easy steps to successful applique in the hoop. *Fee \$50.



*Note: Our embroidery classes are intended to help you learn more about your embroidery machine. Students need to have completed their basic machine guide lessons prior to enrolling in our hands-on embroidery classes.

Embroidery Classes

Name Game with Wendy

A. 9:00 – 3:00 PM Sat. May 21

This intricate, scroll-like embroidered alphabet is perfect for tiled lettering or monogramming. It will quickly become your go-to design for creativity. Make stunning decorator pillows and wall hangings, monogram towels, or add initials to your flannel blocks for that next rag quilt. Experiment with different embroidery threads and add crystals for that elegant touch. Join Wendy for this easy class to learn all the tricks! *Fee \$50.



Embroidery Stitch Party with Wendy

A. 1:00 – 4:00 PM	Sunday	Feb. 21
B. 9:00 – Noon	Tuesday	Feb. 23
C. 1:00 – 4:00 PM	Sunday	Mar. 20
D. 9:00 – Noon	Tuesday	Mar. 22
E. 1:00 – 4:00 PM	Sunday	Apr. 17
F. 9:00 – Noon	Tuesday	Apr. 19
G. 1:00 – 4:00 PM	Sunday	May 15
F. 9:00 – Noon	Tuesday	May 17



Thinking about upgrading to machine embroidery? Or want to learn more about your new embroidery machine? Join Wendy each month to make a fun new project with your embroidery machine. You will receive the project kit including the beautiful OESD embroidery design used and step-by-step instructions so you will be able to make more projects later. Plus, you will receive valuable discounts off the complete collection of coordinating designs. Bring your own machine to class or we will provide one. Sign up soon, the number of available machines is limited. Pictured above was our August project. *Fee \$30 per month.



Golden Tapestry with Wendy

A. 9:00 – Noon Thr. Feb. 25, Mar. 24, Apr. 21 & May 26



Create your very own masterpiece! Learn to do stunning large scale embroideries by creating smaller tiled blocks. Wendy will show you how with your embroidery machine and sew much more. *Fee \$75.

Asian Cranes with Robin

A. 1:00 – 4:30 PM Fri. Mar. 11 & Apr. 15



Two graceful cranes soar above cherry blossoms in this beautiful landscape. Combine machine applique in the hoop with



embroidery tiled designs to make this stunning tapestry. Robin will guide you to successful machine embroidery! * Fee \$60.

What a Whirl BOM with Wendy

A. 4:30 – 8:00 PM Sat. Jan. 16, Feb. 20, Mar. 26, Apr. 16, May 21, June 18, July 23, Aug. 20, Sep. 17, Oct. 15 & Nov. 19



If you are new to machine embroidery or quilting in the hoop, this fun new Block of the Month series is the perfect option for you to learn and become more proficient with your embroidery machine. **What a Whirl** will be taught in 10 monthly sessions. You will receive a total of 30 embroidery files for 30 different blocks, 10 coordinating quilt in the hoop designs, a stitch and turn quilt label embroidery file, plus full color step-by-step instructions for making each block, and assembling the quilt. Two different block layouts will be provided. The registration fee is \$60*. Then each month the class and design fee will be \$12. The class will be a hands-on format as desired by the students. We have had a brief introduction session, but it's not too late to join the fun!



Software Classes

Basic Software Applique

Windy Days with Marilyn



A. 1:00 – 4:00 PM Sat.
Feb. 13 & 20

Need a beginning digitizing project to help you learn to use your Premier Ultra or 6D Digitizing embroidery software? Then this class is for you. Make this adorable spring wall hanging and learn to do your own appliqué in the hoop. Join Marilyn for this fun software class to digitize your appliqué patterns. Then easily stitch out the design in your embroidery hoop. We will also include instructions for using the Silhouette Cameo cutter to pre-cut your appliques. No more trimming in the hoop needed! Students must have completed their AQC Premier Ultra or 6D Digitizing embroidery software guide lessons before taking this class. *Fee \$52.

Vintage Valentine Block of the Month

.... with Marilyn



A. 2:00 – 3:00 PM Sat. Mar. 12, Apr. 9, May 14, June 11, July 9, Aug. 13, Sept. 10, Oct. 8, Nov. 12, Dec. 10, Jan. 14, Feb. 11, and Mar. 11



You can become an expert digitizer by joining this block of the month program for the next 13 months. Learn to use Premier Plus Ultra or 6D Premier to digitize this romantic and timeless appliqué quilt. Emphasis will be different from previous

block of the month endeavors where the elements were digitized and then dropped onto a template. In this year's process the digitizing will take place with the entire picture of the block present. Special attention will be placed on using the Majestic hoop for those who have it and on multiple hoopings for those who do not. Additionally, for those who have Premier Plus Ultra and the Silhouette Cameo you will learn how to easily create the appliqué cut files for the cutter during the digitizing process. Or you may elect to cut your own appliques by hand. Students must have completed their Premier Plus Ultra or 6D Digitizing Guide Lessons before beginning this program. The registration fee is \$50 for the pattern and class. Then each month the class will be \$15 per month.

Recommended Skill Levels for Sewing Classes:



Beginner



Confident Beginner



Intermediate



Advanced

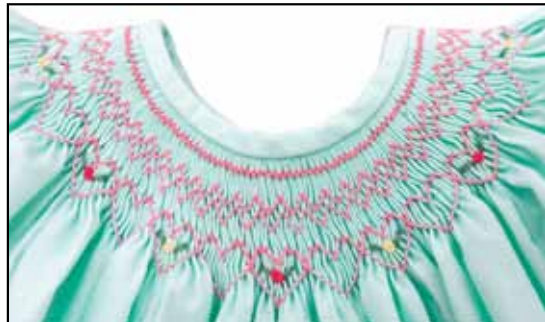
The skill level refers to the sewing experience needed to complete the project within each class category; not the overall sewing experience of the student.

*Note: Our embroidery classes are intended to help you learn more about your embroidery machine. Students need to have completed their basic machine guide lessons prior to enrolling in our hands-on embroidery classes.

Hand Classes

Basic Hand Smocking with Louese

A. 1:00 – 4:00 PM Wed. Mar. 16



Learn the basics of delicate geometric hand smocking used in both children's and adult clothing and heirloom sewing. This class is to get you started with the fundamentals. Fee \$35.

Beyond Basic Smocking with Louese

A. 1:00 – 4:00 PM Wed. May 11

Smockers who have mastered the basic cable and wave stitch will enhance their knowledge by learning more techniques. Students will explore more advanced stitches such as the Feather stitch, Honeycomb, Van Dyke stitch, vertical ladder stitch, wheat stitch, trailing vine and more. Fee \$35.

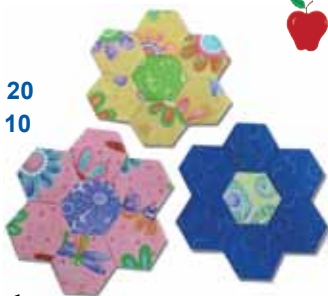
English Paper Piecing

.... with Mavis

A. 10:00 – Noon Sat. Feb. 20

B. 6:30 – 8:30 PM Tue. May 10

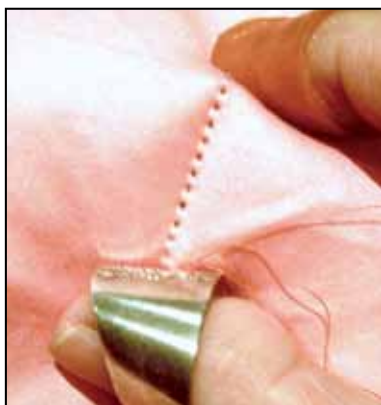
Learn the art of English paper piecing by hand while making little hexagons. Join them together to create these delicate flowers. Mavis will teach you easy techniques to simplify the process. Fee \$30.



Fine Hand Quilting with Mavis

A. 6:30 – 8:30 PM Tue. Mar. 22

Learn how to achieve the perfect hand quilting stitch. Explore the mysteries of choosing perfect quilting designs for your quilt, marking the quilt top, and selecting the proper batting, backing, needles, and thread. Then learn how to layer, baste, and quilt your own masterpiece. Practice kit included. Fee \$35.



Machine Piecing

Appletree Quilting University 100

.... with Millie, Wendy & Marilyn

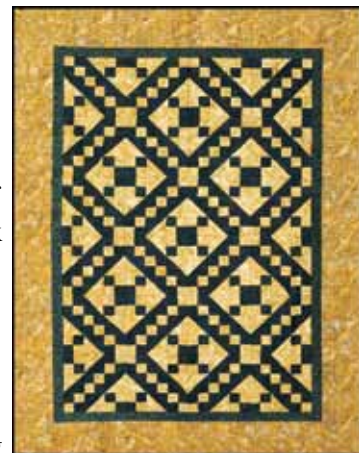
A. 1:00 – 4:00 PM Tue. Feb. 16, 23, Mar. 8, 15, 22, Apr. 5

B. 6:00 – 9:00 PM Tue. Feb. 16, 23, Mar. 8, 15, 22, Apr. 5

If you are new to quilting or would like to learn all the tricks and secrets to successful machine quilting, we have the perfect class for you. Join the teaching staff of Appletree Quilting for this six week course and let us guide you through all aspects of the quilting process including:

1. The secrets of safe and accurate rotary cutting;
2. Accuracy, both in piecing and in pressing the blocks;
3. Setting the quilt blocks together;
4. Adding perfectly mitered borders that don't pucker;
5. Machine quilting the quilt sandwich;
6. Binding your finished quilt and adding your label.

Start with a good foundation. Learn everything you need to make beautiful quilts easily and successfully during this comprehensive Appletree Quilting University course! Students may elect to make a lap quilt, table topper, or table runner. Class notebook included. Fee \$135.



Quilting University 200: Beyond the Basics

.... Millie & Marilyn

A. 1:00 – 4:00 PM Tue. Apr. 19, 26, May 10, 24, 31

B. 6:00 – 9:00 PM Tue. Apr. 19, 26, May 10, 24, 31

If you have mastered quilting basics as taught in our Quilting University Class 100, join us for level 200 to learn more advanced techniques including:

1. Improve accuracy in rotary cutting;
2. Learn precision piecing and pressing;
3. Explore other block elements including flying geese, quarter square triangles, and square in a square;
4. Learn successful techniques for on-point block layout;
5. Add perfectly mitered borders;
6. Learn more advanced quilting and binding techniques.

Build on your good foundation from AQU 100. Students may elect to make a wall hanging, lap quilt, or larger quilt top. Fee \$125.



Beginning Level

Easy Serger Quilt with Millie

A. 9:00 – Noon Wed. Mar. 2 & 9
 B. 9:00 – Noon Sat. Apr. 16 & 30



How fast can you piece this simple quilt top? Select your fabrics, then bring your serger (or basic sewing machine) to class. We will speed piece your quilt top together in no time. Explore easy serger piecing techniques with Millie in this fast, faster, fastest class. Fee \$52.



Magic Flannel Quilt with Wendy

A. 10:00 – 3:00 PM Fri. Apr. 1



This is truly the easiest quilt to make! Select several of our cotton flannels and we will pre-cut and pre-fringe the blocks for you. All you have to do is sew the blocks together! The magic of this project happens when you wash and dry the quilt allowing the fringed seam allowances to bloom. Fee \$75.



Chaos with Wendy

A. 1:00 – 4:00 PM Sun. Apr. 17 & 24



Make some beauty out of the chaos in your life. Let Wendy help you cut, sew, and stack your fabric choices to make an extraordinarily modern quilt out of a handful of ordinary prints. Every quilt turns out sew very different. Have fun stacking and sewing! Fee \$52.



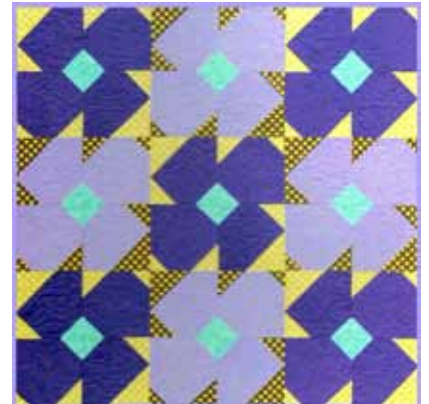
Confident Beginner

Big Blooms with Suzanne

A. 1:00 – 4:00 PM Fri. Feb. 12 & Mar. 4



This is a large block modern quilt made from simple squares that are sewn together diagonally to avoid complicated diagonal pieces. The large flower blocks can feature prints or solids. The design features a pieced back with a strip of the flower blocks. Fee \$52.



Stacked Squares with Wendy

A. 1–4 PM Sat. Mar. 26 & Apr. 2



Stripes can be sew much fun! With this pattern, you use nothing but stripes. Join Wendy for this fun class to get all your stripes in line! A few quick seams and a playful arrangement of blocks will make your quilt dance with texture. Fee \$52.



Buckeye Beauty with Jean

A. 1:00 – 4:00 PM Wed. Mar. 9 & 23
 B. 6:00 – 9:00 PM Fri. Apr. 29 & May 6

Have a scrappy good time while creating this traditional block design from Jelly Roll 2-1/2” strips. The project looks a bit difficult, but it’s sew easy. Fee \$52.



Fresh & Trendy Quilt with Louese

A. 1:00 – 4:00 PM Wed. Apr. 6 & 13

Explore the art of curved piecing while making this beautiful quilt. You will learn how easy it is to cut curved pieces with the Quick Curve Ruler, and how simple and fun curved piecing can be. Fee \$52.



Skyline in the Round

.... with Wendy

A. 10:00 – 4 PM Fri. Apr. 8

Create your very own beautiful Skyline in the round with this fun class. Wendy will help you construct your buildings with the help of the 10° Wedge Ruler and Hoffman's digitally printed fabric. Fee \$50.



Machine Applique

Basic Applique with Susan

A. 6:00 – 9:00 PM Fri. Feb. 19

B. 9:00 – Noon Thr. Mar. 17

Sun Bonnet Sue is an old favorite that's perfect for a beginner appliqué project. Learn the basics of machine appliqué using a paperback fusible and a variety of your decorative stitches on your machine. One quick design and you'll be hooked. Learn the secrets of easy machine applique with Susan! Fee \$32.



Intermediate Level

Metro Medallion with Louese

A. 1:00 – 4:00 PM

Wed. Feb. 10 & 17

Gentle curved piecing gives this stunning quilt an air of mystique. Join Louese to quickly cut your curved pieces with the Quick Curve ruler. Then see how easily you can do successful curved piecing. Create a world class masterpiece! Fee \$52.



Chopsticks with Jean

A. 1:00 – 4:00 PM

Wed. Apr. 20 & May 4

Large and small triangles weave a festive Asian flair with this crisscross design. What a perfect quilt for a sushi picnic, you'll want to pick up Chopsticks and dive right in! This is another wonderful contemporary quilt from Jaybird Quilts and the 60° triangle ruler. Select a collection of fun prints from today's designers and create your very own Chopsticks quilt with Jean, one of our master quilt makers. Fee \$52.



Paper Piecing

Paper Pieced Leaves with Helen

A. 10:00 – 4:00 PM Fri. Mar. 11

Join Helen for this excellent introduction to fine paper piecing. You will learn the easy freezer paper technique for paper-less paper piecing. Your class project will be this lovely leaf design from Judy Niemeyer. Whether you make them as placemats or wall hangings these stunning leaves will be magnificent. Fee \$50.



Bali Bed Runner with Helen

A. 1:00 – 4:00 PM Sun. Mar. 6, Apr. 3 & May 1



Let Helen take you to the next level of paper piecing. You will enhance your skills for using the easy freezer paper technique for paper-less paper piecing while making this exquisite Judy Niemeyer bed runner. This class is for the more advanced paper piecing quilter. Fee \$65.

Quilt Finishing Classes

Machine Quilting, Plus! with Marilyn

A. 10:00 – 4:00 PM Sat. Apr. 30



It's not a quilt until it's quilted! Join Marilyn to learn basic machine quilting techniques. Learn how to layer the quilt sandwich and quilt it with stitch-in-the-ditch and straight line quilting. If you have a programmable computerized machine, Marilyn will show you how to do mock hand quilting easily by machine. Then, if you have an embroidery machine, explore computerized quilting in the hoop. Fee \$50.

Perfect Quilt Binding with Marilyn

A. 1:00 – 4:00 PM Tue. Apr. 5

B. 6:00 – 9:00 PM Tue. Apr. 5



Is your quilt binding lumpy and uneven with rounded corners and poor miters? Many prize worthy quilts have failed due to shoddy binding. Learn the basic techniques of applying perfect quilt binding with either straight grain or bias strips. Master continuous bias binding and precise mitered corners on both the front and back sides. Fee \$32.



Recommended Skill Levels for Sewing Classes:



Beginner



Confident Beginner



Intermediate



Advanced

The skill level refers to the sewing experience needed to complete the project within each class category; not the overall sewing experience of the student.

Free Motion Quilting with Helen

A. 10:00 – 4:00 PM Sat. Apr. 23



Spend a day with Helen to explore basic free motion quilting techniques. You can start with a small wall hanging or fun panel for your class project. Learn the basic motions and skills needed to let your stitching flow smoothly and effortlessly. Soon you too will be doing amazing free motion designs. Fee \$50.

Advanced Free Motion Quilting

.... with Helen

A. 10:00 – 4:00 PM Fri. May 13



Take your free motion skills to the next level in this all day class with Helen. Start with a free motion panel and learn to create designs for quilt blocks, borders, and more. Practice feather quilting, curves, straight lines, and various stippling patterns as you learn how to add quilt designs to your project. Fee \$50.

Open Sewing Classes

Make It Mondays - Daytime with Wendy

10:00 – 5:00 PM Mon. Feb. 1, 8, 15, 22, 29,
Mar. 7, 14, 21, 28,
Apr. 4, 11, 18, 25,
May 2, 9, 16, 23



Do you need more sewing time to get all those unfinished projects completed? Do you need help, motivation, inspiration, or even your very own cheering section?



Then join us for our Make It Monday Sew-in's to finish old projects or start new ones. Bring any sewing, quilting, or embroidery project, your sewing machine or serger, and a sack lunch. Join new and soon to be good friends to stitch the day away! Plan to sew, shop, laugh, and have fun! Join us for only \$8 per session. Register for 12 sessions and get the 13th session free!

Give Back Sew Days

Give Back Fridays with Beth & Staff

A. 10:00 – 5:00 PM Fri. Feb. 19, Mar. 25, Apr. 15, & May 20



Join Beth and the AQC staff one Friday a month to donate your time and talents for worthy causes in the community. We will support a different group or charity each quarter. This quarter we will be making kennel quilts for the Columbia Humane Society and Second Chance.

Please join us by giving an hour or a day to give back to the community. No special skills are required, just a willingness to help. Appletree Quilting will provide the space, machines, fabric, sewing guidance, plus snacks and chocolate, of course! If you have any clean usable fabric to donate for our causes, we would greatly appreciate it. Bless you.

No charge for this event, just free fun and fellowship plus our thanks and God's blessings!

MACHINE LOVE MEET PET LOVE.

BUY A B 350 SE BEST FRIEND
AND BERNINA WILL MAKE A DONATION
TO THE PETFINDER FOUNDATION.



made to create **BERNINA**

Get a Great BERNINA Machine and HELP a Few Furry Friends, Too!

With every purchase of a **B350 Special Edition Best Friend**, BERNINA will donate a percentage of each sale to the **Petfinder Foundation**, an organization who cares for more than 300,000 homeless pets at any given time and assists shelters in saving the lives of pets.

The Special Edition Best Friend, added to the BERNINA 3 series line, is paw-some! Standard accessories for the B350 SE Best Friend includes the:

- Free Hand System,
- Quilting Foot,
- Full Shank Presser Feet,
- Plus, the Pet Paws Faceplate Design.

This machine is great for quilters and sewists alike. As your interests and skills grow, the B350 is easily upgraded with lots of optional accessories.

Help create a little comfort for a shelter pet by participating in our Give Back Sew Days this spring. We will be sewing kennel quilts for pets who need them at the Columbia Humane Society and Second Chance.

Machine Guide Lessons

If you purchased your Viking or BERNINA machine or software from AQC, your guide lessons are FREE and you may repeat them as often as you like (space permitting). If you purchased your machine elsewhere and would like to take your owner's guide lessons with Appletree Quilting, you must register for the complete set of lessons provided for your particular machine or software:

If the class meets: one time, the fee will be \$150;
two times, the fee will be \$300;
three times, the fee will be \$450;
or four times, the fee will be \$600.

Please register for guide classes at least one week prior to the beginning of a class series.

VIKING Guide Lessons

Machine Guide Lessons: Please bring your sewing machine or serger, manual, foot control, power cord, and all the accessories to class. Embroidery machine owners do not need to bring their embroidery units to class until the third week.

Lessons for Basic Viking Machines

- A. 6:30 – 9:00 PM Tue. Feb. 2
- B. 1:00 – 3:30 PM Tue. Mar. 1
- C. 6:30 – 9:00 PM Tue. Apr. 5
- D. 1:00 – 3:30 PM Tue. May 3
- E. 6:30 – 9:00 PM Tue. June 7

This class is for owners of basic Viking sewing machines including 100Q, Eden Rose 250M, Tribute 140M, Emerald 203, 183, 118 and 116, and the E20 or equivalent. This class will cover basic machine operation and maintenance.

Lessons for Computerized Viking Machines

- A. 6:30 – 9:00 PM Tue. Feb. 9 & 16
- B. 1:00 – 3:30 PM Tue. Mar. 8 & 15
- C. 6:30 – 9:00 PM Tue. Apr. 12 & 19
- D. 1:00 – 3:30 PM Tue. May 10 & 17
- E. 6:30 – 9:00 PM Tue. June 14 & 21

This class is for owners of computerized Viking sewing machines including Sapphires, Opals, Eden Rose 250C, Tribute 140C, or equivalent. The first class of each session will cover basic machine operation and maintenance. The second class will cover additional features and programming.

Lessons for Viking Embroidery Machines

- A. 6:30 – 9:00 PM Thr. Feb. 4, 11, 18, 25
- B. 1:00 – 3:30 PM Thr. Mar. 3, 10, 17, 24
- C. 6:30 – 9:00 PM Thr. Apr. 7, 14, 21, 28
- D. 1:00 – 3:30 PM Thr. May 5, 12, 19, 26
- E. 6:30 – 9:00 PM Tue. June 2, 9, 16, 23

This class is for owners of Viking embroidery machines including the Designer Diamond, Designer Ruby, Designer Topaz, or Designer SE. The first two classes of each session will cover sewing machine operation, techniques, and maintenance. The third class will cover machine embroidery

techniques. The fourth class will explore design positioning, on screen customizing, and computer connectivity.

Lessons for Viking Epic

- A. 1:00 – 4:00 PM Sun. Feb. 14, 21, 28*
 - B. 1:00 – 4:00 PM Sun. Mar. 13*, 20, April 10
 - C. 1:00 – 4:00 PM Sun. May 15, 22, June 5
- *Special Time for Feb. 28 & Mar. 13: 4:30 – 7:30 PM

This class is for owners of the new top of the line Viking Epic embroidery machine.

Viking Platinum, HandiQuilter & Serger Lessons

By special appointment only. If you purchased your longarm quilter or serger from AQC, your guide lessons are free. If you purchased elsewhere, there will be at a charge of \$75 per hour with a one hour minimum.

Viking Software Guide Lessons: Please bring your laptop with the current software installed and your dongle to class. If you need assistance installing your software, please make a special appointment prior to the class dates. We do not have class time for installation.

Premier Plus & 6D Embroidery

- A. 2:00 – 4:00 PM Sun. Feb. 7 & 28

Premier Plus & 6D Editor

- A. 2:00 – 4:00 PM Sun. Mar. 6 & 13

Premier Plus & 6D Cross Stitch

- A. 2:00 – 4:00 PM Sun. Apr. 3

Premier Plus Ultra & 6D Design Creator

- A. 2:00 – 4:00 PM Sun. Apr. 17 & 24

BERNINA Guide Lessons

Machine Guide Lessons: Please bring your sewing machine or serger, manual, foot control, power cord, and all the accessories to class. Embroidery machine owners do not need to bring their embroidery units to class until the third and fourth week.

Lessons for Bernettes and BERNINA Sewing Machines through the 5 Series

- A. 1:00 – 3:30 PM Tue. Feb. 2, 9, 16
- B. 6:30 – 9:00 PM Tue. Mar. 1, 8, 15
- C. 1:00 – 3:30 PM Tue. Apr. 5, 12, 19
- D. 6:30 – 9:00 PM Tue. May 3, 10, 17
- E. 1:00 – 3:30 PM Tue. June 7, 14, 21

This class is for owners of any current Bernette or BERNINA sewing machines including Bernette Seville, London 5, Chicago 5 & 7, and BERNINA 300 and 500 series models purchased from Appletree Quilting Center.

Class #1: Basic machine operation and maintenance for all machines in this category.

Class #2: Additional features and programming for BERNINA 300 and 500 series models.

Class #3: Embroidery features for Chicago 7 and BERNINA 560 (if applicable) and 580.

BERNINA 7 & 8 Series Embroidery Machines

- A. 1:00 – 3:30 PM Thr. Feb. 4, 11, 18, 25
- B. 6:30 – 9:00 PM Thr. Mar. 3, 10, 17, 24
- C. 1:00 – 3:30 PM Thr. Apr. 7, 14, 21, 28
- D. 6:30 – 9:00 PM Thr. May 5, 12, 19, 26
- E. 1:00 – 3:30 PM Thr. June 2, 9, 16, 23

This class is for owners of any current BERNINA series 7 or 8 sewing machines including the 710, 740, 750, 770, 780, 790, 880, and 880 Select purchased from AQC.

Class #1: Basic machine operation and maintenance for all machines in this category.

Class #2: Additional features and programming for all machines in this category.

Class #3: Additional features and programming for all machines in this category.

Plus, introduction to embroidery features for the BERNINA 750, 770 (if applicable), 780, 790, 880, and 880 Select.

Class #4: Additional embroidery features for BERNINA 750, 770, 780, 790, 880 and 880 Select.

If you have purchased a 750 or 770 with embroidery, 780, 790, 880, or 880 Select, please bring your embroidery unit to class #3 and class #4.

Class & Special Event Policies

Your class fee is due at registration. This guarantees your place in class. Class size is limited. So please register early. Sometimes a great class is cancelled because people wait to the last minute to register. Each class needs a minimum enrollment at least three days before it begins.

Full refunds or store credits will be issued only if the class is cancelled by AQC due to bad weather or insufficient registration. Any class cancellation made by the student must be received 7 days before the class in order to receive a store credit less a \$5 processing fee; no refunds will be given. Credits or refunds are not available on special events.

You will receive a class supply list upon registration. Students will receive a 15% discount off all nonsale fabrics and notions for class supplies. Please inform the sales personnel that you are buying supplies for a class. We truly appreciate your support when purchasing class supplies only from Appletree Quilting Center. No other quilt shop in the mid-Missouri area offers you the quality and selection of classes and fabrics from which to choose. Bring your own sewing machine to class or you may reserve one of our regular class room machines at no additional charge.

- Please be prompt! Everyone's time is valuable.**
- Please do not wear heavy perfume or cologne to class.**
- Please turn cell phones off or to vibrate mode.**
- Please come to class prepared.**
- Please call if you are unable to attend a class session.**

Golden Apple Clubs

Join us for one or both of our two clubs to learn lots of new sewing, quilting, embroidery, and software techniques. Plus, share great ideas, motivation, tips, problems, and laughter with all your sewing friends at Appletree Quilting Center.

VIKING Club

Meets Monthly on the second Saturday at 10:00 AM
Feb. 13, Mar. 12, Apr. 9, May 14, Jun. 11, Jul. 9, Aug. 13,
Sep. 10, Oct. 8, Nov. 12 & Dec. 10

All customers of AQC are welcome to join regardless of the brand of machine you own. Appletree Viking Club dues are \$75 for the year. Members receive a 10% discount on all nonsale fabric and notion purchases. The discount alone is worth the cost of membership!

BERNINA Club

Meets Bi-Monthly on the first Saturday at 10:00 AM
Feb. 6, Apr. 2, Jun. 4, Aug. 6, Oct. 1 & Dec. 3

All customers of AQC are welcome to join regardless of the brand of machine you own. Appletree BERNINA Club dues are \$40 for the year. Members receive a 10% discount on all nonsale fabric and notion purchases. Join both Viking Club and BERNINA Club for only \$100.

Mail Registration and Class Fee(s) to:

Appletree Quilting Center

2541 Bernadette Dr.
 Columbia, MO 65203
 446-2655 1-800-269-2655
sewing@appletreequilting.com

Name _____

Address _____

City _____

State _____

Zip _____

Daytime Phone _____

/

Home Phone _____

/

Email _____

Title

Section/Dates

Fee

Method of payment: Check MC Visa Discover

Credit Card No. _____

Exp. Date _____

Security Code _____

Signature _____

BERNINA

Husqvarna VIKING



Appletree Quilting Center

Web Site & Online Store:
www.appletreequilting.com

2541 Bernadette Dr.

(North of Columbia Mall)

Columbia, MO 65203

(573) 446-2655

1-800-269-2655

**OPEN 7 Days a
Week for Your
Convenience!**

10 – 5:30 pm Mon. – Thr.
10 – 5:00 pm Fri. & Sat.
1 – 4:00 pm Sundays



Appletree Quilting Center

www.appletreequilting.com



Adopt a Lightly Used Embroidery Machine & SAVE!



Viking Designer Diamond deLuxe

SAVE on a Lightly Used Designer Diamond

Adoption Special Price:

\$4999

Price New was \$9999

This great machine has been thoroughly serviced and updated. It is in excellent condition and comes with hands-on Guide Lessons and AQC in-house warranty.



Viking Designer Diamond Royale

SAVE on a Lightly Used Designer Diamond

Adoption Special Price:

\$5999

Price New was \$10,999

This amazing model has been thoroughly serviced and updated. It is in excellent condition and comes with hands-on Guide Lessons and AQC in-house warranty.