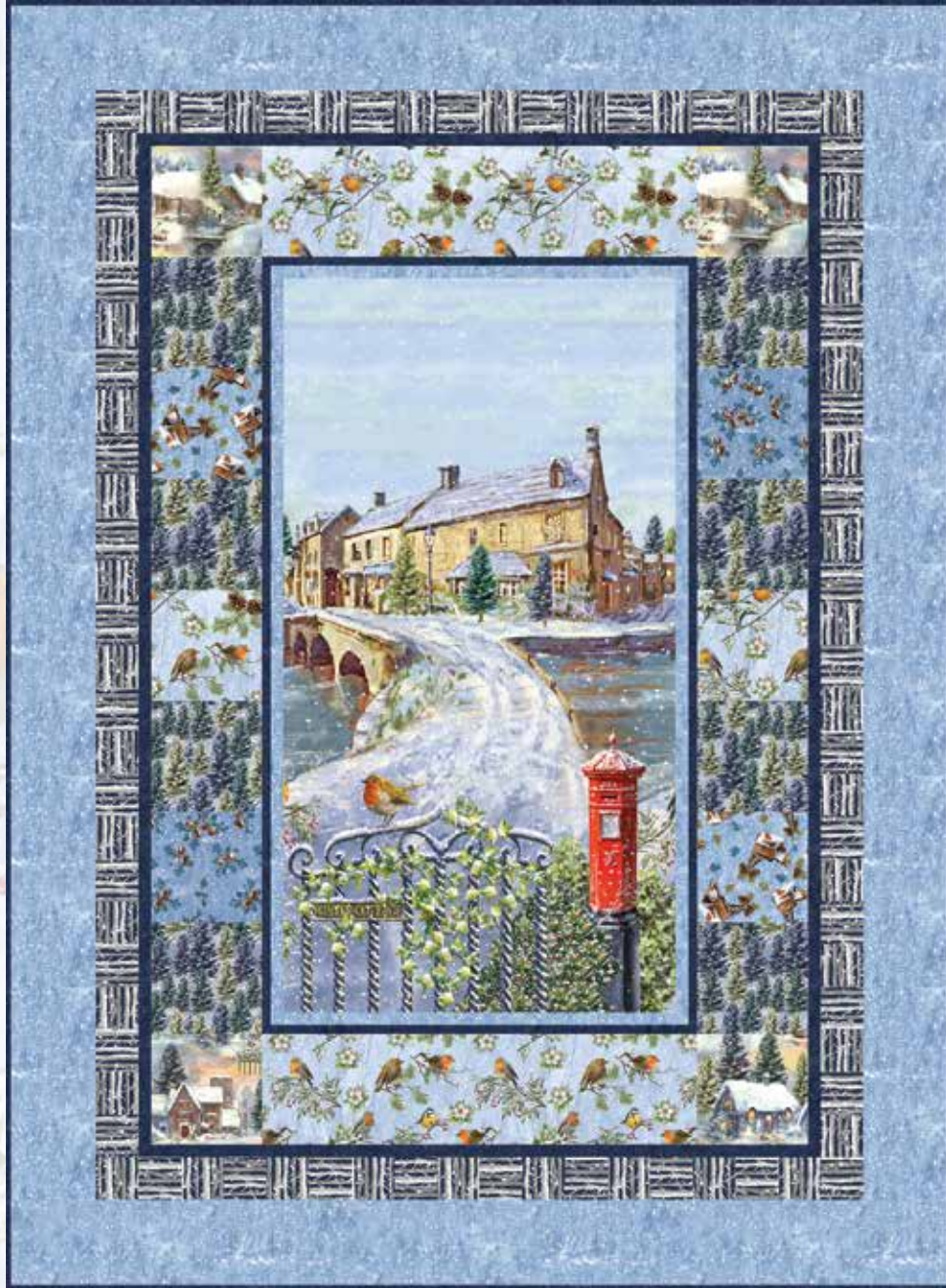


Winter Cottage

• A Free Project Sheet •
• NOT FOR RESALE •

By Marcello Corti



Quilt Design by Heidi Pridemore

Quilt 1

Skill Level: Beginner

 Henry Glass & Co., Inc.



facebook

Finished Quilt Size: 55" x 75"
49 West 37th Street, New York, NY 10018
tel: 212-686-5194 fax: 212-532-3525
Toll Free: 800-294-9495
www.henryglassfabrics.net

Please check our website for pattern updates before starting this project.

WINTER COTTAGE Quilt 1

Fabrics in the Collection



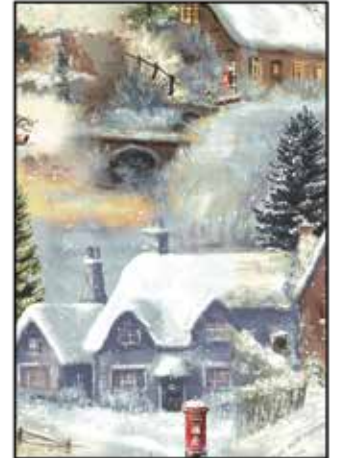
Winter Scenery Banner Panel
Blue – 1715P-11



Scenic Blocks - Navy
1716-77



Winter Birds - Blue
1717-11



Village Scenic - Blue
1718-11



Mailbox and Birds - Ice Blue
1719-17



Pine Tree - Silver
1720-91



Pine Cones - Ice Blue
1721-17



Birch Trees - Navy
1722-77



Texture - Ice Blue
1723-17



Texture - Navy
1723-77

WINTER COTTAGE

Quilt 1

Materials

1 panel	Winter Scenery Banner Panel - Blue (A)	1715P-11
1 ½ yards	Texture - Ice Blue (B)	1723-17
1 yard	Texture - Navy (C)	1723-77*
½ yard	Winter Birds - Blue (D)	1717-11
½ yard	Village Scenic - Blue (E)	1718-11
½ yard	Pine Tree - Silver (F)	1720-91
¼ yard	Mailbox and Birds - Ice Blue (G)	1719-17
¼ yard	Pine Cones - Ice Blue (H)	1721-17
⅔ yard	Birch Trees - Navy (I)	1722-77
4 ¾ yards	Village Scenic - Blue (Backing)	1718-11

*Includes binding

Cutting Instructions

Please note: all strips are cut across the width of fabric (WOF) from selvage to selvage edge unless otherwise noted.

From the Winter Scenery Banner Panel - Blue (A):

- Fussy cut (1) 23 ½" x 43 ½" panel.

From the Texture - Ice Blue (B), cut:

- (4) 5 ½" x WOF strips. Sew the strips together end to end with diagonal seams and cut (2) 5 ½" x 65 ½" strips.
- (3) 5 ½" x WOF strips. Sew the strips together end to end with diagonal seams and cut (2) 5 ½" x 55 ½" strips.
- (3) 2" x WOF strips. Sew the strips together end to end with diagonal seams and cut (2) 2" x 43 ½" strips.
- (2) 2" x 26 ½" WOF strips.

From the Texture - Navy (C), cut:

- (7) 2 ½" x WOF strips for the binding.
- (3) 1 ¼" x WOF strips. Sew the strips together end to end with diagonal seams and cut (2) 1 ¼" x 59" strips.
- (2) 1 ¼" x 40 ½" WOF strips.
- (3) 1" x WOF strips. Sew the strips together end to end with diagonal seams and cut (2) 1" x 45" strips.
- (2) 1" x 26" WOF strips.

From the Winter Birds - Blue (D), cut:

- (1) 7" x WOF strip. Sub-cut (1) 7" x 26" strip and (2) 7" squares.
- (1) 7" x 26" WOF strip.

From the Village Scenic - Blue (E):

- Fussy cut (4) 7" squares each centered on a cottage.

From the Pine Tree - Silver (F), cut:

- (2) 7" x WOF strips. Sub-cut (8) 7" squares.

From the Mailbox and Birds - Ice Blue (G), cut:

- (1) 7" x WOF strips. Sub-cut (2) 7" squares.

From the Pine Cones - Ice Blue (H), cut:

- (1) 7" x WOF strips. Sub-cut (2) 7" squares.

From the Birch Trees - Navy (I), cut:

- (6) 3" x WOF strips. Sub-cut (84) 3" squares.

From the Village Scenic - Blue (Backing), cut:

- (2) 83" x WOF strips for the backing. Sew the strips together and trim to make the 63" x 83" back.

Block Assembly

Note: The arrows in the figures represent the fabric print direction. Pay attention to the orientation of the fabric and components when assembling the blocks.

1. Sew (1) 2" x 43 ½" Fabric B strip to each side of the 23 ½" x 43 ½" Fabric A panel. Sew (1) 2" x 26 ½" Fabric B strip to the top and to the bottom of the Fabric A panel. Trim the block to measure 25" x 45" to make the Center Block (Fig. 1).

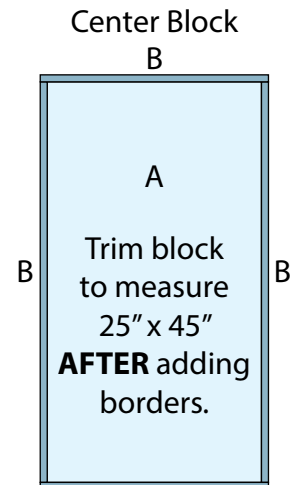


Fig. 1 B

2. Sew (1) 7" Fabric F square, (1) 7" Fabric G square, (1) 7" Fabric F square, (1) 7" Fabric D square, (1) 7" Fabric F square, (1) 7" Fabric H square and (1) 7" Fabric F square together from top to bottom and in that order to make the Inner Left Border (Fig. 2).

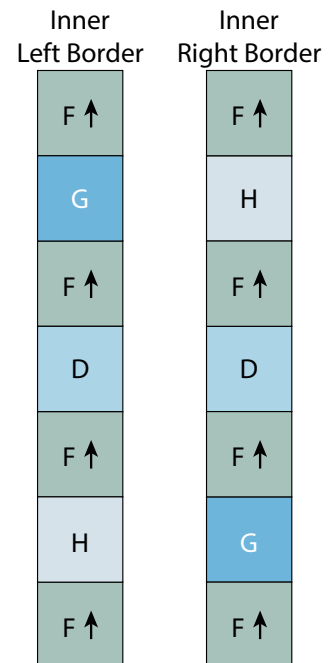


Fig. 2

Fig. 3

3. Sew (1) 7" Fabric F square, (1) 7" Fabric H square, (1) 7" Fabric F square, (1) 7" Fabric D square, (1) 7" Fabric F square, (1) 7" Fabric G square and (1) 7" Fabric F square together from top to bottom and in that order to make the Inner Right Border (Fig. 3).

4. Sew (1) 7" Fabric E square to each end of (1) 7" x 26" Fabric D strip to make the Inner Top Border (Fig. 4). Repeat to make the Inner Bottom Border.

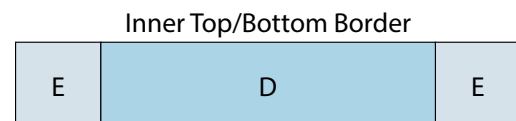


Fig. 4

5. Follow Figure 5 for the fabric orientation and sew (24) 3" Fabric I squares together to make the Outer Left Border.

Outer Left Border Outer Right Border

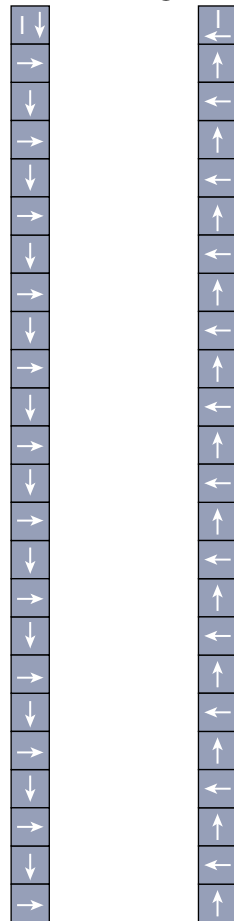


Fig. 5

Fig. 6

6. Follow Figure 6 for the fabric orientation and sew (24) 3" Fabric I squares together to make the Outer Right Border.

7. Follow Figure 7 for the fabric orientation and sew (18) 3" Fabric I squares together to make the Outer Top Border.

8. Follow Figure 8 for the fabric orientation and sew (18) 3" Fabric I squares together to make the Outer Bottom Border.

Outer Top Border



Fig. 7

Outer Bottom Border



Fig. 8

Quilt Top Assembly

(Follow the Quilt Layout while assembling the quilt top.)

9. Sew (1) 1" x 45" Fabric C strip to each side of the Center Block. Sew (1) 1" x 26" Fabric C strip to the top and to the bottom of the Center Block.

10. Sew the Inner Side, Top and Bottom Borders to the Center Block.

11. Sew (1) 1 1/4" x 59" Fabric C strip to each side of the Center Block. Sew (1) 1 1/4" x 40 1/2" Fabric C strip to the top and to the bottom of the Center Block.

12. Sew the Outer Side, Top and Bottom Borders to the Center Block.

13. Sew (1) 5 1/2" x 65 1/2" Fabric B strip to each side of the Center Block. Sew (1) 5 1/2" x 55 1/2" Fabric B strip to the top and to the bottom of the Center Block to make the quilt top.

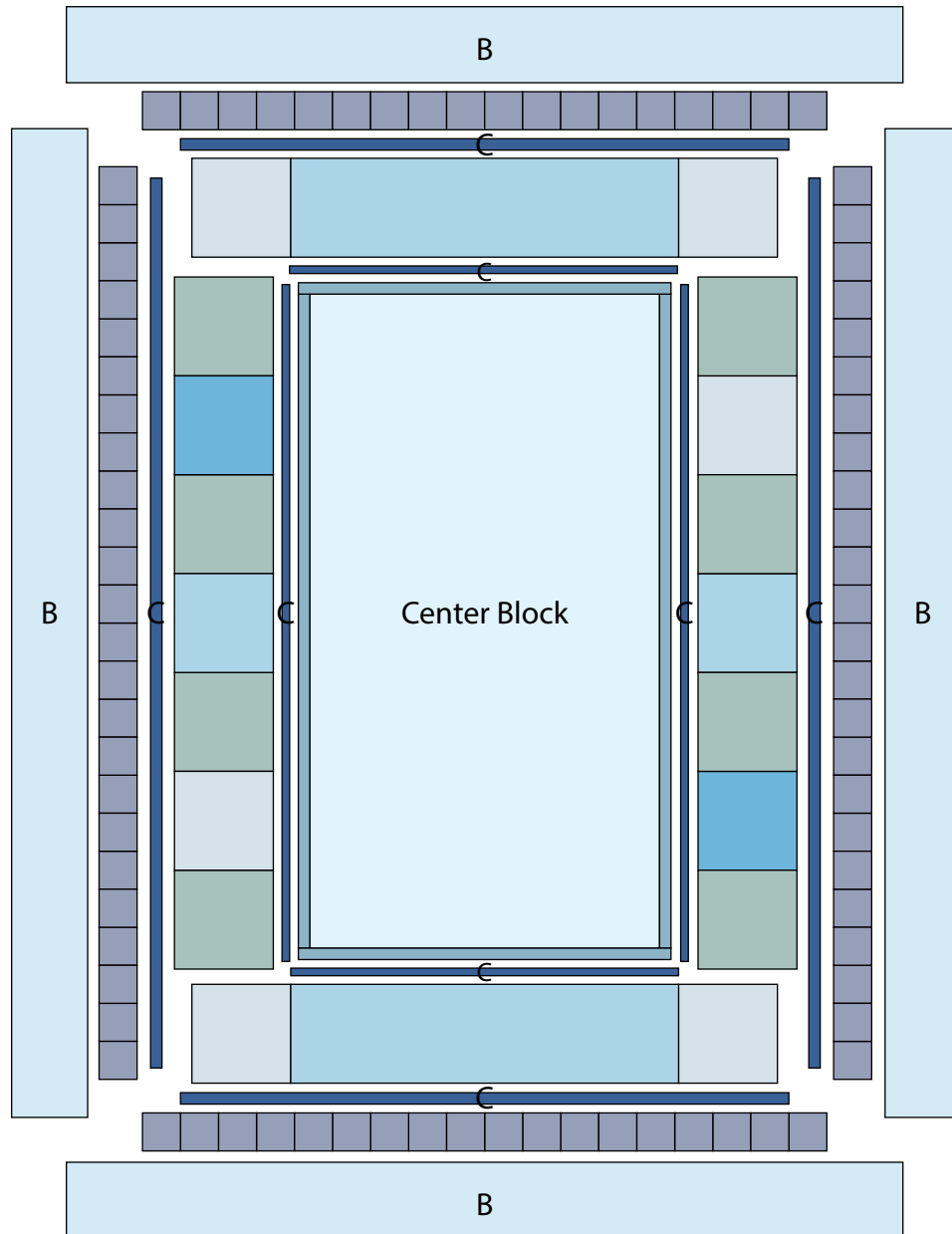
14. Layer and quilt as desired.

15. Sew the (7) 2 1/2" x WOF Fabric C strips together, end to end with 45-degree seams, to make the binding. Fold this long strip in half lengthwise with wrong sides together and press.

16. Bind as desired.

WINTER COTTAGE

Quilt 1



Quilt Layout

Every effort has been made to ensure that all projects are error free. All the information is presented in good faith, however no warranty can be given nor results guaranteed as we have no control over the execution of instructions. Therefore, we assume no responsibility for the use of this information or damages that may occur as a result. When errors are brought to our attention, we make every effort to correct and post a revision as soon as possible. Please make sure to check www.henryglassfabrics.net for pattern updates prior to starting the project. We also recommend that you test the project prior to cutting for kits. Finally, all free projects are intended to remain free to you and are not for resale.