

# Tall Tales

Quilt designed by Sue Harvey and Sandy Boobar of Pine Tree Country Quilts  
Finished size is approximately 42" x 49"



## Yardages and Cutting

*Note: WOF means width of fabric from selvedge edge to selvedge edge. Remove as little fabric as possible when trimming off selvedge edges.*

### 1 yard Zoe panel, SB20255-280

- 1 rectangle 15 1/2" x 22" from center motif
- 2 small corner pieces, cut 6 1/2" wide with giraffe head centered. Then cut 1/4" above and below the inside edge of the black outline at the top and bottom.
- 2 long rectangle pieces, cut 1/4" above the inside edge of the black outline at the top and then cut 5 1/2" tall. Cut 10 1/2" wide with motif centered.

### 1/2 yard aqua bees, SB20197-930

- 1 strip 6 1/2" x WOF; cut into (4) 6 1/2" squares and (4) 2" x 6 1/2" rectangles.
- 3 strips 2 1/2" x WOF; cut into 2 each 22" and 15 1/2" strips and (4) 2 1/2" squares.

### 5/8 yard brown spots, SB20258-280

- 2 strips 7 1/4" x WOF; cut into (6) 7 1/4" squares and (4) 3 1/2" squares. Then cut the 7 1/4" squares twice diagonally to make 24 triangles.

### 1/2 yard green swirl, SB20103-830

- 3 strips 3 1/2" x WOF; cut into (28) 3 1/2" squares.
- 1 strip 1 1/2" x WOF; cut (2) 1 1/2" x 6 1/2". Trim remainder of strip to 1" wide and cut into (2) 1" x 10 1/2" strips.

### 1 1/4 yards orange swirl, SB20103-430

- 5 strips 1 1/2" x WOF; cut into (4) 1 1/2" x 27 1/2" strips and (18) 1 1/2" x 3 1/2" strips.
- 1 strip 6 1/2" x WOF; cut into (16) 1 1/2" x 6 1/2" sashing strips.
- 4 strips 1 1/2" x WOF; trim each to 42 1/2".
- 5 strips 2 1/4" x WOF for binding.

### 1/2 yard hearts, SB20208-330

- 2 strips 6 1/2" x WOF; cut into (8) 6 1/2" squares.

### 1 yard yellow swirl, SB20053-310

- 1 strip 1 1/4" x WOF; cut into (2) 1 1/4" x 20 1/2" strips.
- 2 strips 1" x WOF; cut into (2) 1" x 22" strips, (2) 1" x 10 1/2" strips and (4) 1" x 2 1/2" pieces.
- 1 strip 1 1/2" x WOF; cut into (2) 1 1/2" x 6 1/2" strips.
- 3 strips 3 7/8" x WOF; cut into (22) 3 7/8" squares, then cut in half diagonally to make 44 triangles.
- 3 strips 3 1/2" x WOF; cut into (36) 3 1/2" squares.

### 3 1/3 yards hearts for backing, SB20208-330

- 2 pieces 57" long for backing

## Piecing the Units

*Note: Use a 1/4" seam allowance for all stitching.*

1. Sew a 1" x 10 1/2" yellow strip to the top of each long panel rectangle. Press seam toward the strip. Stitch a 1" x 10 1/2" green strip to the bottom of each rectangle. Press seam toward the strip. Add a 2" x 6 1/2" blue bees rectangle to each end to complete (2) 6 1/2" x 13 1/2" units. Press seams toward the blue rectangles.

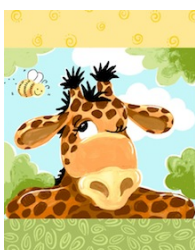


Make 2

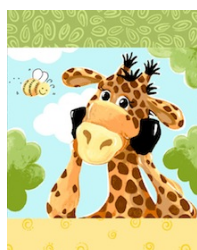
2. Referring to the diagrams on the next page, stitch a 1 1/2" x 6 1/2" yellow strip to the top of one small panel piece and to the bottom of the other small panel. Press seams toward the strips. Stitch a 1 1/2" x 6 1/2" green strip to



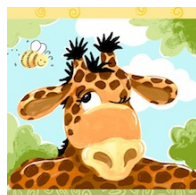
the bottom or top of the panel pieces. Press seams toward the strips. Trim the pieced units to  $6\frac{1}{2}'' \times 6\frac{1}{2}''$ , keeping the panel piece centered.



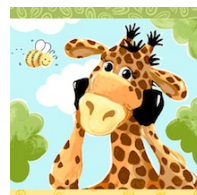
**Trim to  $6\frac{1}{2}'' \times 6\frac{1}{2}''$**



**Top Small Panel**

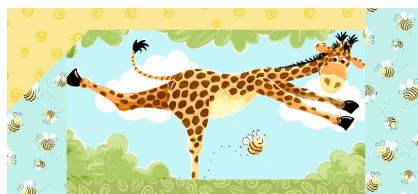
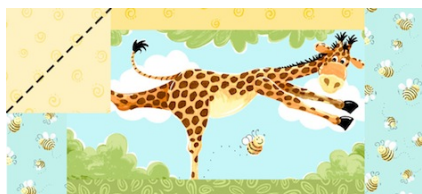


**Bottom Small Panel**

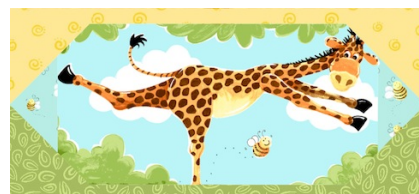


3. Draw a diagonal line on the wrong side of the  $3\frac{1}{2}''$  yellow and green squares.

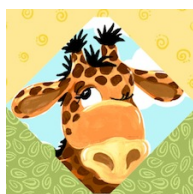
4. Place a marked yellow square on 1 top corner of the panel rectangle units. Sew on the line. Trim seam allowance  $\frac{1}{4}''$  out from the stitching line. Press the yellow triangle open. Repeat on the remaining top corner. Repeat with marked green squares on the bottom corners to complete 2 side units.



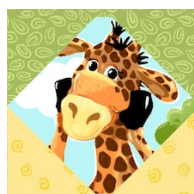
**Side Unit — Make 2**



5. Repeat with yellow and green squares and the small panel squares, paying careful attention to placement of the yellow and green triangles to make 1 each top and bottom unit.



**Top Unit**



**Bottom Unit**

6. Repeat with the  $6\frac{1}{2}''$  hearts squares to make 8 heart units. Repeat with the  $6\frac{1}{2}''$  blue bees squares to make 4 bee units, except use 3 yellow squares and 1 green square for each unit.



**Heart Unit — Make 8**



**Bee Unit — Make 4**

7. Sew a  $3\frac{7}{8}''$  yellow triangle to 1 short side of a  $7\frac{1}{4}''$  brown spots triangle. Press seam toward the yellow triangle. Repeat on the remaining short side to complete (1)  $3\frac{1}{2}'' \times 6\frac{1}{2}''$  triangle unit. Repeat to make 22 triangle units. Set aside 2 remaining brown spots triangles for another project.



**Triangle Unit — Make 22**

8. Stitch a 1" x 22" yellow strip and then a 2 1/2" x 22" blue bees strip to the long sides of the large center panel. Press seams away from the panel. Add a 1 1/4" x 20 1/2" yellow strip to the top and bottom. Press seams toward the yellow strips.

9. Sew a 1" x 2 1/2" yellow piece to each end of the 2 1/2" x 15 1/2" blue bees strips. Add a 2 1/2" blue bees square to each end to make (2) 2 1/2" x 20 1/2" strips. Stitch the strips to the top and bottom of the large panel unit to complete the 20 1/2" x 27 1/2" center unit. Press seams toward the large panel unit.

## Completing the Quilt

***Note:** Refer to the Exploded Quilt Diagram on the last page throughout the following steps.*

1. Stitch an orange swirl sashing strip to each end of each panel side unit and add a heart unit to each end to complete (2) 6 1/2" x 27 1/2" side panel strips. Press seams toward the sashing strips. ***Note:** Continue to press all seams toward the orange swirl strips.*

2. Sew 4 triangle units alternately together with (3) 1 1/2" x 3 1/2" orange spots strips to make a 3 1/2" x 27 1/2" side triangle strip. Press. Repeat to make a second side triangle strip.

3. Stitch a 1 1/2" x 27 1/2" orange swirl strip to opposite long sides of the side panel strips. Press. Add the triangle strips to complete (2) 11 1/2" x 27 1/2" side sections. Press.

4. Sew the side sections to the long sides of the center unit to complete the 42 1/2" x 27 1/2" center section. Press seams toward the side sections.

5. Stitch 2 triangle units, 2 bee units, 2 heart units and the top panel unit alternately together with 6 orange swirl sashing strips to make the 6 1/2" x 42 1/2" top row. Press. Repeat to make the bottom row, paying careful attention to the positioning of the units to place the green corners at the top of the row.

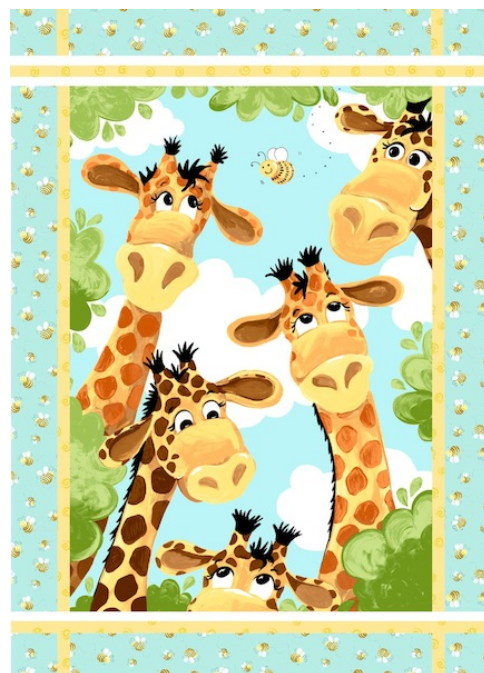
6. Sew (2) 3 1/2" brown spots squares and 5 triangle units alternately together with (6) 1 1/2" x 3 1/2" orange swirl strips to make a 3 1/2" x 42 1/2" triangle strip. Press. Repeat to make a second triangle strip.

7. Stitch a 1 1/2" x 42 1/2" orange swirl strip to opposite long sides of the top and bottom rows. Press. Add a triangle strip to the top and bottom of the rows to complete the 11 1/2" x 42 1/2" top and bottom sections. Press.

8. Sew the sections to the top and bottom of the center section to complete the 42 1/2" x 49 1/2" quilt top. Press seams toward the top and bottom sections.

9. Remove the selvage edges from the 57" backing pieces. Join the pieces on the long edges with a 1/2" seam allowance. Press seam open. Trim the side edges to make a 50" x 57" backing piece.

10. Layer the quilt top and backing with a 50" x 57" batting piece. Quilt as desired and bind using your favorite methods and the orange swirl binding strips to complete the quilt.







Exploded Quilt Diagram