



WHY YOU NEED A FABRIC CUTTER: a better way to cut™

Turn your patterns into quilts faster and more accurately with the AccuQuilt GO!® fabric cutting systems. With over 200 piecing and appliqué shapes, a GO! Fabric Cutter is a great value and gives you the confidence to make projects you never would have attempted.

MEET THE GO! CUTTERS:

- 90% faster than rotary cutting
- Reduces fabric waste
- Accurately cuts up to 6 layers of fabric at a time
- Minimizes hand, arm and back strain

[Why you need a fabric cutter >](#)



GO! FABRIC CUTTER

GO! BABY FABRIC CUTTER

GO! BIG ELECTRIC FABRIC CUTTER

[Choose which fabric cutter is right for you >](#)

GO! Rings of Tangerine Quilt

Finished Size 48" x 60"

Fabric provided by
Robert Kaufman Fabrics.

GO!® DIES USED

- GO! Flowering Snowball-12" Finished (55252)
- GO! Strip Cutter-2-1/2" (2" Finished) (55017 or 55014)

FABRIC REQUIREMENTS

- Fabric 1 (White)—4 yards
- Fabric 2 (Pink)—1-1/2 yards
- Fabric 3 (Orange)—2 yards
- Binding—3/4 yard
- Batting—60" x 70"
- Backing—4 yards

CUTTING DIRECTIONS

Fabric 1:

- Cut 80—Piece A

Fabric 2:

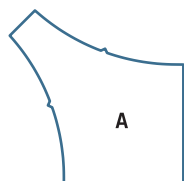
- Cut 40—Piece B

Fabric 3:

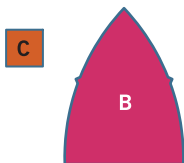
- Cut 40—Piece B
- Cut 20—Piece C

Binding:

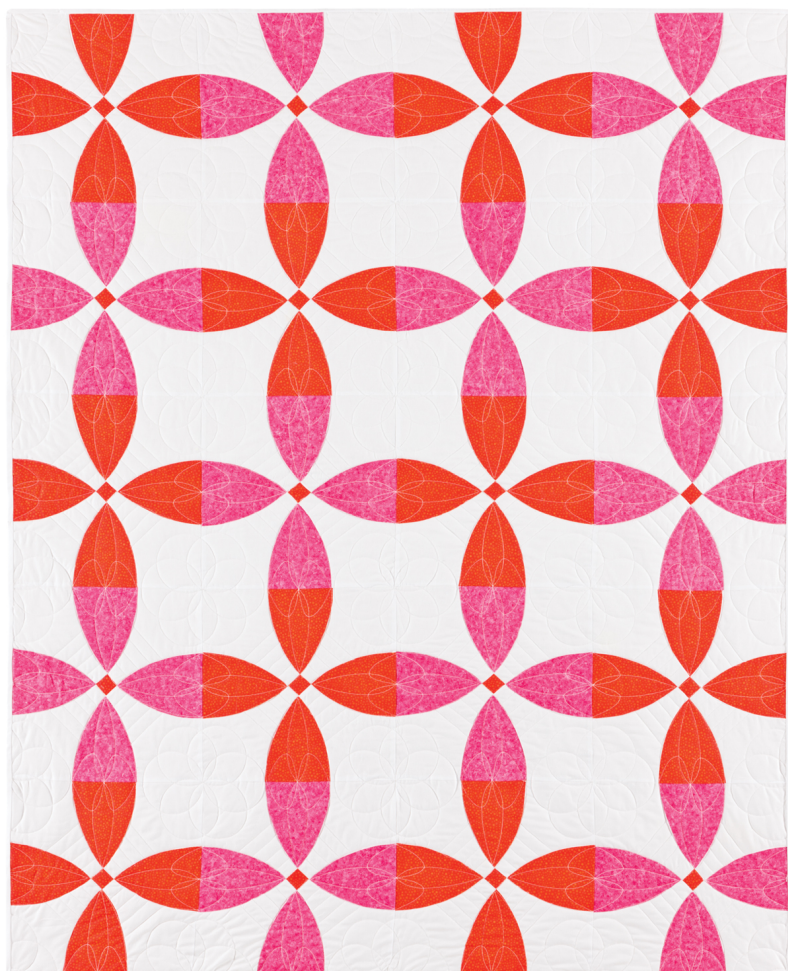
- Cut 7—2-1/2" x width of fabric (WOF) strips



Concave Piece

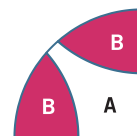
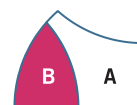


Convex

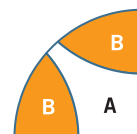
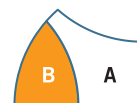


SEWING DIRECTIONS

1. Line up notches and pin, then sew one Fabric #1 Piece A to one Fabric #2 Piece B. Press towards Piece B.
2. Line up notches and pin, then sew one Fabric #2 Piece B to the other side of Fabric #1 Piece A. Press towards Piece B.
3. Make two Unit #1.
4. Pin and sew short side of one Fabric #1 Piece A to one Fabric #3 Piece C.
5. Pin and sew one Fabric #1 to the other side of Fabric #3 Piece C to make Unit #2.
6. Line up notches and pin, then sew one Unit #1 to each side of one Unit #2.
7. Make a total of 10, Block #1.
8. Line up notches and pin, then sew one Fabric #1 Piece A to one Fabric #3 Piece B. Press towards Piece B.
9. Line up notches and pin, then sew one Fabric #3 Piece B to the other side of Fabric #1 Piece A. Press towards Piece B.
10. Make two Unit #1.

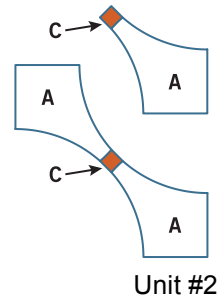


Unit #1



Unit #1

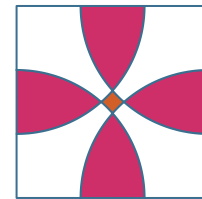
11. Pin and sew short side of one Fabric #1 Piece A to one Fabric #3 Piece C.
12. Pin and sew one Fabric #1 to the other side of Fabric #3 Piece C to make Unit #2.
13. Line up notches and pin, then sew one Unit #1 to each side of one Unit #2.
14. Make a total of 10, Block #2.
15. Lay out the 10 Block #1 and 10 Block #2 blocks as shown.
16. Pin and sew blocks into rows pressing seams in opposite directions.
17. Pin and sew rows together pressing seams in opposite directions.



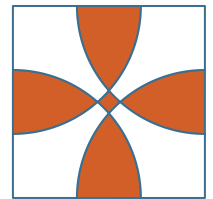
Unit #2

QUILTING AND FINISHING

1. Layer quilt top with batting and backing.
2. Pin or baste layers together.
3. Model was custom machine quilted.
4. Add binding, mitering the corners.



Block #1



Block #2

