

My Sunflower Garden

Quilt 1

by Denise Russell



Quilt size: 72" x 92" - Pillow size: 20" x 32"

Skill Level: Intermediate



Henry Glass & Co., Inc.

49 West 37th Street
New York, NY 10018

Tel: 212-686-5194 - Fax: 212-532-3525

Toll Free: 800-294-9495 - www.henryglassfabrics.com

facebook

Free Project
NOT FOR RESALE

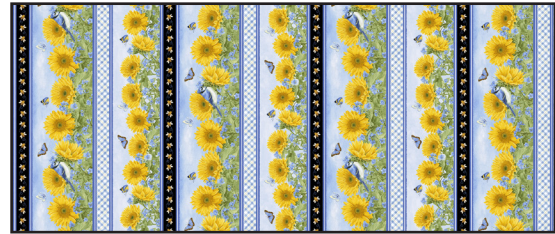


My Sunflower Garden

Fabrics in the Collection



1377-74 Blocks



1380-74 Stripe



1378-94 Packed Sunflowers



1379-7 Small Blocks



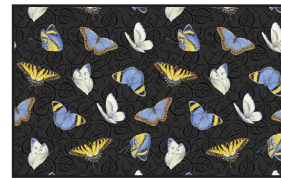
1381-7 Tossed Sunflower
White Multi



1381-99 Tossed Sunflower
Black Multi



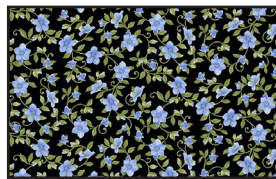
1382-7 Tossed Butterflies
White Multi



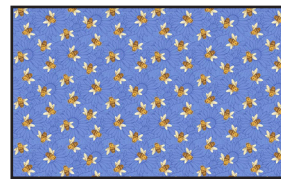
1382-99 Tossed Butterflies
Black Multi



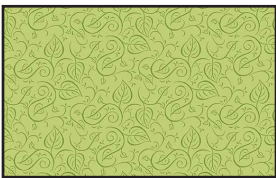
1383-7 Vine White Multi



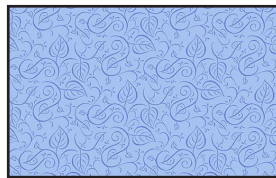
1383-99 Vine Black Multi



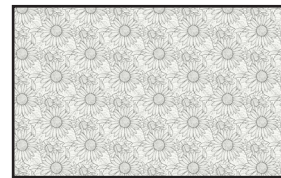
1384-74 Tossed Bees
Blue Multi



1385-61 Leaves Green



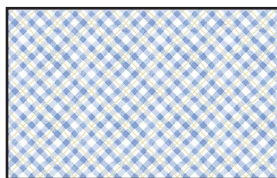
1385-71 Leaves Blue



1386-9 Outlined Sunflower
White

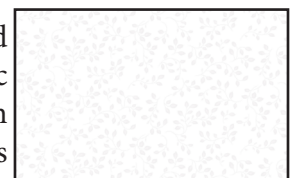


1386-77 Outlined Sunflower
Blue



1387-7 Plaid White Multi

Selected
Fabric
from
Folio Basics



7755-01

Materials

Yardages and cutting instructions are based on 42" of usable fabric width

1 1377-74 Block-Blue
 1/8 yard 1382-7 Tossed Butterflies-White Multi
 1/3 yard 1385-61 Leaves-Green (blocks and leaves)
 1/3 yard 1387-7 Plaid-White Multi (blocks and circles)
 3/8 yard 1386-77 Outlined Sunflower-Blue (blocks and petals)
 3/8 yard 1381-99 Tossed Sunflowers-Black Multi
 1/2 yard 1386-9 Outlined Sunflower-White
 1/2 yard 1385-71 Leaves-Blue
 1/2 yard 1379-7 Small Blocks-White
 1/2 yard 1378-94 Packed Sunflowers-Black Yellow (blocks and flowers)
 5/8 yard 1383-7 Vine-White Multi
 2/3 yard 1382-99 Tossed Butterflies-Black Multi
 1-1/8 yards 1383-99 Vine-Black Multi* (blocks, flowers, and binding)
 1-1/4 yards 1384-74 Tossed Bees-Blue Multi (blocks and border)
 1-1/4 yards 7755-01 Folio Basics
 2-2/3 yards 1380-74 Stripe-Blue Multi (border)
 5-5/8 yards 1379-7 Small Blocks-White for backing
 80" x 100" piece of batting
 Plastic for template
 Fusible web
 * Includes binding

Cut Fabrics

Note: All strips are cut across the width of the fabric (WOF) from selvage to selvage unless otherwise noted.

From 1377-74 Block-Blue:

*Cut eight 7-3/4" blocks.

From 1382-7 Tossed Butterflies-White Multi:

*Cut one (3-1/2" x WOF) strip. Sub-cut twelve 3-1/2" squares.

From 1385-61 Leaves-Green**:

*Cut one (2" x WOF) strip. Sub-cut twelve 2" squares.

*Cut one (2-3/8" x WOF) strip. Sub-cut twelve 2-3/8"

squares.

From 1387-7 Plaid-White Multi**:

*Cut one (2" x WOF) strip. Sub-cut eight 2" x 3-1/2" rectangles.

*Cut one (2-3/8" x WOF) strip. Sub-cut sixteen 2-3/8" squares.

From 1386-77 Outlined Sunflower-Blue**:

*Cut one (2-3/8" x WOF) strip. Sub-cut:

- Eight 2-3/8" squares

- Eight 2" squares

From 1381-99 Tossed Sunflowers-Black Multi:

*Cut three (2-1/2" x WOF) strips for sashing.

*Cut one (4-3/4" x WOF) strip. Sub-cut two 4-3/4" squares.

From 1386-9 Outlined Sunflower-White:

*Cut one (2-7/8" x WOF) strip. Sub-cut twelve 2-7/8" squares.

*Cut four (3-1/4" x WOF) strips. Sub-cut forty-two 3-1/4" squares.

From 1385-71 Leaves-Blue:

*Cut one (2" x WOF) strip. Sub-cut twenty 2" squares.

*Cut two (2-3/8" x WOF) strips. Sub-cut twenty 2-3/8" squares.

*Cut three (3-1/4" x WOF) strips. Sub-cut twenty-eight 3-1/4" squares.

From 1379-7 Small Blocks-White:

*Cut two (8-1/2" x WOF) strips for second row.

From 1378-94 Packed Sunflowers-Black Yellow**:

*Cut three (2-1/2" x WOF) strips for sashing.

*Cut one (4-3/4" x WOF) strip. Sub-cut three 4-3/4" squares.

From 1383-7 Vine-White Multi:

*Cut one (2" x WOF) strip. Sub-cut twelve 2" x 3-1/2" rectangles.

*Cut three (2-7/8" x WOF) strips. Sub-cut thirty-two 2-7/8" squares. Cut 12 squares once diagonally. (D)

*Cut three (3-1/4" x WOF) strips. Sub-cut twenty-

ty-eight 3-1/4" squares.

From 1382-99 Tossed Butterflies-Black Multi:

*Cut two (6-7/8" x WOF) strips. Sub-cut ten 6-7/8" squares. Cut once diagonally. (A)

*Cut one (7-3/4" x WOF) strip. Sub-cut four 7-3/4" squares.

From 1383-99 Vine-Black Multi**:

*Cut three (2-3/8" x WOF) strips. Sub-cut forty 2-3/8" squares.

*Cut one (3-1/2" x WOF) strip. Sub-cut eight 3-1/2" squares.

*Cut nine (2-1/2" x WOF) strips for binding.

From 1384-74 Tossed Bees-Blue Multi:

*Cut four (3-1/4" x WOF) strips. Sub-cut forty-two 3-1/4" squares.

*Cut one (7-1/4" x WOF) strip. Sub-cut five 7-1/4" squares. Cut twice diagonally. (B)

*Cut eight (2" x WOF) strips for border 1.

From 7755-01 Folio Basics:

*Cut six (1-1/2" x WOF) strips for sashing.

*Cut one (7-1/4" x WOF) strip. Sub-cut five 7-1/4" squares. Cut twice diagonally. (C)

*Cut two (12-1/2" x WOF) strips. Sub-cut five 12-1/2" squares.

** Save remaining fabric for applique' shapes.

Assemble Blocks

Measurements include 1/4" seam allowances. Sew with right sides together unless otherwise stated. If no direction is specified, press seam toward darker fabric.

1. Draw a diagonal line on the wrong side of the Outlined Sunflower-White 3-1/4" squares. Place the marked squares over the 3-1/4" squares of Tossed Bees-Blue Multi, right sides together, and stitch 1/4" from both sides of the marked line. Cut on the line, press open, and trim ears. Create 84 half-square triangles (HST).

2. Sew together three HST from step 1 and press seams open. Repeat to make 12 units.

3. Noticing patch orientation on block photo below, sew a unit from step 2 to the left and to the right sides of one 7-3/4" square from the Block-Blue. Repeat with five more 7-3/4" squares. Press seams toward center square.

4. Sew together four HST from step 1 and one 2-7/8" Outlined Sunflower-White. Press seams open. Make 12 units. (Figure 1). Press seams toward end squares.



Figure 1.

5. Sew one unit from step 4 to the top and one to the bottom of the block. Press seams toward the center block. (Figure 2). Repeat to make 6 blocks.

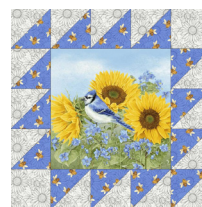


Figure 2.

6. Repeat steps 1-5 using the Vine Multi-White and Leaves-Blue 3-1/4" squares, and the Tossed Butterflies-Black Multi 7-3/4" squares. Notice: for these blocks, the units from step 4 begin with the Vine Multi-White 2-7/8" square, and the HST are rotated. (Figure 3). Make 4 blocks.

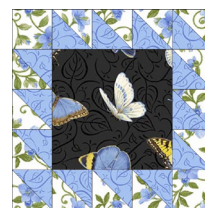


Figure 3.

7. Sew a Tossed Bees-Blue Multi triangle B to a Folio Basics triangle C. Sew a Tossed Butterflies-Black Multi triangle A to the patch to form a 6-1/2" block. Repeat to make 20 blocks (Figure 4 - next page).



Figure 4.

8. Draw a diagonal line on the wrong side of six Leaves-Green 2-3/8" squares. Place the marked squares over six 2-3/8" squares of Leaves-Blue, right sides together, and stitch 1/4" from both sides of the marked line. Cut on the line, press open, and trim ears. Create 12 2" (HST).

9. Sew a Vine Multi-White triangle D to either side of a HST from step 8. Repeat to make 12 units. Sew two units to two opposing sides of a Packed Sunflowers-Black Yellow 4-3/4" square. Press seams toward center square. Sew two more units to the other sides. Make 3 block centers. (Figure 5).



Figure 5.

10. Sew one Leaves-Green and one Leaves-Blue 2" square to the short ends of a Vine Multi-White 2" x 3-1/2" rectangle. Repeat to make 12 units.

11. Repeat step 8 to make the following HST:

- 12 Leaves-Green/Vine-Black Multi
- 12 Leaves-Blue/Vine-Black Multi
- 24 Vine-White Multi/Vine Black-Multi

12. With the HST from step 11, assemble 12 units as shown below (Figure 6):



Figure 6.

13. Sew a unit from step 12 to a unit from step 10.

Make 12 patches.

14. Assemble block rows as follows (Figure 7):

- Row 1: One Tossed Butterflies-White Multi 3-1/2" square, one patch from step 13, one Tossed Butterflies-White Multi 3-1/2" square;
- Row 2: One patch from step 13, a center square from step 9, another patch from step 13;
- Row 3: Repeat row 1.

Sew rows together matching adjacent seams. Make 3 blocks.



Figure 7.

15. Repeat steps 10-14 using the Tossed Sunflowers-Black Multi 4-3/4" squares, the Plaid-White Multi 2" x 3-1/2" rectangles, the Vine-Black Multi 3-1/2" squares, and the following 2-3/8" squares to make 2 blocks:

- Leaves-Blue and Outlined Sunflower-Blue: make 8 HST;
- Leaves-Blue and Vine-Black Multi: make 8 HST;
- Outlined Sunflower-Blue and Vine-Black Multi: make 8 HST;
- Plaid-White Multi and Vine-Black Multi: make 16 HST.

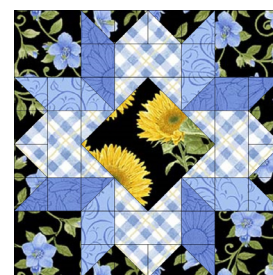


Figure 8.

16. Trace applique' shapes on the plastic template and cut on the outline of each shape. Trace shapes on the smooth side of the fusible web leaving about 1/2" in between shapes: 5 long stems, 10 small stems, 15 circles, 120 petals, 5 leaves of each shape.

17. Fuse shapes to the wrong side of the fabrics according to the manufacturer's instructions: Leaves-Green for stems and leaves, Outlined Sunflower-Blue for the petals, and Plaid-White Multi, Vine-Black Multi, and Packed Sunflowers-Black Yellow for the flowers.

18. Cut each shape with sharp scissors and remove paper backing.

19. Fold a Folio Basics 12-1/2" background square twice diagonally and crease the folds. Referring to the quilt photograph for flower fabric placement (Figure 9) and leaving 3/4" from the edges of the square, arrange applique' shapes: stems and leaves, then flower and petals on the left corner, flower on the right corner, and then the bottom flower, ensuring the petals form diamonds between the flowers. Repeat to make 5 blocks.



Figure 9.

20. Machine applique' using blanket stitch and matching threads.

Assemble Quilt Top

21. Make the second row by sewing two 8-1/2" strips of Small Blocks-White together end to end using a diagonal seam. Cut a 60-1/2" strip.

22. Noticing the block and sashing placement on the quilt photo, lay out seven rows. Stitch the blocks together in each row. Press seams in alternate directions for adjacent rows.

23. To make the first two horizontal sashing rows, sew the three Tossed Sunflowers-Black Multi 2-1/2" strips end to end using a diagonal seam. Cut two 60-1/2"

lengths. Repeat with the Folio Basics 1-1/2" strips for the next four sashing strips, and with the Packed Sunflowers-Black Yellow 2-1/2" strips for the last two sashing strips.

24. Sew the block rows and horizontal sashing strips together and press seams in one direction.

25. For the inner border, sew together the eight Tossed Bees-Blue Multi 2" strips end to end using diagonal seams. Stitch a border strip to each side of the quilt center and trim the extra length. Press seams toward the border. In the same manner, stitch one border to the top and another to the bottom.

26. For the outer border, cut four 5"-wide bird strips along the length of the fabric (they should be 5" wide). Mark the quilt center along the sides, top, and bottom. Mark the center of each border strip. Matching the centers, sew each border strip in place beginning and ending exactly 1/4" from the corners. DO NOT trim the extra length.

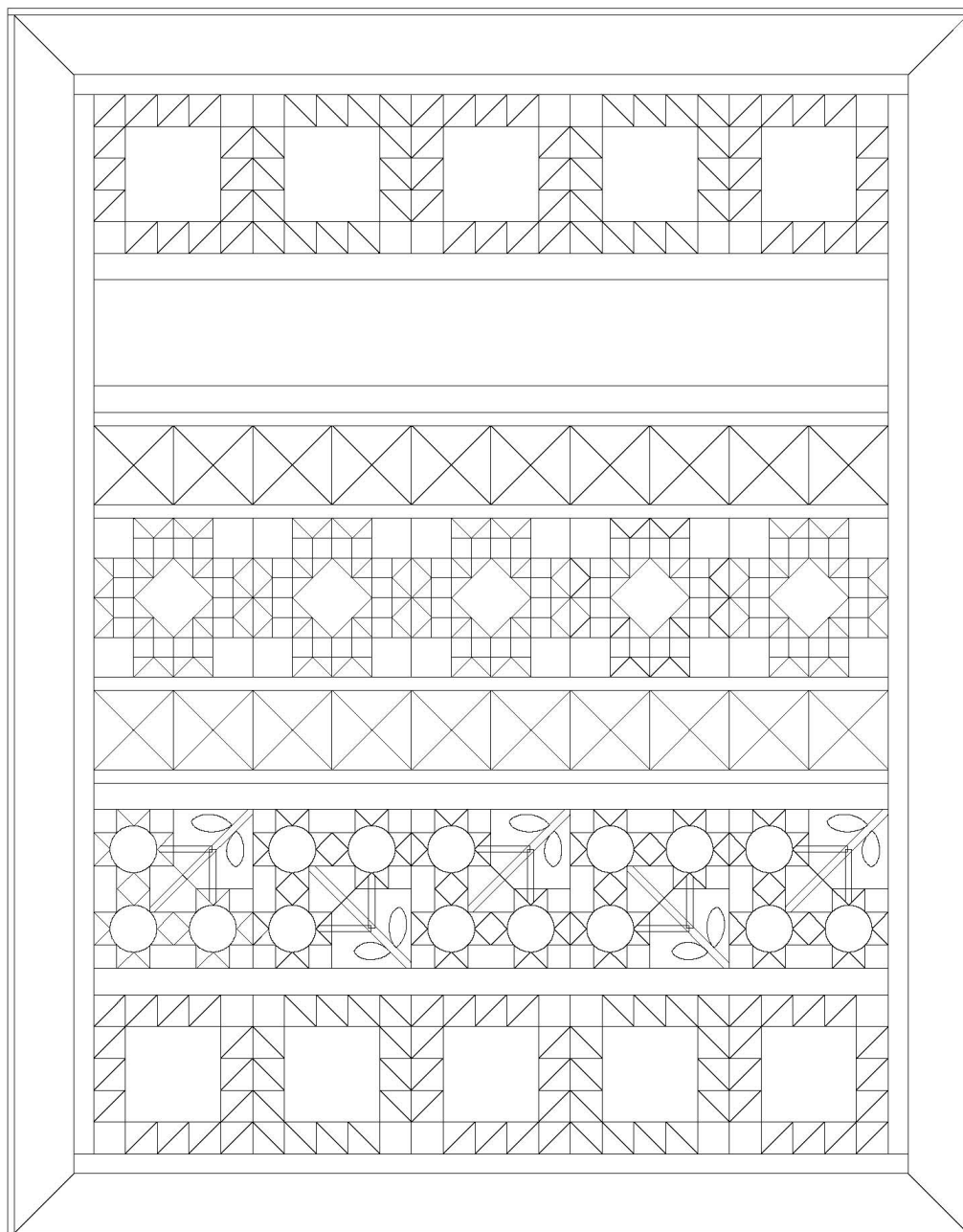
27. To miter the borders, fold one corner of the quilt on a 45° angle so that the border strips are directly on top of one another and the seams nest together. Place rotary ruler on the fold of the quilt so that the long edge is against the fold and the 45° line is on the side of the seam. Draw a line from the corner of the quilt top to the outside edge of the border. Pin the borders together. Position your needle on the inside corner where the border meets the quilt. Stitch directly on the line you have drawn to the outside edge of the border. Trim the excess fabric leaving a 1/4" seam allowance. Press. Repeat the process for the remaining three corners of the quilt.

Finishing

28. Create a quilt sandwich with the batting between the quilt top and the backing. Pin or baste layers together, mark quilting design, and quilt by hand or machine. When quilting is complete, remove pins or basting, trim batting and backing even with raw edges of the quilt top.

29. Join the Vine-Black Multi 2-1/2" binding strips together end to end using a diagonal seam to make one long strip. Sew binding to the edges of the quilt top, mitering corners,

and overlapping ends. Fold binding to the back of the quilt and stitch it in place by hand to finish.



©2018 Henry Glass & Co. Inc.

Every effort has been made to ensure that all projects are error free. All the information is presented in good faith; however, no warranty can be given nor results guaranteed as we have no control over the execution of instructions. Therefore, we assume no responsibility for the use of this information or damages that may occur as a result. When errors are brought to our attention, we make every effort to correct and post a revision as soon as possible. Please make sure to check www.henryglassfabrics.com for pattern updates prior to starting the project. We also recommend that you test the project prior to cutting for kits. Finally, all free projects are intended to remain free to you and are not for resale.

Materials

Yardages and cutting instructions are based on 42" of usable fabric width

2 7-3/4" squares from the 1377-74 Block-Blue
 1/4 yard 7755-01 Folio Basics
 1/4 yard 1384-74 Tossed Bees-Blue Multi
 1/4 yard 1383-99 Vine-Black Multi (binding)
 5/8 yard 1379-7 Small Blocks-White (backing)
 1-1/2 yards 1380-74 Stripe-Blue Multi (border)
 26" x 38" piece of batting (optional)

Cut Fabrics

From 7755-01 Folio Basics:

*Cut two (3-1/4" x WOF) strips. Sub-cut fourteen 3-1/4" squares.

From 1384-74 Tossed Bees-Blue Multi:

*Cut two (3-1/4" x WOF) strips. Sub-cut fourteen 3-1/4" squares.

From 1383-99 Vine-Black Multi:

*Cut three (2-1/2" x WOF) strips for binding.

From 1379-7 Small Blocks-White:

*Cut one (20" x WOF) strip. Sub-cut two 20" x 21" backing rectangles.

From 1380-74 Stripe-Blue Multi:

*Cut four (5" x LOF) butterfly strips.

Assemble Blocks

Measurements include 1/4" seam allowances. Sew with right sides together unless otherwise stated. If no direction is specified, press seam toward darker fabric.

Left Block:



1. Draw a diagonal line on the wrong side of the Folio Basics 3-1/4" squares. Place the marked squares over the 3-1/4" squares of Tossed Bees-Blue Multi, right

sides together, and stitch 1/4" from both sides of the marked line. Cut on the line, press open, and trim ears. Create 28 half-square triangles (HST).

2. Sew together three HST from step 1 and press seams open. Repeat to make another unit.

3. Noticing patch orientation on block photo above, sew a unit from step 2 to the left and to the right sides of one 7-3/4" square from the Block-Blue. Press seams toward center square.

4. Sew together four HST from step 1 and one 2-7/8" Folio Basics square. (Figure 1). Press seams open. Make 2 units. Sew one unit to the top and one to the bottom of the block. Press seams toward the center block.

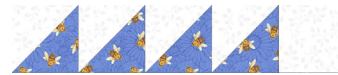


Figure 1.

Right Block:



5. Repeat steps 1-4 but notice that for this block the HST are rotated and the units from step 3 begin with the Folio Basics 2-7/8" square. (Figure 2).



Figure 2.

Assemble Pillow

6. Sew blocks 1 and 2 together.

7. For the border, mark the pillow center along the sides, top, and bottom. Mark the center of each border strip. Matching the centers, sew each border strip in place beginning and ending exactly 1/4" from the corners. DO NOT trim the extra length.

8. To miter the borders, fold one corner of the pillow on a 45° angle so that the border strips are directly on top of one another and the seams nest together. Place rotary ruler on the fold of the pillow so that the long edge is against the fold and the 45° line is on the side of the seam. Draw a line from the corner of the pillow top to the outside edge of the border. Pin the borders together. Position your needle on the inside corner where the border meets the pillow. Stitch directly on the line you have drawn to the outside edge of the border. Trim the excess fabric leaving a ¼" seam allowance. Press. Repeat the process for the remaining three corners of the pillow.

Finishing

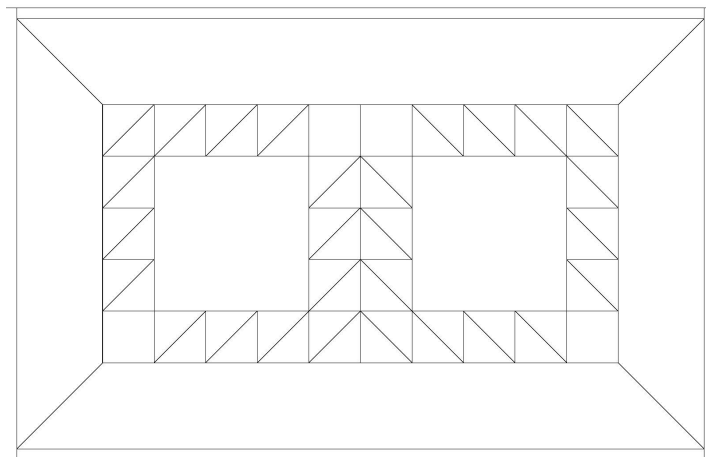
9. If the pillow top will be quilted, lay pillow top on the batting and pin or baste layers together. Mark quilting design and quilt by hand or machine. When quilting is complete, remove pins or basting, trim batting and pillow top raw edges even.

10. Working with the Small Blocks-White 20" x 21" backing rectangles, fold one short end in 4" from one

short edge of each rectangle. Top stitch 1/4" in from the folded edge.

11. Place pillow top right side down on the table. Lay the first rectangle right side up matching its raw edges and with the top stitched end toward the middle of the pillow. Lay the second rectangle in the same manner so its top stitched end overlaps with that of the first rectangle. Pin all around and sew the layers together with a ¼" seam.

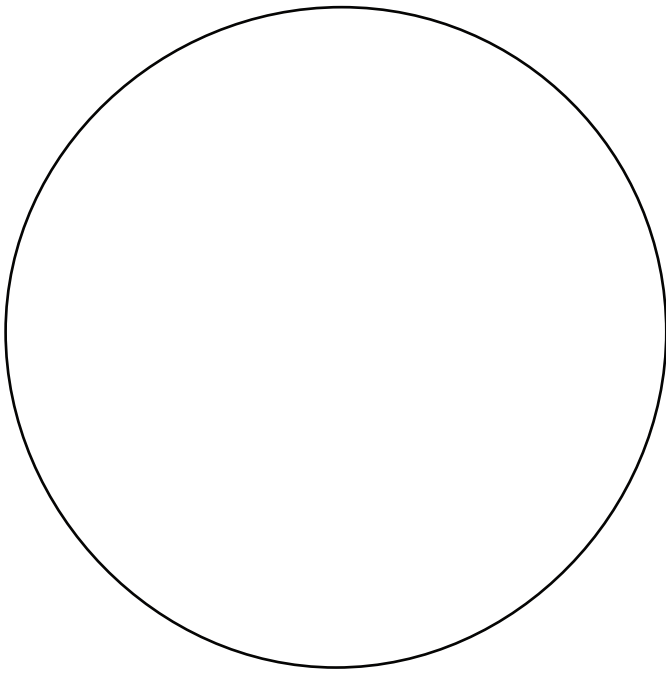
12. Join the Vine-Black Multi 2-1/2" binding strips together end to end using a diagonal seam to make one long strip. Sew binding to the edges of the pillow top, mitering corners, and overlapping ends. Fold binding to the back of the pillow and stitch it in place by hand to finish.



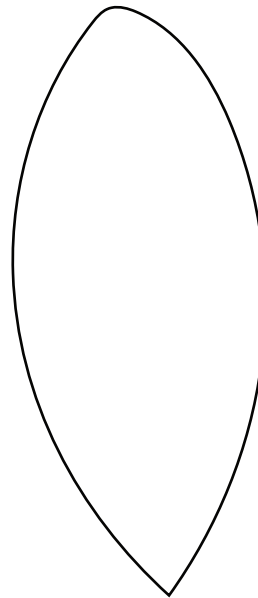
©2018 Henry Glass & Co. Inc.

Every effort has been made to ensure that all projects are error free. All the information is presented in good faith; however, no warranty can be given nor results guaranteed as we have no control over the execution of instructions. Therefore, we assume no responsibility for the use of this information or damages that may occur as a result. When errors are brought to our attention, we make every effort to correct and post a revision as soon as possible. Please make sure to check www.henryglassfabrics.com for pattern updates prior to starting the project. We also recommend that you test the project prior to cutting for kits. Finally, all free projects are intended to remain free to you and are not for resale.

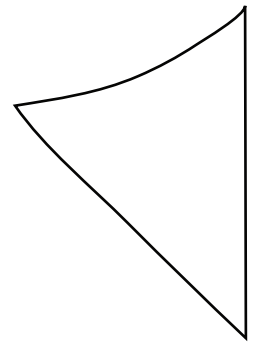
Flower Center



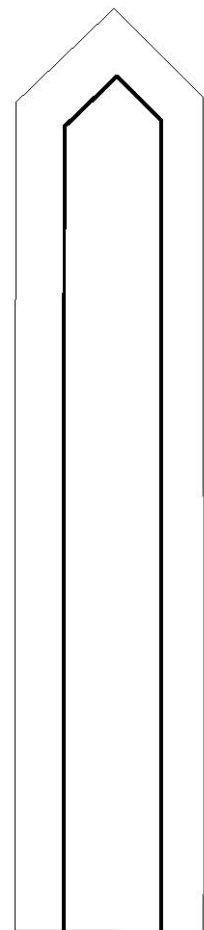
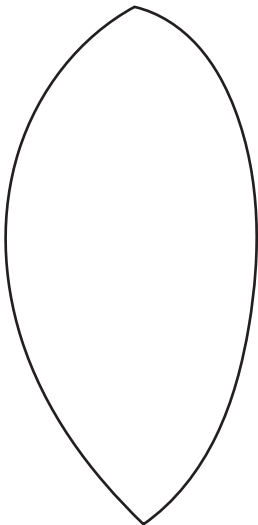
Leaf 1



Petal



Leaf 2



Short Stem

Long Stem

