

Year 'round, lined jacket in three views goes from casual to dressy with a change of fabric. Choose from diagonal piecing with a tie closure, vertical panels with button tab, or diagonal strip piecing with zipper closing. Or mix and match views with closure!
Sizes: XXS (0-2) Bust 30-31", Hip 33-34"; XS (4-6) Bust 32-33"; S (8-10) Bust 34-35", Hip 37-38"; M (12-14) Bust 36-38", Hip 39-41"; L (16-18) Bust 39-42", Hip 42-45"; XL (20-22) Bust 43-46", Hip 46-49"; XXL (24-26) Bust 47-50", Hip 50-53"; XXXL (28) Bust 51-54", Hip 54-57". **SEE PAGE 1 FOR LINE DRAWINGS OF VIEWS.**

VIEW ONE	45" Fabric	54" Fabric
Main Fabric – Piecing. Lower Back, Collars, Sleeves, Facings, Sleeve bottom, Bias trim, Tie.	XXS-L: 2 3/4 yds XL-3XL: 3 yds	2 1/4 yds 2 1/2 yds
Contrast #1 – Piecing, Sleeve Insets	All sizes: 5/8 yd	1/2 yd
Contrast #2 – Piecing	All sizes: 1/2 yd	3/8 yd
Muslin Foundation – Front, Back	All sizes: 2 yds.	
Lining - Front, Back, Pockets, Upper Sleeves	XXS-L: 2 1/2 XL-3XL: 2 5/8	
Interfacing (22" wide)	All sizes: 1 yd.	
VIEW TWO		
Main Fabric – Center Fronts, Back; Side Fronts, Backs; Sleeves; Facings, Collar, Tab	All sizes: 2 1/4	1 2/3 yd 1 3/4 yd
Opt. 1: Single Fab. Contrast Panel –Mid.Back, Upper Mid. Front, Lower Mid. Fronts, Pockets	All sizes 1 3/8 yds.	All sizes 1 1/8
Opt. 2: "Box in Box" Contrast Panel	See "Box in Box" insert inside pattern	
Opt. 3: "Raw Edge Scraps" Contrast Panel	See "Raw Edge Scraps" insert inside	
Lining – Fronts, Back, Upper sleeve, Pockets, (if Contrast is heavy)	XXS-L: 2 1/2 yds XL-3XL: 2 5/8 yds	2 5/8 yds. 2 2/3 yds
Interfacing (22" wide)	All Sizes: 1 yd	
VIEW THREE		
Main Fabric* –Background for Upper Front, Back and Sleeves; Insert Strips for Contrast Lower Fronts & Back, Lower Sleeves, & Collar	XXS-L: 1 3/4 yds XL-3XL: 2 yds.	1 1/2 yds. 1 3/4 yds.
Contrast Fabric* –Background for Lower Front & Back, Lower Sleeves and Collar; Facings; Insert Strips for Upper Front, Back & Sleeves	All Sizes – 2 1/3 yds.	All sizes – 2
Accent Fabrics – Color additions to Insert Strips in Upper Fronts, Back and Sleeves	All sizes: 7 Quarter Yds (<i>not</i> Fat Qtrs).	
Muslin Foundation – Upper Fronts and Backs, Lower fronts and Backs, Upper Sleeves	All sizes: 2 1/4 yds.	
Lining – Fronts and backs, upper sleeves, pockets	XXS-M: 2 1/2 yds L-3XL: 2 5/8 yds	
Interfacing (22" wide)	All sizes: 1 yd.	

*I recommend fabrics fairly close in value to avoid drawing attention to hips!
Suggested Fabrics: Medium to heavy weight cottons, linen, wool, silk. Silk or polyester lining fabrics. **Notions:** View 2: 2 Buttons, 7/8" - 1"; View 3: Separating Zipper, 20-22"

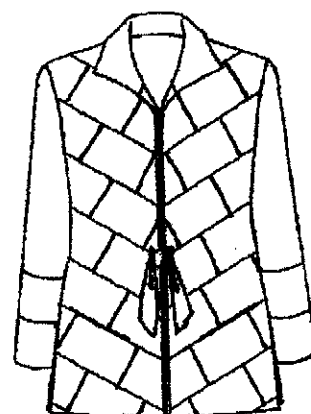
LORRAINE TORRENCE DESIGNS

939 Jenifer St. #2

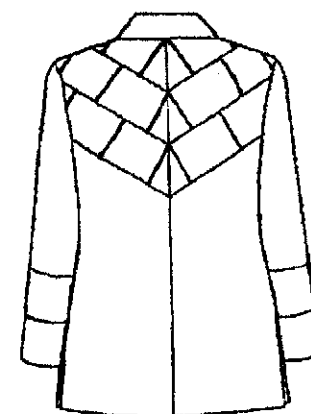
Madison, WI 53703

(608) 467-9108 * Fax (608) 467-9109

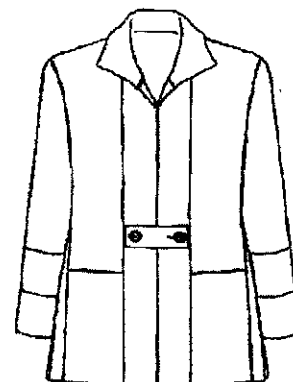
www.lorrainetorrence.com Rev.10/09



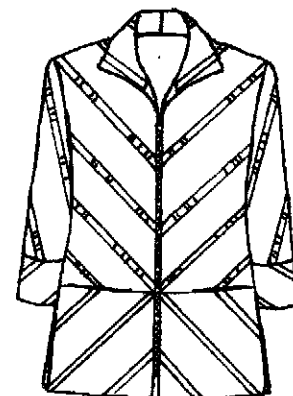
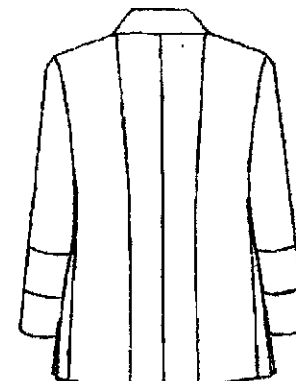
View 1 – Front



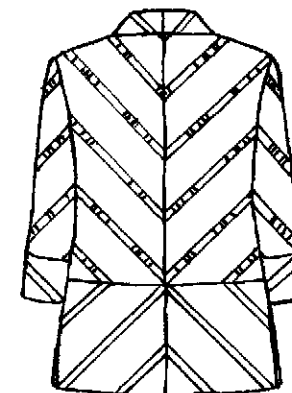
View 1 - Back



View 2 – Front (See Design Inserts for Options) View 2 – Back



View 3 – Front



View 3 – Back