

Suggested Retail
Price - \$18

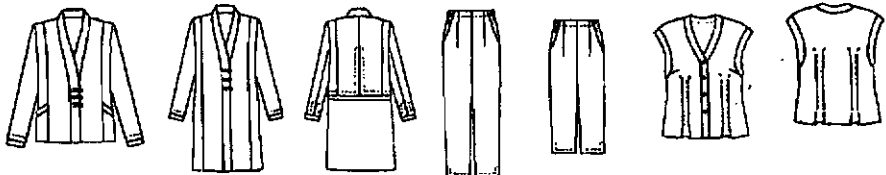
CR# 81

Noren Ensemble #1522 © 2009

Designed by Ruth Vincent

Asian Inspired Jacket in two lengths, long or cropped pant with cap-sleeved blouse.
Sizes: XXS (0-2) Bust 30-31", Hip 33-34"; XS (4-6) Bust 32-33"; S (8-10) Bust 34-35", Hip 37-38"; M (12-14) Bust 36-38", Hip 39-41"; L (16-18) Bust 39-42", Hip 42-45"; XL (20-22) Bust 43-46", Hip 46-49"; XXL (24-26) Bust 47-50", Hip 50-53"; XXXL (28) Bust 51-54", Hip 54-57". **Suggested fabrics and notions listed on p.1**

LONG JACKET	Size	45" Fabric	54" Fabric
Fabric A - Jacket Back, Side Fronts, Front & Back Sleeves, Jacket Neck Band, Side Back Overlay, Pockets	XXS-S M-XL 2XL-3XL	2 5/8 yds. 2 3/4 yds. 3 1/2 yds.	2 3/8 yds. 2 5/8 yds. 2 5/8 yds.
Fabric B - Jacket Center Front, Center Back Overlay, Lower Under Sleeve, Button Loops	XXS-M L-3XL	1 1/8 yds 1 1/4 yds	1 1/8 yds 1 1/2 yds
Fabric C - Jacket Back Underlay, Opt. Trim	All Sizes	3/4 yd.	3/4 yd.
Lining - Jacket Side and Center Front, Jacket Back, Front Sleeves, Back Sleeves	XXS - M L - 3XL	2 1/2 yds. 3 yds	1 7/8 yds. 3 yds.
Lightweight Fusible Interfacing (22" wide)	XXS-M: 1 1/8 yds; L-3XL -1 1/4 yds		
SHORT JACKET			
Fabric A - Jacket Back, Side Fronts, Front & Back Sleeves, Jacket Neck Band, Side Back Overlay	XXS - S M-XL 2XL-3XL	2 1/8 yds 2 1/3 yds. 2 3/4 yds.	1 3/4 yds. 2 1/4 yds. 2 1/3 yds.
Fabric B - Jacket Ctr. Front, Ctr. Back Overlay Lower Under Sleeve, Button Loops, Pockets	XXS-S M-3XL	1 yd. 1 1/4 yd.	1 yd. 1 1/8 yds.
Fabric C - Jacket Back Underlay, Pockets, Trim.	XXS-3XL	3/4 yd.	3/4 yd.
Lining - Center Front, Side Front, Back, Sleeve Lining	XXS-S M-3XL	1 3/4 yds. 2 1/4 yds	1 1/4 yds. 1 7/8 yds.
Lightweight Fusible Interfacing (22" wide)	XXS-XL: 7/8 yd; 2XL-3XL: 1 yd		
BLOUSE			
With Self Fabric Facings - Main Fabric -Blouse Fronts, Back, Facings	XXS-S M-3XL	1 1/2 yds 1 2/3 yds.	1 5/8 yds. 1 2/3 yds.
With Contrast Fabric Facings - Main Fabric - Blouse Fronts, Back	XXS-S M-3XL	1 1/2 yds. 1 5/8 yds	7/8 yds. 1 5/8 yds.
Contrast Fabric - All Facings	All Sizes	7/8 yd.	7/8 yd.
Lightweight Fusible Interfacing (22" wide)	All Sizes, All Fabric Widths	- 1 yd.	
PANT			
Long Pant - Front and Back Pant, Pocket, Pocket Facing	XXS-S M- XL 2XL-3XL	3 yds. 3 1/4 yds. 3 3/8 yds	2 2/3 yds. 2 7/8 yds. 2 7/8 yds.
Cropped Pant - Front and Back Pant, Pocket, Pocket Facing	XXS-S M - 3XL	2 3/8 yds. 2 1/2 yds.	2 3/8 yds. 2 1/2 yds.



GRAINLINE GEAR

(A division of Lorraine Torrence Designs)

939 Jenifer St., #2

Madison, WI 53703

608-467-9108 * Fax 608-467-9109

www.lorrainetorrence.com

Noren Ensemble ©2009 (rev. 10/11)



8 1 4 4 2 6 1 0 1 5 2 2 3