

**Mandalay Medley #1521**  
Designed by Ruth Vincent

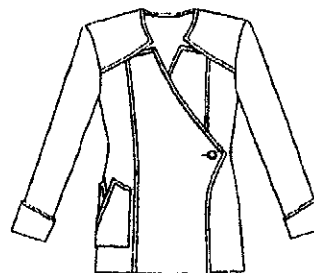
Shaped jacket in three lengths and two front closure choices has an interesting notched neckline. Show off the unusual jacket neckline with a blouse made to pair with it. See p. 1 for Suggested fabrics and notions and for line drawings.

**Sizes:** XXS (0) – Bust 30-31", Hip 33-34"; XS (2-4) – Bust 32-33", Hip 35-36"; S (6-8) – Bust 34-35", Hip 37-38"; M (10-12) – Bust 36-38", Hip 39-41"; L (14-16) – Bust 39-42", Hip 42-45"; XL (18-20) – Bust 43-46", Hip 46-49"; 2XL (22-24) – Bust 47-50", Hip 50-53"; 3XL (26-28) – Bust 51-54", Hip 54-57"

View	Fabric	Size	45" Fabric	Size	54" Fabric	
<b>View 1</b>	Fabric I - Center fronts, Yokes, Half Pocket, Cuff	XXS-S	- 1 yd	All sizes	- 7/8 yd.	
		M-L	- 1 1/8 yd.			
		XL-3XL	- 1 1/4 yd.			
	Fabric II - Side Fronts, Side Backs, Center Back, Sleeves, Half Pocket	XXS-S	- 2 yd.	XXS-M	- 1 1/2 yd.	
		M-L	- 2 1/8 yd		L-XL	- 1 5/8 yd.
		XL-3XL	- 2 1/4 yd.		2XL-3XL	- 1 2/3 yd
	Fabric III - Binding	All sizes - 3/4 yd		All sizes	- 2 5/8 yd	
		Fusible Interfacing - 22" wide to interface 45" or 54" fabric				
		XXS-S	- 2 yd			
	Lining	XXS-L	- 2 7/8 yd			
		XL-3XL	- 3 1/8 yd			
<b>View 2</b>	Fabric I - Center fronts, Yokes, Cuff	XXS-XS	- 1 yd	XXS-M	- 1 yd	
		S-XL	- 1 1/8 yd		L-3XL	- 1 1/8 yd
		2XL-3XL	- 1 1/2 yd			
	Fabric II - Side Fronts, Side backs, Center Back, Pocket, Sleeve	XXS-S	- 2 1/2 yd	XXS-M	- 1 2/3 yd	
		M-L	- 2 5/8 yd		L-XL	- 1 7/8 yd
		XL-3XL	- 2 2/3 yd		2XL-3XL	- 2 1/4 yd
	Fabric III - Binding	All sizes - 3/4 yd		XXS-M	- 3 yd	
		Fusible Interfacing - 22" wide to interface 45" or 54" fabric			L-3XL	- 3 3/8 yd
		XXS-XS	- 2 yd			
	Lining	XXS-M	- 2 3/4 yd			
		L-3XL	- 3 yd			
<b>View 3</b>	Fabric I - Center Fronts, Yokes, Cuff	XXS-S	- 1 1/4 yd	XXS-M	- 1 3/8 yd	
		M-XL	- 1 1/2 yd		L-3XL	- 1 1/2 yd
		2XL-3XL	- 1 2/3 yd			
	Fabric II - Side Fronts, Side Backs Center Back, Sleeve, Pockets	XXS-S	- 3 yd	XXS-M	- 2 1/8 yd	
		M-L	- 3 1/8 yd		L-XL	- 2 1/4 yd
		XL-3XL	- 3 1/3 yd		2XL-3XL	- 2 7/8 yd
	Fabric III - Binding	All sizes - 1 yd		XXS-M	- 4 1/8	
		Fusible Interfacing - 22" wide to interface 45" or 54" fabric			L-3XL	- 4 1/2
		XXS-S	- 2 1/2 yd			
	Lining	XXS-S	- 3 3/8 yd			
		M-XL	- 3 5/8 yd			
		2XL-3XL	- 4 yd			
<b>Blouse</b>	Fabric	XXS-M	- 1 7/8 yd	XXS-XS	- 1 1/2 yd	
		L	- 2 yd		S-L	- 1 5/8 yd
		XL-3XL	- 2 1/4 yd		XL-3XL	- 1 2/3 yd

**Suggested Fabrics:** Jacket - Mid- to heavy weight cottons, linen, lightweight wool. Blouse - Knits, stretch wovens, woven rayon, wool challis, light- to mid-weight silk. Lining - Polyester or rayon lining fabric, China silk, lightweight cotton. Interfacing - Light to medium weight fusible such as Touch O' Gold II, Fusi-Knit, etc. Notions: View 1- one 1" button, 18" of 1/4" wide ribbon for inside tie, light shoulder pads for set in sleeves. Views 2 & 3 - three 1" - 1 1/2" buttons, one snap, light shoulder pads for set in sleeves. Blouse - three 1/2" buttons

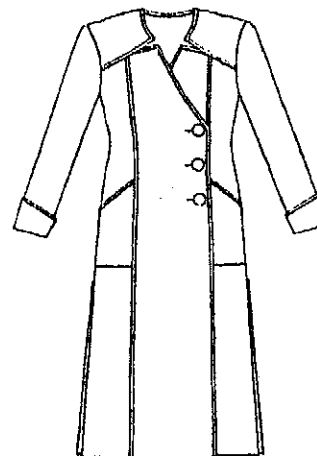
**View I**



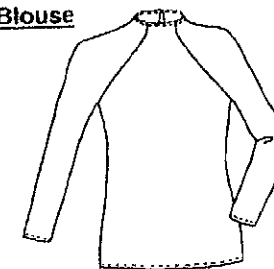
**View II**



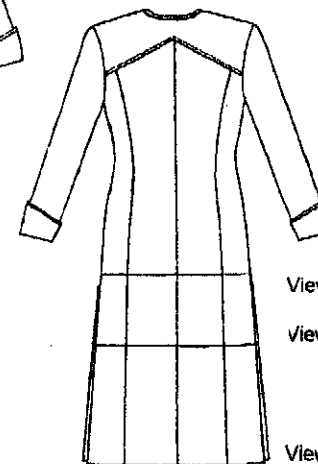
**View III**



**Blouse**



**Back - All Views**



View 1

View 2

View 3

**GRAINLINE GEAR (A Division of Lorraine Torrence Designs)**

939 Jenifer St., #2, Madison, WI 53703  
(608) 467-9108\* FAX (608) 467-9109  
[www.lorrainetorrence.com](http://www.lorrainetorrence.com)

Rev. 10/13

