

Suggested Retail
Price - \$16

City Wraps #1919

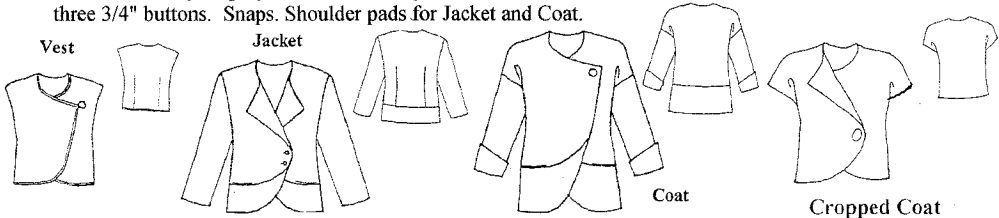
Three takes on the same asymmetrically closed, petal-curved layers give you a Vest, Jacket, Coat and Cropped Coat in one pattern. The vest and jacket are semi-fitted with back darts shaping this flattering style. Coat and Cropped Coat have dropped shoulder. Open one or two lapels to reveal a contrast facing or leave the front closed for another look. Easy-fit coat has dolman sleeves, contrast cuffs and curved bottom.

Sizes: XXS – Bust 30-31", Hip 33-34"; XS – Bust 32-33", Hip 35-36"; S – Bust 34-35", Hip 37-38"; M – Bust 36-38, Hip 39-41; L – Bust 39-42", Hip 42-45"; XL – Bust 43-46", Hip 46-49"; 2XL – Bust 47-50", Hip 50-53"; 3XL – Bust 51-54", Hip 54-57".

Center Back Finished Lengths: Vest: XXS-19"; XS-19 1/2"; S-20"; M-20 1/2"; L-21"; XL-21 1/2"; 2XL-21 3/4"; 3XL-21 3/4". Jacket: XXS-24"; XS-24 1/2"; S-25"; M-25 1/2"; L-26"; XL-26 1/2"; 2XL-26 3/4"; 3XL-26 3/4". Coat: XXS-29 1/4"; XS-29 3/4"; S-30 1/4"; M-30 3/4"; L-31 1/4"; XL-31 3/4"; 2XL-31 3/4"; 3XL-32".

	45" Fabric			54" Fabric		
	XXS-S	M-L	XL-3XL	XXS-S	M-L	XL-3XL
1. VEST (Small photo upper left)						
Pieced: Muslin foundation	1 1/8 yd	1 1/4	1 1/2 yd	3/8 yd.	1 yd	1 1/4 yd.
Main Fabric for Piecing, Facings	1 1/2 yards			1 yard		
Accent Fabric for Piecing	8 Fat Quarter Gradation (as Cherrywood Fabrics)					
Unpieced: Main Fabric	1 1/8 yd	1 1/4	1 1/2 yd	3/8 yd.	1 yd	1 1/4 yd.
Contrast Facings	3/8 yd.	7/8	1 yd.	3/8 yd.	3/4	3/4 yd
Lining	1 1/8 yd	1 1/4	1 1/2 yd	3/8 yd.	1 yd	1 1/4 yd
Interfacing - 22" wide	1 1/4 yd	1 1/8	1 3/8 yd			
2. JACKET (Small photo lower left)						
Main Fabric	1 7/8 yd	2 yd	2 1/8	1 3/8	1 7/8	2 yds.
Contrast Peplum and Facings	1 1/8 yd	1 1/4	1 1/4	1 yd	1 yd	1 1/4 yd
Lining	1 7/8 yd	2 yd	2 1/8	1 3/8	1 7/8	2 yds.
Interfacing - 22" wide	1 1/2 yd	2 yd	2 yd.			
<i>See Inserts inside for yardages and directions for Design Options Using Threadwork and Crazy Patch</i>						
3. COAT (Large photo)						
Main Fabric	2 1/4 yd	2 1/2	3 3/8 yd	2 yds	2 yd	2 1/8 yds
Contrast Lower Coat and Facings	1 3/4 yd	2 yd	2 1/2 yd	1 1/2 yd	1 1/2	1 3/4 yds
Lining	2 1/4 yd	2 1/2	3 3/4 yd	1 1/8 yd	1 1/8	2 yds
Interfacing - 22" wide	2 3/8 yd	2 1/2	2 3/8 yd			
4. CROPPED COAT (Small photo right)						
Main Fabric (Unpieced)	1 1/2 yd	2 1/4 yds		1 1/2 yd	1 1/2 yd	
Fabric for pieced body	8-10 fat quarters			6-10 fat quarters		
Contrast Facing	3/4 yd – all sizes and widths					
Lining	1 1/2 yds – all sizes					
Interfacing - 22" wide	3/4 yd - all sizes					

SUGGESTED FABRICS: Medium weight cottons, linens, silks, lightweight wools. Cotton muslin for foundation. Rayon, polyester or silk lining. **NOTIONS:** Vest and Coat – One 1 1/2" button. Jacket – Two-three 3/4" buttons. Snaps. Shoulder pads for Jacket and Coat.



LORRAINE TORRENCE DESIGNS © 2007

939 JENIFER ST., #2

MADISON, WI 53703

(608) 467-9108 * (608) 467-9109

www.lorrainetorrence.com

(rev. 01-09)

