

**Helpful tools** ~ BlocLoc ruler for trimming up ~ 4-1/2" HST square up, Clover Flower maker for 3-D flower embellishments. (Optional ~ 3 buttons for flower centers). Paper backed fusible web for Fusible applique.

**For Center Appliqué block cut:**

- (1) Background rectangle 9-1/2" x 14-1/2"

**For Spacer Rectangles, cut:**

- (4) Cream Floral rectangles 2-1/2" x 9-1/2". Sew one to each side of the Background.

Trace the templates for the appliqué pieces (Templates are reversed for fusible appliqué ~ add seam allowance to each piece if doing needle turn appliqué). You can use the templates provided for the three flowers, or you can use the Clover flower maker to make 3-D flowers. For our sample we fused the appliques and machine blanket stitched the edges of all applique, and added three 3-D flowers made with Clover Flower Makers.

**For Pieced Churn Dash Block cut:**

- (4) Dk Red 3-1/2" squares, and (4) background 3-1/2" squares. With them, make (8) Half Square Triangle (HST) blocks and trim/square them to 3".  
(1) Jade 1-1/2" x WOF strip & (1) background 2" x WOF strip. Sew these on the long side.  
From this 3" wide strip set, sub-cut (4) 4-1/2" long and (4) 2-1/2" long.  
(2) Background 2-1/2" x 4-1/2" rectangles for churn dash block centers.

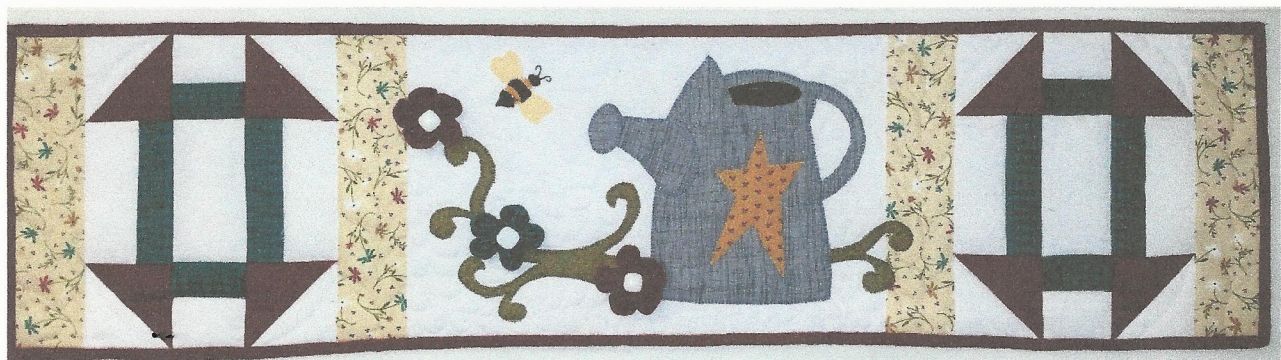
Referring to the photo, arrange the units in three rows of three units to create the Churn Dash block. The HST units go in the corners with the background toward the outside, and the Jade fabric goes towards the inside of the block on all of the side and top/bottom units. Make two Churn Dash blocks.

Sew a Churn Dash block to each end of the center of the row. Then sew the final two Floral Spacer rectangles to each end to complete the row.

## **"Water Your Row & Watch it Grow"**

2015 Row by Row Experience™

Instructions from Spring Water Designs



Row measures 9-1/2" x 36-1/2"



Spring Water Designs Quilting  
9691A Gerwig Lane, Columbia MD 21046  
www.springwaterdesigns  
(410)381-0695

©2015 Spring Water Designs

