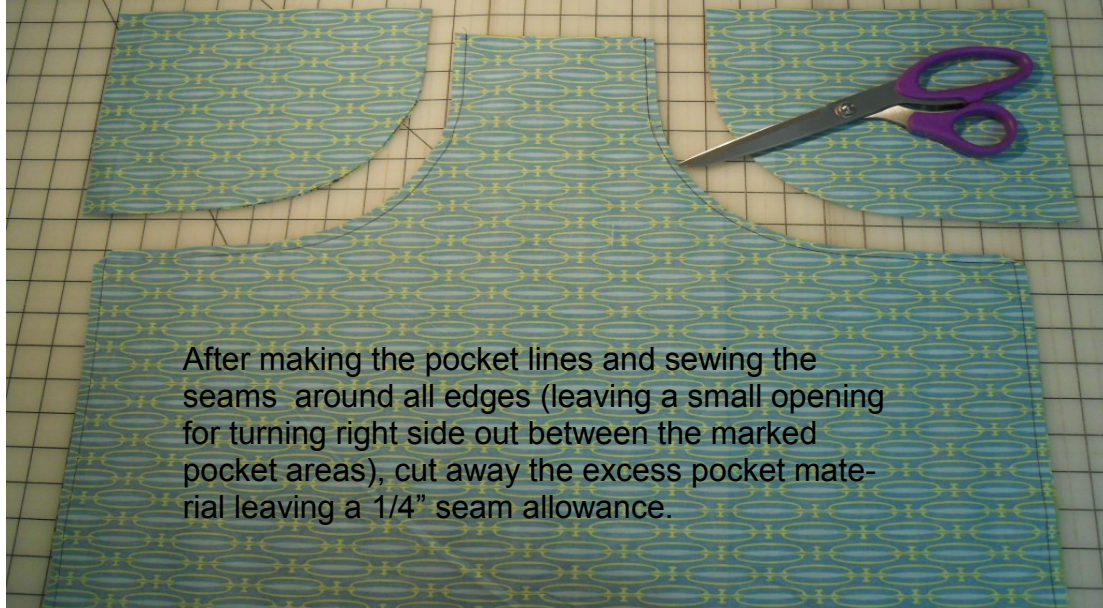


(Rectangles are right sides together & Lining fabric is on top)



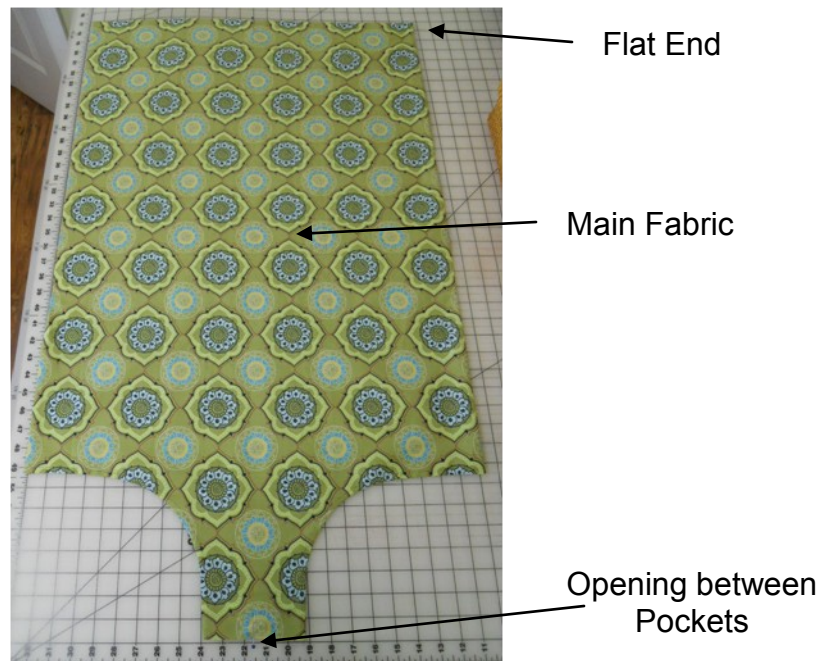
After making the pocket lines and sewing the seams around all edges (leaving a small opening for turning right side out between the marked pocket areas), cut away the excess pocket material leaving a 1/4" seam allowance.

(Leave open for turning right side out)

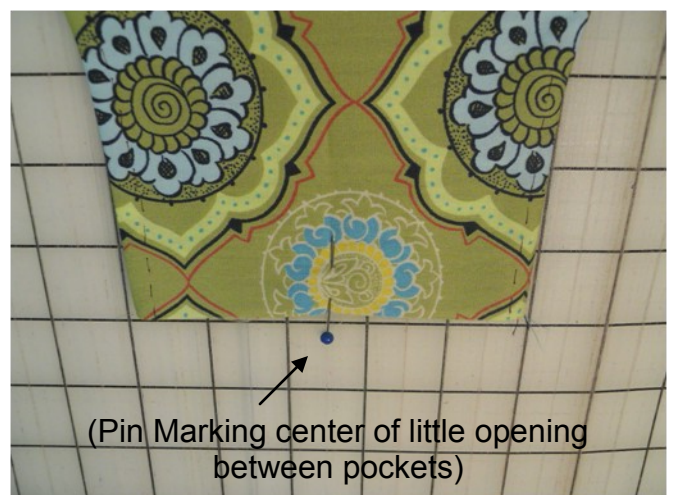
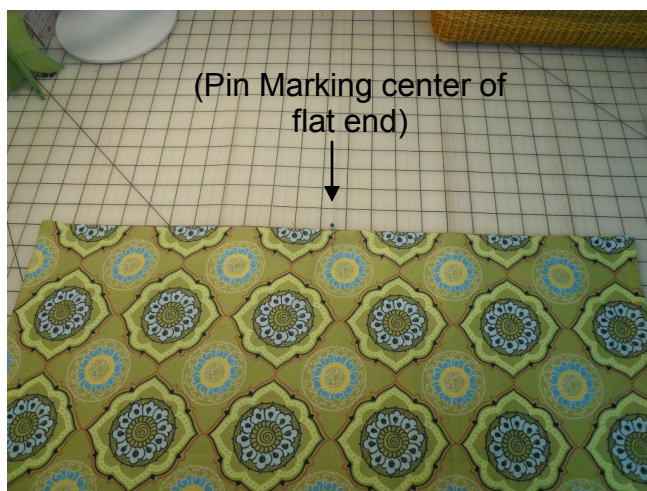


After turning it right side out and pressing. Top stitch around the pocket cut outs for stability.

Then to fold the apron, lay it on a table with the main fabric facing up and the coordinating lining fabric down. (Have the little opening between the pockets toward you and the opposite flat end away from you):

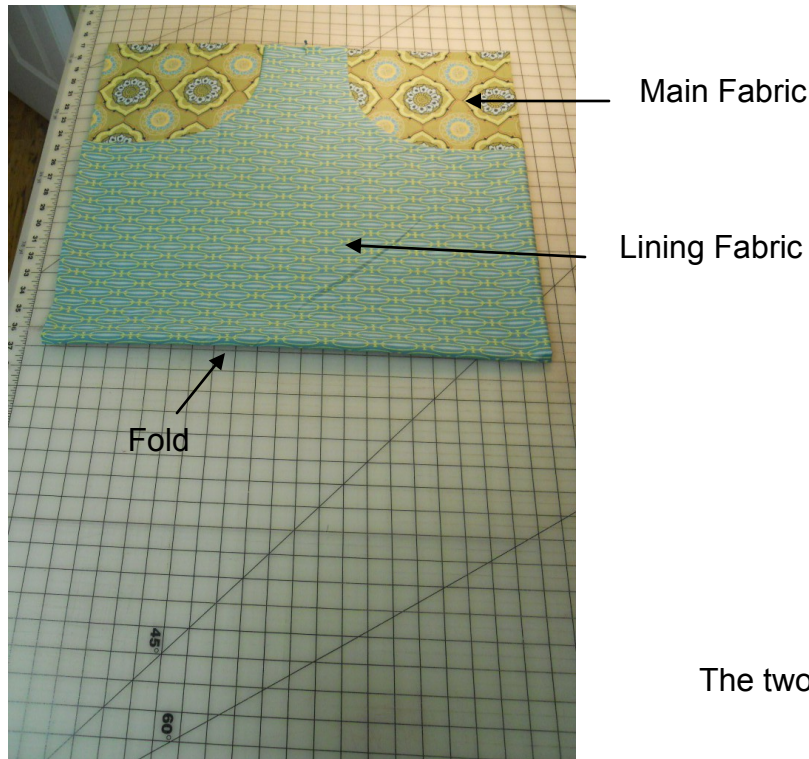


Mark the center of the flat end with a pin, and the center of the little opening between the pockets with a pin.





Fold the unit in half by bringing the opening between the pockets up to meet the center of the opposite flat end (match the pins up). Now the apron is folded with the main fabric on the inside. You will then sew the side seams. (The apron is inside out at this point).



The two pins marking the center should meet.



After sewing the side seams, then you turn it right side out and top-stitch the side seams again to create a French seam so that there is no raw seam allowance inside your large apron pocket.

Then you add the waist band along the top (non-folded edge).