

February Hat

A free pattern by Kate Gagnon Osborn



Kelbourne Woolens Year of Hats

February Hat

Kate Gagnon Osborn

Specifications

YARN

Kelbourne Woolens Germantown (100% N. American Wool; 220 yds/100 gm skein): pebble 059, 1 skein.

GAUGE

18 sts + 32 rnds = 4" (10 cm) in Body Chart pattern on larger ndls, after blocking.

NEEDLES

1 – 16" (40 cm) US 4 (3.5 mm) circular.

1 – 16" (40 cm) US 6 (4 mm) circular.

1 – set US 6 (4 mm) DPNs.

Check your gauge and adjust needle size(s) accordingly if necessary.

NOTIONS

Size G crochet hook, spare US 6 (4 mm) circular, waste yarn, stitch marker, tapestry needle, Kelbourne Woolens label, sewing thread, sharp sewing needle.

SIZE

19.5" (49.5 cm) circumference, unstretched, 9.5" (24 cm) height.

SKILLS

Knit, purl patterning from charts, provisional cast on.

Worthy of Note

This hat begins with a provisional cast on, then a deep folded brim is worked in a K1, P1 Ribbing. Once the ribbing is complete, the provisional cast on is unpicked and placed on a spare circular needle and the stitches are joined to create a folded brim. While I found it easy to place the provisionally cast-on stitches onto my larger needle, you may find it necessary to transfer the stitches to a 2nd smaller needle if the stitches are too small to fit comfortably on the larger needle.

After the brim is complete, the body and crown of the hat are worked in a texture stripe pattern from charts. The Body Chart is worked 11 times around, and the Crown Chart is worked 4 times around. A pom pom and custom leather tag complete the look.

Abbreviations

For commonly used abbreviations in this and other Kelbourne Woolens patterns, visit:

kelbournewoolens.com/abbreviations.

Stitch Patterns

K1, P1 Ribbing (in the rnd over a mult of 2):

Rnd 1: *K1, p1; rep from * around.

Rep Rnd 1 for patt.

Directions

CAST ON:

Using smaller ndl, crochet hook, and waste yarn, provisionally cast on 88 sts (See Useful Tips). Join for working in the rnd, being careful not to twist sts.

BRIM:

Work in K1, P1 Ribbing for 4.5" (11.5 cm).

Transfer provisionally CO sts to spare ndl.

Fold work in half with WS together, and join folded hem as follows:

Next Rnd (Join): *(K tog 1 st from front ndl with 1 st from back ndl), (p tog 1 st from front ndl with 1 st from back ndl); rep from * around – 88 sts.

Change to larger ndl.

BODY:

Begin Working From Charts:

Work Rnds 1–42 of Body Chart.

Decrease For Crown:

Work Rnds 1–15 of Crown Chart – 8 sts.

FINISHING:

Break yarn, leaving an 8" (20 cm) tail. Thread through live sts and fasten off. Soak in cool water and wool wash and block to measurements.

Pom Pom:

Make a 2–3" diameter pompom with remaining yarn. Secure pom pom to hat and tie off inside.

Label:

Using sewing thread and a sharp sewing needle sew Kelbourne Woolens label to brim as shown.

Useful Tips

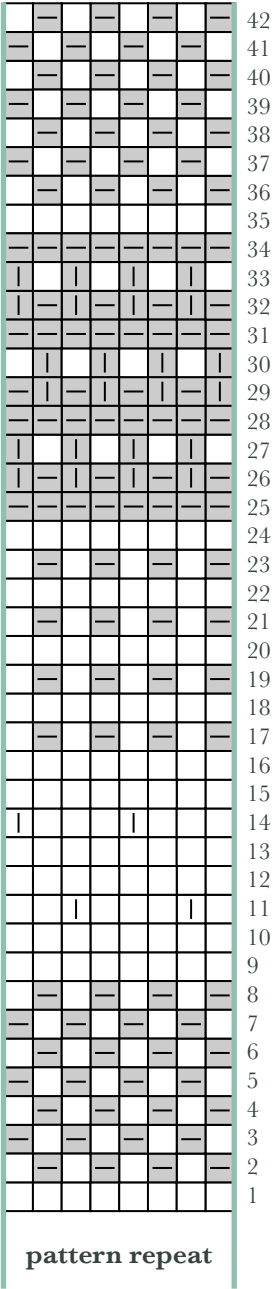
Our preferred method of the provisional cast on is the crochet provisional cast-on. A full tutorial can be found at: kelbournewoolens.com/tips-and-tricks/provisional-cast-on

For a tutorial on working from charts, visit: kelbournewoolens.com/tips-and-tricks/working-from-charts

February Hat

Kate Gagnon Osborn

Body Chart



Crown Chart

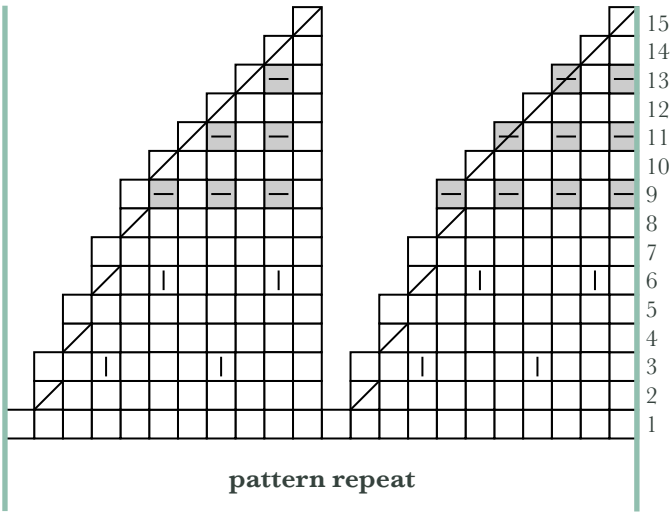


Chart Key

- Knit
- Purl
- Slip 1 with yarn in front
- Slip 1 with yarn in back
- K2tog - 1 st dec'd
- P2tog - 1 st dec'd



Year of Hats

12 designs from
Kelbourne Woolens





Share With Us!

follow us on instagram [@kelbournewoolens](https://www.instagram.com/kelbournewoolens)
and show us your projects using the hashtags
[#kelbournewoolens](https://www.instagram.com/hashtag/kelbournewoolens) [#KWyearofhats](https://www.instagram.com/hashtag/KWyearofhats)