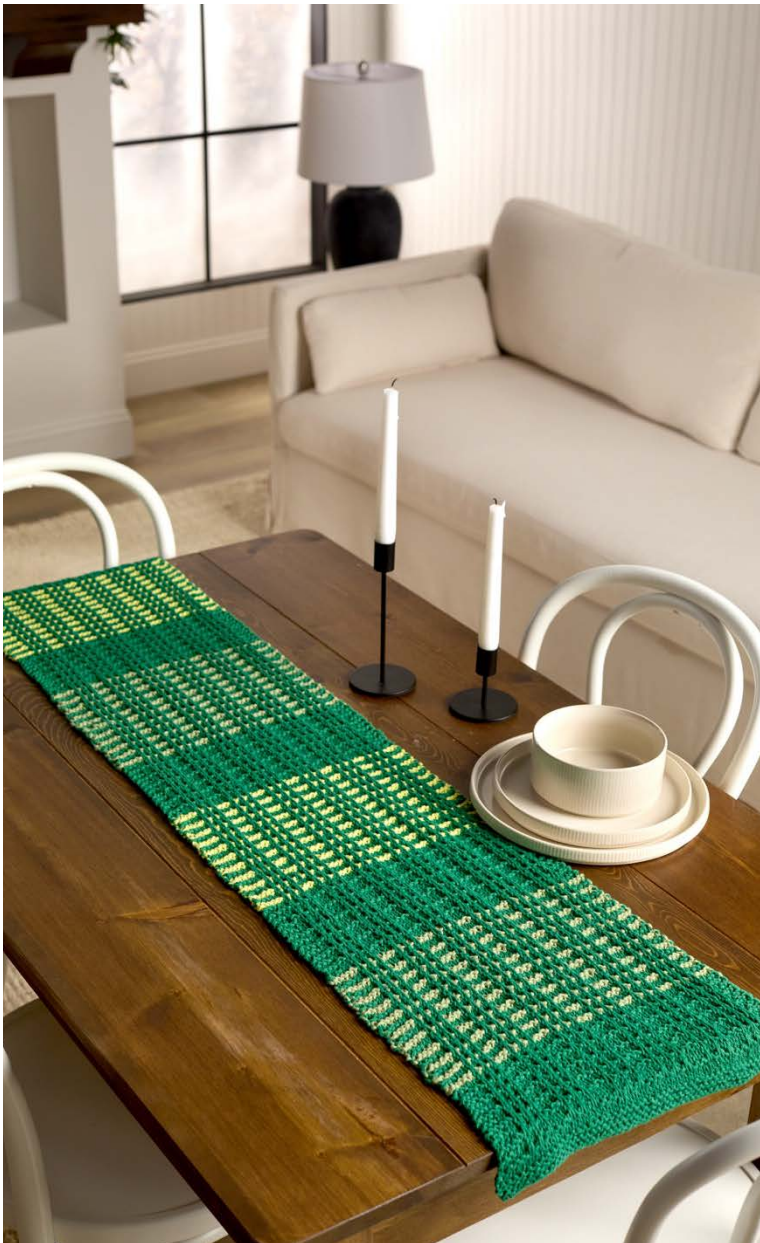




## PATTERN COLLECTION

### Home



#### Triple Stripes Table Runner

Designed by Afifa Sayeed

#### SKILL

Knitting

#### DIFFICULTY

Easy

#### SIZES

One Size

#### FINISHED MEASUREMENTS

Length: 55"

Width: 11¼"

#### MATERIALS

[Universal Yarn Uni Cotton](#) (100% cotton; 75g/131 yds)

- 113 Pickle (MC) - 3 balls
- 114 Ivy (CC1) - 2 balls
- 111 Tree Frog (CC2) - 2 balls

**Needle:** US Size 8 (5 mm) straight (or your preferred needle for knitting flat), or size needed to obtain gauge

**Notions:** Tapestry needle, stitch markers

#### GAUGE

19 sts X 40 rows = 4" in Triple Stripes pattern after blocking

**Save time, check your gauge.**

Knit, Relax, Smile, Repeat.

2026 © Universal Yarn, Inc.

[www.universalyarn.com](http://www.universalyarn.com)

All rights reserved. This pattern may not be reproduced for business, trade or sale.

Questions? Contact [patterns@universalyarn.com](mailto:patterns@universalyarn.com)

## PATTERN NOTES

The Triple Stripes Table Runner features clean lines and textured stitch panels that create a woven look with bold yet balanced color blocks, making the most of our brand-new Uni Cotton yarn. Easy to work and visually striking, it's a satisfying project that adds a polished, handmade touch to everyday meals or special occasions.

This table runner is knit flat from the bottom up. Work all slipped stitches purlwise.

The Triple Stripes pattern is both written and charted for your convenience.

### Triple Stripes One Color

*(multiple of 8 sts)*

**Row 1 (RS):** Knit.

**Row 2 (WS):** Purl.

**Row 3:** K2, \* sl1 wyib, (k1, sl1 wyib) 2 times, k3; rep from \* to last 6 sts, sl1 wyib, (k1, sl1 wyib) 2 times, k1.

**Row 4:** K1, \* (sl1 wyif, k1) 2 times, sl1 wyif, k3; rep from \* to last 7 sts, (sl1 wyif, k1) 2 times, sl1 wyif, k2.

Rep Rows 1-4 for patt.

### Triple Stripes Two Colors

*(multiple of 8 sts)*

**Row 1 (RS):** With MC, knit.

**Row 2 (WS):** With MC, purl.

**Row 3:** With CC, k2, \* sl1 wyib, (k1, sl1 wyib) 2 times, k3; rep from \* to last 6 sts, sl1 wyib, (k1, sl1 wyib) 2 times, k1.

**Row 4:** With CC, k1, \* (sl1 wyif, k1) 2 times, sl1 wyif, k3; rep from \* to last 7 sts, (sl1 wyif, k1) 2 times, sl1 wyif, k2.

Rep Rows 1-4 for patt.

## PATTERN BEGINS

### TABLE RUNNER

#### Lower Border

With MC, cast on 54 sts. Work in garter st until piece meas approx. 1" from cast-on edge.

#### Section 1

**Row 1 (RS):** K3, pm, work Row 1 of Triple Stripes One Color patt to last 3 sts, pm, knit to end.

**Row 2 (WS):** Knit to m, sl m, work Row 2 of Triple Stripes One Color patt to m, sl m, knit to end.

**Row 3:** Knit to m, sl m, work Row 3 of Triple Stripes One Color patt to m, sl m, knit to end.

**Row 4:** Knit to m, sl m, work Row 4 of Triple Stripes One Color patt to m, sl m, knit to end. Cont in patt as est'd until piece meas approx. 4" from cast-on edge, ending with Row 4.

#### Section 2

Join CC1, do not break MC.

**Row 1 (RS):** With MC, knit to m, sl m, work Row 1 of Triple Stripes Two Colors patt to m, sl m, knit to end.

**Row 2 (WS):** With MC, knit to m, sl m, work Row 2 of Triple Stripes Two Colors patt to m, sl m, knit to end.

**Row 3:** With CC1, knit to m, sl m, work Row 3 of Triple Stripes Two Colors patt to m, sl m, knit to end.

**Row 4:** With CC1, knit to m, sl m, work Row 4 of Triple Stripes Two Colors patt to m, sl m, knit to end.

Cont in patt as est'd until piece meas approx. 11" from cast-on edge, ending with Row 4. Break CC1. Cont with MC only.

#### Section 3

Repeat Section 1 until piece meas approx. 14" from cast-on edge, ending with Row 4.

#### Section 4

Join CC2, do not break MC.

**Row 1 (RS):** With MC, knit to m, sl m, work Row 1 of Triple Stripes Two Color patt to m, sl m, knit to end.

**Row 2 (WS):** With MC, knit to m, sl m, work Row 2 of Triple Stripes Two Color patt to m, sl m, knit to end.

**Row 3:** With CC2, knit to m, sl m, work Row 3 of Triple Stripes Two Color patt to m, sl m, knit to end.

**Row 4:** With CC2, knit to m, sl m, work Row 4 of Triple Stripes Two Color patt to m, sl m, knit to end.

Cont in patt as est'd until piece meas approx. 21" from cast-on edge, ending with Row 4. Break CC2. Cont with MC only.

Repeat Sections 1-4, one more time. Then rep Sections 1-3, one time.

#### Upper Border

With MC, work in garter st until piece meas approx. 55" from cast-on edge. Bind off all sts kwise.

Knit, Relax, Smile, Repeat!

2026 © Universal Yarn, Inc.

[www.universalyarn.com](http://www.universalyarn.com)

All rights reserved. This pattern may not be reproduced for business, trade or sale.

Questions? Contact [patterns@universalyarn.com](mailto:patterns@universalyarn.com)

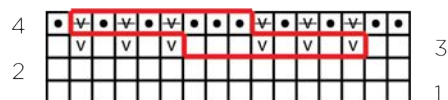
## FINISHING

Gently wash and block to finished measurements.  
Weave in ends.

### Abbreviations

*	indicates a repeat section
approx	approximately
CC	contrast color
cont	continue
est'd	established
garter st	knit every row
k	knit
kwise	knitwise
m	marker
MC	main color
meas	measures
p	purl
patt	pattern
pm	place marker
rep	repeat
RS	right side
sl	slip
st(s)	stitch(es)
WS	wrong side
wyib	with yarn held in back
wyif	with yarn held in front

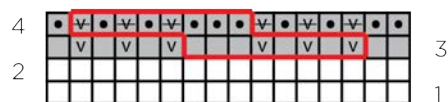
## Triple Stripes One Color



### Key

- pattern repeat
- knit on RS, purl on WS
- purl on RS, knit on WS
- sl1 wyib
- sl1 wyif

## Triple Stripes Two Colors



### Key

- pattern repeat
- with MC, knit on RS, purl on WS
- with CC, knit on RS, purl on WS
- with CC, purl on RS, knit on WS
- with CC, sl1 wyib
- with CC, sl1 wyif

Knit, Relax, Smile, Repeat!

2026 © Universal Yarn, Inc.

[www.universalyarn.com](http://www.universalyarn.com)

All rights reserved. This pattern may not be reproduced for business, trade or sale.

Questions? Contact [patterns@universalyarn.com](mailto:patterns@universalyarn.com)