

GO! Qube 10" Starry Spools Throw Quilt

FINISHED SIZE 40" X 60"



Fabrics provided by Timeless Treasures.

Dies Needed:

GO! Qube Mix & Match Size 10" Block (55797)

- GO! Quarter Square Triangle-5" Finished Square (Shape 4)
- GO! Half Square Triangle-2-1/2" Finished Square (Shape 5)
- GO! Square on Point-4-1/16" (3-9/16" Finished) (Shape 6)

GO! Qube Size 10" Companion Set - Corners (55798)

- GO! Bowtie-5" Finished Square (Shape 11.1)
- GO! Half Square Triangle-1-1/4" (Shape 12.1)

GO! Qube 10" Companion Set - Angles (55799)

- GO! Trapezoid 45°-2-1/4"H x 7-1/4"W Cut (5" Finished Square) (Shape 16)

Additional Dies Needed

- GO! Strip Cutter-2-1/2" (2" Finished) (55017 or 55014)
- GO! Strip Cutter-3-1/2" (3" Finished) (55032)

Fabric Requirements

Fabric Color	Total Yardage
Pure (Light Background)	1-1/2 yards
Lotus (Dark Orchid)	2-1/4 yards
Amethyst (Dark Purple/Orchid Pattern)	1/2 yard
Storm Starburst (Medium Dark Contrast)	1 yard
Batting	48" x 68"
Backing	48" x 68"

Cutting Directions

Fabric Color	GO! Dies Used	Number of Shapes to Cut
Pure (White color)	GO! Quarter Square Triangle-5" Finished Square (Shape 4)	Cut 1—6-1/2" x width of fabric (WOF) plus 6-1/2" x 13" strips. Fanfold into 6-1/2" widths. Sub cut into 32—5" finished quarter square triangles (QSTs).
	GO! Half Square Triangle-2-1/2" Finished Square (Shape 5)	Cut 1—4" x 28" strip. Fanfold into 4" widths. Sub cut into 14—2-1/2" finished half square triangles (HSTs).
	GO! Bowtie-5" Finished Square (Shape 11.1)	Cut 1-1/2—6-1/2 x WOF. Fanfold into 6-1/2" widths. Sub cut into 32—5" finished Bowties.
	GO! Trapezoid 45°-2-1/4"H x 7-1/4"W Cut (5" Finished Square) (Shape 16)	Cut 2—6-1/4" x WOF plus 6-1/4" x 12-1/2" strips. Fanfold into 6-1/4" widths. Sub cut into 28—5" finished Trapezoids.
Lotus (Berry color)	GO! Half Square Triangle-2-1/2" Finished Square (Shape 5)	Cut 5—4" x WOF strip. Fanfold into 4" widths. Sub cut into 92—2-1/2" finished HSTs.
	GO! Half Square Triangle-1-1/4" (Shape 12.1)	Cut 1—4-3/4" x 19" strip. Fanfold into 4-3/4" widths. Sub cut into 32—1-1/4" finished HSTs.
	GO! Trapezoid 45°-2-1/4"H x 7-1/4"W Cut (5" Finished Square) (Shape 16)	Cut 2—6-1/4" x WOF plus 6-1/4" x 12-1/2" strips. Fanfold into 6-1/4" widths. Sub cut into 28—5" finished Trapezoid shapes.
	GO! Strip Cutter-3 1/2" (3" Finished) (55032)	Cut 5—3-1/2" x WOF. Sub cut into 2—3-1/2" x 54-1/2" horizontal borders. Sub cut into 2—3-1/2" x 40-1/2" vertical borders.
Starburst	GO! Strip Cutter-2-1/2" (2" Finished) (55017 or 55014)	Cut 5—2-1/2" x WOF for binding.
	GO! Square on Point-4-1/16" (3-9/16" Finished) (Shape 6)	Cut 1—4-1/2" x WOF strips. Fanfold into 4-1/2" widths. Sub cut into 8—5" finished squares on point.
	GO! Strip Cutter-2-1/2" (2" Finished) (55017 or 55014)	Cut 5—2-1/2" x WOF. Sub cut 2—2-1/2" x 50-1/2" horizontal inner borders. Sub cut 2—2-1/2" x 34-1/2" vertical inner borders.
Amethyst (Blue-Violet color)	GO! Half Square Triangle-2-1/2" Finished Square (Shape 5)	Cut 2—4" x WOF plus 1—4" x 12" strips. Fanfold into 3-7/8" widths. Sub cut into 46—2-1/2" finished HSTs.

Sewing Directions

Press all seams open and use 1/4" seams, unless otherwise indicated.

STAR BLOCK CONSTRUCTION

NOTE: Directions will be for one 10" finished block. Make 8 blocks.

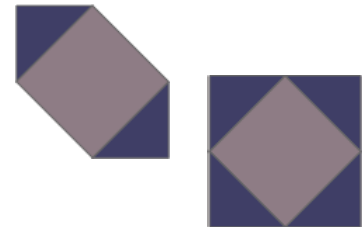
1. Sew one Lotus 1-1/4" finished half square triangle (HST) (Shape 12.1) and one light 2-1/2" finished bowtie square (Shape 11.1) together as shown. Press seam toward the lotus rectangle. Make 32 bowtie subunits.



2. Sew two Lotus 2-1/2" finished HST (Shape 5) and one light 5" finished quarter square triangle (QST) (Shape 4) together as shown. Make 32 Flying Geese subunits.



3. Sew two Amethyst 2-1/2" finished HSTs (Shape 5) to opposite sides of the 5" finished squares on point (Shape 6) as shown. Sew the remaining two Amethyst 2-1/2" finished HSTs (Shape 5) to the opposite sides of the 5" finished squares on point to complete the square. Make 8 finished square in a square subunits.



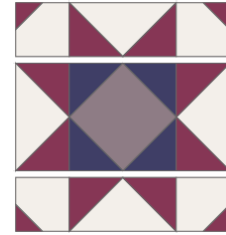
4. Sew one bowtie unit to either end of a flying geese unit as shown. Press seams open. Make 16 bowtie flying geese units.



5. Lay out, pin and sew a flying geese unit to either side of the square in a square unit as shown. Press seams open. Make 8 flying geese-square in a square units.

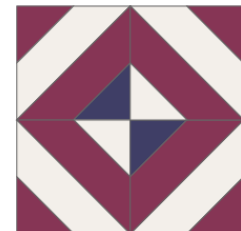
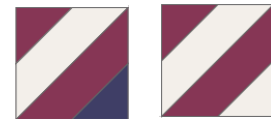


6. Sew a bowtie flying geese unit to either side of a flying geese-square in a square unit as shown. Press seams open. Make eight complete star blocks.



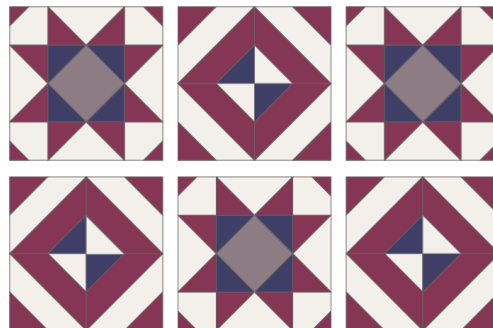
VORTEX BLOCK CONSTRUCTION

1. Sew one Lotus 2-1/2" finished HST (Shape 5) to one light 5" finished trapezoid (Shape 16). Make 28 trapezoid-HST units.
2. Sew one amethyst 2-1/2" finished HST (Shape 5) to one Lotus 5" finished trapezoid (Shape 16). Make 14 trapezoid-HST units.
3. Sew one light 2-1/2" finished HST (Shape 5) to one Lotus 5" finished trapezoid (Shape 16). Make 14 trapezoid-HST units.
4. Sew trapezoid-HST units together to make 28 quarter blocks as shown—make 14 quarter blocks with an amethyst Shape 5 HST and 14 quarter blocks with a light HST as shown.
5. Sew two quarter blocks together as shown to make 14 half blocks.
6. Sew half blocks together to make a complete block as shown. Make 7 blocks.

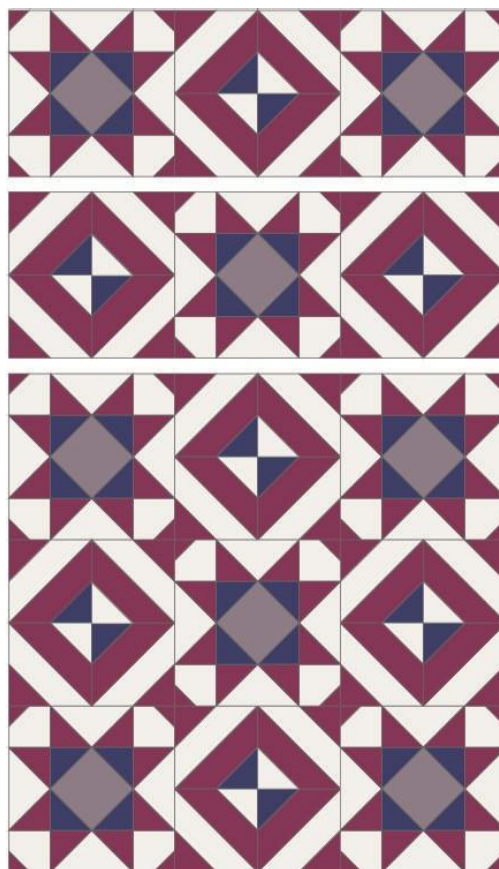


Quilt Assembly:

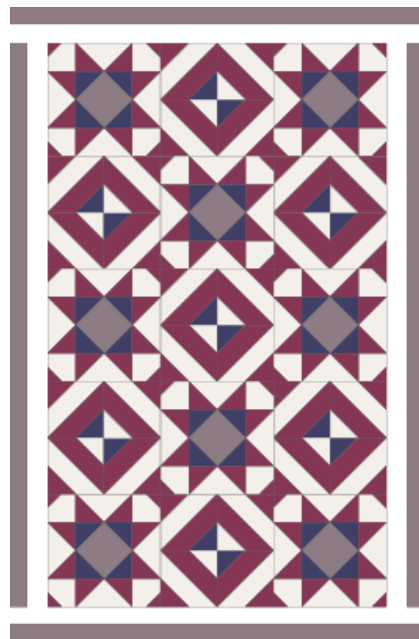
1. Sew blocks into row units as shown. Press seams open.
2. Make three star- vortex-star block row units and make two vortex-star-vortex row units.



3. Sew rows together as shown. Press seams open.



4. Lay out, pin and sew vertical inner borders to assembled quilt top as shown. Adjust length of border as needed. Press seams toward border.
5. Lay out, pin and sew horizontal inner borders to assembled quilt top as shown. Adjust length of borders as needed. Press seams toward border.



6. Layout, pin and sew vertical outer borders to assembled quilt top as shown. Adjust length of border as needed. Press seams toward border.
7. Lay out, pin and sew horizontal outer borders to assembled quilt top as shown. Adjust length of border as needed. Press seams toward border.



Quilting and Finishing:

1. Layer batting between quilt top and backing.
2. Pin or baste layers together.
3. Quilt as desired.
4. Add Lotus binding, mitering corners.

