

Charity Christmas Sock for Food Bank



Each Christmas sock requires two outer sock pieces and two inner (lining) pieces.

Step 1 Place each inner sock and each outer sock right sides together (Construction note: toes are pointing in the same direction) making two units.

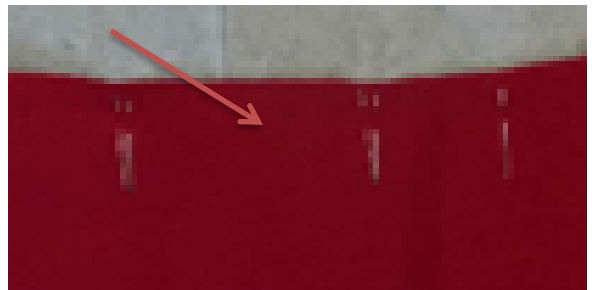


Step 2 Sew the top of each unit together using $\frac{1}{4}$ inch seam allowance.



Step 3 Open each pair and place right sides together. (Construction hint: you may want to press the top seam in opposite directions so that they can nest together). Pin the two pieces together.

Note an area on the straight back of the lining to leave open to turn the socks. You will see this marked on the picture as double pins on two sides.



The space should be big enough for a hand.

Step 4 Stitch a ¼ inch seam around the sock starting at one end of the hand hole and continue around the entire sock to the other end of the hand hole. (Construction hint: trim the pieces so they are even when you sew them. Trimming with pinking shears is helpful. Sometimes in the cutting of the kits one piece will be bigger than another and it's easier if they are even)



Step 5 Insert hand through hand hole and pull out the sock until it is turned right side out. (Construction hint: you may want to clip curves to make this easier)



Press the sock turning the fabric around the hand hole under ¼ inch.

Step 6 Top stitch over the hand hole space



Step 7 Insert the lining into the outer sock.



Step 8 Turn a cuff over showing the lining fabric on the outside of the outer fabric. Voila you have completed a sock.

