



Quilt Seminars at Sea
www.quiltcruises.com



Alisa Vandenbosch
Specialty Group Coordinator
Quilt Seminars at Sea

866-573-6351
alisa@quiltcruises.com
<https://www.QuiltCruises.com>



New Zealand Adventure

Mar 23, 2024 - Apr 6, 2024

Dear Quilters and Friends,

2024 is starting out with a fabulous trip Down Under! We will sail aboard Holland America's elegant *Noordam* from Auckland, New Zealand to Sydney, Australia! From Kiwis to Kangaroos!

Our classes are held during our "at sea" days. As usual, we bring you a wide variety of classes from which to choose, taught by two award-winning, renowned instructors in the world of quilting:

Kathy McNeil and Gyleen X Fitzgerald!

Best wishes,

Alisa Vandenbosch & Amy Ross

Quilt Seminars at Sea

Trip Summary

March 23 - Saturday

5:00 PM Sail from Auckland on a New Zealand Quilting Adventure!
Auckland - The City

March 24 - Sunday

8:00 AM Arrive at Tauranga
5:00 PM Depart from Tauranga
Welcome and Getting to Know You!

March 25 - Monday

8:00 AM Arrive at Gisborne
5:00 PM Depart from Gisborne

March 26 - Tuesday

8:00 AM Arrive at Napier
5:00 PM Depart from Napier

March 27 - Wednesday

7:00 AM Arrive at Wellington
7:00 PM Depart from Wellington

March 28 - Thursday

8:00 AM Arrive at Lyttelton
5:00 PM Depart from Lyttelton

March 29 - Friday

8:00 AM Arrive at Port Chalmers (Dunedin)
6:00 PM Depart from Port Chalmers

March 30 - Saturday

Fjordland National Park

March 31 - Sunday

At Sea
9:00 AM Full Day of Quilt Classes: Option 1 - English Paper Piecing Elegance - elegance english paper piecing supply list.pdf
9:00 AM Full Day of Quilt Classes: Option 2 - Sea Turtle - Sea turtles new zealand.pdf

April 1 - Monday

At Sea
9:00 AM Full Day of Quilt Classes: Option 1 - Big Stitch on Any Quilt - Big Stitch on Any Quilt Supply List.pdf
9:00 AM Full Day of Quilt Classes: Option 2 - Art Media Adventure - Art Media Adventure.pdf

April 2 - Tuesday

8:00 AM Arrive at Hobart Tasmania
10:00 PM Depart from Hobart Tasmania

April 3 - Wednesday

At Sea

9:00 AM Full Day of Quilt Classes: Option 1 - Stylized Hand Stitching on Garments

9:00 AM Full Day of Quilt Classes: Option 2 - Koala Delight - Koala delight.pdf

April 4 - Thursday

8:00 AM Arrive at Melbourne

6:00 PM Depart from Melbourne

April 5 - Friday

At Sea

Open Sewing | Sew & Tell Party

April 6 - Saturday

7:00 AM Disembark at Sydney

March 23 - Saturday



5:00 PM

Sail from Auckland on a New Zealand Quilting Adventure!

CARRIER

Holland America Line

Ship Information Named for the Northern compass point, *Noordam* features museum-quality art — from 19th-century oils to contemporary photographs of music greats Dizzy Gillespie and B.B. King. Explore the world's wonders through BBC Earth Experiences. Enjoy regional cooking demonstrations and food and wine tastings with EXC Port to Table programming. Take yoga or Pilates in our Fitness Center. Savor the sounds of Music Walk™ and the delights of our specialty restaurants.



Auckland - The City

Auckland shines as the commercial and cultural centre of New Zealand. It is situated on 50 islands and 48 dead volcanoes which make it unusual and breathtaking to behold. Stroll along the water, a hike on a volcanic island, or a cruise through the glorious harbour are just a few ways to absorb the delights of the city. This city has the largest Polynesian population in the world, adding to its cosmopolitan, dynamic appeal. High-end fashion houses, sophisticated restaurants and chic bars compliment the abundance of outdoor activities.

The mythical, magical natural beauty of New Zealand made it an obvious choice for the setting of the imaginary Middle Earth, in the films of "The Lord of the Rings" trilogy. This enchanting wonderland is filled with craggy mountains, rolling, rustic hills, endless green meadows, gentle beaches and dramatic cliffs. It is a mecca for outdoor enthusiasts, with pursuits from rock climbing and scuba diving, to parasailing and white water rafting. Horse riding is also a popular activity in New Zealand. If you want to create a "Lord of the Rings" experience - of galloping across Middle Earth - this is the perfect place to do it! Auckland has more boats per capita than any other city in the world, which explains the national obsession of sailing. Home of America's Cup, boating becomes an infectious pastime to almost every visitor who crosses its shores.

This luscious leafy city is a joy to explore. Its infectious energy emerges in the open and affable population and lively activities. Kiwis are proud of their country. They adore visitors and love to rave about this glorious city. Don't be surprised if you make new friends among the locals!



March 24 - Sunday



8:00 AM

Arrive at Tauranga

Tauranga, New Zealand, lies southeast of Auckland and is an adventure-lover's paradise. Originally settled by the Māori peoples, this vibrant city is a popular destination for hiking, kayaking, biking, golfing, and everything active. Hike up Mount Maunganui for stunning panoramic views of the city below, then hit nearby Mount Maunganui Beach to soak up the sun or play in the sand. Head to the Lake McLaren canyons for a unique nighttime kayaking tour, where you'll catch a glimpse of luminescent glowworms. Visit Waimarino Water & Adventure Park at Wairoa River for a variety of thrilling amusements, including a massive water slide and human catapult, and sporty activities like beach volleyball, paddle boarding, and rock climbing. Explore Tauranga and find your inner thrill-seeker!



5:00 PM

Depart from Tauranga



Welcome and Getting to Know You!

We'll have fun/games and SEW-cial events along the way!

March 25 - Monday



8:00 AM

Arrive at Gisborne

The small town of Gisborne, on the east coast of New Zealand's North Island, claims several firsts: As the easternmost town in the country, it's the first to see the sun rise, and it was the first place in New Zealand spotted by the British explorer Captain James Cook, in 1769. (Polynesian sailors had arrived centuries earlier.) The Gisborne region, also known as Tairāwhiti, has one of the largest populations of Māori people in the country, and it offers many opportunities for visitors to learn about the indigenous culture of these descendants of the Polynesian settlers and see their art. While most New Zealand residents speak at least some phrases in the Māori language—travelers are often greeted with "Kia ora," a welcome that means "Have life and be well"—here it is the primary language for many residents. The Tairāwhiti Museum provides an excellent introduction to the culture of the Māori and that of other communities living in and near Gisborne. Beyond the town itself, the area's long stretches of sand and protected breaks draw surfers, swimmers and sunrise watchers. This part of the country is also famous for its wines, in particular chardonnays, whose grapes thrive in the mild climate and limestone-rich soil.



5:00 PM

Depart from Gisborne

March 26 - Tuesday



8:00 AM

Arrive at Napier

On the east coast of North Island, Napier is considered the "Art Deco capital" of New Zealand and the gateway to the Hawke's Bay wine region, whose popular varietals include pinot gris and syrah.



5:00 PM

Depart from Napier

March 27 - Wednesday



7:00 AM

Arrive at Wellington

On Cook Strait sits Wellington, New Zealand's charming windy city. Must-sees here include the waterfront, the lovely beaches, and the Wellington Cable Car that takes riders to botanical gardens. For cultural exposure, visit The Museum of New Zealand Te Papa Tongarewa, with its Maori national treasures and art gallery. Wellington Zoo is another key attraction, and features Tahi, a one-legged kiwi, as its mascot.



7:00 PM
Depart from Wellington

March 28 - Thursday



8:00 AM
Arrive at Lyttelton

Lyttelton is the largest settlement on Lyttelton Harbour, an inlet on the northwestern side of Banks Peninsula, and provides a frequent landing spot to those who are Christchurch bound.



5:00 PM
Depart from Lyttelton

March 29 - Friday



8:00 AM
Arrive at Port Chalmers (Dunedin)

Much of New Zealand feels like England, by way of Polynesia. There are a few exceptions, though, such as the town of Akaroa, a former French settlement, and the distinctly Scottish city of Dunedin, named after the Scottish Gaelic name for Edinburgh. After Dunedin was founded in 1848, city surveyor Charles Kettle attempted to impose Edinburgh's New Town grid plan on the growing city. But the Otago Peninsula's hilly landscape proved challenging—for evidence, note that Dunedin has one of the world's steepest streets (Baldwin Street). The volcanic remnants around the harbor make for a dramatic backdrop.

Dunedin's prominence during the gold rush in the late 19th century resulted in many grand Victorian and Edwardian buildings. Thanks to the beautiful University of Otago (the country's oldest), there's a large student population to keep the city vibrant and modern. But Dunedin's heritage is always proudly on display: The magnificent Dunedin Railway Station and Larnach Castle have been restored to their full glory, and the fascinating Toitu Otago Settlers Museum provides a glimpse into the lives of early residents. Outside the city, the Otago Peninsula is lined with scenic beaches and home to rare birdlife like the royal albatross and yellow-eyed penguin.



6:00 PM
Depart from Port Chalmers

March 30 - Saturday



Fjordland National Park

By far the largest of New Zealand's 13 national parks, Fiordland National Park is widely considered to be one of the country's most beautiful locations. It covers roughly 1.2 million hectares of lakes, mountains, rainforests, and more than a dozen fiords; the most notable is Milford Sound.

March 31 - Sunday



At Sea
Enjoy this day at sea as you travel to your next port of call.

9:00 AM - 6 hr 30 min



Full Day of Quilt Classes: Option 1 - English Paper Piecing Elegance

Gyleen X Fitzgerald

It's a Polygon Affair! Learn English Paper Piecing technique to make a fancy

pieced hexagon. Explore your creative side as you color or fussy cut the polygon shapes. Come relax, the class includes just about everything you need for a bright and colorful hexagon quilt.

We'll colorize and stitch the 1st block together, then the stitching is at your leisure. The full paper piece pack includes papers for the 12 sampler blocks and connectors.

Lunch break from 11:30AM-1:00PM

There are no sewing machines provided or required for all classes during this seminar.



9:00 AM - 6 hr 30 min

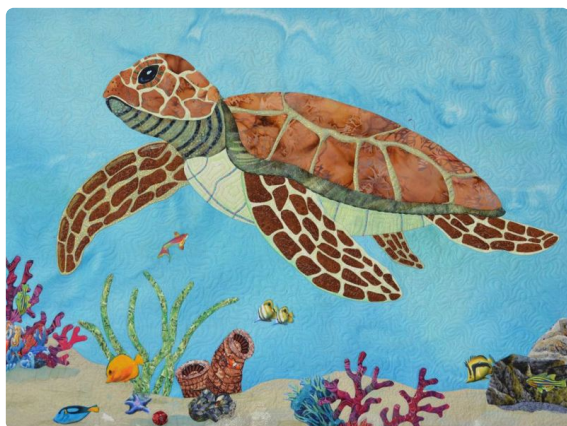
Full Day of Quilt Classes: Option 2 - Sea Turtle

Kathy McNeil

Step into the world of pictorial quilting. Kathy has won major awards in international competition with her pictorial quilts. Begin with the steps of layered appliqué. We will be learning two methods of appliqué. - Easy turned edge Applique for the larger shapes and raw edge fused for the smaller details. Kathy will demonstrate her fabric paint crayons to add lovely hints of shading. We will finish with a discussion of how to make coral reef features and how to quilt pictorial quilts. Add novelty fussy cut fish to personalize your under the sea quilt.

Lunch break from 11:30AM-1:00PM

There are no sewing machines provided or required for all classes during this seminar.



April 1 - Monday



At Sea

Enjoy this day at sea as you travel to your next port of call. .



9:00 AM - 6 hr 30 min

Full Day of Quilt Classes: Option 1 - Big Stitch on Any Quilt

Gyleen X Fitzgerald

In this workshop students will learn three different “fast” hand-quilting stitches to use alone or as an added design element to machine quilting. Gain knowledge on which needle to use, thread choices and how to select and use the right stencil. By the end of class, students will have developed a personal “hand” stitch.

Lunch break from 11:30AM-1:00PM

There are no sewing machines provided or required for all classes during this seminar.



9:00 AM - 6 hr 30 min

Full Day of Quilt Classes: Option 2 - Art Media Adventure

Kathy McNeil

This playful, art sampler workshop will introduce you to the joys of using different art mediums to enhance your quilting projects. Kathy will demonstrate, and you will get to try -metallic Tsukineko inks, foiling, Ink tense pencils, Seta silk transparent fabric paints, water color paint crayons for over dying and shading. Optional purchase of a 15 fabric paint crayon set available.

Lunch break from 11:30AM-1:00PM

There are no sewing machines provided or required for all classes during this seminar.



April 2 - Tuesday



8:00 AM

Arrive at Hobart Tasmania

Tasmania, once the butt of many jokes, is finally cool. The little Australian island is home to stunning landscapes, old-growth forests and exceptional local produce. Lording over all this goodness is Hobart, the island's creative capital. Although its remoteness might once have made it feel provincial, the city has truly come into its own in recent years. It's got one of the world's best museums of contemporary art, vibrant markets, a cosmopolitan dining scene and eclectic music festivals. It's also achingly beautiful, with a natural harbor setting and rugged Mount Wellington looming in the background.

The city is compact enough to easily explore on foot. Start at the sandstone area of Salamanca Place with its hip galleries, artist studios and bustling cafés and bars, and then roam the quaint streets of Battery Point, one of Hobart's oldest neighborhoods. Immerse yourself in nature at the gorgeous Botanical Gardens or head out of town to learn more about Tasmania's dark—but fascinating—past. Fuel up on the freshest seafood straight from the Southern Ocean down at the waterfront, or feast on gourmet Tassie produce at one of the many excellent restaurants in town. Whatever you choose to do, we promise you won't be bored.



10:00 PM

Depart from Hobart Tasmania

April 3 - Wednesday



At Sea

Enjoy this day at sea as you travel to your next port of call.



9:00 AM - 6 hr 30 min

Full Day of Quilt Classes: Option 1 - Stylized Hand Stitching on Garments
Gyleen X Fitzgerald

Full Information to Come!

Lunch break from 11:30AM-1:00PM

There are no sewing machines provided or required for all classes during this seminar.



9:00 AM - 6 hr 30 min

Full Day of Quilt Classes: Option 2 - Koala Delight

Creating this cuddly Koala will teach how much fun and easy appliqué can be. Learn to turn your edges with the Appliquick system. It is the easiest, fastest and most precise method of applique. Edges are turned over Appliquick interfacing, which remains in your piece, creating additional loft and dimension. Precision with small shapes has a swift learning curve with this system. Learn about the benefits of UNIT applique. Enhance the visual impact of your Koala by adding shading with fabric paint crayons.

Lunch break from 11:30AM-1:00PM

There are no sewing machines provided or required for all classes during this seminar.



April 4 - Thursday

**8:00 AM****Arrive at Melbourne**

A vibrant cultural center in the land “Down Under,” Melbourne, Australia will entice you with its aromatic cafés, lush nature parks, immersive museums, and dedication to the arts.

Situated on the southern coast of the Australian continent, the warm sands and turquoise waters of Brighton Beach, which hugs Port Phillip Bay, invites you to relax and sunbathe. An array of colorful and vintage bathing boxes lines the shore and makes for a vivid photo op. North of Brighton Beach, St. Kilda Beach has amusements galore, including the iconic wooden coaster of Luna Park and an amazing view of the sunsets on St. Kilda Pier. Head to the pier's breakwater to catch a glimpse of some St. Kilda penguins, who frequent its sturdy rocks at night.

The many diversions of the city center are guaranteed to entertain and delight! From the bustling Queen Victoria market, filled with delectable baked goods, fresh fruits and veggies, and unique souvenirs, to the stunning National Gallery of Victoria, whose thousands of distinct art pieces are illuminated by the glow of a stained-glass ceiling, Melbourne is a cultural and recreational haven. Stroll through quaint boutiques within the Block Arcade, learn about the city's love of cricket at the National Sports Museum in the Melbourne Cricket Ground arena, or immerse yourself in the educational exhibits at the ever-popular Scienceworks Museum.

Melbourne's natural beauty will astound and enchant you. Make a quick trip east of Melbourne to explore Yarra Valley, which offers dozens of wineries and rich Australian wines to sample. Steps from the city center, the Royal Botanic Garden encompasses an almost hundred-acre park filled with native flora and is a great spot to unwind after a long day of exploration. Follow the coastline west to find resplendent waterfalls and national parks, including the Great Otway National Park and Port Campbell National Park, where hiking, canoeing, and a whole host of outdoor activities await.

Melbourne is the perfect metropolitan hub for many Australian adventures!

**6:00 PM****Depart from Melbourne****April 5 - Friday****At Sea**

Enjoy this day at sea as you travel to your next port of call. This is an opportunity to swim, catch some sun on deck or take advantage of the many activities that are onboard your ship. Eat heartily, take a nap and get ready for the next port of call ! This is what makes cruising so great.

**Open Sewing | Sew & Tell Party**

We'll have the day to work on our projects, followed by an early evening **Sew & Tell Party**! We'll show off everything that we have worked for during the week, and celebrate with our new friends.

April 6 - Saturday**7:00 AM****Disembark at Sydney**

Sunshine, breathtaking landmarks and a distinct energy are just a few of the things to love about Sydney, the capital of New South Wales.

World-class restaurants, famous beaches, and iconic landmarks like Sydney Opera House and the Harbour Bridge are just the starting point. Day trips provide even more Australian wonder, from the pristine sands of Palm Beach to the forest walks of the Blue Mountains. And don't miss the Hunter Valley wine region, with over 120 wineries.

Recommended activities in Sydney include harbor cruises, multiple National parks, Royal Botanic gardens, Taronga Zoo, and Museum of Contemporary Art Australia. Major events such as Vivid Sydney and Sydney Festival draw in thousands of visitors annually.

Information & Documents



Trip Information and Prices



Instructor Biographies



Registration Form

Cruise Pricing

We are pleased to offer a special cruise rate for all passengers aboard the 2024 New Zealand Adventure Quilt Seminar at Sea.

Your Quilt Seminar at Sea includes:

- Award-winning quilting instructors Gyleen X. Fitzgerald and Kathy McNeil
- Numerous class choices
- Fabulous Holland America cruise
- Autograph party with the instructors
- Sew & Tell at the Farewell party
- Challenge Block Contest
- “Sewcial” events onboard
- Souvenir Tote Bag

Your cabin

Your cabin will be modern and cheery whether you choose a more economical inside cabin or a room with a view. You can even have your own private balcony if you choose, or a penthouse suite. Each cabin has two lower beds (which can be arranged into a Queen or 2 Twin beds), a TV, safe, refrigerator and bathroom with a shower and/or tub. Cabins which are designed for the physically challenged are also available.

Prices and cabin options

For more information on room types and locations, please refer to the [Noordam deck plan](#).

<i>Room Type</i>	<i>Cost Per Person (Double Occupancy)</i>	<i>Cost Per Person (Single Occupancy)</i>
Standard Inside Forward/Aft –L	\$2,499	\$4,189
Large Inside Midship – J	\$2,579	\$4,299
Large Outside Forward/Aft – D	\$2,929	\$4,763
Large Outside Midship – C	\$2,969	\$4,835
Verandah Forward/Aft – VD	\$3,669	\$6,789
Verandah Midship – VA	\$3,789	\$7,029
Signature Suite - SS	\$4,799	\$9,049
*Neptune Suite – SA	\$7,319	\$14,089

**Includes Suite Amenities*

Looking for an “All-Inclusive” package for your cruise?

Purchase Holland America’s “Have It All” package for only \$50 per person, per day of the cruise. This valuable package includes the Signature Beverage package, Wi-Fi Surf package, 2 Nights of Specialty Dining and a \$200 Shore excursion credit per person.

Please note that if this package is selected, ALL persons traveling together in one stateroom must purchase this package. For more details [click here](#)

***Rates are per person, cruise only in USD.** If you are a single and would like to share a cabin, we can assist you with finding a roommate. The rate for the third person in the cabin is \$4,219 for inside cabins, \$3,349 for outside cabins and \$3,469 for verandah or suite categories. Other cabin categories are also available, including the penthouse suite (call for pricing).*

Costs not covered in the cruise price

Port charges are included in the above prices, however government fees, fuel surcharges, and taxes estimated at \$425 per person are additional.

Other items not covered in the cruise cost are kit fees for each class, plus items of a personal nature such as photographs, laundry, massage, as well as shore excursions, alcoholic beverages, sodas, or tipping. Holland America applies a service charge for tipping to your account on board at the rate of at least \$16.50 per guest per day. All service personnel on board receive gratuities from this service charge, so no additional tipping is necessary except for bar drinks and spa services which have “as-you-go” service charges added separately.

Deposit & final payment

A deposit of \$600 per person is needed to guarantee your reservation. (\$100 per person is non-refundable). Final payment will be due no later than December 14, 2023. Payments may be made by check (payable to AAA Travel), or by major credit card.

Cancellation

The cruise cancellation policy is as follows:

Before 100 days prior to the cruise: \$100 per person, non-refundable

From 99 days to 61 days prior to the cruise: 50% per person, non-refundable

From 60 days to 31 days prior to the cruise: 75% non-refundable

There is no refund within 30 days of sailing.

***Above cancel fees apply to the cruise portion only.** If you have purchased airfare, pre or post cruise accommodations, tours, ground transportation or any other items related to this cruise they may have different cancelation policies than the cruise. Please contact us for details.*

Travel Information

What to wear

Being casual and comfortable is a part of life on the *Noordam*. Weather in the South Pacific region can be hot during the daytime, yet cool in the evening—the “layered look” is a must! You may need a light jacket for both cool weather and potential rain. (A sweater may also be desired for comfort in the air conditioned public areas.) The temperature in each cabin is individually controlled for your own comfort. Bring comfortable shoes to wear in port, streets are often uneven or rough. There are three formal nights (black tie not required, but suit and tie for gents), and other nights are smart casual nights no jeans or T-shirts in the dining room). We will have early dining reserved for the group. If you don’t want to participate in the formal nights, you have the option of dining casually on the Lido deck.

Travel to Auckland and from Sydney

We can arrange airline tickets and other personalized travel. We are able to quote fares for all airlines and look for the best prices. Transfers from the airport to the cruise ship and back are available at a minimal charge. Pre and post-cruise packages are available at an additional cost for those who would like to arrive in Auckland a day or two early, or stay in Sydney after the cruise. We will also offer custom hotel packages and touring both before and after the cruise; those details will be mailed to you at a later date.

Trip Insurance

The purchase of trip cancellation, travel accident and baggage insurance is strongly recommended. There are many uncertainties and unforeseen circumstances involved in our world; therefore we strongly recommend the purchase of travel insurance. It will provide coverage in the event of cancellation of your trip due to unforeseeable sickness, injury or death to you, a family member, or a traveling companion. In addition, it will provide coverage for travel accidents, baggage loss or damage, and medical evacuation. This insurance coverage is available at a rate, which varies by your age and the cost of your cruise. You will be completely covered, waiving all pre-existing conditions, only if the insurance is purchased at the time of deposit, and you cover the full amount of your cruise, including taxes and fees. Please complete the section on the registration form (**online** or **pdf**) regarding insurance. **We cannot accept your registration unless this is completed and signed.**

Immigration Requirements

A passport that is valid for at least six months beyond your return date is required for travel. Electronic Visas for Australia and New Zealand are also required for this journey. Non-US citizens must have a valid passport and any necessary visas. Legal names must be correct on all documents. Lack of proper ID will result in denial of embarkation; therefore all passengers are responsible for necessary identification. If you have access to the Internet, the following website offers excellent information regarding applying for and renewing passports: http://travel.state.gov/passport/passport_1738.html. If you need to obtain a certified copy of your birth certificate: <http://www.vitalchek.com> is a helpful website.



Gyleen X. Fitzgerald

Baltimore, MD

www.colourfulstitches.com

Gyleen was born in Philadelphia, PA but grew up in Taiwan and Japan. She obtained a Bachelor of Science degree in Chemical Engineering at Drexel University and opened Colourful Stitches in 1999.

Gyleen was born in Philadelphia, PA but grew up in Taiwan and Japan. She obtained a Bachelor of Science degree in Chemical Engineering at Drexel University and opened Colourful Stitches in 1999.

Those formative years in the Far East developed her love for simplistic artistry. She began needlework at the very young age of four and has since pursued artistic expression in drawing and quilt making. Her quilts blend colour, pattern and texture to provide a contemporary essence to traditional quilting.

Her strength as a quilter is demonstrated by the infusion of engineering tools and techniques to simplify visually complex quilts. Her written works center around Haiku poetry, Quilt project books, patterns and magazine articles and of course the crème de la crème, children's books.

As an artist, she has achieved "Best of Show" recognition; as a writer and publisher, she has achieved award winning status with Quilts: Unfinished Stories with New Endings. Gyleen has appeared on The Quilt Show and Lifetime TV promoting finishing antique quilts and the new spirit of traditional quilting.

For Gyleen, quilting is the passion which colours her world as her writing journey continues.



Kathy McNeil

Tulalip, WA

www.KathyMcNeilQuilts.com

Kathy McNeil is an internationally award-winning quilt artist, teacher, author, and judge.

Hand appliqueing thousands of little scraps of fabric together by hand, she creates quilts that look like paintings. These wall hangings are inherently and symbolically full of love and comfort.

Often using over a hundred different fabrics in one composition, she revels in adding small details and surprises for the viewers to find. The quilting itself adds an additional element of texture to her work.

Her award-winning quilts are featured in museums, magazines, calendars, and international shows. Her quilts are in private and corporate collections.

REGISTRATION FOR NEW ZEALAND ADVENTURE

March 23 - April 6, 2024 QUILT SEMINAR AT SEA

~~~ PLEASE FILL OUT ONE FORM PER PERSON ~~~

**PASSPORT Name:** Dr/Mr/Mrs/Ms \_\_\_\_\_  
*First*
*Full Middle*
*Last*

I prefer to be known as (for nametag): \_\_\_\_\_ Birthdate (required): \_\_\_\_\_

Address \_\_\_\_\_ City \_\_\_\_\_ State \_\_\_\_\_ Zip \_\_\_\_\_

Phone ( ) \_\_\_\_\_ Email address (required for online check-in) \_\_\_\_\_

*A passport valid at least 6 months past the return date and electronic visas for Australia and New Zealand are required!*

**I am traveling in the same cabin with:** (first and last names) \_\_\_\_\_

**If you're traveling alone:** Would you like us to help find you a roommate? Yes No

**Travel Preferences:** I prefer: Interior Ocean-View Verandah Signature Suite Neptune Suite

Do you have a category preference? \_\_\_\_\_

Would you like to add the "Have it All" package for \$50 per person, per day? Yes No Undecided

Do you prefer twin (two) beds or one double bed? Twins Double Have you sailed with Holland America previously? Yes No

Special needs on board (handicap cabin, special dietary requirements, etc): \_\_\_\_\_

I/We are celebrating a special occasion on board. Date during cruise to celebrate: \_\_\_\_\_ Circle one: Birthday Anniversary

**Payment:** This reservation is for \_\_\_\_\_ passengers. **Deposit is \$600 per person/\$100 non-refundable.**

\_\_\_\_\_ Check: Enclosed is my check for \$ \_\_\_\_\_ PAYABLE TO AAA TRAVEL

\_\_\_\_\_ Credit card: (Visa, Mastercard, American Express, Discover) Please charge \$ \_\_\_\_\_

Credit card number: \_\_\_\_\_ Exp Date \_\_\_\_\_

Name on the card: (PLEASE PRINT) \_\_\_\_\_ Security Code: \_\_\_\_\_

AAA Travel has my permission to charge my cruise and any other charges I authorize to my credit card.

(SIGNATURE AS IT APPEARS ON THE CARD) \_\_\_\_\_

**Final Payment Due Date: December 14, 2023**

**Insurance: Your registration form cannot be processed unless the following section has been completed AND SIGNED. Please EITHER indicate that you are purchasing the insurance, or that you are declining.**

\_\_\_\_\_ I am purchasing trip cancellation/travel accident insurance from Travel Guard and would like a quote emailed to me.

\_\_\_\_\_ I have been offered insurance to protect my travel investment and I am declining the purchase of this insurance. I, the undersigned, and my traveling companions listed below, whom I represent and have the authority to sign on behalf of, will not hold AAA Travel/Quilt Seminars at Sea or its agents responsible for any losses or expenses incurred by me resulting from cancellation of my trip, accident, sickness, stolen or damaged baggage, any default of the cruise line, or resulting from any other travel supplier-related problem.

Signed \_\_\_\_\_ Other travelers for whom I am signing:

Printed Name \_\_\_\_\_

**MAIL OR FAX THIS COMPLETED FORM WITH PAYMENT TO:**

**Quilt Seminars at Sea**  
**Attn: Alisa VandenBosch**  
**3605 132nd Ave SE**  
**Bellevue, WA 98006**  
**Fax: 1-425-460-9906**

**Questions? Email Alisa at [Alisa@QuiltCruises.com](mailto:Alisa@QuiltCruises.com)**  
**Or call toll free at 1-866-573-6351**

*We periodically photograph/film people participating in our program for publicity and promotional purposes. Attending the seminar gives your implied consent to the use of such photos without compensation or prior approval*

**CANCELLATIONS** The cancellation policy is as follows:

Before 100 days prior to the cruise: \$100 per person non-refundable

From 99 days to 61 days prior to the cruise: 50% of the fare per person non-refundable

From 60 days to 31 days prior to the cruise: 75% of the fare per person non-refundable

**There is no refund within 30 days of sailing.**



**Quilt Seminars at Sea**  
[www.quiltcruises.com](http://www.quiltcruises.com)

**CLASS REGISTRATION FORM**  
**NEW ZEALAND QUILT SEMINAR AT SEA March 23-April 6, 2024**

Name \_\_\_\_\_ Telephone (    ) \_\_\_\_\_

**Mark your 1st and 2nd choices for each day.** Classes are assigned according to first come so be sure to register early! Only one quilter per form (please photocopy for additional quilters). You have your choice of three full days of classes. If you would like free time any one of the days, please simply leave that day blank. **There are no sewing machines provided or required for all classes during this seminar.**

**Sunday, March 31 9:00am to 3:30pm , Lunch Break from 11:30am to 1:00pm**

|                |                                                    |                                                            |
|----------------|----------------------------------------------------|------------------------------------------------------------|
| _____<br>_____ | <b>Gyleen X. Fitzgerald</b><br><b>Kathy McNeil</b> | <b>English Paper Piecing Elegance</b><br><b>Sea Turtle</b> |
|----------------|----------------------------------------------------|------------------------------------------------------------|

**Monday, April 1 9:00am to 3:30pm, Lunch Break from 11:30am to 1:00pm**

|                |                                                    |                                                              |
|----------------|----------------------------------------------------|--------------------------------------------------------------|
| _____<br>_____ | <b>Gyleen X. Fitzgerald</b><br><b>Kathy McNeil</b> | <b>Big Stitch on Any Quilt</b><br><b>Art Media Adventure</b> |
|----------------|----------------------------------------------------|--------------------------------------------------------------|

**Wednesday, April 3 9:00am to 3:30pm, Lunch Break from 11:30am to 1:00pm**

|                |                                                    |                                                                    |
|----------------|----------------------------------------------------|--------------------------------------------------------------------|
| _____<br>_____ | <b>Gyleen X. Fitzgerald</b><br><b>Kathy McNeil</b> | <b>Stylized Hand Stitching on Garments</b><br><b>Koala Delight</b> |
|----------------|----------------------------------------------------|--------------------------------------------------------------------|

**CONDITIONS AND RESPONSIBILITIES:**

AAA Washington Travel is acting as an agent for suppliers of air and ground transportation, hotel accommodations, cruises, etc. AAA Washington Travel attempts to represent only those suppliers of travel that have shown an acceptable level of stability, dependability and responsiveness to problems and complaints. Nevertheless, AAA Washington Travel does not control the actions or failure to act of the suppliers it represents. Therefore, AAA Washington Travel shall not be responsible for any breach of contract, failure to comply with any laws such as the Americans with Disabilities Act (ADA), or any intentional or negligent actions or omissions on the part of such suppliers, which result in any loss, damage, delay, inconvenience or injury to travelers or travelers' companions or group members, including any losses resulting from any changes in suppliers' rates, unless marked on your invoice, tickets, or reservation itinerary as "Guaranteed," or any losses in connection with booking, reservation, connection, or scheduling problems or in connection with the handling or loss of baggage or other personal effects. AAA Travel shall not be responsible for any injuries, damages, or losses caused to any traveler in connection with terrorist activities, social or labor unrest, mechanical or construction failures or deficiencies, diseases, local laws, climatic conditions, abnormal conditions or developments, or any other actions, omissions, or conditions outside AAA Travel's control. By embarking upon his/her travel, the traveler voluntarily assumes all risks involved in such travel, whether expected or unexpected. Traveler is hereby warned of the above risks as well as possible travel industry bankruptcies, climatic disruptions, natural disaster, civil unrest, terrorist activities, and the possibility traveler may be unable to travel as scheduled because of personal emergency or medical problems, etc. Traveler is advised to obtain appropriate insurance coverage against these risks. Information is available through AAA Travel regarding travel insurance. Traveler's booking of reservations or utilization of tickets after receipt of this information will constitute a consent to the above and an agreement on his/her part to provide copies hereof to his/her travel companions or group members together with an explanation that if they embark, they do so subject to these Conditions and Responsibilities. AAA Washington Travel Group Seminars at Sea periodically photograph/film people participating in our program for publicity and promotional purposes. Attending the seminar gives your implied consent to the use of such photos without compensation or prior approval.

Agency#178018521



**Quilt Seminars at Sea**  
[www.quiltcruises.com](http://www.quiltcruises.com)

## Elegance: English Paper Piecing – Full-day Workshop

**Description:** It's a Polygon Affair! Learn English Paper Piecing technique to make a fancy pieced hexagon. Explore your creative side as you color or fussy cut the polygon shapes. Come relax, the class includes just about everything you need for a bright and colorful hexagon quilt. We'll colorize and stitch the 1st block together, then the stitching is at your leisure. The full paper piece pack includes papers for the 12 sampler blocks and connectors.

**Class kit fee:** Starter kit (needles, fabric glue, thread and felt), paper pieces pack and Elegance sampler booklet. (\$81 includes shipping)

**Fabric:** You will need 2" and some 3¼" strips. Small prints, solid and semi solids are perfect. I used leftovers from a jelly roll and 5" charm pack.

**General supplies:** Small scissors, needle threader, seam ripper and thimble. Thread if you have your preference.



**Gyleen's thoughts:** Oh, what fun it is to just sit and stitch. Each fancy pieced hexagon block can be used alone or you can add more to make a wall-hanging. If you're selecting fabric, I think any color palette would work. The key is the scale and variety of the print. Bits and pieces of fabric from your stash will do the trick when working in miniature with paper pieces.





## **New Zealand sea life - Sea Turtles.**

---

*Leatherbacks are the most widely spread and have been recorded as far south as Fiordland.*

**Step into the world of pictorial quilting.** Kathy has won major awards in international competition with her pictorial quilts. Begin with the steps of layered appliqué. We will be learning two methods of applique. - Easy turned edge Appliquick for the larger shapes and raw edge fused for the smaller details. Kathy will demonstrate her fabric paint crayons to add lovely hints of shading. We will finish with a discussion of how to make coral reef features and how to quilt pictorial quilts. Add novelty fussy cut fish to personalize your under the sea quilt.

***Design concepts to learn include:***

Unit applique

Tips for Basic pattern making for all sea critters using base shapes.

Shading objects to increase the sense of form, using my favorite paint crayons.

Choosing fabrics for pictorial work

Adding 3-D texture and objects to your coral reef including- how sea fans can be made completely with thread.

Quilted in designs for pictorial quilting.

**Sea turtle pattern \$13.95 is required for this class.**

***Appliquick tools are required.***

**Bring your own Appliquick tools or purchase a Basic tool set from instructor.**

**\$59.00** - Includes set of Appliquick turning rods, glue pen, one refill and 1 unit of Appliquick interfacing. See this free YouTube video on my website for an introduction

[https://www.youtube.com/edit?o=U&video\\_id=1B4kh1L\\_dbg](https://www.youtube.com/edit?o=U&video_id=1B4kh1L_dbg) watch on -  
[www.kathymcneilquilts.com](http://www.kathymcneilquilts.com) or YOUTUBE

**Supplies for all students to bring on cruise for this workshop.**

*If bringing your own Appliquick supplies, you will need turning rods, 1 unit of Appliquick stabilizer, Glue pen and two refills.*



1/2 yard of Lite Steam a seam 2. Available from instructor. \$6.00 Order with pattern.

- 4 inch or small size, sharp pointed scissors for cutting small complex shapes. Instructor has appliqué scissors for purchase on her website.
- Applique pins and hand applique needle. Instructor has both for purchase if you need them.
- Threads to match fabrics for your animal. 60 weight or silk threads.
- Soft pencil and fine sharpie marker.

*Pressing sheet for fused appliqué if you have one. Kathy will have a couple pressing sheets for the class to use.*

### **Fabrics that you will need to collect and bring with you for your turtle.**



**Optional** - sew Background together before cruise.

**Water** - 32 x 21 background light water batik.

**Sand** - 1/4 yd. light sandy beige to add along bottom.

Attach sand section to the water with gentle curves. Option 1. Turn under 1/4" seam allowance with Starch, and appliqué to water. 2. Slight curved piecing. We will just be working on the turtles during cruise.

**Turtle** - your turtle can be realistic or rainbow colored fanciful. Whatever makes you smile.

Top shell base and base shape for both back flippers - 1/4 yard of medium light green small scale print.

*Make sure it has enough contrast with the water to stand out.*

Top shell and head mosaic plates - 1/4 yd Golden brown batik or print

Top shell Rim edge - 8" x 18" piece that compliments green used for base. Go darker.

Bottom under shell - 1/4 yd. of creamy light green with very little print.

Front flippers - 1/4 yd lighter green small scale print. *See value changes in examples below. Try to have contrast between this print and the one used for your under shell. The sides meet and we want them to separate visually.*

Mosaic shapes on flippers - 1/4 yd. Medium to darker brown in

value than the golden brown used in the shell plates. (Do Not Use Fat Quarter)

Neck - 1/4 yd. batik or small scale print with some dots or other textural interest. 5" x 6" scrap of something darker for the wrinkles.

Head - will use the same light green fabric of the front flippers.

Eyes - KATHY HAS EYES PREPARED FOR YOU!

Reef - 8" x 8" pink for coral. 6" x 8" green for sea grass. Fussy cut 1-3 inch images of tropical fish or coral reef objects from a novelty print. *Kathy will have fishy prints to share.*

Examples of fabrics. Email me questions  
[kathymcneilartquilts@gmail.com](mailto:kathymcneilartquilts@gmail.com)





## **Big Stitch for Modern Quilts:** Full or Half Day Workshop

**Description:** In this workshop students will learn three different “fast” hand-quilting stitches to use alone or as an added design element to machine quilting. Gain knowledge on which needle to use, thread choices and how to select and use the right stencil. By the end of class, students will have developed a personal “hand” stitch.

### **Fabric Requirements:**

Small quilt top (18” square or placemat size or bigger) or soft 30” square light fabric

Batting

Backing

**Homework:** layer quilt top, batting and backing. Safety Pin or Hand thread baste

**Instructions:** handout (in kit)

**Special Tools:** \$25 kit (Perle cotton, stencil, marking pencils, Sashiko needles, handout) includes shipping.

**General supplies:** ¼” and ¾” masking tape (for straight lines – optional), quilting hoop (if you use one), thimble, safety pins, thread snips and anything else you may want for hand quilting.

**Gyleen’s thoughts:** If you don’t have a small quilt ready to go, what about using an orphan block? Just add borders so it’s about 18” square or so. Or you can make a quickie placemat. I don’t use a hoop but you may want to, so bring one. Don’t forget your thimble!

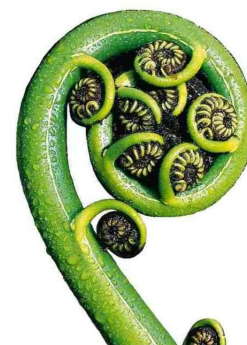






# Koru

The koru (Māori word for "loop") is a spiral shape based on the unfurling silver fern frond of the ponga plant. Koru symbolizes new life, growth, strength and peace. It is an integral symbol in Māori art, carving and tattoos.



## New Zealand birds and symbols, -an Art media adventure—

Introduction to paints, inks, foiling, and more fun things to try on fabric.

This playful, art sampler workshop will introduce you to the joys of using different art mediums to enhance your quilting projects. Kathy will demonstrate, and you will get to try -metallic Tsu-kinoko inks, foiling, Ink tense pencils, Seta silk transparent fabric paints, water color paint crayons for over dying and shading. *Optional purchase of a 15 fabric paint crayon set available.*

Practice painted appliqué on your pre-printed 15 x 15" square " block with Kathy's original design created specifically for this cruise. These colorful birds are Eastern Rosella's.

The block is pre fused and ready to add your border. This wall hanging that will always remind you of our amazing cruise.

**Look for wonderful Australian fabrics to buy on our trip. Add as a your or use aboriginal fabric blocks to surround the center block and make a larger wall hanging.**

### Bring from Home

Students must bring a small container for water to wash out your brushes.

Three paper towels

Note paper and pen

**Required kit- \$45.00 includes- We will call and arrange shipping your kit to you In February**

The pre printed NZ 15" x 15" block- already fused with lite Steam a Seam 2.

1 sealed container of Fabric medium.

1 set of 6 Ink Tense pencils and a scrubber brush best for this project. (\$31.00 alone)

Foil, 4 cotton prints for trying the fabric paint crayons.

Cotton sateen fabric piece to try seta silk paints.

Take home instructions for foiling and inktense.

Inktense pencils deliver vibrant and versatile color. Pencils provide added control for fine detail.

Ink-like pigments come alive when fabric medium is added.



## Koala Delight. 13 x 17" without borders.



Creating this cuddly Koala will teach how much fun and easy appliqué can be. Learn to turn your edges with the Apliquick system. It is the easiest, fastest and most precise method of applique. Edges are turned over Apliquick interfacing, which remains in your piece, creating additional loft and dimension. Precision with small shapes has a swift learning curve with this system. Learn about the benefits of **UNIT** applique.

Enhance the visual impact of your Koala by adding shading with fabric paint crayons.

**Pattern and fabric kit required. \$32.00.**

Includes \$12.00 pattern and all fabrics for your Koala and tree. *Some of the template shapes already have the interfacing template material pressed to your fabrics.....and cut out with a seam allowance ready to turn those edges*

**Apliquick tools are required for this class.**

[We will call and arrange shipping your pattern and fabric kit to you In February.](#)

**Bring your Apliquick tools or purchase a Basic tool set from instructor when order your pattern and fabric kit. \$59.00 tool set** - Includes two stainless steel Apliquick turning rods, glue pen, one refill and 1 unit of Apliquick interfacing.

See this YouTube video for an introduction

[https://www.youtube.com/edit?o=U&video\\_id=1B4kh1L\\_dbg](https://www.youtube.com/edit?o=U&video_id=1B4kh1L_dbg) watch on - [www.kathymcneilquilts.com](http://www.kathymcneilquilts.com)

**Supplies: Please bring the following items to class: 14 x 18" background fabric.**

Small, sharp 4" applique scissors- *Available for purchase from instructor*

Appliqué pins- *Available for purchase from instructor*

Hand appliqué needle-*Available for purchase from instructor*

Thread- light brown and medium grey thread *silk or 60# preferred.*

*If bringing your own Apliquick supplies, you will need turning rods, 1 unit of Apliquick stabilizer, Glue pen.*

Questions? email [kathymcneilartquilts@gmail.com](mailto:kathymcneilartquilts@gmail.com)



**Koala Delight.** 13 x 17" without borders.