

# Quilt Show



BEST OF SHOW

“Antique Wedding  
Sampler”  
by Karin Crawford







Jean Christensen  
Founder's Award  
for Hand Quilting



“Cheryl’s Grandmothers Garden”  
Pieced and Quilted  
by Cheryl Barlow



Quilt Fest 2019  
Viewer's Choice

“Cheryl's Grandmothers  
Garden”  
by Cheryl Barlow





# Best Use of Color

“Vintage Rose”

By Nancy Hutchinson





# Best Machine Quilting

“Thoroughly Modern Dottie”

by Karen Crawford

Quilted by Kim Peterson





# Patsy Sheldon Memorial



“Hidden Wells”  
by Linda Roderick



# Pieced Large – Apprentice 1st Place

“Ridin’ the Rails”  
by Shelley Koehler



**Pieced Large –  
Apprentice  
2<sup>nd</sup> Place**

**“Crimson  
Constellation”  
by Barbara Hiatt**





Pieced Large –  
Wizard  
1st Place

“Pony Express”  
By Cecilee Wilson



Pieced Large –  
Wizard  
2nd Place

“Bristle Creek  
Farmhouse”  
By Pamela White







Pieced Small –  
Apprentice  
1<sup>st</sup> Place

“Hidden Wells”  
by Tracy Amadio



# Pieced Small – Apprentice 2<sup>nd</sup> Place

# “Farm Girl Vintage” by Jennifer Parry





# Pieced Small – Wizard 1<sup>st</sup> Place

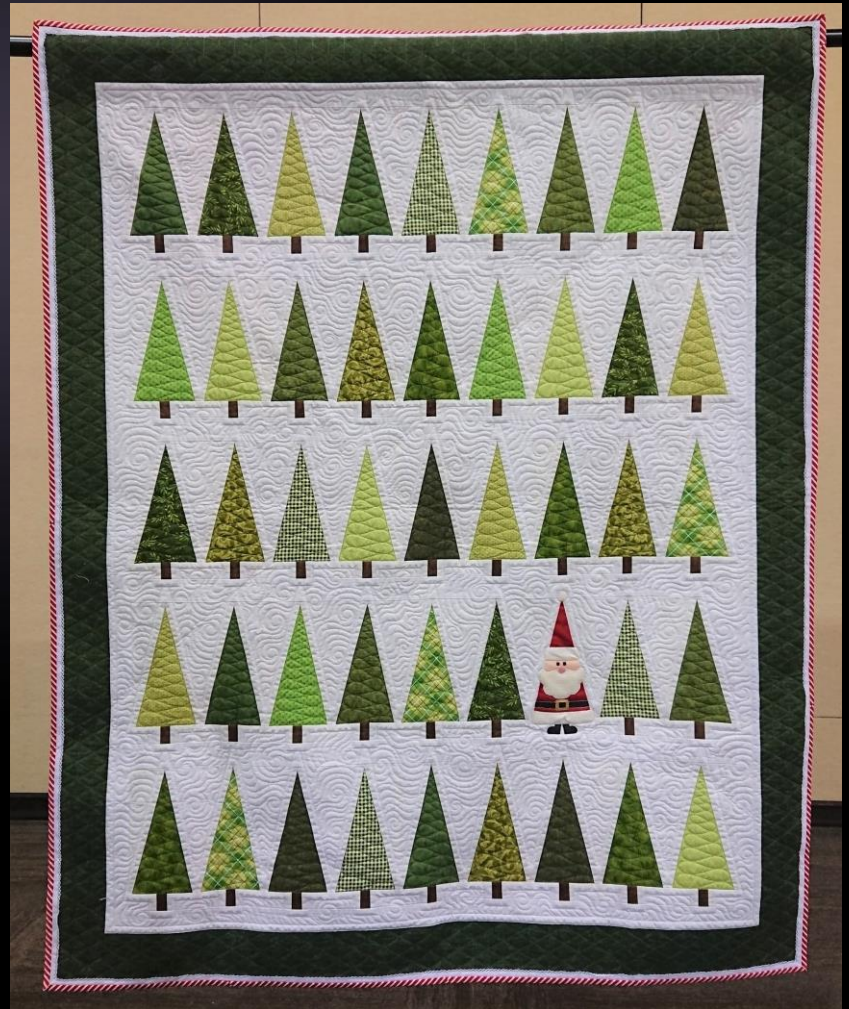


“Vintage Lone Star:  
UVQG Workshop  
Memories”  
by Shirley Olsen



Pieced Small –  
Wizard  
2<sup>nd</sup> Place

“Santa in the Woods”  
by Elise Larsen







# Applique – Apprentice 2<sup>nd</sup> Place

“Down on the Farm”  
by Diane Miller



# Applique – Wizard 1<sup>st</sup> Place

“Everlasting”  
by Helen Butler







# Applique – Wizard 2<sup>nd</sup> Place

“Bee Happy”  
by Pamela White





Small Wall Hanging —  
Apprentice  
1<sup>st</sup> Place

“Eyes into the Soul”  
by Marian Eason



Small Wall Hanging  
– Apprentice  
2<sup>nd</sup> Place

“Zebra”  
by Jolly Stanford





# Small Wall Hanging – Wizard 1<sup>st</sup> Place

“Mr Misty”  
by Shirley Olsen





**Art/Innovative –  
Apprentice  
1<sup>st</sup> Place**

**“Mischief’s Afoot”  
by Marian Eason**





Small Wall  
Hanging – Wizard  
2<sup>nd</sup> Place

“English Cottage”  
by Bea Kalasky





# Art/Innovative – Apprentice 2<sup>nd</sup> Place

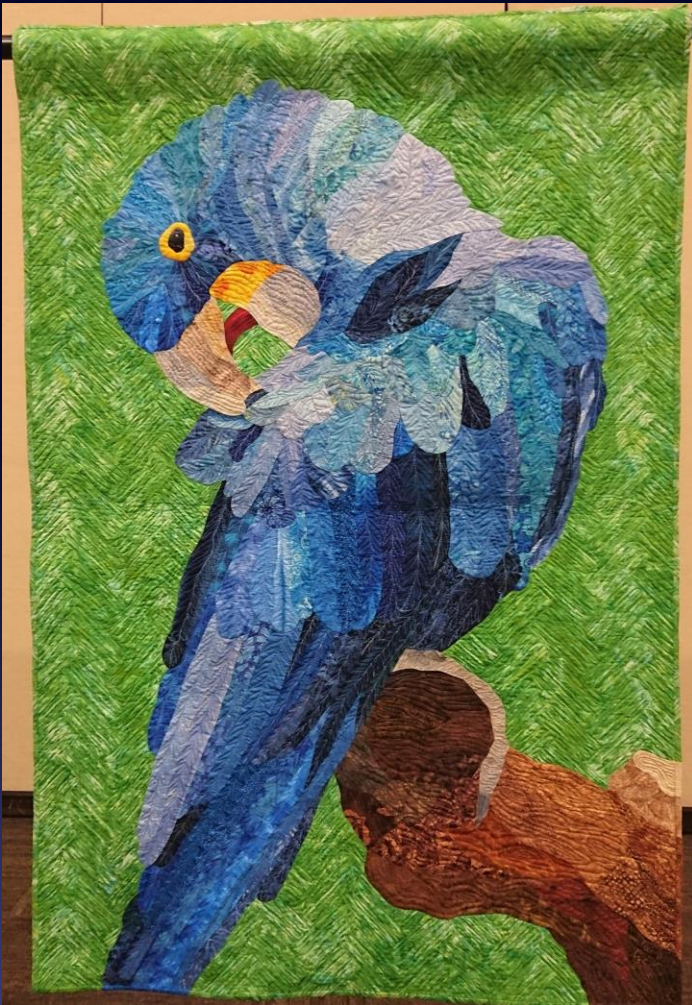
“Bee Kind”  
by Lorri Bashein



Art/Innovative  
– Wizard  
1<sup>st</sup> Place

“The Wave”  
by Carol Johnson





# Art/Innovative – Wizard 2<sup>nd</sup> Place

“Hyacinth Macaw”  
by Nancy Henderson



Modern –  
Apprentice  
1<sup>st</sup> Place

“Iridescence”  
by Michele Murdock



Modern – Apprentice  
2<sup>nd</sup> Place

“Twisting Rainbow”  
by Debbie Breivik





# Modern – Wizard 1<sup>st</sup> Place

“Twister”  
by Cecilee Wilson



# Modern – Wizard

## 2<sup>nd</sup> Place

“Sophisticated Pumpkins”  
by Elise Larsen





# Mixed/Special Technique – Apprentice 1<sup>st</sup> Place

“Hocus Pocus”  
by Sara Wright



**Mixed/Special  
Technique –  
Apprentice 2<sup>nd</sup> Place**

**“Be Dazzled”  
by Carolyn Hartman**







Mixed/Special  
Technique –  
Wizard 1<sup>st</sup> Place

“Hope Chest”  
by Linda Williams



Mixed/Special  
Technique –  
Wizard 2<sup>nd</sup> Place

“Imperial Blooms”  
by Lil Anderson



# Group – 1st Place

“Sun Bonnet Sue  
Makes a Quilt”

by Cheryl Barlow and  
the Dixie Quilt Guild





**Group  
2<sup>nd</sup> Place**

**“Blue Morocco”**

by Cindy Hutchison and the  
Ogden Quilt Guild





Theme – 1<sup>st</sup> Place

“Witching Hour”  
by Florence Evans





Theme –  
2<sup>nd</sup> Place

“Bewitched”  
by Tina Cox

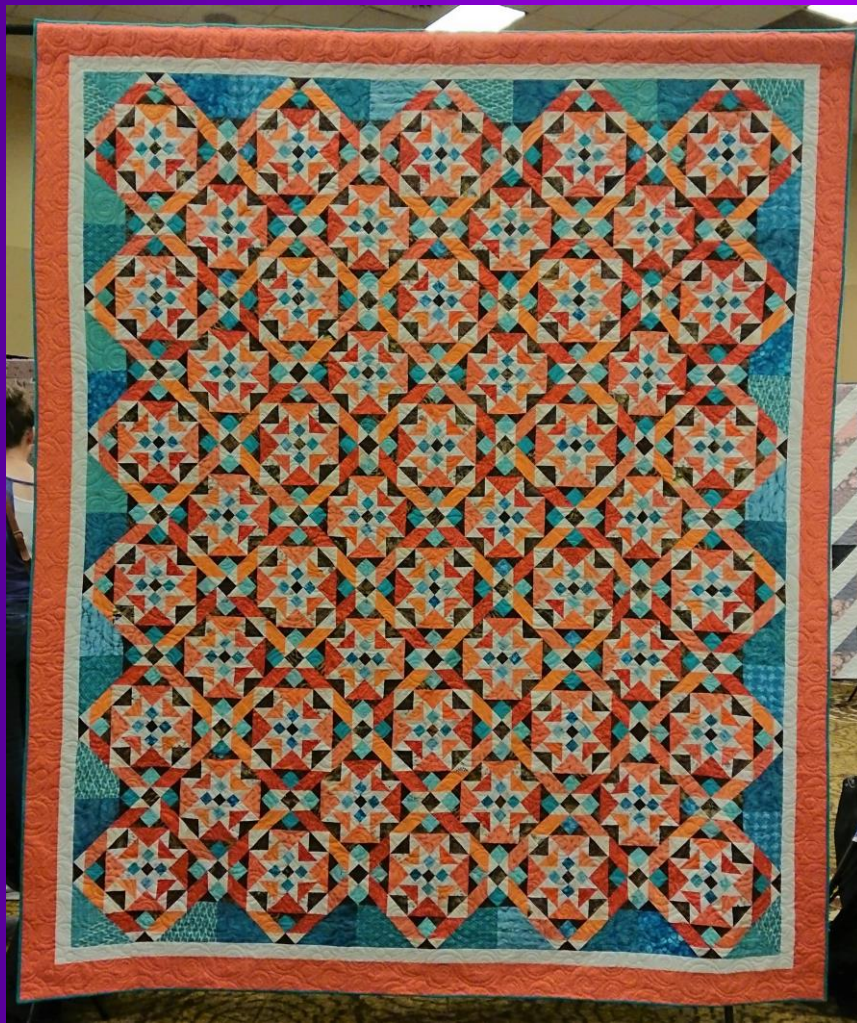
# National Teacher's Choice

Lura Schwarz

“Spirit of the Plains”  
by Amy Robertson







# National Teacher's Choice

Anelie Belden

"Southwest Beauty"  
by Patti Godot



# National Teacher's Choice Gloria Loughman

“Queen of Hearts”  
by Shirla Wheeler





Judge's Choice  
Bev DeMaria

“Delirious”  
by Kathy Porter



# Judge's Choice

Kaye Evans

“A Drink at Twilight”  
by Marsha Chappell





Judge's Choice  
Liz Teerlink

“Blue Star Beauty”  
by Marietta Paull





# Judge's Choice

Marie Eldredge

"Color Trip Around  
the World" by  
Cheryl Scott





Viewer's Choice –  
Panel Challenge  
1<sup>st</sup> Place

“Clotilda's Cottage”  
by Vanessa Moon  
and Aaryn Gullledge



Viewer's Choice –  
Panel Challenge 2<sup>nd</sup> Place

“Eerie Night”  
by Louise Mudd







Viewer's Choice –  
Panel Challenge 3<sup>rd</sup> Place

“Witchie Woman”  
by Cindy Hutchison



Viewer's Choice –  
Hat Challenge 1<sup>st</sup> Place

“Nancy's Hat”  
by Nancy Hutchinson





Viewer's Choice –  
Hat Challenge 2<sup>nd</sup> Place

“Sue's Hat”  
by Sue Tubbs

# Viewer's Choice – Broom Challenge 1<sup>st</sup> Place



Broom from “Sisters to Kanab” by Sylvia Lewis



# Viewer's Choice – Broom Challenge 2<sup>nd</sup> Place



“Nancy’s Broom” by Nancy Marple