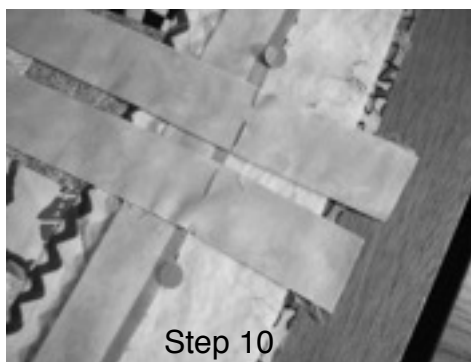
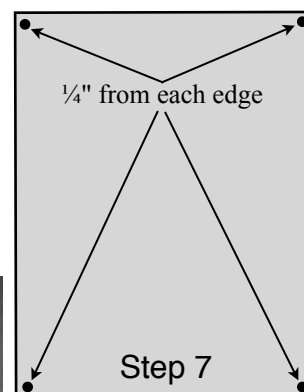
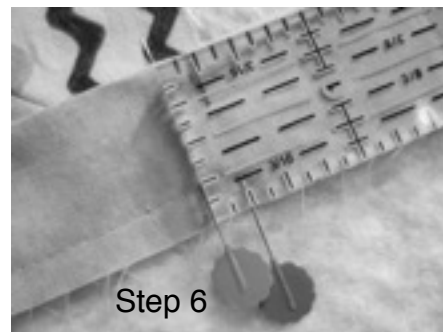


## No Tails Binding: Mitered Corners by Machine

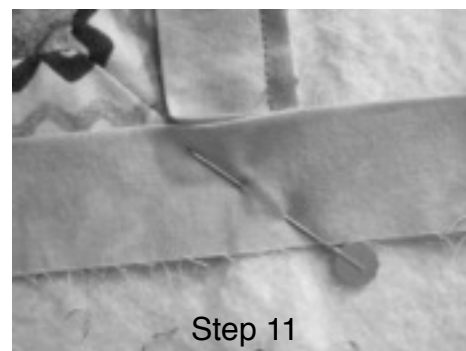
Cut 2¼"-(or 2½") wide binding the circumference of the quilt top *plus* at least 8". Sew to join strips and press wrong sides together.

### Part 1 - Sew the Binding to the Quilt

1. Lay the untrimmed quilt, face up, on a flat surface, smoothing out wrinkles.
2. To ensure that your quilt is "on the square," use a long ruler to draw straight lines along each side - around the entire perimeter - of the quilt. This straight edge is your guideline for sewing binding to the quilt.
3. Lay the binding across the width of the quilt, approximately in the center. Leave a 2" tail extending beyond both edges of the *quilt top*. Gently smooth and pat the binding flat.
4. Cut the binding strip 2" beyond the edge of the quilt top. Repeat, to make a second piece of binding for the *width* of the quilt.
5. Without moving the binding, insert a pin where the binding meets the drawn line.
6. Measure ¼" from the pin and mark another dot, where machine sewing should start/stop.
7. Focusing on the corner of the quilt top, measure ¼" from each side of the quilt top. Use a pin or mark a dot on all four corners.
8. Position the raw binding edges along the drawn line. Match the binding dot to the quilt top dot. Pin the binding in place.
9. Use a walking foot to sew a ¼" seam from dot to dot. Backstitch at both ends. Repeat to attach binding to the opposite end of the quilt.
10. Lay the binding across the *length*, or opposite dimensions of the quilt, through the middle. Use a pin to mark quilt top edges.



11. Repeat steps 3-9 to complete sewing binding strips to all four sides of the quilt. Refer to photo for pinning to make sure the binding stop/starts meet at the dot.
12. When four bindings are sewn to the quilt, each of the four corners will have two loose tails. These will be machine-sewn together to make mitered corners.



## Part 2 - Sew the Mitered Corners

1. At one corner, fold the quilt back onto itself (backside to backside) to make a diagonal fold. Align the binding tails. Pin to secure.
2. Lay a small ruler perpendicular to the binding to make a small indication mark on the binding fold at a point parallel and directly above where the stitching ends.
3. Tip a small ruler so the ruler corner point is positioned in the middle of the binding strip. The point should be an equal distance from both the drawn mark at the binding fold, and the end point of the stitching. Between each point the distance from the ruler corner point is  $\frac{1}{2}$ " to  $\frac{5}{8}$ ".
4. Draw along the corner of the ruler to make a visible line that forms a 45-degree angle. This looks like a tipped, backwards capital "L."
5. Sew on the drawn line being sure to backstitch at the fold, sew to pivot at the point, and continue to sew ending with backstitching.
6. Trim  $\frac{1}{4}$ " from the stitching to remove binding tails. Snip the tip to reduce bulk.
7. Repeat steps, marking, sewing, and trimming on three more corners to sew a total of four mitered corners.

### Finish Binding

From around the perimeter of the quilt, trim excess batting and backing  $\frac{3}{8}$ " ( $\frac{1}{2}$ " if using  $2\frac{1}{2}$ "-wide binding) from stitching line. Be sure not to rotary cut the binding corner! Turn the binding to the quilt back. Use a stiletto or point turner to pull out the points at each mitered corner. Admire your sturdy, machine-sewn mitered corners - you won't have to hand-sew them closed!

Using thread that matches the binding color, blind stitch to hand sew binding to the quilt back.

