



[Home](#) [Quilting Tips](#) [Contact Me](#) [Newsletter](#) [Patterns](#) [Links](#) [About Us](#) [Checkout](#)

## Appliqué

### Off Block Construction with Back Basting

This pictorial guide shows how to construct appliqué elements "off block" or "in hand" by using the back basting method. We will construct the sleigh in "Rose Sleigh" a block in the "It's a Baltimore Christmas" series.

A small, gold trim was applied to the inner curved edges of the sleigh. To first applique the sleigh using back basting and then to add the gold trim would have necessitated opening the outer edges of the sleigh to slide the gold trim under the seam allowance. Not wanting to open those edges I chose off-block construction for the body of the sleigh. This allowed me to turn under the gold trim at the same time that the outside edge of the sleigh was appliquéd.

Step 1: Trace the pattern on the back side of your background fabric. You may need to reverse the pattern. In the case of the "Rose Sleigh", it will look good facing either direction. You need not reverse it unless your personal preference is to do so.

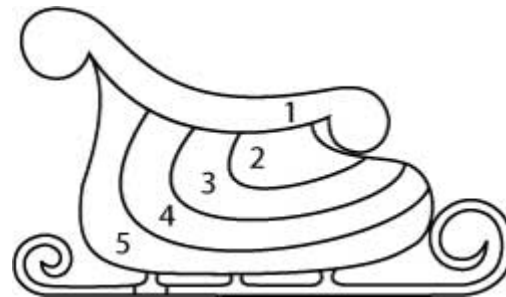


[Click here](#) to learn more about this block.



Step2: Using the [back basting method](#), appliqué the sleigh rail on to the background fabric. Set this piece aside.

Step 3: Select 5 coordinating fabrics for the sleigh. Number those fabrics as in the diagram to the right.



Step 4: Place the paper pattern (reversed if you choose) over a light source. You can use a light box, a window or a split table with a piece of glass and a lamp. Place fabric 2 over section 2. Be sure the fabric is large enough to allow for a 1/4" seam allowance all around. Trace section 2 onto the wrong side of your fabric. Set aside.

Step 5: Place fabric 3 right side down over the paper pattern. Imagine seam allowances on section 3. Be sure that the fabric is large enough to completely cover the patch plus seam allowances. Pin to the paper pattern so that the fabric doesn't move. Do not draw any lines on fabric 3 at this time.

Step 6: Place the prepared fabric 2 right side down over the section 3 fabric in it's proper location. That is, the right side of fabric 2 will be on top of the wrong side of fabric 3 and it will be above section 2 of the pattern. Pin fabric 2 to fabric 3. Remove the pins securing fabric 3 to the paper.

Step 7: Back baste along the curved line that you drew on fabric 2 between section 2 and section 3 . Your piece should look like the sample in Figure 1



Note:

- Section 2 has been drawn on fabric 2
- Section 2 fabric has been placed over the section 3 fabric. Both #2 and #3 fabrics are face down.



Figure 1

Step 8: Flip the fabric to the right side. Very carefully trim away the #3 fabric leaving approximately 1/8"-3/16" seam allowance on the section 2 side. (Figure 2) Appliqué this curve. Begin stitching in the seam allowance and end in the seam allowance. Do not start stitching before the seam allowance nor stitch beyond the seam allowance as the knots might be cut off when the seam allowance is trimmed.

Flip to the back and trim away fabric #2 leaving approximately 1/4" seam allowance.

Figure 3 shows the appliqué curve from the front. Figure 4 shows the back side after trimming.

- The curved line between sections 2 and 3 has been back basted.



Figure 2



Figure 3



Figure 4

1 [2](#) [3](#) [4](#)

[Privacy Policy](#)

Copyright © 2004 Connie Sue Haidle. All rights reserved.



[Home](#) [Quilting Tips](#) [Contact Me](#) [Newsletter](#) [Patterns](#) [Links](#) [About Us](#) [Checkout](#)

## Appliqué

### Off Block Construction with Back Basting

Step 9: Next we will place our sleigh on the paper pattern so that we can mark section 3. Place the pattern over the light source. Be sure that the fabric section 2 is directly over the paper pattern section 2.

Your light source may be enough to help you make this alignment. If not, you can use pins to help. Working from the back, place a pin in an intersection of two lines in section 2. (Figure 5)



Figure 5



Figure 6

Step 10: Place the pin through the paper pattern in the corresponding intersection. Pull the fabric up tight against the paper pattern. Select another intersection and repeat with another pin. Marking two - three intersections is usually enough to line up your fabric to the paper pattern. Some large pieces may need to be marked in more places.

Pin fabric sleigh to paper pattern. Remove the pins at the intersections.



Step 11: Trace section 3 on to the back of fabric 3. Rough cut around the section 3 pattern drawn on the backside of fabric 3. Allow at least 1/2 inch.

Repeat steps 5-8 for sections 3 and 4 using fabrics 3 and 4

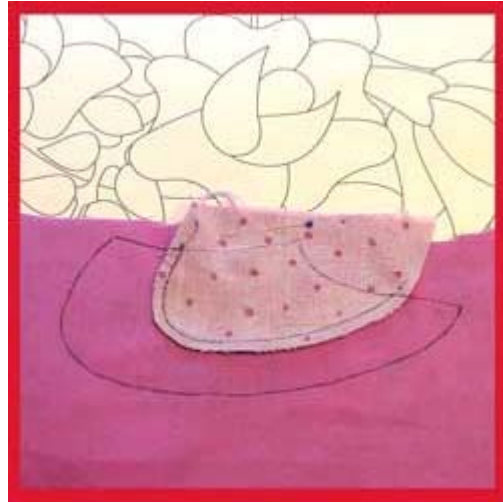


Figure 7



Figure 8

Figure 8 shows the back of the sleigh after repeating steps 5--7. Fabric 4 is face down. The sleigh which was rough cut from fabric 3 is face down on top of fabric 4. The curved line between sections 3 and 4 has been back basted.

Figure 9 shows the front of the sleigh after trimming away fabric 4. We are ready to appliqué the curve between section 3 and 4



Figure 9



Figure 10 shows the back of the sleigh after appliquéing the curve between sections 3 and 4. We are in the process of trimming our rough cut seam to a neat and even 1/4" seam.

Figure 10

Repeat steps 5-8 for section 5/fabric 5 . Figure 11 shows the front of the sleigh after appliqué the curve between sections 4 and 5. Figure 12 shows the back of the sleigh.

NOTE: The final outline of the sleigh around section 5 has not been drawn on the back of fabric 5. It is not necessary to draw that line as we have drawn it on the background fabric.



Figure 11



Figure 12

[1](#) [2](#) [3](#) [4](#)

[Privacy Policy](#)

Copyright © 2004 Connie Sue Haidle. All rights reserved.





[Home](#) [Quilting Tips](#) [Contact Me](#) [Newsletter](#) [Patterns](#) [Links](#) [About Us](#) [Checkout](#)

## Appliqué

### Off Block Construction with Back Basting

Trim: Next we will apply the gold trim to the sleigh. I used a small, round gold trim not a flat trim.

Place the trim next to one of the appliquéd curves of the sleigh. Place a gold, YLI #100 silk thread in your needle.



Figure 13



Figure 14

Whip stitch the trim into place being sure that it is snug against the seam.

Pull your stitches tight against the gold trim.



Figure 15



Figure 16

Figure 16 shows the sleigh after all trim has been applied.

Place the sleigh on the background fabric. You may use a light source to place the sleigh on the background or you may use the pin method to place the sleigh on the background. The pin method is similar to using the pin method that we used in steps 9 and 10 to place the sleigh on the paper pattern.

Working on the back of the background fabric, select an intersection on the sleigh. Place a pin in that intersection. (Figure 17)



Figure 17



Run the same pin through the corresponding intersection on the back side of the sleigh. Repeat for several intersections. (Figure 18) Pull the sleigh up tight against the background fabric.

Figure 18

I also like to pin next to the gold trim. I place the pin on the top of the sleigh (figure 19) and then check the back to be sure that the pin is on the line of the curve (figure 20). Once you are satisfied that the sleigh is in the proper location, pin the sleigh securely to the background. Remove the pins placed at the intersections.



Figure 19



Figure 20

[1](#) [2](#) [3](#) [4](#)

[Privacy Policy](#)

Copyright © 2004 Connie Sue Haidle. All rights reserved.



[Home](#) [Quilting Tips](#) [Contact Me](#) [Newsletter](#) [Patterns](#) [Links](#) [About Us](#) [Checkout](#)

## Appliqué

### Off Block Construction with Back Basting

With the partially constructed sleigh securely pinned in place against the background, back baste around the outer most edge of the sleigh (Figure 21).



Figure 21



Figure 22

Trim 1/8" - 3/16" away from the basted line. Leave the ends of the gold trim longer than the seam allowance. Leave them approximately 1/2" longer than the finished edge. The trim has a tendency to split and separate when turned under. The extra length will provide more to turn under and will be more secure.

It is not necessary to leave extra trim at the top where section #1 will cover the ends of the gold trim. These ends will not be turned under and will not separate.



Appliqué the outside edge of the sleigh. It will look similar to the sleigh to the right. When complete, appliqué section 1 using the back basting method.



This sleigh was constructed by starting with section number 2 and building up, appliquéing each section in turn on top of the next. The sleigh could also be constructed starting with section 5 and working towards section 2. In the latter case, section five would only be trimmed along the curve where it meets section 4. This curve would be appliquéed into place. The outer edge of the sleigh would not be trimmed until it had reached the stage of Figure 21.

Off block or in-hand construction is a technique well worth adding to our bag of appliquéing techniques. That it can also be done using the back basting method of preparation is just an added bonus.

[1](#) [2](#) [3](#) [4](#)

[Privacy Policy](#)

Copyright © 2004 Connie Sue Haidle. All rights reserved.