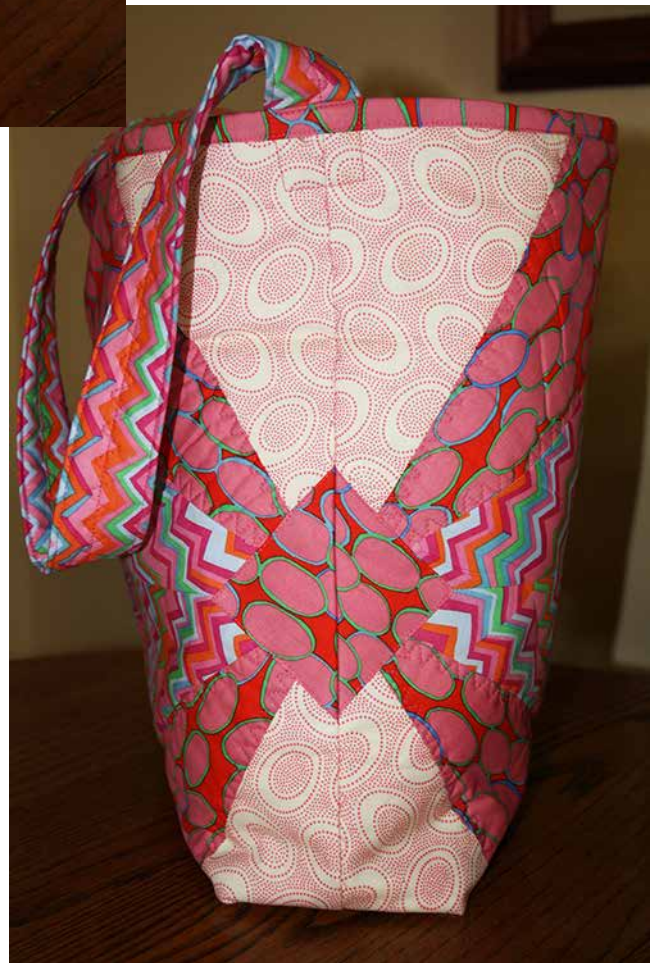


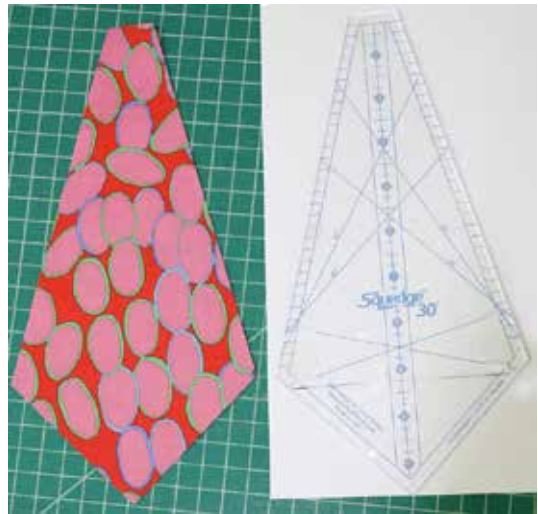
Squedge 30 Tote



Fabric	Cutting	Yardage
A	11 x width	$\frac{3}{8}$ yd
B	fussy cuts	$\frac{5}{8}$ yd
C	7 ½" x width	$\frac{1}{4}$ yd
Lining	18" x 36"	$\frac{1}{2}$ yd

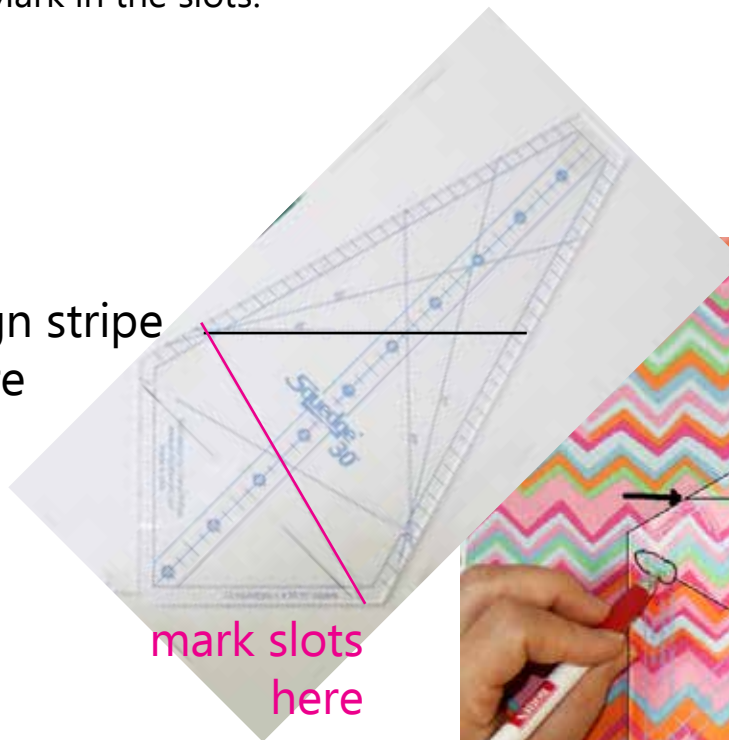


- Cut an 11" strip of Fabric A.
- Using the Squedge 30 tool, cut around all four sides to get a fabric Squedge piece.
- Cut eight Squedge 30 pieces.
- Cut partial Squedge pieces from Fabric B.
- Align the 45 degree line onto a portion of the stripe.
- Mark in the slots.



cut eight

align stripe
here



mark slots
here



- Cut around three sides of the tool.
- Cut the bottom of the Partial Squedge aligning the two slotted lines.
- Cut eight Partial Squedge pieces from Fabric B
Four as shown.
Four mirror image pieces.
- Cut the mirror image pieces by turning the Squedge tool over.

cut four



cut four

Cutting Partial Squedge Pieces

- Leave your fabric strip folded and cut two pieces at once.
- Place the slotted line on the edge of the fabric.



- Rotate the Squedge tool and align the slotted line to the top edge.
This lets you get the most from your fabric!



- By cutting two pieces at once, with wrong sides together, you get mirror imaged pieces.



- Sew the three pieces together to make a quadrant block.
- Make two.



- Sew the three pieces together to make the mirror image quadrant block.
- Make two mirror image quadrant blocks.



- Sew the mirror image blocks together to make a half block.

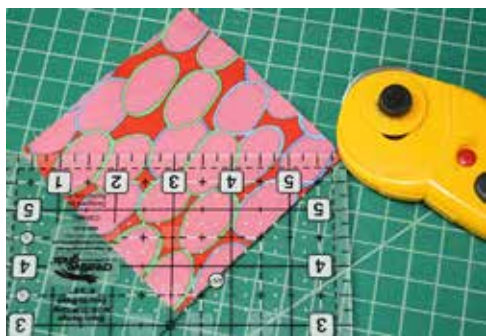


- Cut two 4" squares.



opening

- Cut the 4" squares in half diagonally.



- Pin the triangular applique over the opening, making sure each triangle is placed on the half block in the same place.

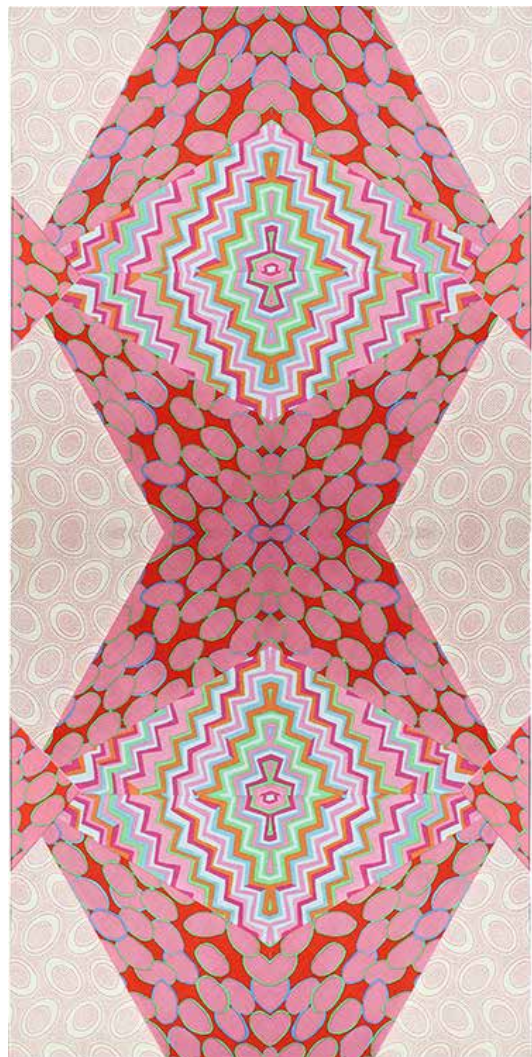
- Cut two 3" squares of freezer paper.
- Cut the squares in half diagonally.
- Iron the paper triangle to the fabric triangle.
- Wrap the fabric around the paper and glue stick down to make an applique.



- Sew the two half bocks together to make a square.

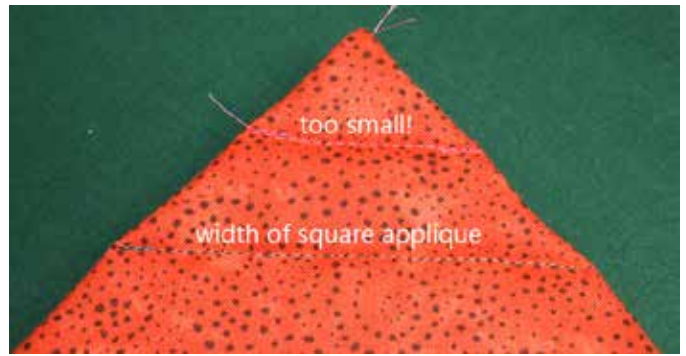


- Sew the two squares together to make the tote bag panel.
- Layer the panel with batting and lining fabric.
- Quilt as desired.
- Fold the quilted panel in half, right sides together, matching the appliqued triangles. This is when you'll be glad you pinned them carefully before appliqueing.
- Sew the sides together to form the tote bag.
- Turn the bag right side out and check the seams.
- If you're pleased, turn back inside out and serge or zig zag the side edges.



- Turn the bag inside out.
- Sew a triangle "bite" out of the corner.

As you can see, I sewed a "bite" that was too small at first. Then I realized I should use the width of the triangle to gauge my "bite". I liked it much better then!



- Finish the top edge with binding.
- Make a strap with the 4 ½" strip of Fabric B.
- Fold one side over ¼" and press.

I chose the fabric between the fussy cut Squedge pieces.

- Cut two 1 ½" x desired strap length strips of batting. Place the batting on top of the Fabric B strip.
- Wrap the fabric over both ends of the strap.
- Wrap the fabric over both long sides of the doubled batting strip, with the folded edge on top.
- Stitch the strap along the folded edge of the fabric. Stitch ⅛" from the edge, along both full length sides.
- Sew the straps to the inside of the sides of the bag.

