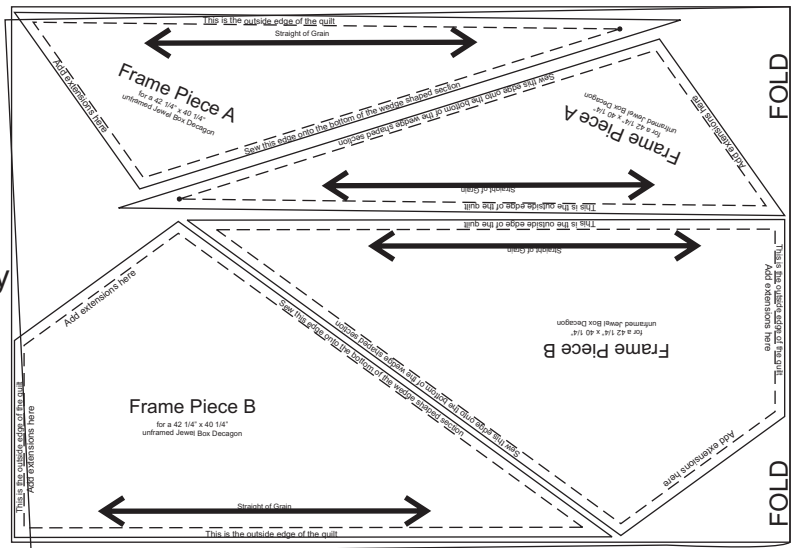


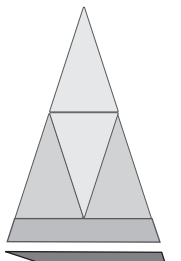
Making A Jewel Box Decagon Frame

Trace the frame pieces onto template plastic.
The template layout is shown at the right.
Cutting from a folded piece of fabric automatically
gives you mirror images of the framing pieces.

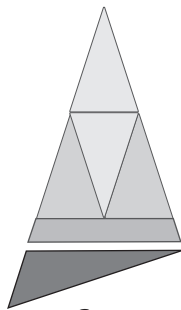
The folded fabric shown here is
15" x 41" folded in half.
You will need a larger piece for
one way designs or fussy cutting.



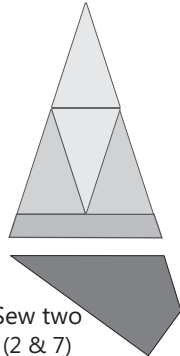
Ideally you'll add the framing pieces to the triangles of your Jewel Box project.
It is much easier to do it before you've assembled the decagon.



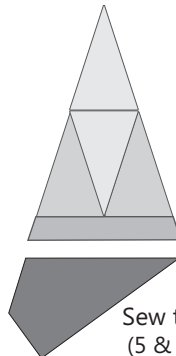
Sew two
(3 & 8)



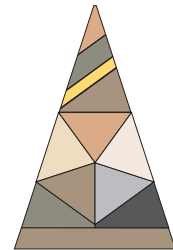
Sew two
(4 & 9)



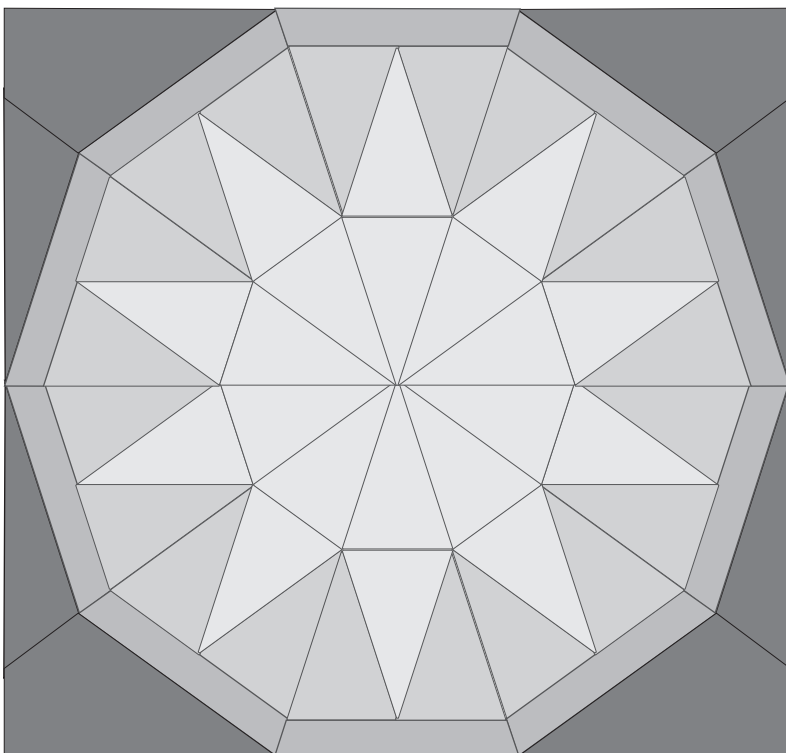
Sew two
(2 & 7)



Sew two
(5 & 10)



The same framing process
applies regardless of the
Jewel Box design.



You'll notice the top and bottom pieces
do not have framing pieces added to them.

The framing templates are available
for both sizes of Jewel Box Gems.
See www.phillipsfiberart.com

copyright 2012 Cheryl Phillips