

# Ferris Wheel Corrections



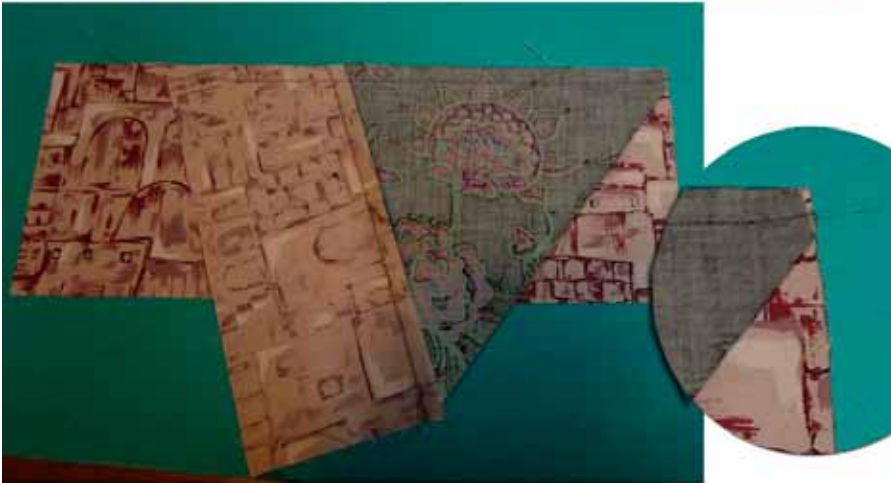
## Ferris Wheel Sewing

I tested the 4" x 10 1/2" piece of fabric, (using some really old pieces). This is the way I sew it--placing the sewn piece right on the edge of the new piece. When I trim I have exactly the right amount, without a bit to spare.

## Conclusion?

While it worked, I can see where I should have added 1/2" more to the length, perhaps even another inch.

If you've already cut your 10 1/2" strips, please note the photo in the circular enlargement. It shows the correct placement.



## Correction

In steps 6, 7, & 8 pieces D and E have their labels reversed.

D is labeled E  
and E is labeled D



I apologize for these pattern errors.