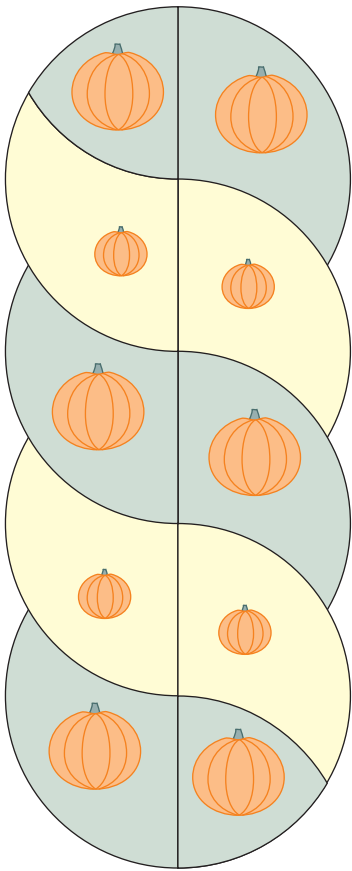
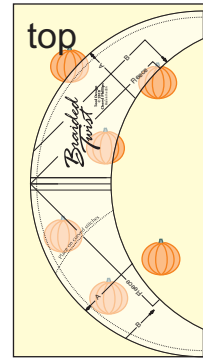


How to work with directional fabric

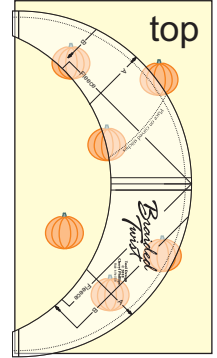


On the previous page I addressed direction in the endcaps. It's also important to pay attention to the "half" circles. Assuming you want all the pumpkins to face the same direction, cut the half rectangles from different sides according to their placement in the final runner.

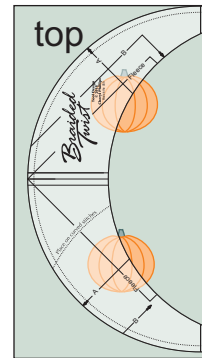
Left



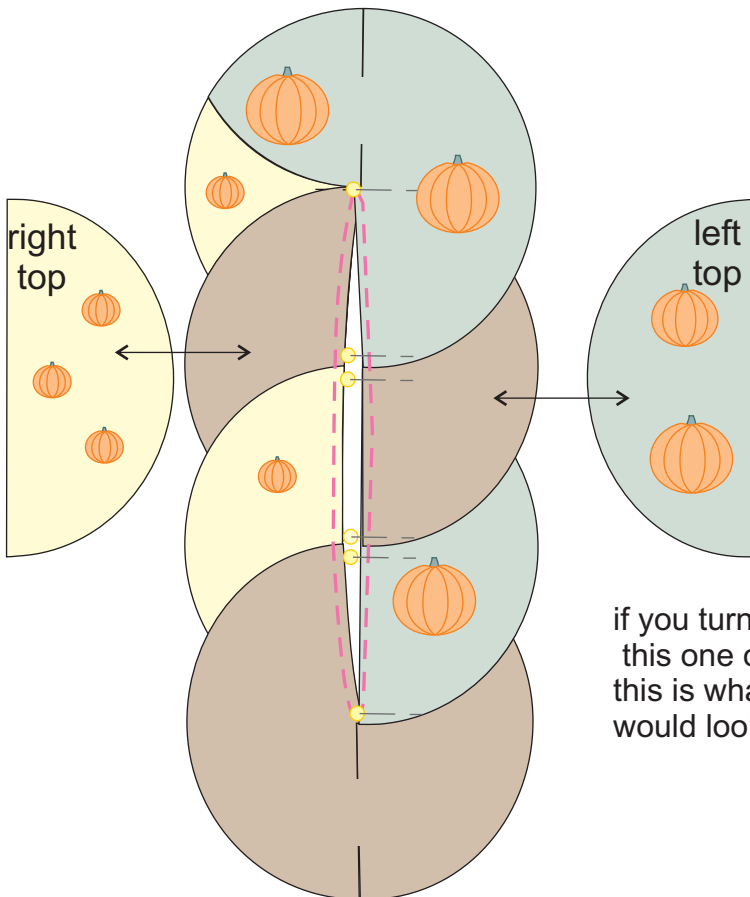
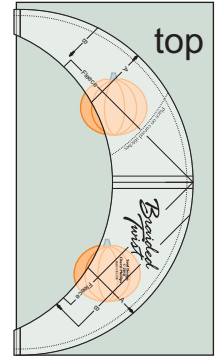
Right



Left



Right



if you turned this one over, this is what it would look like.

Before sewing each side, be sure to turn the runner over to see that all pumpkins are facing in the same direction.