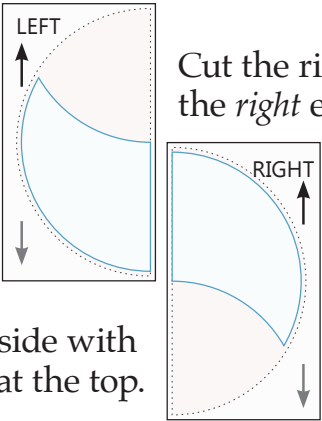


Placement Template

for applique and fussy cut designs

V is visible
H is hidden
R is removed

- ▶ Trace all lines of the Placement Template onto Template Plastic.
- ▶ Cut along the outside lines of the rectangle.
- ▶ Use the *V window* to select the portion of fabric to be visible in the final runner.
- ▶ Mark around the rectangle, also marking in the nip area for correct tool placement.
- ▶ Using an acrylic ruler, cut the rectangle lines.
- ▶ Place the Braided Twist tool on the side with the nip mark.
- ▶ Cut the half circle. Label *Right* or *Left*.



Cut the left side with the *left* end at the top.

Cut the right side with the *right* end at the top.

For further instructions on how to use these templates, visit our YouTube channel for the video:

Braided Twist Applique and Fussy Cutting

or see the *Rest of the Story* on our website

