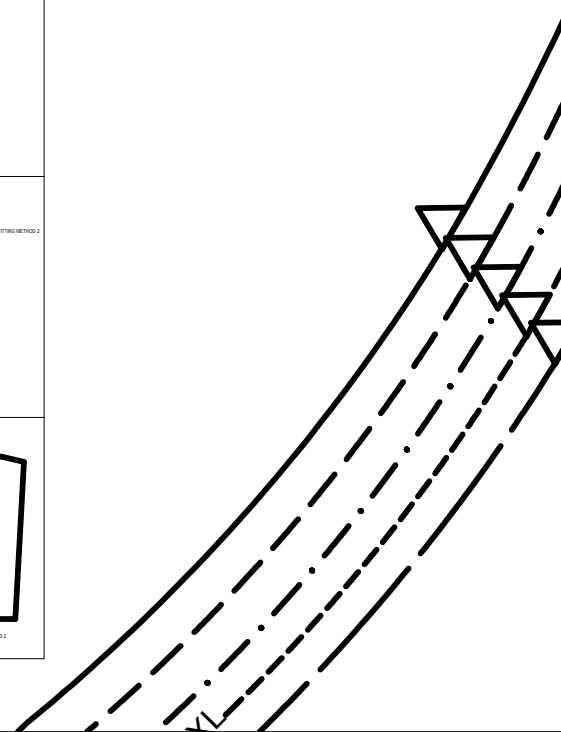
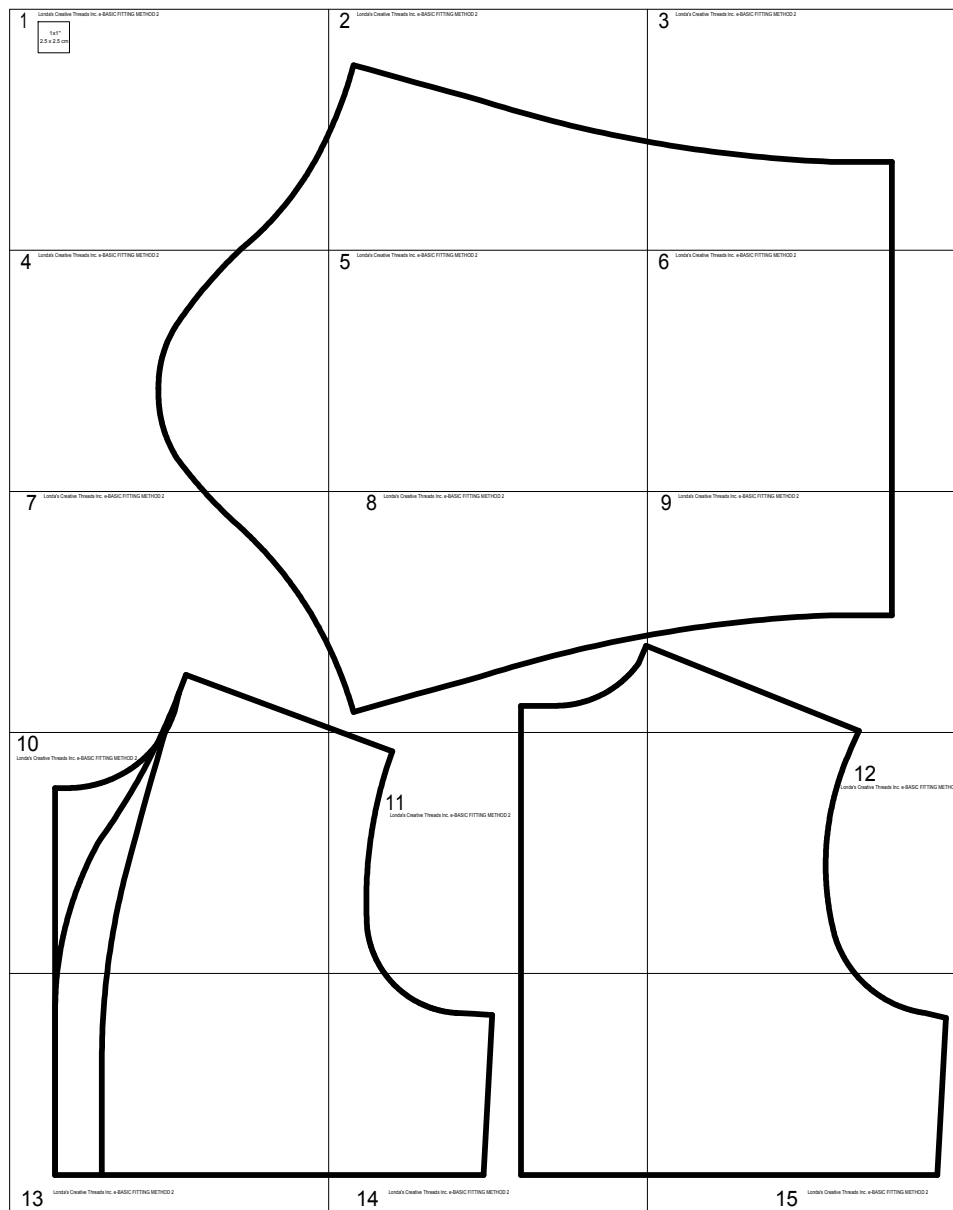
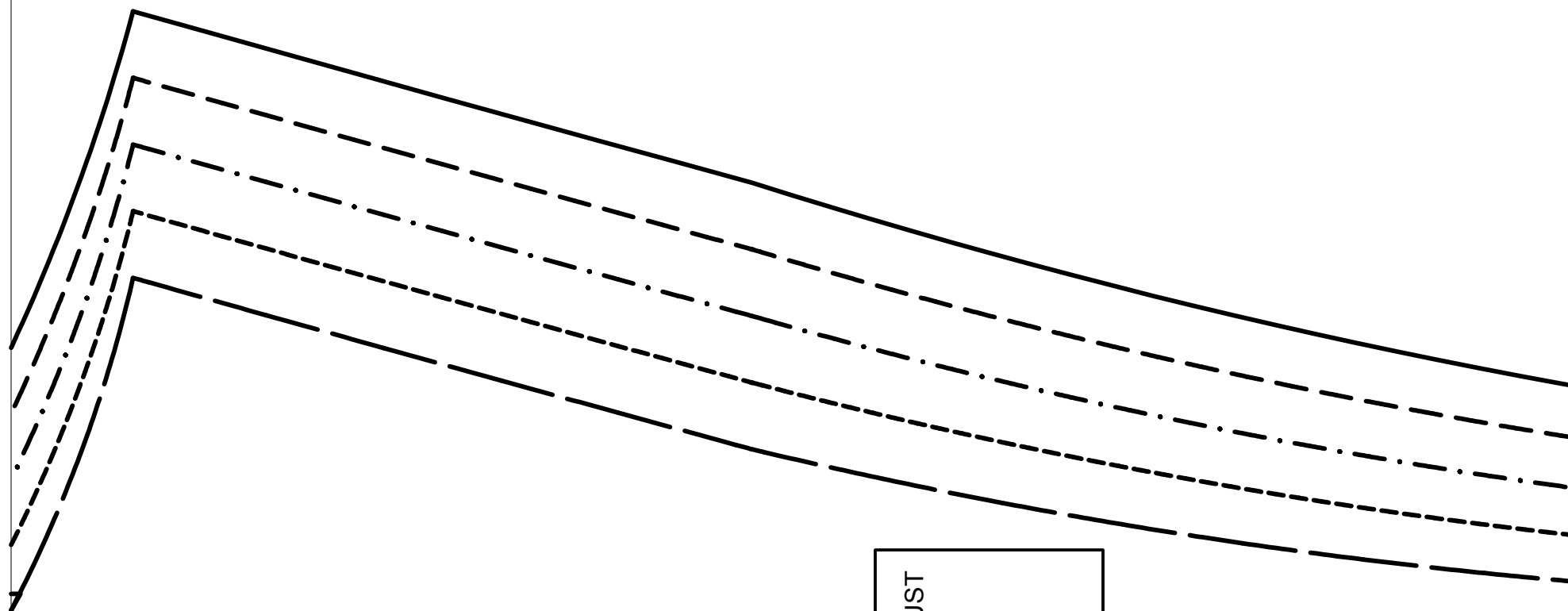


1

1x1"
2.5 x 2.5 cm

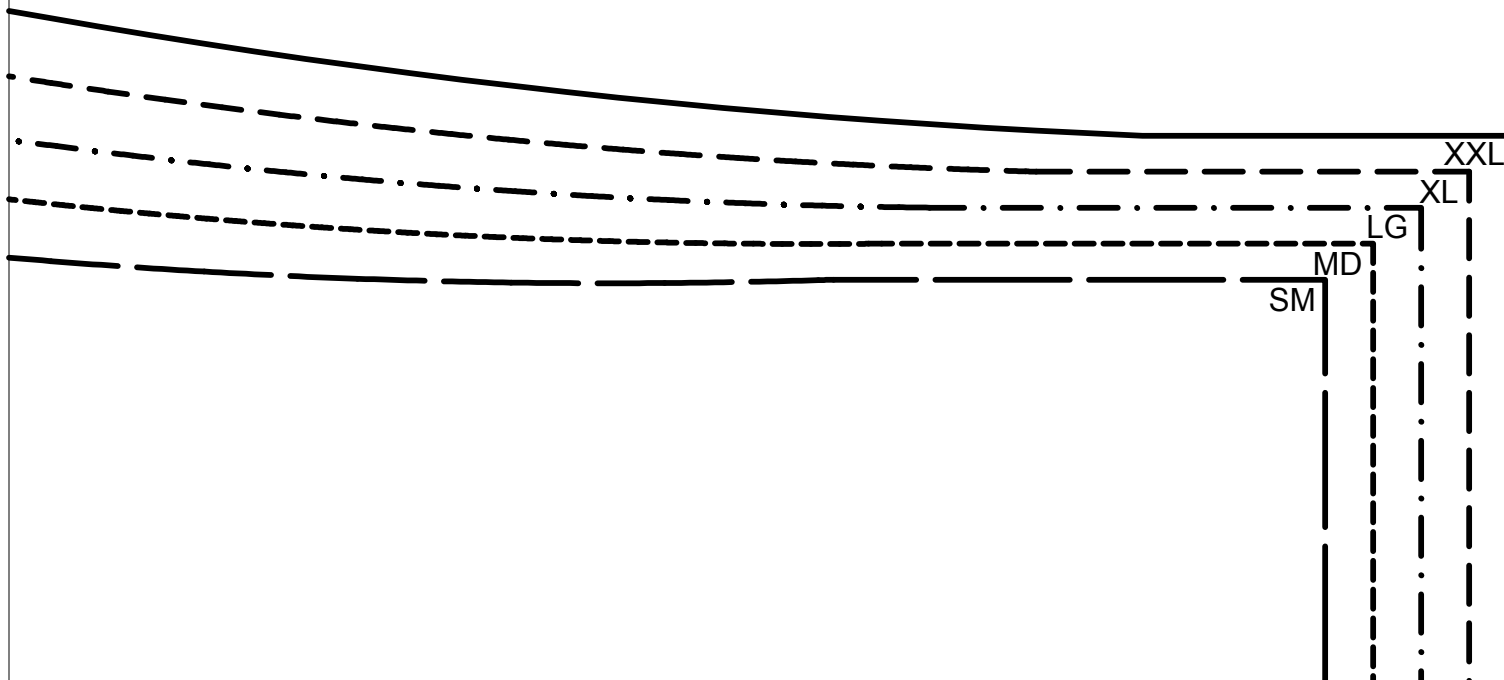
Londa's Creative Threads Inc. e-BASIC FITTING METHOD 2 Jacket pages
Finished box=30.75x38.75" (78.1x98.4cm)

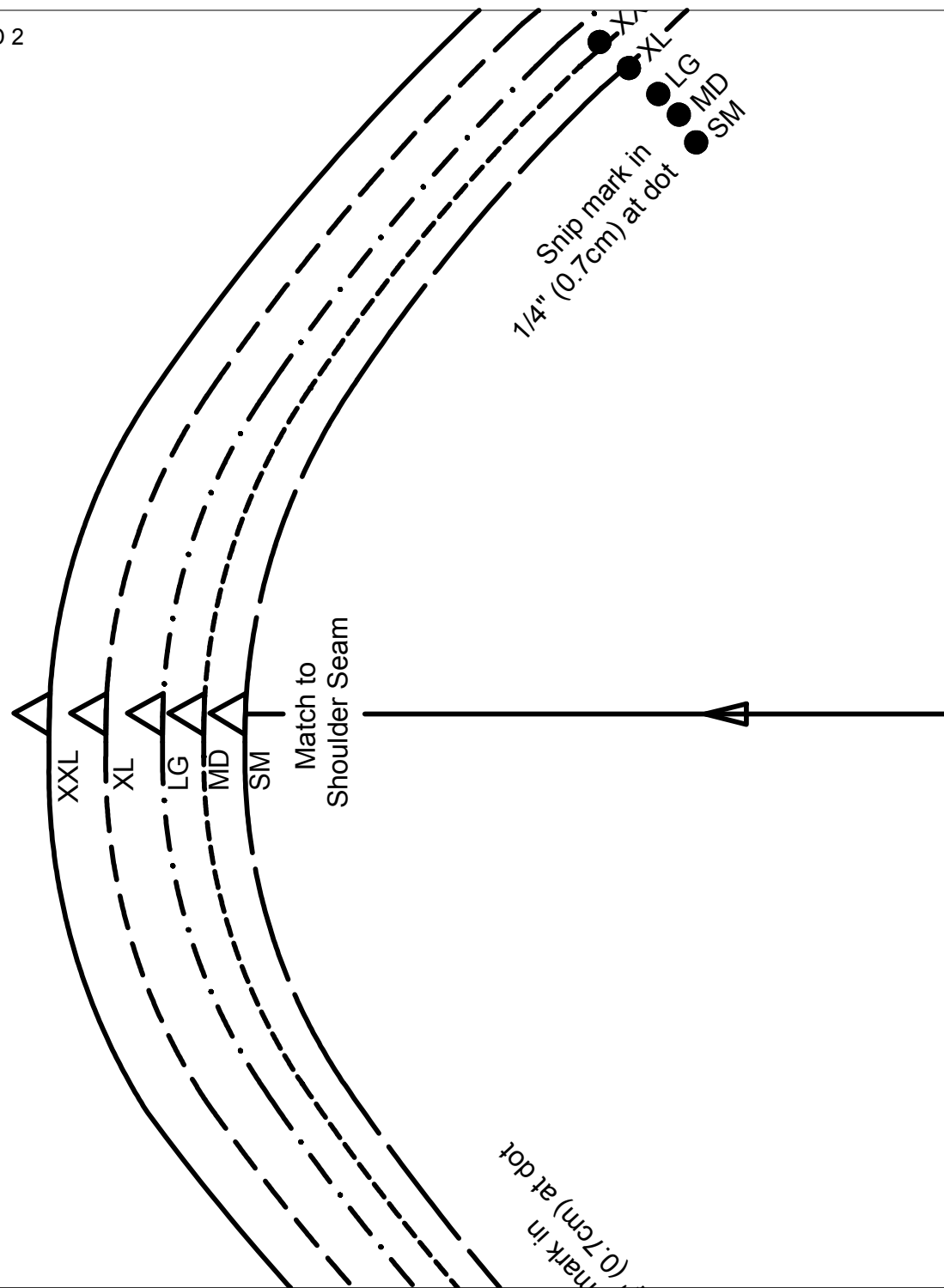




FINISHED GARMENT BUST

39-7/8" (101cm)
42-7/8" (109cm)
45-7/8" (116cm)
48-7/8" (124cm)
51-7/8" (131cm)





LONDA'S™ CREATIVE THREADS INC.
CREATIVE SWEATSHIRT JACKETS
Basic Fitting Method 2 Patterns

3rd Pattern Version

Copyright © 2011 Londa J. Rohlfing

SLEEVE

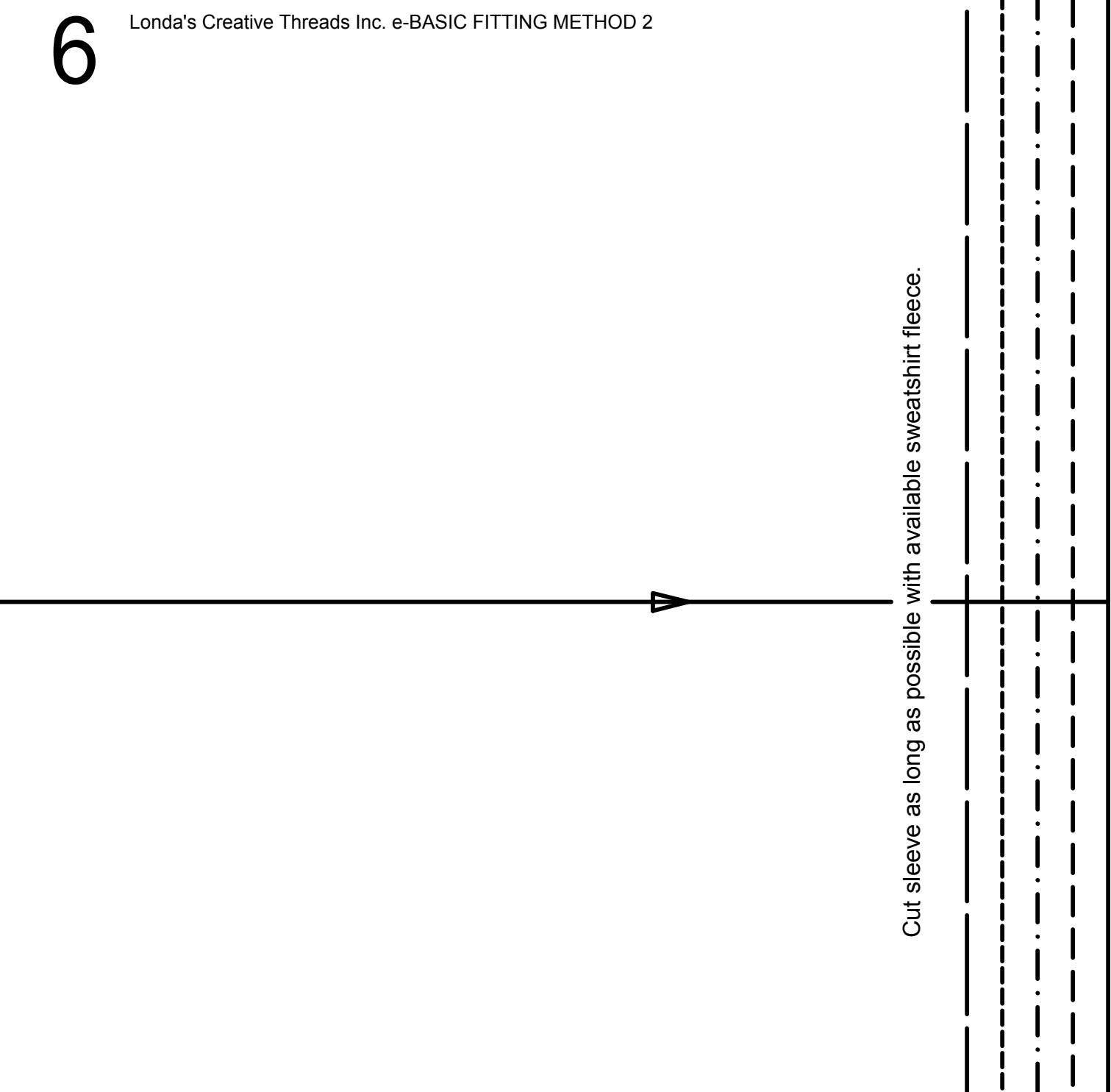
Cut 2

5/8" (1.5cm) seams allowed

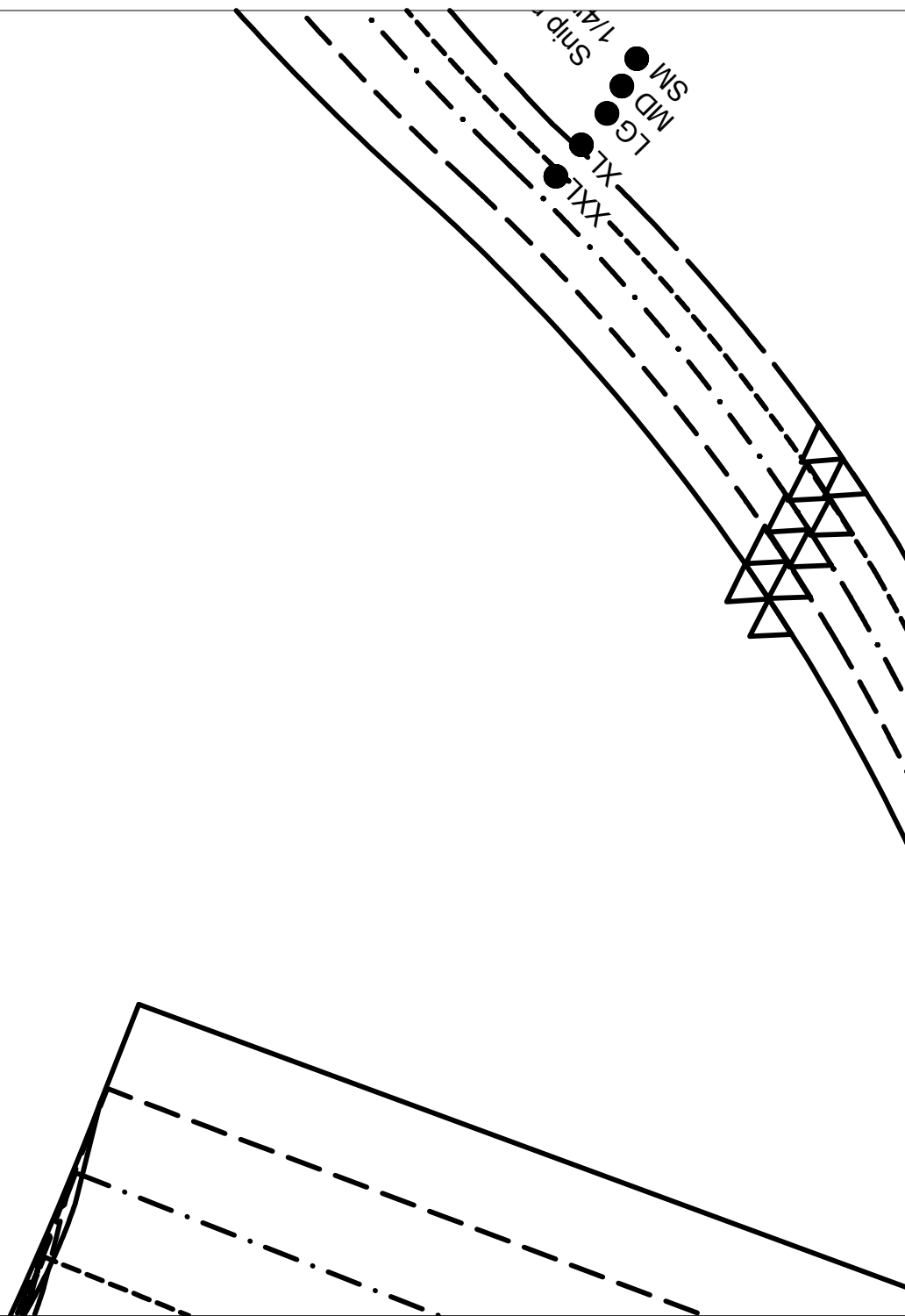
3

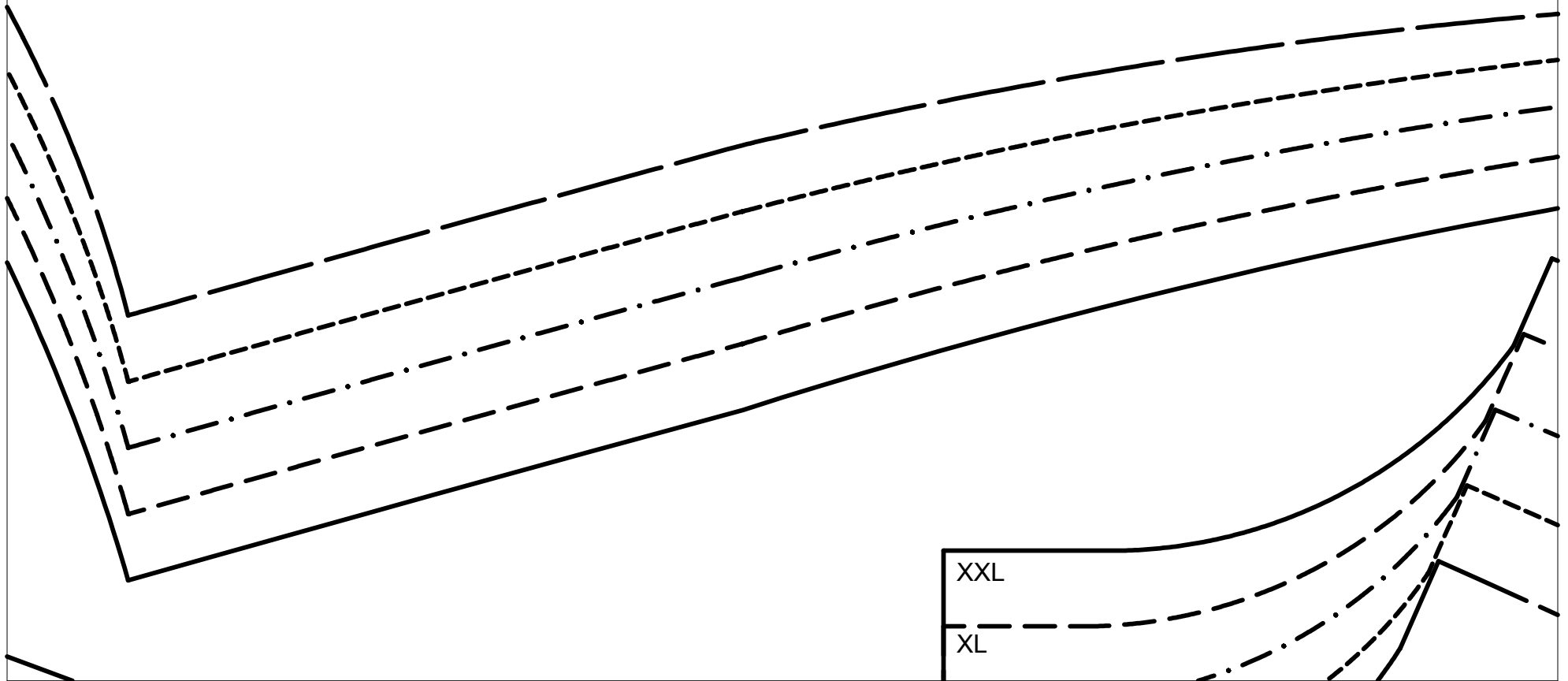
GRAIN LINE

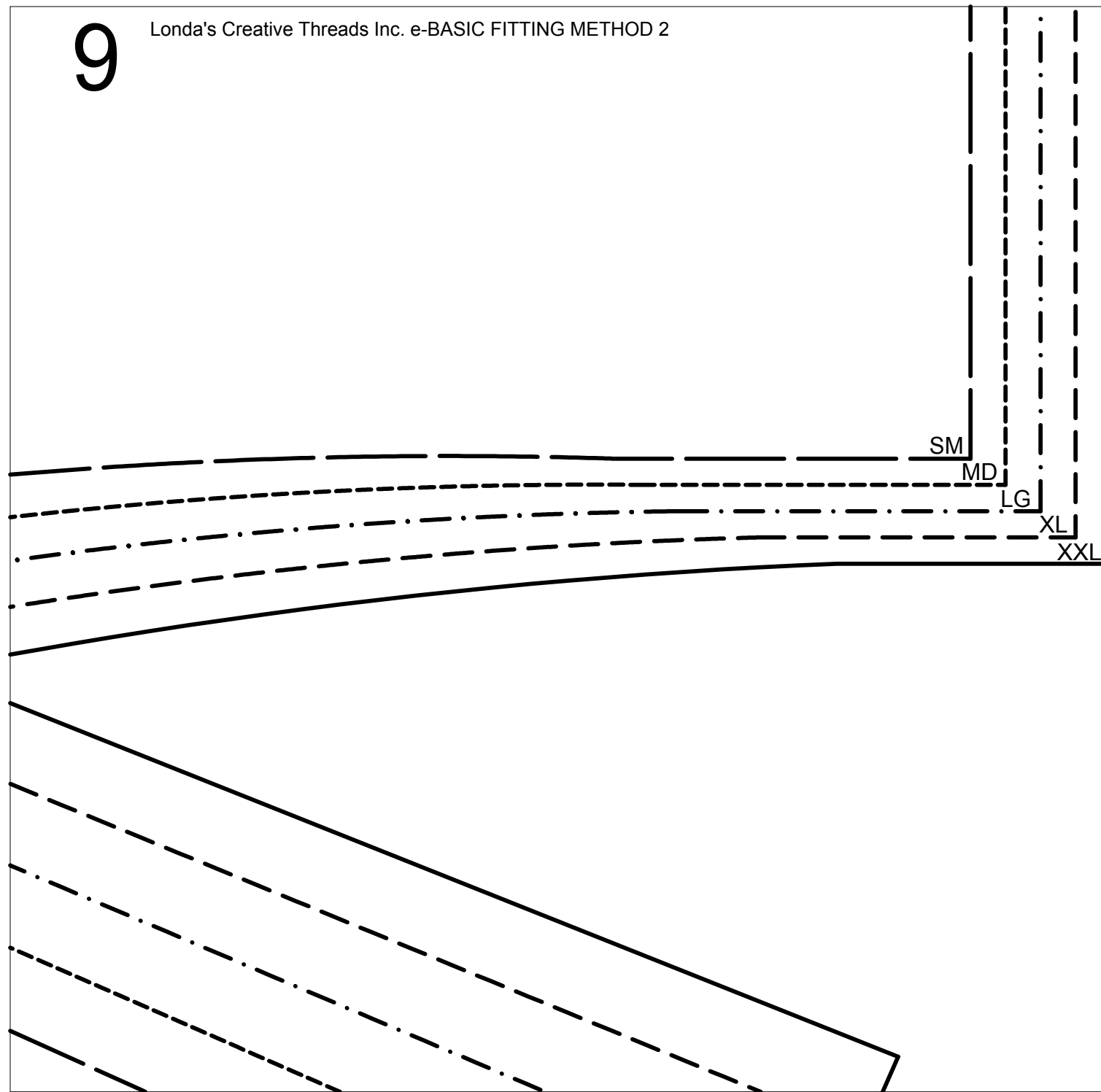
	SIZE	BUST
SM	6-8	32-34" (81-86cm)
MD	10-12	35-37" (89-94cm)
LG	14-16	38-40" (97-102cm)
XL	18-20	41-43" (104-109cm)
XXL	22-24	44-46" (112-117cm)



Cut sleeve as long as possible with available sweatshirt fleece.

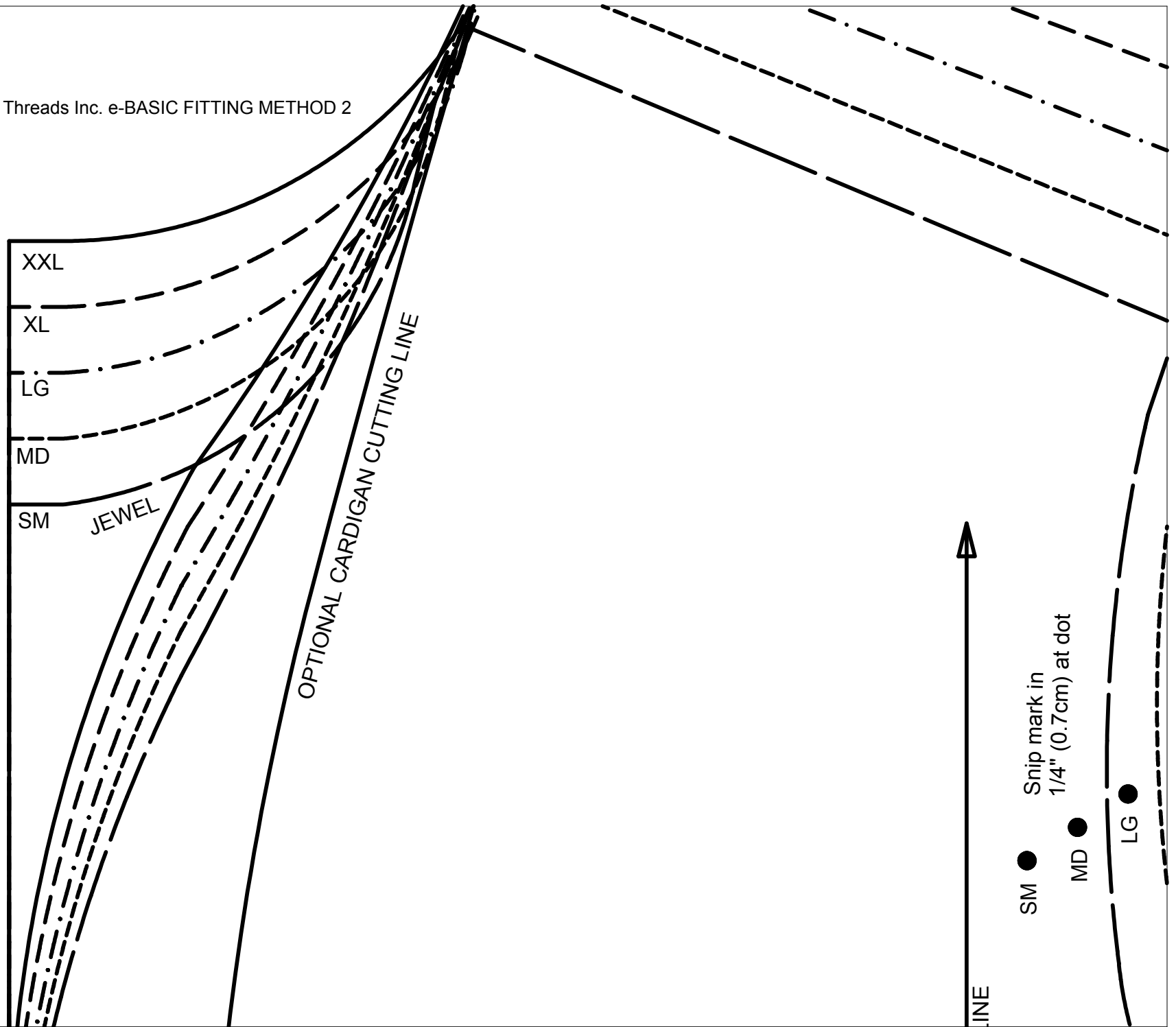


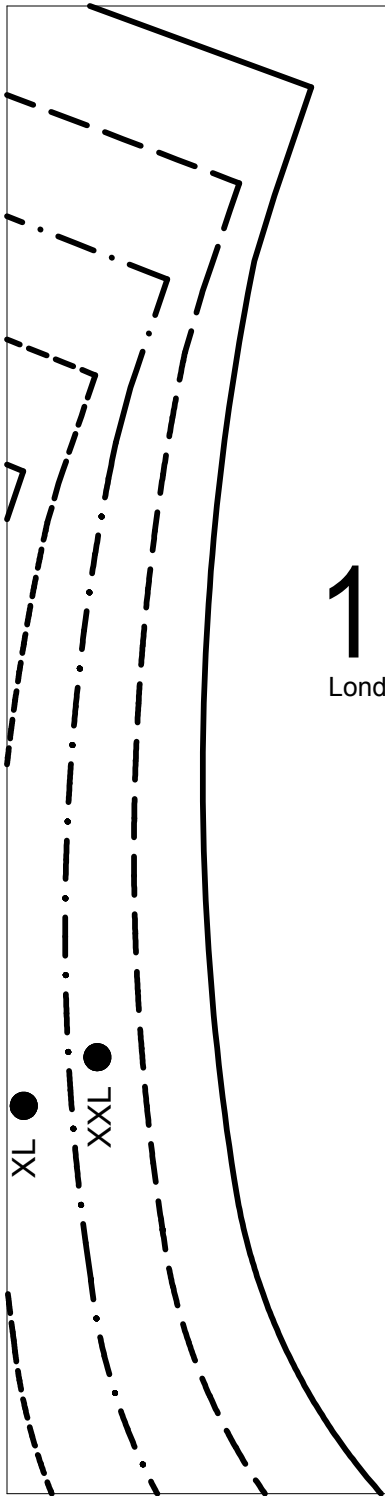




10

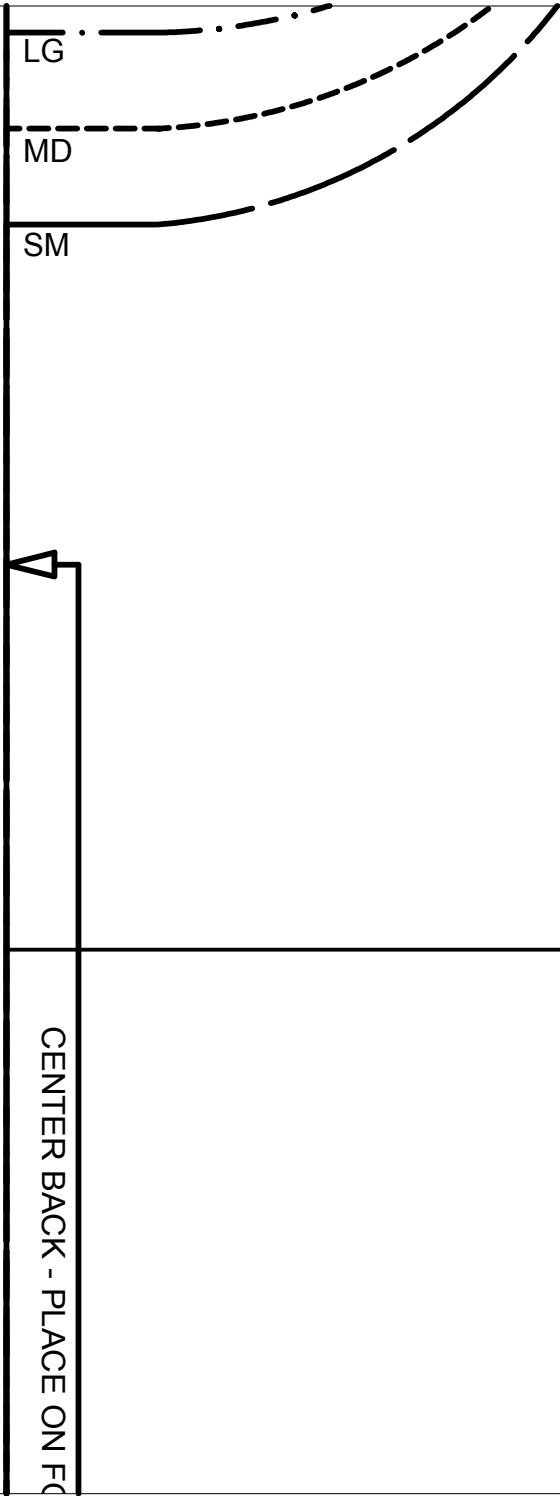
Londa's Creative Threads Inc. e-BASIC FITTING METHOD 2





11

Londa's Creative Threads Inc. e-BASIC FITTING METHOD 2



12

Londa's Creative Threads Inc. e-BASIC FITTING METHOD 2

Full Back Alteration Line

● SM
Snip mark in
1/4" (0.7cm) at dot

● MD

● LG

● XL

● XXL



LONDA'S™ CREATIVE THREADS INC.
CREATIVE SWEATSHIRT JACKETS
Basic Fitting Method 2 Patterns

3rd Pattern Version

Copyright © 2011 Londa J. Rohlfig

FRONT

Cut 2

5/8" (1.5cm) seams allowed, except
3/8" (1cm) allowed at neck and center front

1

GRAIN L

Bust Position

XXL

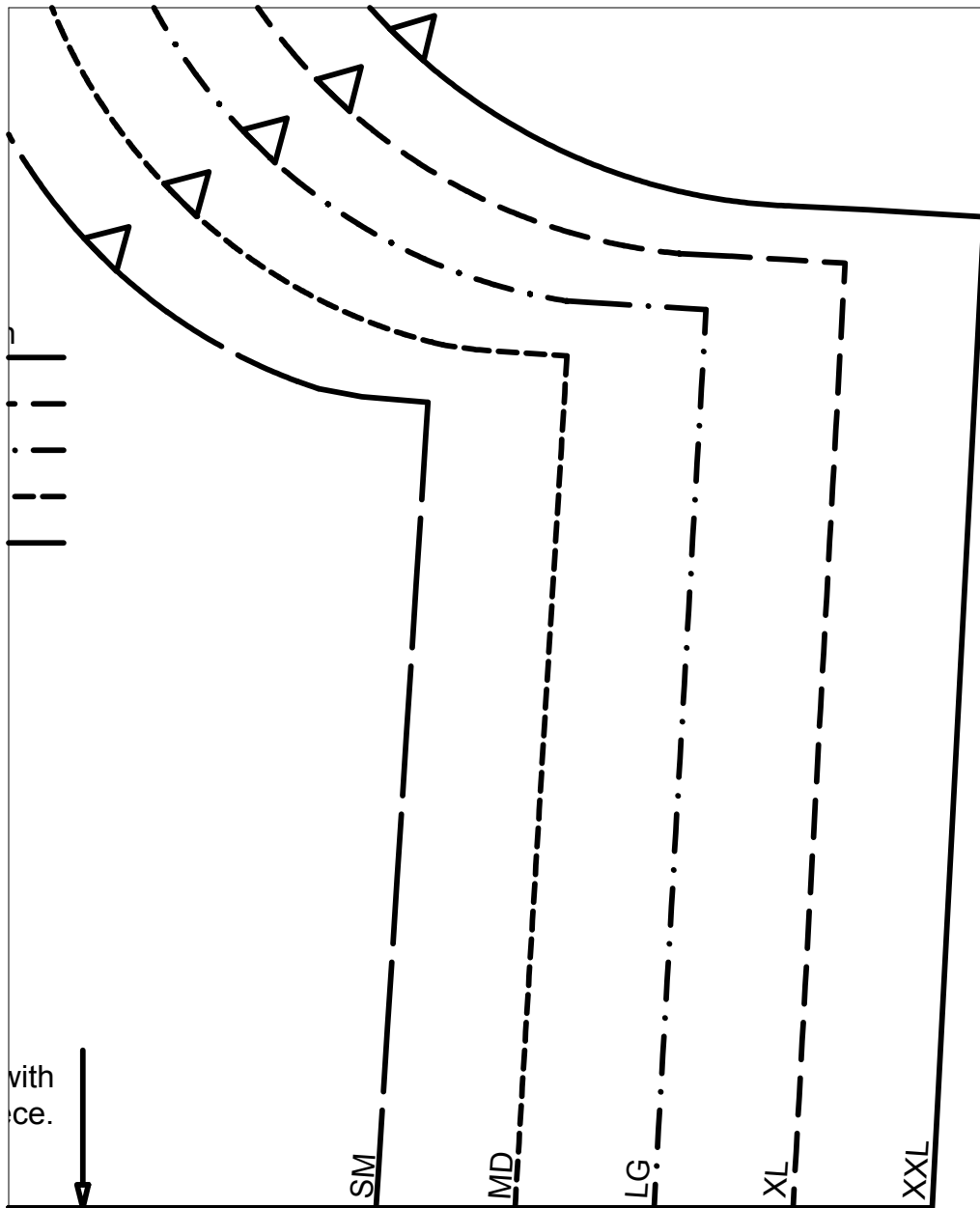
XL

LG

MD

SM

Cut as long as possible v
available sweatshirt fleec



Bust Position	
XXL	_____
XL	_____
LG	_____
MD	_____
SM	_____

LONDA'S™ CREATIVE THREADS INC.
CREATIVE SWEATSHIRT JACKETS
Basic Fitting Method 2 Patterns

3rd Pattern Version

Copyright © 2011 Londa J. Rohlfing

BACK

Cut 1 on fold

5/8" (1.5cm) seams allowed, except
3/8" (1cm) allowed at neck and center front

2

Cut as long as possible with
available sweatshirt fleece.

SM

MD

LG

XL

XXL

15

Londa's Creative Threads Inc. e-BASIC FITTING METHOD 2