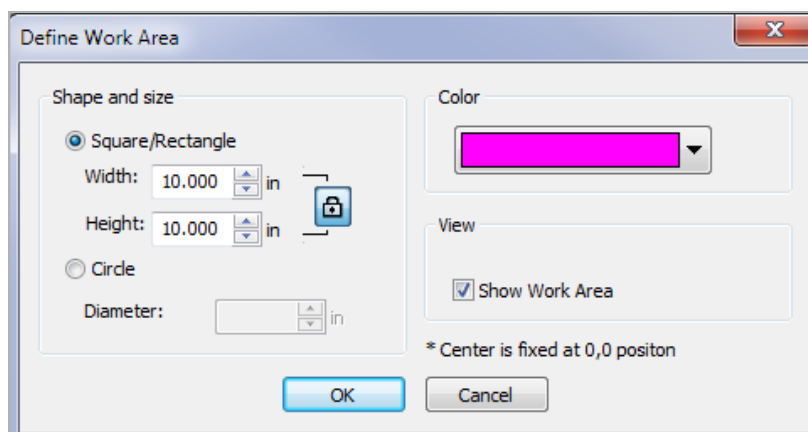


Layouts

Creating a Work Area

- Open BERNINA Embroidery Software 8.
- Open the Layout Toolbox.
- Click on Define Work Area. A dialog box will open.
- Change the Width to 10" with Proportional Scaling in the locked position.
- Choose a color for the layout background.
- There should be a check mark by Show Work Area.
- Click OK.

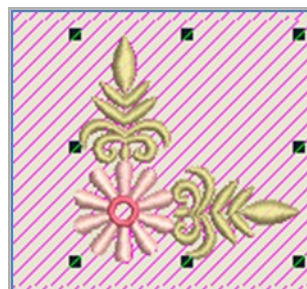


Notes:

Rectangular and Circular work areas can be defined. You can also create a Quilt Block Layout.

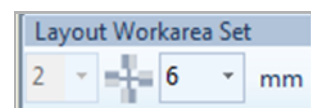
Adding Embroidery

- Select Insert Embroidery.
- Navigate to Libraries> Embroidery> BERNINA 8 Embroidery> Alphabets & Monograms.
- Select FB039.ART80.
- Notice the large preview in the Insert Embroidery dialog box. The dialog box can also be resized.
- Click Open.
- Select Rotate Right two times to rotate the design so it is oriented to the left corner. Rectangular and square layouts use the lower left corner as a reference to place designs.



Creating the Layout

- Click on Layout to Rectangular Work Area to set the designs.
- You can set the distance the corner designs are set from the work area by changing the distance in the Layout Work Area Set.
- Change the distance to 10 mm. The designs automatically move.
- Click on the design screen to set the design.





Adding a Center Design

- Select Insert Embroidery.
- Select FB038.ART80.
- Click Open.
- Move the design off the center for editing.
- Hold the Alt key while dragging a bounding box around the center flower.
- Drag the flower center away from the rest of the design.
- Right click on the design and select Ungroup.
- Draw a bounding box around the flower center and right click and select Group.
- Select each satin stitch leaf and drag each leaf to opposite ends of the center flower.
- Draw a bounding box around the remaining parts of the design.
- Right click; select Delete.
- Draw a bounding box around the created design.
- In the Arrange Toolbox, select Align Centers Horizontally.
- Select Space Evenly Across while everything is selected.
- In the Layout Toolbox, click on Auto Center to Work Area.
- Press Enter.
- The design is placed at the center of the work area.



Selecting the Hoop

- Right click on Show Hoop.
- Select BERNINA 8 series.
- Select BERNINA Jumbo Hoop, 256 x 400.
- Select Foot #26.
- Check Show Hoop if it is unchecked.
- Click OK.
- Save the design as Layout.



Notes:

