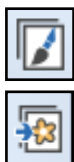


Color PhotoStitch

Loading photo:

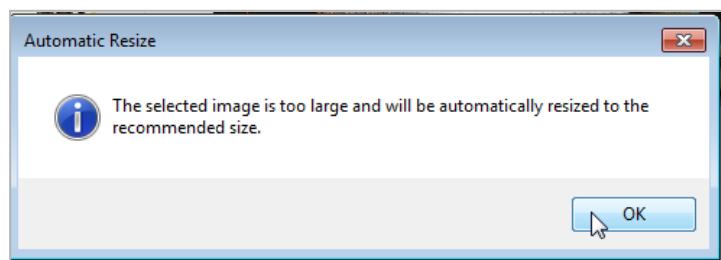


- Open BERNINA Embroidery Software 8.
- Switch to Artwork Canvas.
- Select Load Artwork.
- Navigate to Libraries > Pictures.
- Select folder BERNINA 8 Pictures> Artwork> PhotoStitch.
- Select Cat Face and click on Import.
- Click on the screen and press Enter to place the graphic.

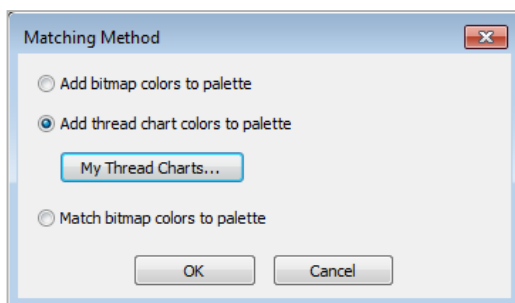
Convert to Color PhotoStitch



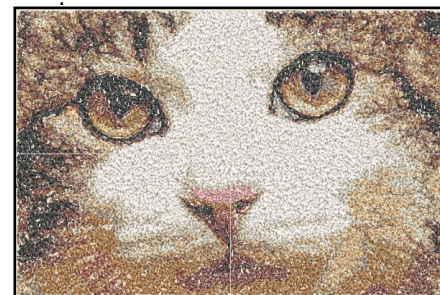
- Switch back to Embroidery Canvas.
- While image is selected, click on Color PhotoStitch in the Auto-Digitize Toolbox.
- If the size of the photo is too large, the photo will be automatically resized during processing.
- Click OK in the dialog box that opens.



- Click on Adjust to adjust basic lightness and contrast by clicking and dragging the sliders to the right.
- Set Lightness to 3.5 and the Contrast to 10.
- Confirm with OK.
- Select Matching Method to assign bitmap colors or threads to your palette.
- The second option, Add thread chart colors to palette, is the default.



Notes:



For best results, use crisp images with well-defined subjects and constantly varying shades.

For Windows 7, pictures are found in Libraries> Pictures. For Windows 8 & 10, pictures are found in C: Users> Public> Public Pictures.

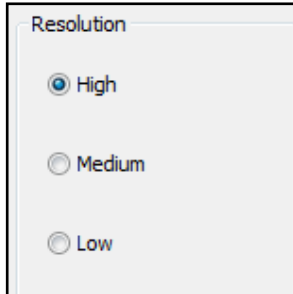


If you can't see the photo, activate Bitmaps.

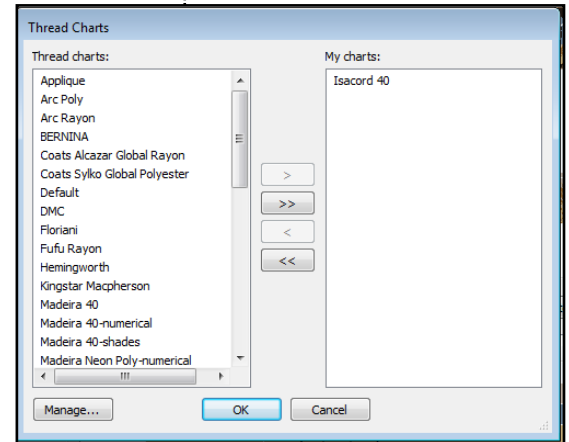
Use Corel Photo-Paint to touch up the image for the full range of adjustment techniques.



- Click on My Thread Charts to choose your thread brand.
- Add Isacord 40 to your charts if it is not yet selected.
- Click OK, then OK again.
- Adjust stitching resolution to High.



Notes:

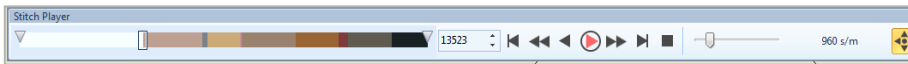


- Click OK to process the image.
- Activate Show Artistic View if it is not activated.
- Deactivate Bitmaps to see the result.

High resolution allows greater detail but with a higher stitch count.

Stitch Player

- Open the Stitch Player by selecting it on the toolbar, go to View> Stitch Player or press Shift + R.
- Adjust the speed by clicking and dragging on the slider arrow.



The Stitch Player is a great tool to simulate the stitchout of the design.

- Typical Media Player buttons are available :



- ◇ Play / Pause
- ◇ Previous / Next color
- ◇ Beginning / End
- ◇ Play Backwards

- To redraw only a part of the design, specify the start and end stitch in the color bar.
- To close Stitch Player, click on the Stitch Player icon again.

